

**THE SCHOOL BOARD OF BROWARD COUNTY, FLORIDA  
OFFICE OF THE SUPERINTENDENT**

**JAMES NOTTER  
SUPERINTENDENT OF SCHOOLS**

**Telephone: (754) 321-2600**

**Facsimile: (754) 321-2701**

*Signatures on file.*

July 14, 2009

**TO:** School Board Members

**FROM:** Joanne W. Harrison, Ed.D., Deputy Superintendent  
Educational Programs & Student Support

**VIA:** James Notter  
Superintendent of Schools

**SUBJECT: 2009 STANFORD ACHIEVEMENT TEST, TENTH EDITION (SAT-10)  
READING COMPREHENSION RESULTS**

The Stanford Achievement Test, Tenth Edition (SAT-10) is a nationally normed test of Reading and Mathematics skills. Broward County Public Schools (BCPS) first and second grade students took the Reading Comprehension portion of the assessment in April of the 2008-09 school year. As specified in School Board Policy 6000.1, performance on the Reading Comprehension subtest is a criterion for promotion to the next grade level. Since school year 2007-08, BCPS students have not taken the Mathematics Problem Solving subtest, which was replaced with a standards-based end-of-course mathematics assessment. Likewise, 2008-09 marks the final year of administration of the SAT-10 Reading Comprehension test in BCPS. In 2009-10 it will be replaced with a standards-based end-of-course reading test. Standards-based tests align to district curriculum and the results provide data to guide individual student instruction.

Individual student results for the 2008-09 administration of the SAT-10 Reading Comprehension subtest are now available in the District Data Warehouse and Virtual Counselor. Enclosed you will find District and school-by-school summary data of student performance on the SAT-10 Reading assessment. As the following data summaries illustrate, student performance has increased considerably from the previous school year. However, performance gaps between boys and girls, White and Black students, and White and Hispanic students persist.

### **SAT-10 Districtwide Results**

Reading test results for BCPS' first and second grade students who participated in SAT-10 testing during 2008-09 are summarized in Figure 1 along with data from the prior two school years. When reviewing these test scores, remember that 50 is the average national percentile rank for a norm-referenced test.

**Figure 1 indicates that, on average, district student performance on the SAT-10 continued to exceed the national average (50<sup>th</sup> percentile) for grades 1 and 2 in Reading.<sup>1</sup> The Mean Percentile Rank increased considerably in both grade levels in 2009, particularly grade 1.**

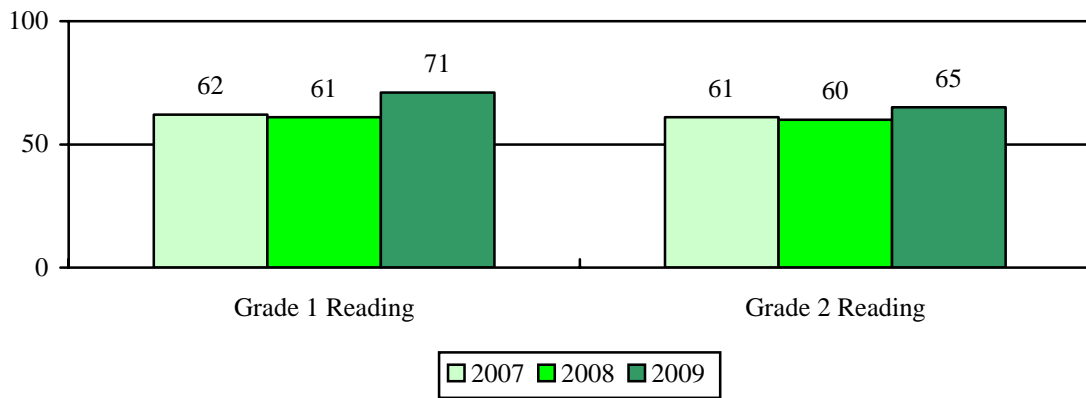


Figure 1. SAT-10 Mean Percentile Rank, 2006-07 through 2008-09.

### SAT-10 Results by Gender

The SAT-10 results displayed in Figure 2 are disaggregated by gender and grade level. **Female students in both grades 1 and 2 registered higher scores than did their male classmates.** As with the District overall, performance by gender and grade level has increased over the previous years. **Both genders at both grade levels demonstrate a Mean Percentile Rank well above the national average.**

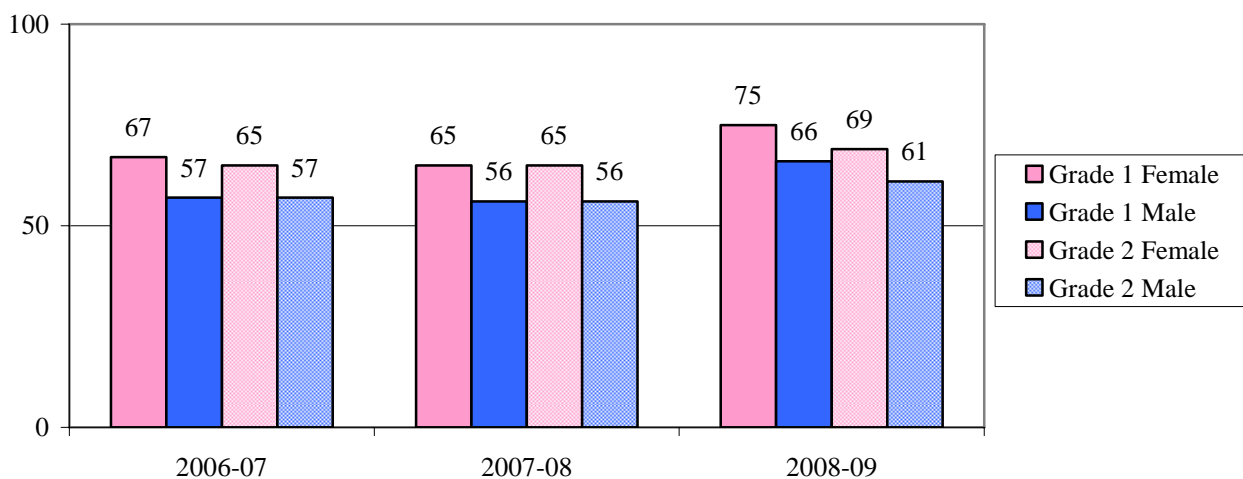


Figure 2. SAT-10 Mean Percentile Rank by Gender and Grade, 2006-07 through 2008-09.

<sup>1</sup> Individual student percentile rank scores were converted to normal curve equivalent (NCE) scores prior to averaging. The average NCE score was reverse transformed to a percentile rank for reporting.

### SAT-10 Results by Ethnicity

Figures 3 and 4 provide SAT-10 test results by ethnicity and grade level. **Grade 1 students in each ethnic category achieved above the national average in all three years examined.** In grade 2, while Hispanic and White students scored above the national average in all three years, Black students scored at or below the national average in two years.

Achievement gaps between Black and White students and Hispanic and White students have been observed in the past and persist with the most recent assessment results. **Also of concern is the percentile rank disparity between Black grade 1 students and Black grade 2 students in each year examined.**

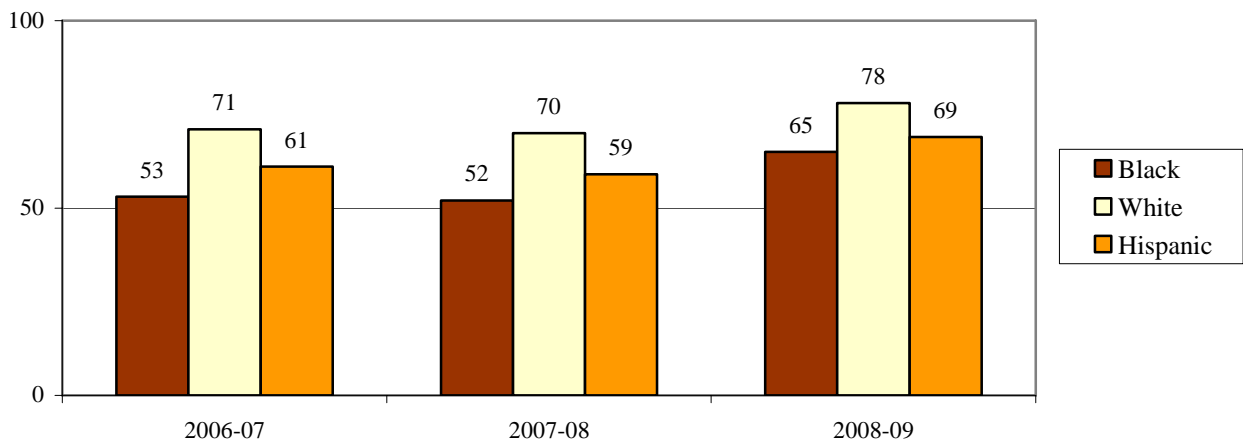


Figure 3. SAT-10 Mean Percentile Rank by Ethnicity, Grade 1

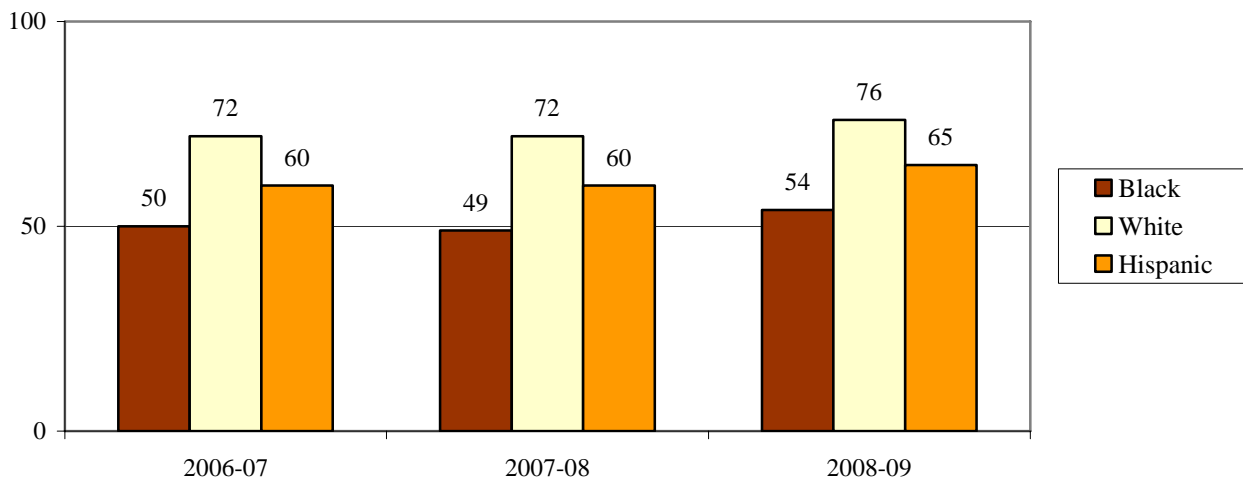


Figure 4. SAT-10 Mean Percentile Rank by Ethnicity, Grade 2

### **SAT-10 School-by-School Results**

Appendix A provides a summary of BCPS participation and Mean Percentile Ranks for grades 1 and 2 during the 2006-07 through 2008-09 school years. Schools with mean performance below the national average (50<sup>th</sup> percentile) display the relevant scores in bold text. Highlights of Broward schools' 2008-09 score reports include:

- 152 of 160 (95.0%) Broward schools with grade 1 enrollments registered Mean Percentile Ranks above the national average in Reading Comprehension in that grade, while 133 of 161 (82.6%) schools with grade 2 enrollments were above the national average.
- Forty-six schools performed at or above the 75<sup>th</sup> percentile in grade 1 Reading Comprehension while thirty-one schools performed at or above the 75<sup>th</sup> percentile in grade 2. **Twenty-eight schools demonstrated commendable performance by performing at or above the 75<sup>th</sup> percentile in both grades 1 and 2.**
- No school performed below the 25<sup>th</sup> percentile in either grade level.

The most recent results of the SAT-10 Reading Comprehension test indicate several positive results. In both grades 1 and 2, BCPS students performed significantly better than the national average. When examined by gender, both females and males performed better than the national average in both grade levels. By ethnicity, Black, Hispanic, and White students in both grade levels performed above the national average. However, several trends warrant attention as they have continued with this most recent assessment. Male students in BCPS in both grade levels continued to demonstrate lesser achievement than females. Additionally, the Black and Hispanic ethnic groups demonstrated lower achievement than White students.

#### **How should the data be used?**

Schools should use Appendix A to determine their performance relative to the national average (scores below the median percentile of 50 are in bold), and Appendix B to locate and address gaps between student demographic groups within the school (gaps in excess of 10 points are in bold). Area staffs and reading specialists should focus on strategies to address these trends in the 2009-10 School Improvement Plans.

This memorandum is available on the Student Assessment & School Performance Department Web site at <http://www.broward.k12.fl.us/studentassessment>. If you have any questions regarding this report, please contact **Paul Houchens, Director, Student Assessment & School Performance, at 754-321-4257.**

JFN/JWH/KAB/PWH:tje

Attachments

cc: Executive Leadership Team  
Area Directors  
Principals  
Diane Carr, Executive Director, Core Curriculum

Appendix A  
2006-07 through 2008-09 SAT-10 Reading Comprehension Results by School and Grade

School	Loc#	2006-07				2007-08				2008-09			
		Grade 1		Grade 2		Grade 1		Grade 2		Grade 1		Grade 2	
		n	%ile	n	%ile	n	%ile	n	%ile	n	%ile	n	%ile
<b>NORTH AREA</b>													
Atlantic West	2511	170	65	160	54	130	57	165	56	145	72	142	57
Coconut Creek	1421	148	66	153	69	150	62	171	63	135	75	158	73
Coral Park	3041	117	79	115	72	85	75	123	74	99	73	79	76
Coral Springs	2551	120	57	126	53	106	60	123	60	112	70	105	63
Country Hills	3111	130	65	147	71	166	68	131	64	141	77	159	76
Cresthaven	0901	118	44	107	52	99	51	106	51	102	60	104	52
Cypress	1781	134	58	106	50	158	45	124	52	147	66	131	58
Deerfield Beach	0011	123	57	108	52	142	43	121	62	113	57	134	59
Deerfield Park	0391	134	50	103	48	110	52	108	49	113	65	108	<b>47</b>
Drew, Charles	3221	115	38	97	42	108	50	119	49	84	58	103	50
Eagle Ridge	3441	139	76	140	70	134	82	138	68	127	83	140	78
Forest Hills	2631	102	66	104	63	118	65	103	57	106	81	110	67
Hunt, James S.	1971	173	72	149	65	154	69	170	59	151	73	164	60
Liberty	3821	199	55	175	52	188	49	197	49	191	62	184	51
Maplewood	2741	136	57	125	70	132	51	138	61	112	73	120	69
Margate	1161	155	56	164	62	166	49	155	56	173	65	157	65
Markham, Robert C.	1671	80	52	71	40	76	45	75	42	74	55	72	54
McNab	0841	123	62	116	62	115	73	122	64	146	64	121	71
Morrow	2691	128	40	94	51	110	32	107	47	88	62	91	<b>47</b>
Norcrest	0561	116	52	103	57	107	44	119	65	125	60	101	57
North Lauderdale	2231	164	47	134	41	140	48	142	36	117	53	143	<b>48</b>
Palmview	1131	113	41	112	49	115	42	91	51	94	61	93	51
Park Ridge	1951	90	44	62	43	74	43	88	34	54	62	73	<b>38</b>
Parkside	3631	131	60	138	58	127	55	146	59	131	68	125	59
Park Springs	3171	154	70	138	72	142	67	166	66	148	72	143	72
Park Trails	3781	190	80	225	75	238	75	222	80	200	84	243	82
Pompano Beach	0751	98	56	102	52	104	51	91	53	93	60	90	<b>46</b>
Quiet Waters	3121	194	64	216	64	221	57	209	60	222	72	204	64
Ramblewood	2721	135	73	136	63	143	68	168	65	128	72	133	68
Riverglades	2891	149	74	159	73	140	71	157	73	127	82	147	77
Riverside	3031	139	71	139	77	126	74	144	69	131	82	125	75
Sanders Park	0891	86	49	80	44	83	48	74	50	98	66	86	56
Tamarac	2621	186	65	164	62	175	63	191	64	171	65	176	63
Tedder	0571	88	54	106	46	91	48	88	49	126	<b>49</b>	85	50
Tradewinds	3481	171	66	175	69	174	61	185	61	177	74	157	72
Westchester	2681	170	78	187	65	160	72	182	73	172	77	169	74
Winston Park	3091	213	69	197	66	191	63	205	69	211	67	188	68
<b>NORTH CENTRAL AREA</b>													
Banyan	2001	161	59	172	61	139	60	158	60	152	74	139	59
Broadview	0811	111	68	139	62	147	66	131	55	146	71	145	69
Castle Hill	1461	145	52	138	41	107	57	127	40	113	64	100	<b>45</b>
Challenger	3771	192	67	183	65	204	61	195	61	179	68	186	65
Endeavour PLC	3301	125	49	100	48	107	38	105	49	96	58	97	56
Floranada	0851	126	62	117	73	106	60	140	61	104	75	102	71
Horizon	2531	151	70	146	61	142	70	152	62	135	78	149	65
Larkdale	0621	76	42	62	39	82	37	72	31	78	53	68	<b>41</b>
Lauderhill, Paul Turner	1381	130	50	104	43	131	44	118	42	101	61	126	<b>41</b>
Lloyd Estates	1091	66	45	76	45	90	45	71	41	73	59	91	51
Nob Hill	2671	118	68	118	66	128	63	139	66	118	73	123	69
North Andrews Gardens	0521	120	67	124	68	153	64	121	63	142	71	153	68

Appendix A  
2006-07 through 2008-09 SAT-10 Reading Comprehension Results by School and Grade

School	Loc#	2006-07				2007-08				2008-09			
		Grade 1		Grade 2		Grade 1		Grade 2		Grade 1		Grade 2	
		n	%ile	n	%ile	n	%ile	n	%ile	n	%ile	n	%ile
Nova Blanche Forman	1282	128	66	122	63	128	62	116	70	119	75	132	69
Nova Dwight D. Eisenhowe	1271	119	69	116	73	124	66	116	72	130	76	122	77
Oakland Park	0031	117	37	83	50	113	41	95	49	106	<b>49</b>	107	61
Oriole	1831	128	49	108	46	104	47	131	40	103	66	124	<b>49</b>
Park Lakes	3761	212	51	186	48	189	46	176	44	213	58	212	<b>43</b>
Pinewood	2811	169	63	126	57	143	64	176	56	136	74	145	62
Royal Palm	1851	137	58	112	54	100	43	108	64	112	53	88	57
Sandpiper	3061	137	60	149	64	115	54	116	64	135	60	120	70
Village	1621	128	61	141	38	148	59	138	40	126	67	149	<b>47</b>
Welleby	2881	142	57	123	65	148	70	135	60	138	80	149	64
<b>SOUTH CENTRAL AREA</b>													
Bayview	0641	92	77	75	78	78	86	100	77	81	75	90	84
Bennett	0201	68	57	50	53	74	51	71	53	64	66	64	59
Broward Estates	0501	110	48	105	57	106	51	91	61	107	69	96	61
Central Park	2641	202	74	200	72	214	73	180	73	181	86	201	79
Country Isles	2981	138	69	168	70	156	69	146	69	143	70	148	74
Croissant Park	0221	97	55	111	57	114	59	85	55	121	70	100	57
Dillard	0271	148	51	118	47	132	56	110	42	128	57	116	<b>45</b>
Eagle Point	3461	220	72	198	77	194	69	217	76	197	76	195	79
Everglades	2942	142	83	177	75	145	79	157	84	149	87	157	82
Flamingo	2541	130	57	136	60	126	59	117	65	104	66	133	64
Foster, Stephen	0921	93	57	98	57	112	59	104	57	100	59	106	63
Fox Trail	3531	173	69	198	70	195	71	182	65	188	82	203	75
Gator Run	3642	196	73	185	76	194	71	197	77	208	77	191	77
Harbordale	0491	54	72	63	61	52	66	62	64	56	65	56	75
Indian Trace	3181	103	81	124	78	110	84	100	76	116	85	111	84
King, Martin Luther	1611	86	58	76	37	70	31	69	44	63	61	61	<b>44</b>
Lauderdale Manors	0431	113	39	100	40	115	34	85	38	86	62	96	<b>43</b>
Manatee Bay	3841	208	77	235	72	207	78	220	73	169	83	224	75
Marshall, Thurgood	3291	93	46	73	56	80	47	76	37	70	67	67	54
Meadowbrook	0761	94	50	102	51	98	54	93	52	83	66	81	55
Mirror Lake	1841	100	62	93	59	88	61	94	58	76	77	81	56
North Fork	1191	94	36	74	38	116	45	87	39	95	<b>45</b>	98	<b>49</b>
North Side	0041	85	44	72	29	83	50	64	40	68	71	76	51
Peters	0931	121	65	97	67	116	61	143	58	110	70	121	62
Plantation	0941	128	65	112	60	109	61	122	58	92	72	96	57
Plantation Park	1251	82	65	88	68	84	70	90	58	81	71	94	65
Riverland	0151	109	56	99	55	81	44	100	59	94	71	87	57
Rock Island	3701	92	46	98	42	95	57	100	45	122	67	105	<b>48</b>
Sawgrass	3401	165	62	155	62	168	58	166	63	126	76	164	65
Silver Ridge	3081	160	69	143	74	165	64	164	75	132	76	158	78
Sunland Park	0611	86	35	78	39	74	33	71	28	74	<b>33</b>	67	<b>31</b>
Tropical	0731	129	76	120	69	135	73	132	69	139	75	133	77
Walker	0321	121	57	137	51	113	65	113	46	94	67	99	<b>48</b>
Westwood Heights	0631	115	39	119	49	114	46	93	47	99	61	102	<b>47</b>
Wilton Manors	0191	101	60	103	50	89	58	92	55	104	60	85	54
Young, Virginia S.	3321	113	76	103	74	110	78	115	75	102	89	109	76
<b>SOUTH AREA</b>													
Bethune, Mary M.	0341	129	43	108	54	107	45	116	43	107	56	95	<b>44</b>
Boulevard Heights	0971	149	68	138	56	124	61	138	65	110	75	122	60
Chapel Trail	2961	182	73	139	72	169	71	181	75	142	80	163	76

Appendix A  
2006-07 through 2008-09 SAT-10 Reading Comprehension Results by School and Grade

School	Loc#	2006-07				2007-08				2008-09			
		Grade 1		Grade 2		Grade 1		Grade 2		Grade 1		Grade 2	
		n	%ile	n	%ile	n	%ile	n	%ile	n	%ile	n	%ile
Coconut Palm	3741	187	71	197	62	177	73	195	68	167	76	169	66
Colbert	0231	114	42	86	38	105	33	98	43	92	58	85	<b>44</b>
Collins	0331	64	38	52	42	54	37	67	37	48	55	50	<b>43</b>
Cooper City	1211	136	67	165	73	141	63	132	72	120	69	135	72
Coral Cove	2011	173	61	157	62	142	65	156	64	133	72	142	69
Dania	0101	92	49	67	49	72	52	81	49	89	64	73	61
Davie	2801	174	47	130	64	169	58	150	56	139	66	158	73
Dolphin Bay	3751	97	57	83	61	141	71	112	54	160	77	160	66
Driftwood	0721	130	55	116	64	138	62	126	64	106	63	121	73
Embassy Creek	3191	149	77	133	77	126	74	153	79	120	77	135	78
Fairway	1641	172	59	155	53	161	56	162	45	155	67	159	57
Griffin	2851	82	63	106	74	82	59	88	75	92	76	82	69
Hallandale	0131	205	48	212	60	217	44	177	56	204	64	192	61
Hawkes Bluff	3131	145	68	173	75	138	78	141	75	137	80	145	78
Hollywood Central	0121	114	58	109	58	133	54	106	59	126	65	110	66
Hollywood Hills	0111	145	70	131	72	123	69	147	74	118	83	114	70
Hollywood Park	1761	89	59	95	58	78	60	83	60	72	59	68	63
Lake Forest	0831	146	56	131	46	147	64	146	52	134	68	145	62
Lakeside	3591	138	65	136	72	132	68	143	71	132	78	127	77
Miramar	0531	149	67	146	53	141	62	156	53	152	73	158	60
Oakridge	0461	130	64	120	63	118	62	120	55	116	74	119	58
Orange Brook	0711	143	61	129	53	129	50	136	53	136	58	123	63
Palm Cove	3311	157	60	180	55	154	65	162	57	135	73	149	70
Panther Run	3571	116	73	118	64	122	71	123	71	114	79	131	74
Pasadena Lakes	2071	148	60	124	58	119	64	137	59	120	74	120	67
Pembroke Lakes	2661	125	70	142	74	91	70	127	73	112	83	95	76
Pembroke Pines	1221	90	62	114	59	120	52	90	55	96	64	109	62
Perry, Annabel C.	1631	122	59	102	57	127	57	128	61	112	72	114	73
Pines Lakes	2861	127	65	127	63	126	66	130	59	126	68	124	64
Sea Castle	2871	156	63	175	55	137	63	150	58	159	73	146	59
Sheridan Hills	1811	100	67	95	65	86	62	88	65	77	84	88	64
Sheridan Park	1321	102	62	134	57	111	59	110	52	114	66	98	62
Silver Lakes	3371	127	66	122	68	134	66	133	64	133	68	137	71
Silver Palms	3491	155	71	138	74	137	72	140	75	130	85	137	78
Silver Shores	3581	124	70	112	69	138	67	119	71	102	77	141	73
Stirling	0691	106	56	113	53	122	54	110	53	105	69	110	58
Sunset Lakes	3661	182	73	166	76	189	73	190	71	152	83	180	75
Sunshine	1171	150	60	153	52	147	55	151	51	141	74	151	59
Watkins	0511	123	56	120	55	108	51	126	48	131	66	116	54
West Hollywood	0161	129	46	113	49	98	49	107	47	103	65	94	53
<b>CHARTER SCHOOLS</b>													
Ben Gamla Charter	5410					50	59	50	47	72	57	68	58
Broward Community Charter	5315	44	63	26	72	19	64	34	64	13	60	17	61
Broward Community Charter West	5403	64	53	38	59	63	59	49	46	39	60	81	64
Central Charter School	5041	107	62	99	51	92	53	97	54	78	65	88	66
Charter Institute Training Center -Ftl	5131	10	25	10	30			10	20	19	<b>39</b>	12	<b>31</b>
Charter School Of Excellence	5031	56	68	52	55	53	65	53	72	53	63	48	62

Appendix A  
2006-07 through 2008-09 SAT-10 Reading Comprehension Results by School and Grade

School	Loc#	<u>2006-07</u>				<u>2007-08</u>				2008-09			
		<u>Grade 1</u>		<u>Grade 2</u>		<u>Grade 1</u>		<u>Grade 2</u>		<u>Grade 1</u>		<u>Grade 2</u>	
		<i>n</i>	<i>%ile</i>	<i>n</i>	<i>%ile</i>	<i>n</i>	<i>%ile</i>	<i>n</i>	<i>%ile</i>	<i>n</i>	<i>%ile</i>	<i>n</i>	<i>%ile</i>
Charter School Of Excellence - Davie	5271									39	66	35	59
Dayspring Charter	5411					19	28	12	28	25	<b>38</b>	21	<b>28</b>
Eagles' Nest	5355	21	26	14	29					8		4	
Excelsior Charter	5393					32	76			53	81	31	66
Florida Intercultural Academy	5361	30	80	13	66	42	68	29	76	34	89	33	76
Hollywood Academy Of Arts & Sci	5325	72	59	92	67	67	62	74	63	65	68	75	73
Kidz Choice Charter	5409					14	70			17	87	12	80
N Broward Academy Of Excellence	5161	78	63	56	58	95	65	79	65	98	64	100	64
Paragon	5375	16	55	20	55	37	35	17	40	21	59	29	56
Pembroke Pines Charter	5051	296	75	300	72	299	74	298	71	312	82	312	75
RISE Academy School of Science & Technology	5420									27	<b>48</b>	26	<b>38</b>
Somerset Academy	5141	126	74	153	71	147	61	122	66	113	71	149	73
Somerset Academy - Miramar	5405	22	78	27	53	108	58	114	53	157	69	102	69
Somerset Academy Davie	5211	33	64	38	66	25	71	25	71	25	69	26	82
Sunshine Charter	5400	11	31	14	53	16	57	14	47	16	<b>35</b>	17	51
Susie Daniels Charter	5404	26	26	29	28	40	31	33	21	23	53	24	60

Note: Percentile ranks not reported for schools where fewer than 10 students were assessed.



Appendix B  
2008-09 SAT-10 Reading Comprehension Results by Gender and Ethnicity, by Grade

School	Loc#	Gender								Ethnicity											
		Grade 1				Grade 2				Grade 1					Grade 2						
		Female		Male		Female		Male		Black		Hispanic		White		Black		Hispanic		White	
n	%ile	n	%ile	n	%ile	n	%ile	n	%ile	n	%ile	n	%ile	n	%ile	n	%ile	n	%ile		
<b>NORTH AREA</b>																					
Atlantic West	2511	71	74	74	71	66	66	76	<b>49</b>	62	<b>65</b>	41	70	22	79	60	<b>49</b>	40	59	24	62
Coconut Creek	1421	59	77	76	73	80	75	78	69	38	<b>65</b>	19	76	67	79	37	<b>62</b>	36	69	77	78
Coral Park	3041	49	77	50	68	47	76	32	76	20	<b>61</b>	23	71	51	77	11	<b>59</b>	18	<b>67</b>	42	83
Coral Springs	2551	59	70	53	71	48	67	57	59	51	65	23	75	28	73	43	<b>53</b>	24	63	26	71
Country Hills	3111	81	82	60	<b>68</b>	74	81	85	71	29	<b>65</b>	22	76	73	80	27	72	22	69	98	77
Cresthaven	0901	47	61	55	58	43	58	61	48	35	<b>48</b>	35	<b>59</b>	25	73	39	<b>39</b>	26	<b>45</b>	34	73
Cypress	1781	77	68	70	64	66	58	65	57	69	<b>63</b>	53	<b>61</b>	17	82	65	<b>54</b>	48	<b>53</b>	14	85
Deerfield Beach	0011	56	62	57	52	60	59	74	60	29	52	18	<b>42</b>	54	61	31	55	34	55	65	64
Deerfield Park	0391	52	69	61	61	53	49	55	46	101	64	7		2		96	45	5		5	
Drew Charles	3221	49	62	35	52	50	54	53	46	54	62	27	44	1		77	49	26	54		
Eagle Ridge	3441	59	81	68	84	58	84	82	74	12	<b>61</b>	25	80	78	85	8		28	<b>68</b>	80	80
Forest Hills	2631	49	84	57	79	59	74	51	<b>59</b>	24	<b>72</b>	42	80	23	87	33	<b>62</b>	36	<b>63</b>	30	76
Hunt, James S	1971	63	79	88	69	76	61	88	60	72	<b>71</b>	52	<b>68</b>	16	88	83	<b>54</b>	49	<b>59</b>	20	75
Liberty	3821	104	70	87	<b>52</b>	94	57	90	<b>45</b>	77	59	58	60	44	61	71	<b>45</b>	48	<b>44</b>	52	64
Maplewood	2741	57	72	55	75	59	74	61	64	18	71	34	<b>68</b>	51	80	25	<b>52</b>	28	73	53	76
Margate	1161	90	70	83	<b>59</b>	73	69	84	62	42	<b>58</b>	43	<b>54</b>	63	75	50	<b>47</b>	39	64	53	73
Markham, Robert C	1671	35	63	39	<b>47</b>	39	55	33	53	53	54	20	55			50	52	17	51	3	
Mcnab	0841	67	69	79	60	60	73	61	70	16	68	42	<b>54</b>	76	70	9		33	<b>60</b>	71	79
Morrow	2691	49	68	39	<b>55</b>	45	56	46	<b>38</b>	61	62	23	61	1		60	43	18	49	9	
Norcrest	0561	64	67	61	<b>53</b>	42	59	59	55	24	60	26	<b>40</b>	71	67	22	<b>53</b>	32	<b>48</b>	43	68
North Lauderdale	2231	62	57	55	48	65	49	78	47	85	52	23	50	1		122	48	15	50	2	
Palmview	1131	52	64	42	58	43	57	50	<b>46</b>	75	60	15	66	2		74	49	14	64		
Park Ridge	1951	32	66	22	57	28	35	45	40	48	61	4		2		62	36	9		1	
Park Springs	3171	62	77	86	69	69	73	74	71	13	67	28	70	88	75	19	68	32	<b>62</b>	77	75
Park Trails	3781	92	85	108	82	118	85	125	80	5		21	82	163	84	9		20	79	197	83
Parkside	3631	62	70	69	67	53	68	72	<b>51</b>	30	66	28	<b>57</b>	58	71	36	<b>54</b>	31	57	43	65
Pompano Beach	0751	38	60	55	60	40	51	50	41	61	59	11	69	16	60	56	<b>38</b>	12	<b>41</b>	18	70
Quiet Waters	3121	118	78	104	<b>63</b>	111	63	93	65	44	<b>58</b>	45	76	113	72	27	<b>51</b>	55	63	102	66
Ramblewood	2721	65	77	63	68	71	71	62	64	28	<b>63</b>	28	68	54	76	30	<b>57</b>	36	69	47	74
Riverglades	2891	67	83	60	80	81	83	66	<b>68</b>	5		17	79	91	81	6		24	76	95	75
Riverside	3031	67	85	64	79	64	76	61	74	21	<b>65</b>	28	82	68	86	20	<b>60</b>	22	74	71	77
Sanders Park	0891	56	72	42	<b>58</b>	38	60	48	53	93	66	4				81	56	5			
Tamarac	2621	79	69	92	62	78	67	98	59	46	66	61	63	49	67	54	<b>60</b>	56	<b>57</b>	55	71
Tedder	0571	58	60	68	<b>39</b>	43	47	42	53	81	43	33	61	4		59	51	18	40	2	
Tradewinds	3481	84	78	93	71	73	75	84	68	13	75	45	<b>58</b>	94	77	11	<b>66</b>	53	<b>61</b>	79	78
Westchester	2681	72	80	100	75	85	75	84	73	34	<b>69</b>	33	<b>65</b>	86	85	32	<b>63</b>	48	70	73	78
Winston Park	3091	108	71	103	63	87	67	101	69	27	<b>56</b>	47	<b>60</b>	106	70	34	<b>60</b>	39	<b>58</b>	97	74

Appendix B  
2008-09 SAT-10 Reading Comprehension Results by Gender and Ethnicity, by Grade

School	Loc#	Gender								Ethnicity											
		Grade 1				Grade 2				Black		Grade 1		White		Black		Grade 2		White	
		Female		Male		Female		Male		n	%ile	n	%ile	n	%ile	n	%ile	n	%ile	n	%ile
<b>NORTH CENTRAL AREA</b>																					
Banyan	2001	75	79	77	69	66	63	73	55	76	76	31	<b>63</b>	29	77	82	<b>58</b>	26	<b>50</b>	21	69
Broadview	0811	57	72	89	71	81	69	64	69	58	64	68	78	12	<b>60</b>	58	<b>62</b>	61	72	16	78
Castle Hill	1461	47	60	66	66	40	47	60	43	110	64			3		100	45				
Challenger	3771	92	76	87	<b>58</b>	89	68	97	61	73	<b>65</b>	55	66	33	76	68	61	56	66	45	69
Endeavour	3301	42	67	54	<b>51</b>	46	60	51	52	93	57	2				91	55	2		1	
Floranada	0851	54	78	50	71	45	74	57	69	13	<b>59</b>	28	78	57	75	8		28	72	61	74
Horizon	2531	69	82	66	72	72	72	77	<b>59</b>	55	<b>73</b>	36	78	28	84	65	58	35	68	33	68
Larkdale	0621	45	53	33	52	31	51	37	<b>34</b>	77	52					68	41				
Lauderhill, P T	1381	41	70	60	<b>54</b>	51	47	75	38	99	60			2		118	41	1		3	
Lloyd Estates	1091	30	69	43	<b>53</b>	47	56	44	<b>45</b>	38	63	24	53	7		44	<b>44</b>	33	<b>51</b>	12	70
Nob Hill	2671	62	75	56	71	54	73	69	66	38	<b>63</b>	30	74	37	81	55	66	21	<b>57</b>	40	76
North Andrews Gardens	0521	72	75	70	66	74	71	79	66	19	79	64	68	53	69	25	<b>61</b>	73	65	49	75
Nova Eisenhower, Dwight	1271	73	76	57	76	65	81	57	72	46	72	30	<b>69</b>	42	81	58	<b>72</b>	29	<b>75</b>	30	87
Nova Forman, Blanche	1282	60	79	59	71	66	73	66	64	51	73	30	75	25	80	53	<b>64</b>	33	<b>63</b>	36	76
Oakland Park	0031	49	54	57	44	49	62	58	61	43	48	38	48	23	53	40	<b>53</b>	48	<b>61</b>	14	75
Oriole	1831	48	71	55	62	55	53	69	46	97	68	3		1		114	51	3		2	
Park Lakes	3761	105	64	108	<b>51</b>	97	49	115	<b>39</b>	177	59	27	47	4		185	43	12	29	3	
Pinewood	2811	75	81	61	<b>64</b>	76	66	69	57	83	75	32	75	13	77	99	61	29	65	6	
Royal Palm	1851	52	64	60	<b>43</b>	30	58	58	56	109	54	2		1		85	57	1			
Sandpiper	3061	65	69	70	<b>50</b>	53	75	67	<b>65</b>	52	<b>52</b>	29	<b>57</b>	48	68	46	<b>61</b>	32	74	32	74
Village	1621	61	79	65	<b>53</b>	70	55	79	<b>40</b>	112	67	6		4		125	45	8		3	
Welleby	2881	69	83	69	78	73	72	76	<b>56</b>	56	77	41	81	27	79	59	<b>55</b>	28	69	43	73
<b>SOUTH CENTRAL AREA</b>																					
Bayview	0641	42	83	39	<b>64</b>	44	87	46	81	6		8		65	76	4		6		74	84
Bennett	0201	30	66	34	66	22	62	42	57	33	72	12	<b>48</b>	13	62	28	58	11	<b>48</b>	19	62
Broward Estates	0501	46	70	61	68	50	62	46	59	106	68					93	60	1		2	
Central Park	2641	90	88	91	85	96	84	105	74	20	<b>73</b>	35	84	102	88	25	71	32	76	126	81
Country Isles	2981	68	79	75	<b>61</b>	84	77	64	69	7		55	<b>60</b>	65	79	4		43	71	84	76
Croissant Park	0221	49	73	72	68	46	59	54	55	39	<b>59</b>	30	<b>63</b>	41	82	26	56	37	<b>48</b>	26	63
Dillard	0271	59	55	69	59	53	51	63	<b>40</b>	125	58	1				116	45				
Eagle Point	3461	81	82	116	<b>71</b>	97	79	98	78	8		80	70	86	80	9		94	76	83	82
Everglades	2942	72	90	77	84	75	84	82	79	10	<b>74</b>	46	83	78	91	4		54	79	78	82
Flamingo	2541	50	68	54	64	62	62	71	66	3		41	<b>54</b>	52	74	5		52	<b>56</b>	72	69
Foster, Stephen	0921	45	68	55	<b>51</b>	49	69	57	<b>58</b>	18	<b>45</b>	42	<b>56</b>	32	69	30	<b>53</b>	37	<b>58</b>	33	73
Fox Trail	3531	91	84	97	80	89	78	114	73	12	<b>71</b>	42	80	112	84	12	77	54	76	118	76
Gator Run	3642	85	80	123	75	96	81	95	73	10	<b>65</b>	60	<b>68</b>	130	81	10	<b>60</b>	63	<b>70</b>	102	81
Harbordale	0491	26	66	30	65	22	79	34	72	12	72	14	<b>51</b>	25	70	6		10	<b>65</b>	35	79
Indian Trace	3181	67	87	49	81	48	81	63	86	1		44	80	62	88	3		39	81	59	87
King, Martin Luther	1611	29	68	34	<b>54</b>	29	59	32	<b>30</b>	63	61					61	44				
Lauderdale Manors	0431	40	65	46	60	46	47	50	38	82	61	3				94	42	2			

Appendix B  
2008-09 SAT-10 Reading Comprehension Results by Gender and Ethnicity, by Grade

School	Loc#	Gender								Ethnicity											
		Grade 1				Grade 2				Black		Grade 1		White		Black		Grade 2		White	
		Female		Male		Female		Male		n	%ile	n	%ile	n	%ile	n	%ile	n	%ile	n	%ile
Manatee Bay	3841	84	85	85	80	102	78	122	73	16	75	63	79	77	85	13	74	91	72	95	78
Marshall, Thurgood	3291	29	71	41	64	39	54	28	53	66	67	3		1		61	52	3		1	
Meadowbrook	0761	41	68	42	65	34	59	47	52	10	67	62	66	7		22	49	48	56	6	
Mirror Lake	1841	36	80	40	74	30	56	51	57	37	76	11	83	22	75	34	<b>50</b>	21	<b>55</b>	22	66
North Fork	1191	50	53	45	<b>35</b>	50	57	48	<b>41</b>	92	45	1				89	48	4		3	
North Side	0041	23	81	45	<b>66</b>	47	57	29	<b>43</b>	64	71	3				73	51	1			
Peters	0931	51	71	59	69	58	62	63	62	50	69	21	76	23	68	56	<b>57</b>	19	65	32	70
Plantation	0941	45	72	47	72	36	65	60	<b>51</b>	85	72	5				90	55	4			
Plantation Park	1251	41	71	40	71	41	73	53	<b>58</b>	26	<b>61</b>	19	<b>62</b>	29	81	24	<b>46</b>	19	<b>61</b>	45	75
Riverland	0151	46	74	48	67	34	55	53	58	55	69	28	69	9		49	56	32	59	3	
Rock Island	3701	59	67	63	66	51	53	54	43	118	66	2				102	47			1	
Sawgrass	3401	64	76	62	75	81	68	83	61	25	75	35	<b>69</b>	52	82	37	<b>50</b>	50	67	66	70
Silver Ridge	3081	58	78	74	74	78	78	80	78	14	71	29	72	80	77	15	<b>70</b>	27	<b>69</b>	109	81
Sunland Park	0611	39	38	35	28	24	38	43	28	73	33			1		66	31	1			
Tropical	0731	70	80	69	<b>69</b>	61	77	72	77	21	<b>62</b>	32	<b>66</b>	66	82	22	<b>69</b>	37	<b>71</b>	62	82
Walker	0321	47	78	47	<b>54</b>	42	50	57	46	91	67	3				96	48	2			
Westwood Heights	0631	43	65	56	58	42	59	60	<b>39</b>	88	60	7		2		95	45	4		1	
Wilton Manors	0191	49	74	55	<b>47</b>	35	60	50	50	50	<b>51</b>	20	<b>63</b>	22	76	49	<b>51</b>	18	<b>49</b>	14	67
Young, Virginia S.	3321	46	92	56	86	53	82	56	<b>70</b>	26	87	14	91	53	91	28	<b>66</b>	10	86	59	78
SOUTH AREA																					
Bethune, Mary M	0341	54	60	53	52	48	50	47	<b>39</b>	80	54	17	60	5		66	42	17	49	10	50
Boulevard Heights	0971	53	81	57	<b>70</b>	52	68	70	<b>54</b>	18	80	54	<b>68</b>	27	82	16	<b>58</b>	70	<b>59</b>	26	70
Chapel Trail	2961	73	82	69	76	70	81	93	72	19	78	55	80	58	79	20	78	68	75	55	75
Coconut Palm	3741	73	77	94	76	87	73	82	<b>58</b>	60	<b>69</b>	73	<b>76</b>	17	91	62	<b>60</b>	61	65	27	71
Colbert	0231	50	64	42	<b>52</b>	48	45	37	43	80	56	9		1		66	42	16	46	3	
Collins	0331	23	66	25	<b>45</b>	18	59	32	<b>34</b>	40	54	3		3		37	45	5		7	
Cooper City	1211	57	75	63	<b>62</b>	65	81	70	<b>63</b>	7		24	68	76	69	6		29	70	90	76
Coral Cove	2011	58	77	75	68	65	73	77	65	44	<b>65</b>	68	75	14	80	42	68	75	71	8	
Dania	0101	40	74	49	<b>55</b>	35	71	38	<b>51</b>	32	<b>51</b>	28	<b>64</b>	18	78	25	<b>53</b>	17	58	21	64
Davie	2801	64	72	75	<b>60</b>	79	75	79	70	15	68	86	<b>61</b>	32	75	19	<b>48</b>	69	73	60	77
Dolphin Bay	3751	79	83	81	<b>70</b>	81	71	79	62	41	70	76	78	24	80	43	<b>53</b>	71	66	23	76
Driftwood	0721	51	69	55	<b>58</b>	55	74	66	71	22	60	45	68	29	60	15	71	54	70	34	72
Embassy Creek	3191	67	80	53	73	68	81	67	74	10	73	26	71	72	80	8		32	71	77	79
Fairway	1641	73	73	82	<b>60</b>	84	58	75	55	126	65	15	60	2		142	57	12	51	1	
Griffin	2851	48	82	44	<b>70</b>	37	73	45	66	3		25	72	55	76	4		28	65	44	71
Hallandale	0131	95	70	109	<b>57</b>	99	66	93	56	90	62	75	63	27	70	81	<b>57</b>	85	64	15	72
Hawkes Bluff	3131	63	84	74	75	67	80	78	76	11	79	37	83	72	75	10	<b>59</b>	33	<b>70</b>	90	83
Hollywood Central	0121	57	72	69	<b>60</b>	56	65	54	67	11	65	38	61	69	69	17	<b>57</b>	23	62	57	69
Hollywood Hills	0111	61	85	57	82	52	76	62	<b>65</b>	17	82	26	82	62	83	15	<b>50</b>	45	69	49	78
Hollywood Park	1761	33	65	39	<b>53</b>	30	71	38	<b>56</b>	17	<b>49</b>	41	61	11	63	13	60	40	64	10	68
Lake Forest	0831	61	74	73	<b>63</b>	81	66	64	57	77	69	33	66	13	59	94	59	37	63	6	

Appendix B  
2008-09 SAT-10 Reading Comprehension Results by Gender and Ethnicity, by Grade

School	Loc#	Gender								Ethnicity											
		Grade 1				Grade 2				Grade 1					Grade 2						
		Female		Male		Female		Male		Black		Hispanic		White		Black		Hispanic		White	
n	%ile	n	%ile	n	%ile	n	%ile	n	%ile	n	%ile	n	%ile	n	%ile	n	%ile	n	%ile	n	%ile
Lakeside	3591	63	84	69	<b>73</b>	62	79	65	74	25	79	50	77	42	78	22	<b>66</b>	55	78	38	84
Miramar	0531	88	77	64	67	73	62	85	59	86	77	47	66	12	72	99	58	47	60	6	
Oakridge	0461	54	82	62	<b>66</b>	55	59	64	57	36	74	39	69	32	75	41	52	49	62	24	62
Orange Brook	0711	67	61	69	55	63	67	60	59	64	61	40	<b>49</b>	22	61	58	66	38	<b>56</b>	15	75
Palm Cove	3311	62	81	73	<b>64</b>	74	73	75	67	70	71	38	68	11	77	74	<b>68</b>	45	<b>69</b>	13	81
Panther Run	3571	44	81	70	78	67	82	64	<b>64</b>	19	75	50	78	31	84	26	<b>66</b>	56	70	41	80
Pasadena Lakes	2071	54	80	66	<b>68</b>	68	72	52	<b>60</b>	26	<b>64</b>	40	72	42	76	31	<b>43</b>	44	70	37	80
Pembroke Lakes	2661	57	86	55	80	48	79	47	74	12	85	57	81	36	84	16	<b>64</b>	46	77	29	82
Pembroke Pines	1221	39	76	57	<b>55</b>	54	69	55	<b>54</b>	27	64	33	65	21	60	32	<b>49</b>	46	64	19	71
Perry, Annabel C	1631	59	79	53	<b>63</b>	61	73	53	72	91	71	15	77	4		96	72	14	80	1	
Pines Lakes	2861	64	74	62	<b>62</b>	63	69	61	<b>58</b>	32	71	58	71	27	67	42	64	52	61	23	70
Sea Castle	2871	72	75	87	72	73	66	73	<b>51</b>	109	76	30	66	6		108	58	17	63	8	
Sheridan Hills	1811	40	89	37	<b>77</b>	37	67	51	61	13	83	25	80	30	87	15	61	35	65	31	62
Sheridan Park	1321	57	71	57	61	44	62	54	61	19	77	47	60	37	<b>65</b>	16	<b>54</b>	46	60	27	69
Silver Lakes	3371	68	72	65	65	54	74	83	70	24	68	72	69	26	67	27	73	77	70	19	79
Silver Palms	3491	67	88	63	82	60	78	77	77	20	89	55	<b>80</b>	31	91	20	76	62	73	36	82
Silver Shores	3581	61	79	41	75	75	78	66	<b>67</b>	34	<b>69</b>	41	83	10	80	42	67	56	74	17	77
Stirling	0691	42	75	63	65	53	58	57	58	15	<b>54</b>	44	69	40	78	13	57	46	<b>51</b>	37	62
Sunset Lakes	3661	63	85	89	81	92	79	88	71	29	77	69	80	41	87	33	69	88	75	38	79
Sunshine	1171	68	75	73	72	65	63	86	55	104	73	23	76	5		97	56	40	65	8	
Watkins	0511	66	69	65	63	49	53	67	54	108	67	14	46	2		87	54	22	49	5	
West Hollywood	0161	64	73	39	<b>49</b>	52	56	42	50	26	80	44	58	17	<b>59</b>	22	<b>49</b>	50	<b>49</b>	10	64
<b>CHARTER SCHOOLS</b>																					
Ben Gamla Charter	5410	33	58	39	55	32	65	36	<b>52</b>	2		7		63	57	2		17	55	48	60
Broward Community Charter	5315	9		4		8		9		9		3		1		8		5		3	
Broward Community Charter West	5403	19	<b>54</b>	20	66	42	62	39	67	11	74	9		12	<b>62</b>	27	<b>58</b>	20	69	26	69
Central Charter School	5041	34	69	44	61	48	68	40	63	76	64					88	66				
Charter School Of Excellence	5031	25	64	28	62	25	65	23	58	40	61	7		3		32	60	7		4	
Charter School Of Excellence- Davie	5271	21	73	18	<b>56</b>	17	59	18	59	16	76	9		9		20	62	7		2	
City Of Pembroke Pines Charter	5051	163	85	149	80	160	80	152	70	65	76	131	84	82	82	76	75	124	72	73	79
Dayspring Elementary Charter	5411	14	38	11	37	8		13	24	20	39	4				17	25	3			
Eagles' Nest	5355	3		5		2		2		7				1		2				2	
Excelsior Charter Of Broward	5393	28	84	25	78	13	75	18	<b>60</b>	17	82	14	<b>68</b>	15	86	11	60	8		6	

Appendix B  
2008-09 SAT-10 Reading Comprehension Results by Gender and Ethnicity, by Grade

School	Loc#	Gender								Ethnicity											
		Grade 1				Grade 2				Black		Grade 1 Hispanic		White		Black		Grade 2 Hispanic		White	
		Female		Male		Female		Male		n	%ile	n	%ile	n	%ile	n	%ile	n	%ile	n	%ile
Florida Intercultural Academy	5361	13	93	21	85	18	83	15	<b>66</b>	6		15	<b>74</b>	11	96	6		13	74	8	
Hollywood Academy Of Arts&Sci	5325	32	66	33	71	36	80	39	<b>65</b>	12	<b>60</b>	19	67	31	76	13	<b>59</b>	25	<b>64</b>	30	81
Institute Training Center FTL	5131	7		12	48	8		4		18	35			1		12	31				
Kidz Choice Charter School	5409	8		9		6		6		2		11	84	4		1		8		2	
N Broward Academy Of Excellence	5161	52	64	46	64	53	70	47	<b>55</b>	71	63	9		8		66	61	16	63	8	
Paragon	5375	10	59	11	58	19	54	10	61	12	59	4		3		18	56	4		7	
RISE Academy		13	46	14	49	11	51	15	<b>30</b>	27	48					26	38				
Somerset Academy	5141	49	71	64	70	78	73	71	72	33	<b>69</b>	51	<b>67</b>	15	80	23	73	90	71	15	69
Somerset Academy Miramar	5405	81	71	76	67	51	75	51	<b>62</b>	63	70	71	68	11	66	42	66	37	70	11	72
Somerset Academy Davie	5211	12	76	13	<b>62</b>	17	82	9		3		12	66	9		4		12	82	10	86
Sunshine Elementary Charter	5400	4		12	33	11	50	6		6		6		2		6		6		2	
Susie Daniels Charter	5404	7		16	47	12	72	12	<b>47</b>	23	53					21	60			1	

Note: Percentile ranks not reported for schools where fewer than 10 students were assessed.

Note: Achievement gaps of more than 10 percentile ranks are presented in bold.