

**THE SCHOOL BOARD OF BROWARD COUNTY, FLORIDA
OFFICE OF THE SUPERINTENDENT**

**JAMES F. NOTTER
SUPERINTENDENT OF SCHOOLS**

Telephone: (754) 321-2600

Facsimile: (754) 321-2701

Signatures on file.

December 21, 2007

TO: School Board Members

FROM: Katherine Blasik, Ph.D., Associate Superintendent
Research, Evaluation, Assessment & Boundaries

VIA: James F. Notter
Superintendent of Schools

SUBJECT: **2007-08 RESULTS OF THE FLORIDA KINDERGARTEN READINESS
SCREENER (FLKRS)**

The Florida Department of Education (FDOE) has released the results of the 2007-08 administration of the Florida Kindergarten Readiness Screener (FLKRS). State statute requires each school district to administer the screening instrument to kindergarten students within the first 30 days of each school year. The FLKRS consists of a subset of the Early Childhood Observation System (ECHOS), an observational instrument that is used to monitor skills, knowledge, and behaviors a student demonstrates or needs to develop; and two probes from the Dynamic Indicators of Basic Early Literacy Skills (DIBELS) assessment.

The ECHOS is a brief screening instrument that is administered individually to each child and provides an overview of development in seven areas: Language and Literacy, Mathematics, Social and Personal Skills, Science, Social Studies, Physical Development and Fitness, and Creative Arts. The ECHOS results yield an overall measure of each student's readiness for kindergarten and are reported as one of three categories: "Consistently Demonstrating" – the child demonstrated what he or she should know and be able to do at the beginning of kindergarten, "Emerging/Progressing" – the child demonstrated some of the skills he or she needs to know or be able to do at the beginning of kindergarten, or "Not Yet Demonstrating" – appropriate skill development was not yet demonstrated during the screening.

The DIBELS is a set of standardized, individually administered measures of early literacy development. They are designed to be short (one minute) fluency measures used to regularly monitor the development of pre-reading and early reading skills. Each measure has been thoroughly researched and has proven to be a reliable and valid indicator of early literacy development and predictive of later reading proficiency, thereby aiding in the early identification of students who are not progressing as expected. For the purposes of the FLKRS, the first two measures of the DIBELS are utilized: Letter Naming Fluency, measuring the child's proficiency in naming upper and lowercase letters, and Initial Sounds Fluency, assessing the child's ability to recognize the beginning sounds of an orally-presented word. The results of each measure of the DIBELS are reported as falling into one of four categories that describe the risk level for the child related to difficulty achieving early literacy benchmark goals, defined as "Above Average" (AA), "Low Risk" (LR), "Moderate Risk" (MR), and "High Risk" (HR).

An “Above Average” classification reflects that the child’s performance was at or above the 60th percentile, the “Low Risk” classification reflects that the child’s performance was at grade level, the “Moderate Risk” classification reflects that the child’s performance was moderately below grade level and additional intervention is needed, and the “High Risk” classification reflects that the child’s performance was seriously below grade level and substantial intervention is needed.

Please note that although the FDOE has recently released the State, district, and school summary data from the 2007-08 FLKRS administration, individual student results have been available to teachers since the time of the test administration. The FLKRS is scored immediately after testing by the administrator and the score sheets provide all of the information needed to evaluate each student’s performance. Teachers are encouraged to use the data obtained through the FLKRS instruments to inform parents of their child’s readiness for kindergarten and areas of strength and need. The FDOE emphasizes that it is important for teachers and parents to understand that the FLKRS screening instruments are not detailed diagnostic tools, nor are they predictive of future performance on other assessments. However, the FDOE does recommend that if a child’s score falls into the “Not Yet Demonstrating” category on the ECHOS and the DIBELS identifies the student’s status as “High Risk,” a specific academic improvement plan may be needed. In Broward County, these students are monitored through ongoing informal assessments in the kindergarten classroom, and teachers implement appropriate interventions and specialized instructional strategies to assist students in developing the necessary skills.

The FDOE memorandum titled “Results of 2007 Administration – Florida Kindergarten Readiness Screener (FLKRS)” and the State Report of District Results are attached. In general, Broward results lag behind the State distribution. Table 1 and Figure 1 below summarize ECHOS results for the District and State. The table shows that 39 percent of Broward students entering kindergarten in the fall of 2007 were considered “Consistently Demonstrating” at that time, an increase of one percentage point over the previous year. Across the State, 48 percent of students entering kindergarten were considered “Consistently Demonstrating,” a six percentage point increase over 2006-07. Only two years of ECHOS data is reported as this is the second year of administration.

Table 1.

ECHOS Results 2006-07 and 2007-08.

| | | Number Reported | <i>Consistently Demonstrating</i> | <i>Emerging/Progressing</i> | <i>Not Yet Demonstrating</i> |
|---------|---------|-----------------|-----------------------------------|-----------------------------|------------------------------|
| Broward | 2006-07 | 17,535 | 38% | 49% | 14% |
| | 2007-08 | 16,789 | 39% | 49% | 12% |
| Florida | 2006-07 | 184,124 | 42% | 44% | 14% |
| | 2007-08 | 180,351 | 48% | 40% | 12% |

*Due to rounding procedures, sums of percentages may not equal 100%.

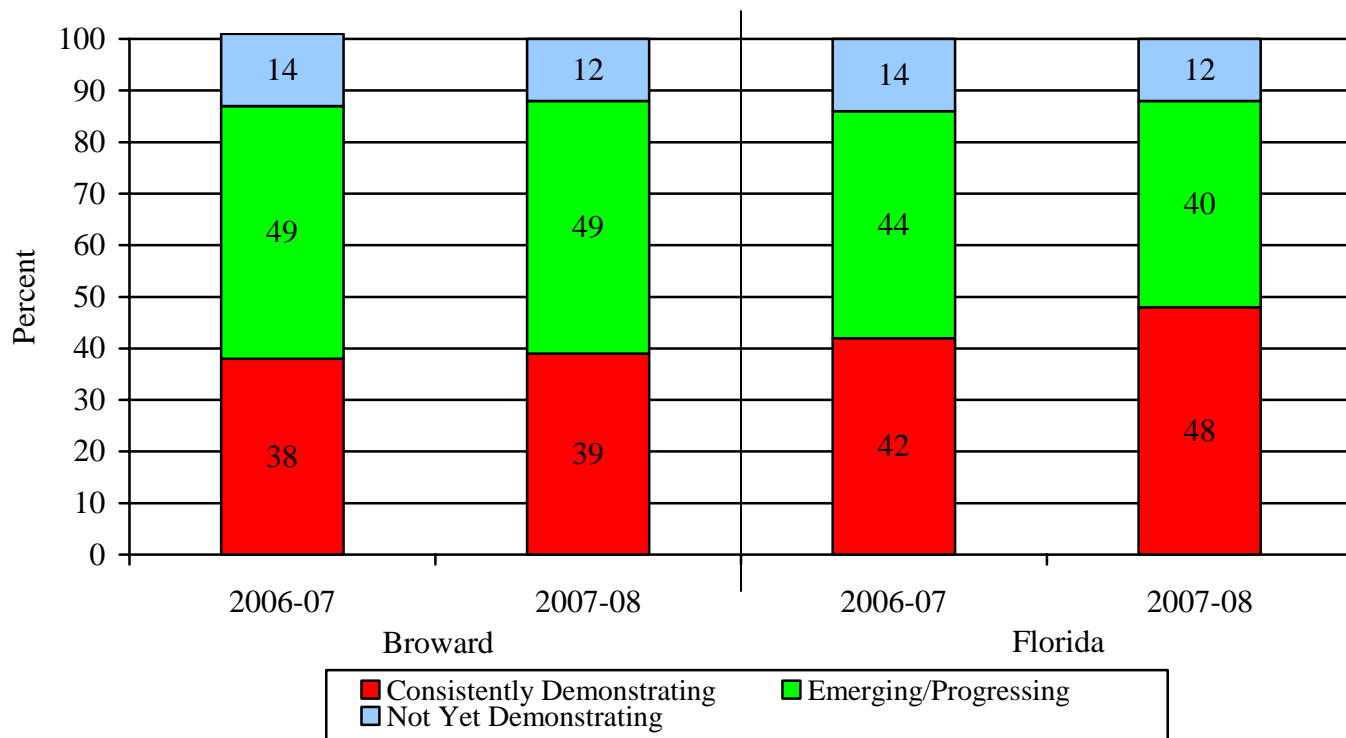


Figure 1. ECHOS Results 2006-07 and 2007-08.

Also attached is the District Report of School Results. Analysis of this report reveals:

- Of the 153 Broward elementary schools reporting ECHOS results, 49 (32%) equaled or exceeded the State in the proportion of students considered “Consistently Demonstrating”.
- Notably, of the 112 schools in Broward County which reported ECHOS and DIBELS data that were below the State average for one or more subtest, 72 (64%) are schools receiving Title I services, a federally-funded program for economically disadvantaged children.

With regard to the two DIBELS measures, Letter Naming Fluency and Initial Sounds Fluency, results for students in Broward County compare favorably to the State distribution. Tables 2 and 3 and Figures 2 and 3 display the DIBELS results for Broward County and the State. As the DIBELS measures were included as part of the School Readiness Uniform Screening System (SRUSS) administrations prior to FLKRS implementation, three years of data are reported. As noted in Table 2, this year in the area of Letter Naming Fluency, 69% of Broward students scored in the “Above Average” category compared to 58% of students across the State. Furthermore, only 10% of students in Broward were considered to be “High Risk” as assessed by the DIBELS Letter Naming Fluency measure, as compared to 15% of students Statewide. As noted in Table 3, this year in the area of Initial Sounds Fluency, 47% of Broward students scored in the “Above Average” category, as compared to 45% of students across the State. When 2007-08 results are compared with data from the 2006-07 school year, increases are noted in the percent of students scoring in the “Above Average” category in Broward and across the State.

Table 2.

DIBELS Letter Naming Fluency Results 2005-06 through 2007-08.

| | | Letter Naming Fluency | | | | | | | | |
|---------|-----------------|-----------------------|----------|-----------------|---------|----------|-----------------|---------|----------|--|
| | | 2005-06 | | | 2006-07 | | | 2007-08 | | |
| | Number Reported | Status | Percent* | Number Reported | Status | Percent* | Number Reported | Status | Percent* | |
| Broward | 17,757 | AA | 61 | 17,168 | AA | 66 | 16,521 | AA | 69 | |
| | | LR | 13 | | LR | 12 | | LR | 11 | |
| | | MR | 13 | | MR | 10 | | MR | 10 | |
| | | HR | 14 | | HR | 11 | | HR | 10 | |
| Florida | 178,953 | AA | 50 | 182,278 | AA | 56 | 177,996 | AA | 58 | |
| | | LR | 14 | | LR | 14 | | LR | 14 | |
| | | MR | 16 | | MR | 14 | | MR | 14 | |
| | | HR | 19 | | HR | 16 | | HR | 15 | |

*Due to rounding procedures, sums of percentages may not equal 100%.

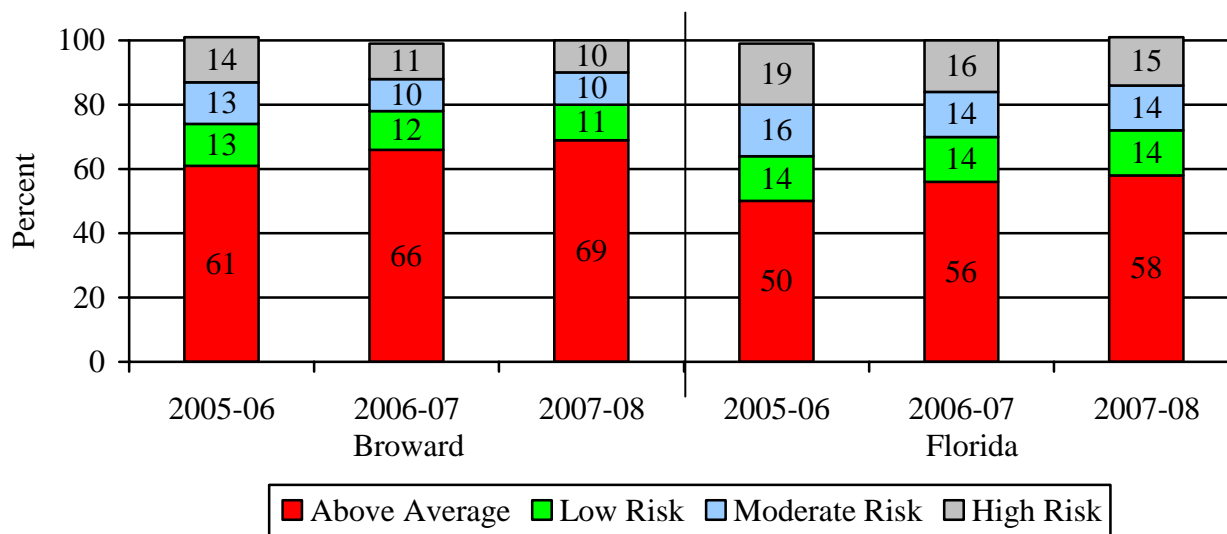


Figure 2. DIBELS Letter Naming Fluency 2005-06 through 2007-08.

Table 3.

DIBELS Initial Sounds Fluency Results 2005-06 through 2007-08.

| | | Initial Sounds Fluency | | | | | | | | |
|---------|-----------------|------------------------|----------|-----------------|---------|----------|-----------------|---------|----------|--|
| | | 2005-06 | | | 2006-07 | | | 2007-08 | | |
| | Number Reported | Status | Percent* | Number Reported | Status | Percent* | Number Reported | Status | Percent* | |
| Broward | 17,287 | AA | 45 | 16,542 | AA | 45 | 16,109 | AA | 47 | |
| | | LR | 19 | | LR | 20 | | LR | 20 | |
| | | MR | 17 | | MR | 19 | | MR | 18 | |
| | | HR | 19 | | HR | 16 | | HR | 15 | |
| Florida | 172,901 | AA | 41 | 176,957 | AA | 44 | 173,214 | AA | 45 | |
| | | LR | 20 | | LR | 19 | | LR | 19 | |
| | | MR | 20 | | MR | 19 | | MR | 18 | |
| | | HR | 20 | | HR | 18 | | HR | 17 | |

*Due to rounding procedures, sums of percentages may not equal 100%.

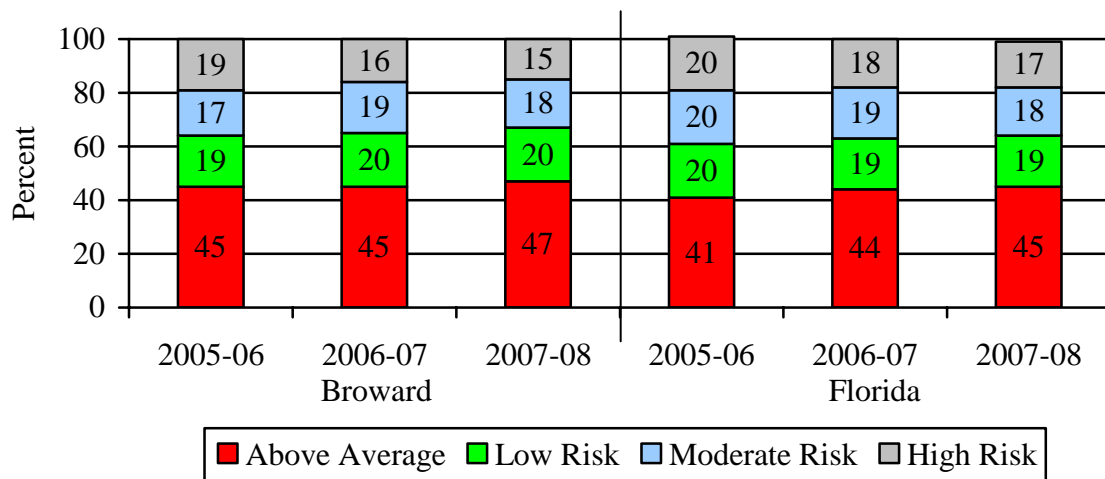


Figure 3
DIBELS Initial Sounds Fluency 2005-06 through 2007-08.

An analysis of the attached District Report of School Results reveals that out of 148 Broward schools reporting DIBELS results:

- 120 schools (81%) performed at or above the State average in terms of percentage of students scoring “Above Average” in Letter Naming Fluency.
- Of the 29 schools performing below the State average in Letter Naming Fluency, 27 (93%) schools receive Title I services.
- 76 schools (49%) performed at or above the State average in terms of percentage of students scoring “Above Average” in Initial Sounds Fluency.
- Of the 78 schools performing below the State average in Initial Sounds Fluency, 57 (73%) receive Title I services.

In conclusion, information derived from the FLKRS is intended to serve multiple purposes. First, it is designed to assist teachers in understanding the developmental level and early literacy skills of children entering kindergarten and inform instruction for struggling students. In addition, information derived from the screening system is expected to aid educators in curriculum planning and improving school readiness programs and services for preschool-age children. To this end, the District departments of Primary Education and Child Development Services continue to work in close cooperation, analyzing data gleaned from each administration of the DIBELS beginning in 2002-03, and from ECHOS beginning in 2006-07, tracking students longitudinally, and working towards alignment of curriculum and assessment tools for preschool and primary education programs. Collaboration between these departments will better enable educators to prepare students to become successful learners in preschool, kindergarten, first grade, and beyond.

Attached to this memorandum is the Florida Commissioner of Education, Dr. Eric J. Smith’s memorandum, “Results of 2007 Administration – Florida Kindergarten Readiness Screener (FLKRS)”, and the FDOE FLKRS “State Report of District Results Fall 2007”. Also attached are two DIBELS tables depicting the percent change from 2006-07 to 2007-08, by district, for Letter Naming Fluency and Initial Sound Fluency; two maps depicting the percent change from 2006-07 to 2007-08, by district, for Letter Naming Fluency and Initial Sound Fluency; two maps depicting the above

average/low risk kindergarten students at or above the State average, by district, for the 2006-07 and 2007-08 school years.

This memorandum and the attached documents can be accessed on the Student Assessment & School Performance website at <http://www.broward.k12.fl.us/studentassessment/assessmentreleases.htm>. If you have any questions regarding this release, please feel free to contact **Paul Houchens, Director, Student Assessment & School Performance, at (754) 321-4257.**

JFN/KAB/PH:dg

Attachments

- Florida Commissioner of Education, Dr. Eric J. Smith's memorandum, "Results of 2007 Administration – Florida Kindergarten Readiness Screener (FLKRS)"
- FLKRS State Report of Broward School Results, Fall 2007
- ECHOS District Results Percent Change 2006-07 to 2007-08 (Chart)
- ECHOS District Results Percent Change 2006-07 to 2007-08 (Map)
- DIBELS Letter Naming Fluency Percent Change 2006-07 to 2007-08 (Chart)
- DIBELS Letter Naming Fluency Percent Change 2006-07 to 2007-08 (Map)
- DIBELS Initial Sound Percent Change 2006-07 to 2007-08 (Chart)
- DIBELS Initial Sound Percent Change 2006-07 to 2007-08 (Map)

cc: Executive Leadership Team
Area Directors
Elementary School Principals
Diane Carr, Executive Director, Core Curriculum
Leslie Brown, Executive Director, Educational Programs
Ellen Flynn, Director, Primary Education
PTA
DAC



Dr. Eric J. Smith
Commissioner of Education



FLORIDA DEPARTMENT OF EDUCATION

STATE BOARD OF EDUCATION

T. WILLARD FAIR, *Chairman*

Members

DONNA G. CALLAWAY

DR. AKSHAY DESAI

ROBERTO MARTÍNEZ

PHOEBE RAULERSON

KATHLEEN SHANAHAN

LINDA K. TAYLOR

December 11, 2007

MEMORANDUM

TO: District School Superintendents

FROM: Dr. Eric J. Smith

SUBJECT: Results of 2007 Administration – Florida Kindergarten Readiness Screener

Consistent with the Department of Education's strategic imperative to improve student learning and independence, we are pleased to provide you with the results of the 2007 Florida Kindergarten Readiness Screener. These results are especially noteworthy as fifty-percent (50%) of Florida's 2007-08 kindergarteners participated in Florida's Voluntary Prekindergarten (VPK) Education Program in 2006-07.

[Section 1002.69\(1\), Florida Statutes](#), (F.S.) directed the Florida Department of Education to establish a kindergarten readiness screening based upon standards adopted by the State Board of Education, under [Section 1002.67\(1\), F.S.](#), for the Voluntary Prekindergarten (VPK) Education Program. These VPK Education Standards describe what children should know and be able to do at the end of the VPK year in the areas of physical health, approaches to learning, social and emotional development, language and communication, emergent literacy, cognitive development and general knowledge, and motor development.

For the second consecutive year, the 2007 Kindergarten Screening consists of a subset of the Early Childhood Observation System (ECHOS) and two measures from the Dynamic Indicators of Basic Early Literacy Skills (DIBELS) and is administered within the first 30 days of kindergarten. ECHOS is a brief observational screening instrument that is designed to measure a child's performance across seven developmental areas that are aligned with the VPK Education Standards. The two DIBELS measures, Letter Naming Fluency (LNF) and Initial Sound Fluency (ISF), are screening instruments designed to measure specific skills that are important in learning to read and that are specifically aligned with Florida's VPK standards in the area of emergent literacy. This is the fourth consecutive year these measures were administered as part of Florida's kindergarten screening.

The results from the kindergarten screening data are used to determine the readiness of children entering kindergarten for the first time in 2007-08, to inform classroom instruction, and to provide useful information to parents. These data will also be used to annually calculate a readiness rate for private and public school providers of the VPK Education Program, as required by [Section 1002.69\(2\)&\(5\), F.S.](#)

READINESS CATEGORIES USED FOR REPORTING

The results of the ECHOS were calculated by using the ratings teachers assigned to 19 activities as a result of their on-going classroom observation. Scores are reported for FLKRS/ECHOS in the following readiness categories:

- Consistently Demonstrating** - the child demonstrated what he or she should know and be able to do at the beginning of kindergarten
- Emerging/Progressing** - the child demonstrated some of the skills he or she needs to know or be able to do at the beginning of kindergarten
- Not Yet Demonstrating** - appropriate skill development was not yet demonstrated during the screening.

The results of the DIBELS are based on two measures of the instrument that were administered by local school staff. Scores were calculated based on kindergarten students' performance on Letter Naming Fluency (LNF) and Initial Sound Fluency (ISF). Scores for both measures are reported in the following categories:

- Above Average** - the child's performance was at or above the 60th percentile
- Low Risk** - the child's performance was at grade level
- Moderate Risk** - the child's performance was moderately below grade level and additional intervention is needed
- High Risk** - the child's performance was seriously below grade level and substantial intervention is needed.

Scannable response sheets were received for 193,817 kindergarten students. This represents 98% of the 197,416 kindergarten students in membership during the October 2007 FTE reporting period. In addition to the results of the screening, teachers provided a reason when a child could not be screened. The Department uses this information to track the status of as many children as possible. Screening is not valid or appropriate if:

- The child began school after the 30th day of school.
- The child was retained from the previous year.
- The child has limited English proficiency.
- The child has significant disabilities.
- Valid scores could not be determined because of coding or gridding problems.

2007-08 ECHOS RESULTS

For the kindergarten children with valid results on the ECHOS (180,351) teacher ratings indicated the following:

- ❑ 48 percent were considered “Consistently Demonstrating.”
- ❑ 40 percent were considered to be “Emerging/Progressing.”
- ❑ 12 percent were considered “Not Yet Demonstrating.”

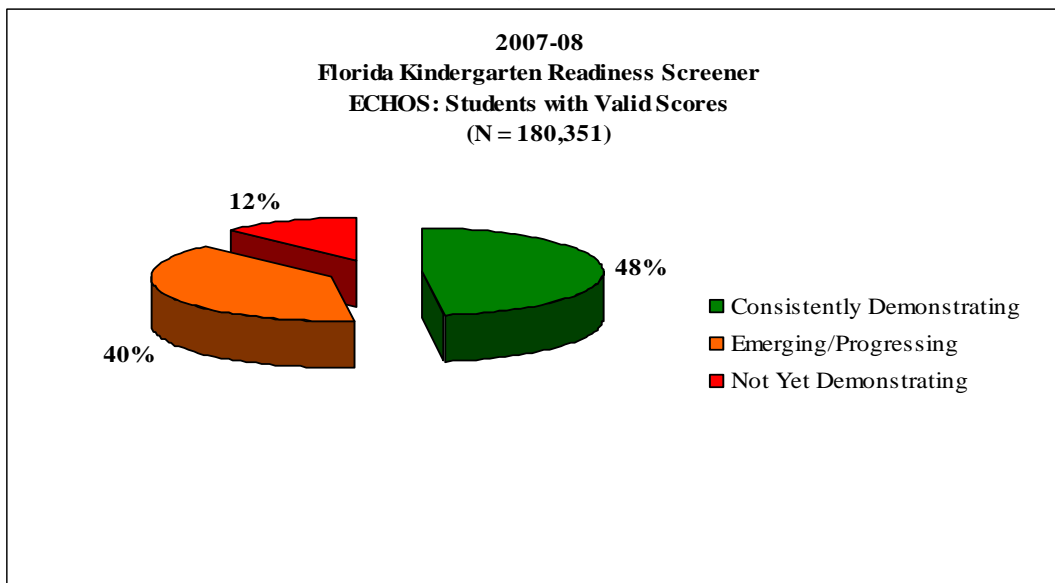
To be considered “Ready for Kindergarten,” children should be scoring at the **Consistently Demonstrating** or **Emerging/Progressing** levels.

These findings are important for establishing baseline information about students upon their entry into kindergarten. Figures 1 and 2 provide these results.

Figure 1

| Summary of ECHOS Status | | | | |
|-----------------------------------|-------------|--------|-------------|--------|
| | 2006 | | 2007 | |
| Total Scored | 184,124 | | 180,351 | |
| Consistently Demonstrating | 78,006 | 42.37% | 86,607 | 48.02% |
| Emerging/Progressing | 80,234 | 43.58% | 71,650 | 39.73% |
| Not Yet Demonstrating | 25,884 | 14.06% | 22,094 | 12.25% |

Figure 2



2007-08 ECHOS RESULTS (CONT.)

Attachments 1 and 2 compare the 2006-07 to 2007-08 ECHOS results. On ECHOS, there were increases ranging from two to 13 percent in the percentage of children entering kindergarten “Ready to Learn” in 52 percent of the districts (35/67 school districts).

2007-08 DIBELS RESULTS

For the kindergarten children with valid results on the DIBELS Letter Naming Fluency (177,996), the following scores were attained.

Letter Naming Fluency

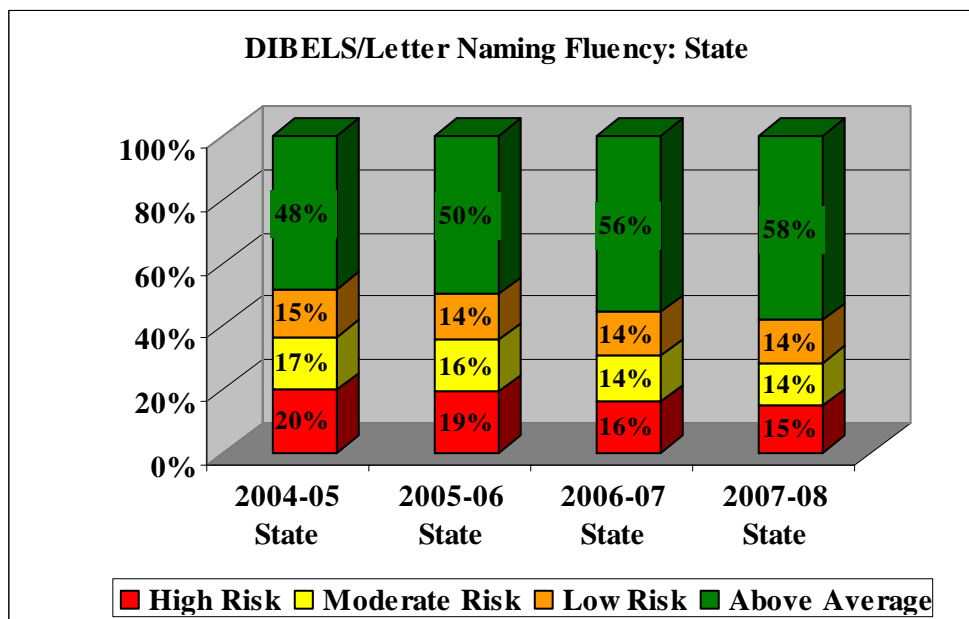
- ❑ 58% were considered “Above Average.”
- ❑ 14% were considered “Low Risk.”
- ❑ 14% were considered “Moderate Risk.”
- ❑ 15% were considered “High Risk.”

Figures 3 and 4 provide a summary of the DIBELS Letter Naming Fluency results for the past three years.

Figure 3

| Letter Naming Fluency Status Summary | | | | | | | | |
|--------------------------------------|---------|--------|---------|--------|---------|--------|---------|--------|
| | 2004 | | 2005 | | 2006 | | 2007 | |
| Total Participants | 175,023 | | 178,953 | | 182,278 | | 177,996 | |
| Above Average | 84,550 | 48.31% | 89,229 | 49.86% | 101,400 | 55.63% | 103,578 | 58.19% |
| Low Risk | 26,550 | 15.17% | 25,930 | 14.49% | 25,461 | 13.97% | 24,073 | 13.52% |
| Moderate Risk | 29,359 | 16.77% | 29,150 | 16.29% | 26,347 | 14.45% | 24,339 | 13.67% |
| High Risk | 34,564 | 19.75% | 34,644 | 19.36% | 29,070 | 15.95% | 26,006 | 14.61% |

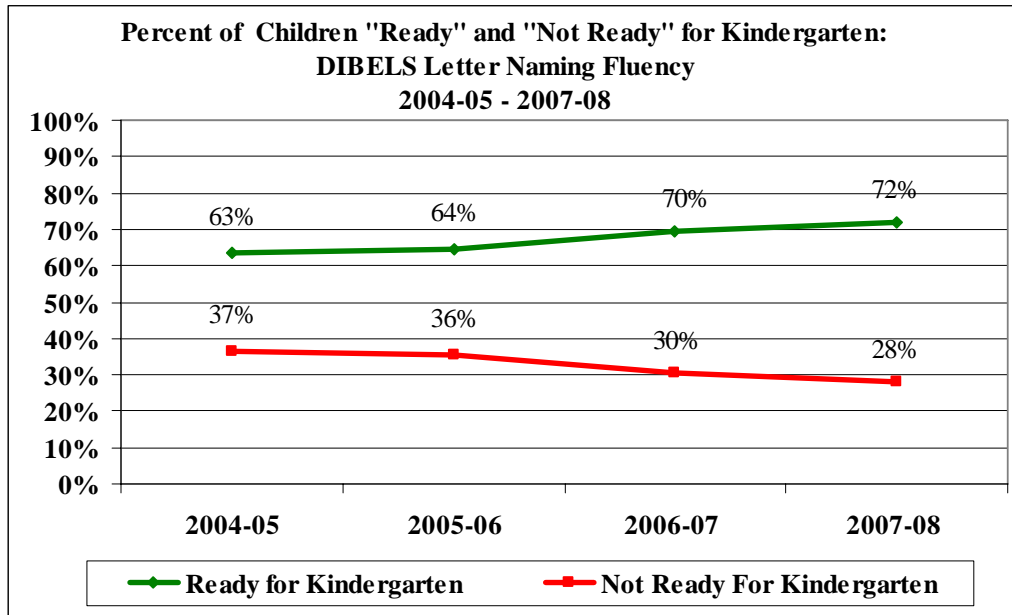
Figure 4



2007-08 DIBELS RESULTS (CONT.)

To be considered “Ready for Kindergarten,” children should be scoring at the **Above Average or Low Risk** levels. Figure 5 displays the percentage of children “Ready” and “Not Ready” for Kindergarten as measured by the DIBELS Letter Naming Fluency results.

Figure 5



For the kindergarten children with valid results on the DIBELS Initial Sound Fluency (173,214), the following scores were attained.

Initial Sound Fluency

- ❑ 45% were considered “Above Average.”
- ❑ 19% were considered “Low Risk.”
- ❑ 19% were considered “Moderate Risk.”
- ❑ 17% were considered “High Risk.”

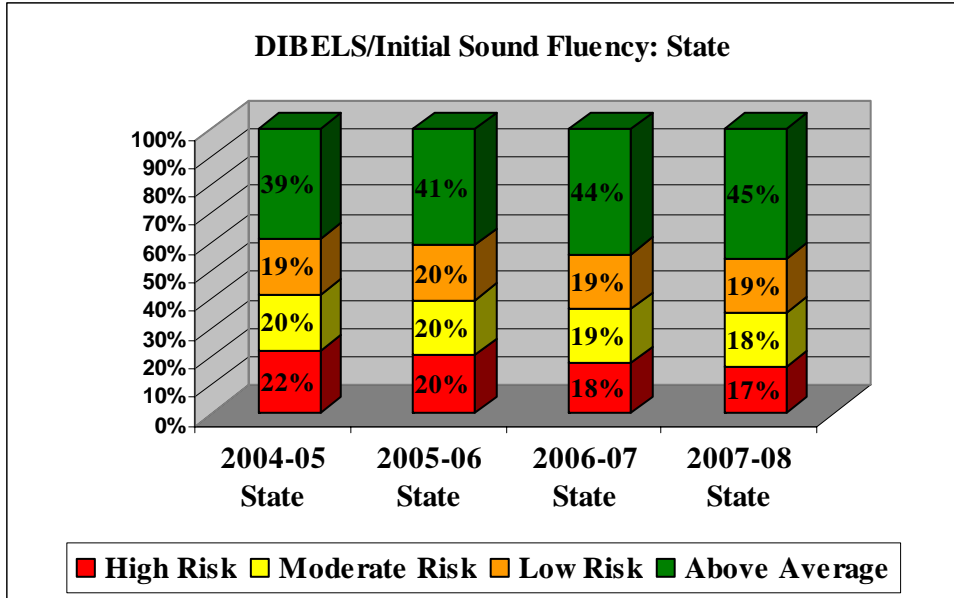
Figures 6 and 7 provide a summary of the DIBELS Initial Sound Fluency results for the past three years.

Figure 6

| Initial Sound Status Summary | | | | | | | | |
|------------------------------|---------|--------|---------|--------|---------|--------|---------|--------|
| | 2004 | | 2005 | | 2006 | | 2007 | |
| Total Participants | 174,913 | | 172,901 | | 176,957 | | 173,214 | |
| Above Average | 68,297 | 39.05% | 70,167 | 40.58% | 77,961 | 44.06% | 78,785 | 45.48% |
| Low Risk | 33,564 | 19.19% | 33,836 | 19.57% | 34,289 | 19.38% | 33,536 | 19.36% |
| Moderate Risk | 34,992 | 20.01% | 33,815 | 19.56% | 33,103 | 18.71% | 31,927 | 18.43% |
| High Risk | 38,060 | 21.76% | 35,083 | 20.29% | 31,604 | 17.86% | 28,966 | 16.72% |

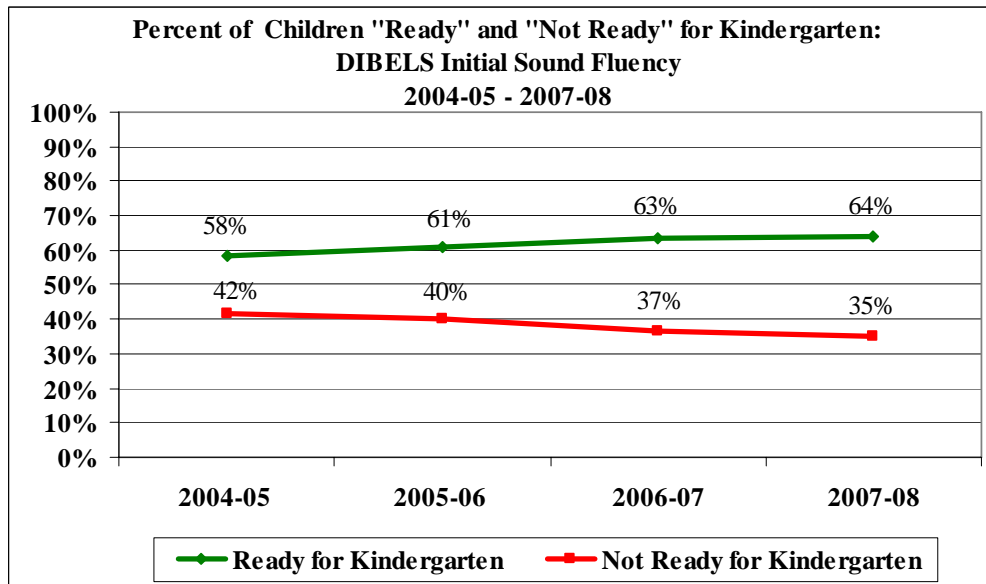
2007-08 DIBELS RESULTS (CONT.)

Figure 7



To be considered “Ready for Kindergarten,” children should be scoring at the **Above Average or Low Risk** levels. Figure 8 displays the percentage of children “Ready” and “Not Ready” for Kindergarten as measured by the DIBELS Initial Sound Fluency results.

Figure 8



District School Superintendents
December 11, 2007
Page Seven

Attachments 3, 4, 5, and 6 compare the 2006-07 to 2007-08 DIBELS results. On LNF, there were increases ranging from two to 13 percent in the percentage of children entering kindergarten "Ready to Learn" in 61 percent of the districts (41/67 school districts). On ISF, there were increases of two to 20 percent in 49 percent of the districts (33/67).

DISTRICT REPORT OF SCHOOL RESULTS

School districts have received copies of the *District Report of School Results* directly from the Department of Education's contractor. These data may be used in the development of local School Improvement Plans and for related student achievement initiatives.

Copies of the *District Report of School Results* will also be provided to the Florida Center for Reading Research, the *Just Read, Florida!* Office, the chairpersons and executive directors of the local Early Learning Coalitions, and the Office of Early Learning, Agency for Workforce Innovation. The Department of Education will be using these data for additional analysis.

If you have additional questions regarding the Florida Kindergarten Readiness Screener, please contact Shan Goff at 850/245-0445 or via email at shan.goff@fldoe.org or Jackie Muller at 850/245-0775 or via email at jackie.mueller@fldoe.org.

We appreciate your support, collaboration, and ongoing commitment to young children and their families.

EJS/sgg

Attachments (6)

cc: Assistant Superintendents for Curriculum and Instruction
District Coordinators of Assessment
Chairpersons, Early Learning Coalitions
Executive Directors, Early Learning Coalitions
Monesia Brown, Director, Agency for Workforce Innovation

Early Childhood Observation System (ECHOS)

The total ECHOS score is based on the teacher's observation of the child's performance on a maximum of 19 benchmarks across 7 developmental areas. For some students, the total ECHOS score may be based on fewer than 19 benchmarks, with at least 14 benchmarks required for a score to be calculated. If there are fewer than 14 benchmarks, the status is Not Scorable (NS).

Item Scoring Table

| Score | Status |
|----------|---------------------------------|
| 0 Points | Not Yet Demonstrating (ND) |
| 1 Point | Emerging/Progressing (EP) |
| 2 Points | Consistently Demonstrating (CD) |

Status Totals by Number of Benchmarks Observed

| | 19 | 18 | 17 | 16 | 15 | 14 | <14 |
|----|-------|-------|-------|-------|-------|-------|-----|
| ND | <14 | <14 | <13 | <12- | <11 | <11 | NS |
| EP | 14-28 | 14-27 | 13-25 | 12-24 | 11-22 | 11-21 | NS |
| CD | 29-38 | 28-36 | 26-34 | 25-32 | 23-30 | 22-28 | NS |

Dynamic Indicators of Basic Early Literacy Skills (DIBELS)

Letter Naming Fluency

Letter Naming Fluency measures a child's proficiency in naming uppercase and lowercase letters. Children are presented with a page containing letters in random order and are asked to name as many letters as possible within one minute.

Letter Naming Fluency Scoring Table

| Number Correct per Minute | Status | Description |
|---------------------------|--------------------|---|
| 0-1 | High Risk (HR) | Seriously below grade level and in need of substantial intervention |
| 2-7 | Moderate Risk (MR) | Moderately below grade level and in need of additional intervention |
| 8-16 | Low Risk (LR) | At grade level |
| 17+ | Above Average (AA) | At or above the 60th percentile |

Initial Sound Fluency

Initial Sound Fluency determines a child's ability to recognize the beginning sound(s) in an orally presented word. Children are shown pictures of objects and asked to identify the picture that begins with the sound the examiner presents. Children are also asked to produce the beginning sound for an orally presented word that matches one of the pictures.

Initial Sound Fluency Scoring Table

| Score | Status | Description |
|-------|--------------------|---|
| 0-3 | High Risk (HR) | Seriously below grade level and in need of substantial intervention |
| 4-7 | Moderate Risk (MR) | Moderately below grade level and in need of additional intervention |
| 8-11 | Low Risk (LR) | At grade level |
| 12+ | Above Average (AA) | At or above the 60th percentile |



Florida Kindergarten Readiness Screener (FLKRS) District Report of School Results Fall 2007

District Name: BROWARD
District Number: 06

| School Name | School Number | ECHOS Status Results | | | DIBELS Status Results | | | | | |
|-------------------|---------------|----------------------|--------|---------|-------------------------------|--------|-----------------------|-------------------------------|--------|-----------------------|
| | | Number Reported | Status | Percent | Letter Naming Number Reported | Status | Letter Naming Percent | Initial Sound Number Reported | Status | Initial Sound Percent |
| DEERFIELD BEACH | 0011 | 105 | CD | 29 | 105 | AA | 62 | 101 | AA | 37 |
| | | | EP | 55 | | LR | 9 | | LR | 16 |
| | | | ND | 16 | | MR | 16 | | MR | 26 |
| | | | | | | HR | 13 | | HR | 22 |
| | | | | | | | | | | |
| OAKLAND PARK ELEM | 0031 | 98 | CD | 17 | 98 | AA | 43 | 97 | AA | 23 |
| | | | EP | 49 | | LR | 13 | | LR | 26 |
| | | | ND | 34 | | MR | 18 | | MR | 33 |
| | | | | | | HR | 26 | | HR | 19 |
| | | | | | | | | | | |
| NORTH SIDE ELEM | 0041 | 64 | CD | 27 | 63 | AA | 65 | 63 | AA | 44 |
| | | | EP | 44 | | LR | 11 | | LR | 13 |
| | | | ND | 30 | | MR | 11 | | MR | 27 |
| | | | | | | HR | 13 | | HR | 16 |
| | | | | | | | | | | |
| DANIA ELEMENTARY | 0101 | 71 | CD | 25 | 72 | AA | 60 | 72 | AA | 46 |
| | | | EP | 63 | | LR | 15 | | LR | 21 |
| | | | ND | 11 | | MR | 10 | | MR | 18 |
| | | | | | | HR | 15 | | HR | 15 |
| | | | | | | | | | | |

** No data are reported when fewer than 10 students were screened or if a cell equals 0% or 100%.

Legend:

ECHOS Status:

- CD = Consistently Demonstrating
- EP = Emerging/Progressing
- ND = Not Yet Demonstrating

DIBELS Status:

- AA = Above Average
- LR = Low Risk
- MR = Moderate Risk
- HR = High Risk



Florida Kindergarten Readiness Screener (FLKRS) District Report of School Results Fall 2007

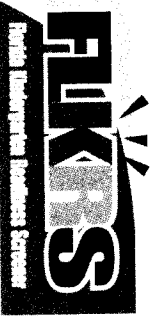
District Name: BROWARD
District Number: 06

| School Name | School Number | ECHOS Status Results | | | DIBELS Status Results | | | | | |
|----------------------|---------------|----------------------|--------|---------|-------------------------------|--------|-----------------------|-------------------------------|--------|-----------------------|
| | | Number Reported | Status | Percent | Letter Naming Number Reported | Status | Letter Naming Percent | Initial Sound Number Reported | Status | Initial Sound Percent |
| HOLLYWOOD HILLS ELEM | 0111 | 115 | CD | 48 | 111 | AA | 83 | 105 | AA | 86 |
| | | | EP | 46 | | LR | 6 | | LR | 6 |
| | | | ND | 6 | | MR | 7 | | MR | 8 |
| | | | | | | HR | 4 | | HR | 1 |
| HOLLYWOOD CENTRAL | 0121 | 109 | CD | 37 | 110 | AA | 70 | 109 | AA | 45 |
| | | | EP | 48 | | LR | 13 | | LR | 19 |
| | | | ND | 16 | | MR | 7 | | MR | 17 |
| | | | | | | HR | 10 | | HR | 18 |
| HALLANDALE ELEM | 0131 | 167 | CD | 42 | 169 | AA | 54 | 168 | AA | 44 |
| | | | EP | 34 | | LR | 11 | | LR | 14 |
| | | | ND | 24 | | MR | 14 | | MR | 9 |
| | | | | | | HR | 21 | | HR | 33 |
| RIVERLAND ELEMENTARY | 0151 | 73 | CD | 8 | 73 | AA | 64 | 58 | AA | 41 |
| | | | EP | 77 | | LR | 8 | | LR | 28 |
| | | | ND | 15 | | MR | 8 | | MR | 14 |
| | | | | | | HR | 19 | | HR | 17 |

** No data are reported when fewer than 10 students were screened or if a cell equals 0% or 100%.

Legend:
ECHOS Status:
CD = Consistently Demonstrating
EP = Emerging/Progressing
ND = Not Yet Demonstrating

DIBELS Status:
AA = Above Average
LR = Low Risk
MR = Moderate Risk
HR = High Risk



Florida Kindergarten Readiness Screener (FLKRS) District Report of School Results Fall 2007

District Name: BROWARD
District Number: 06

| School Name | School Number | ECHOS Status Results | | | DIBELS Status Results | | | | | |
|---------------------|---------------|----------------------|--------|---------|-------------------------------|--------|-----------------------|-------------------------------|--------|-----------------------|
| | | Number Reported | Status | Percent | Letter Naming Number Reported | Status | Letter Naming Percent | Initial Sound Number Reported | Status | Initial Sound Percent |
| WEST HOLLYWOOD ELEM | 0161 | 105 | CD | 23 | 105 | AA | 54 | 102 | AA | 32 |
| | | | EP | 65 | | LR | 17 | | LR | 26 |
| | | | ND | 12 | | MR | 11 | | MR | 22 |
| | | | | | | HR | 17 | | HR | 20 |
| | | | | | | | | | | |
| WILTON MANORS ELEM | 0191 | 96 | CD | 47 | 78 | AA | 77 | 77 | AA | 57 |
| | | | EP | 42 | | LR | 6 | | LR | 13 |
| | | | ND | 11 | | MR | 8 | | MR | 17 |
| | | | | | | HR | 9 | | HR | 13 |
| | | | | | | | | | | |
| BENNETT ELEMENTARY | 0204 | 71 | CD | 37 | 71 | AA | 59 | 65 | AA | 48 |
| | | | EP | 41 | | LR | 18 | | LR | 18 |
| | | | ND | 23 | | MR | 10 | | MR | 15 |
| | | | | | | HR | 13 | | HR | 18 |
| | | | | | | | | | | |
| CROISSANT PARK ELEM | 0221 | 111 | CD | 51 | 109 | AA | 41 | 108 | AA | 41 |
| | | | EP | 39 | | LR | 26 | | LR | 21 |
| | | | ND | 10 | | MR | 14 | | MR | 18 |
| | | | | | | HR | 19 | | HR | 20 |

** No data are reported when fewer than 10 students were screened or if a cell equals 0% or 100%.

Legend:
ECHOS Status:
CD = Consistently Demonstrating
EP = Emerging/Progressing
ND = Not Yet Demonstrating

DIBELS Status:
AA = Above Average
LR = Low Risk
MR = Moderate Risk
HR = High Risk



Florida Kindergarten Readiness Screener (FLKRS) District Report of School Results Fall 2007

District Name: BROWARD
District Number: 06

| School Name | School Number | ECHOS Status Results | | | DIBELS Status Results | | | | | |
|---------------------|---------------|----------------------|--------|---------|-------------------------------|--------|-----------------------|-------------------------------|--------|-----------------------|
| | | Number Reported | Status | Percent | Letter Naming Number Reported | Status | Letter Naming Percent | Initial Sound Number Reported | Status | Initial Sound Percent |
| COLBERT ELEMENTARY | 0231 | 84 | CD | 76 | 84 | AA | 60 | 83 | AA | 35 |
| | | | EP | 17 | | LR | 12 | | LR | 16 |
| | | | ND | 7 | | MR | 8 | | MR | 22 |
| | | | | | | HR | 20 | | HR | 28 |
| DILLARD ELEMENTARY | 0271 | 122 | CD | 22 | 121 | AA | 63 | 120 | AA | 43 |
| | | | EP | 63 | | LR | 10 | | LR | 25 |
| | | | ND | 15 | | MR | 13 | | MR | 20 |
| | | | | | | HR | 14 | | HR | 12 |
| WALKER (MAGNET)ELEM | 0321 | 81 | CD | 25 | 0 | AA | ** | 0 | AA | ** |
| | | | EP | 63 | | LR | ** | | LR | ** |
| | | | ND | 12 | | MR | ** | | MR | ** |
| | | | | | | HR | ** | | HR | ** |
| COLLINS ELEMENTARY | 0331 | 54 | CD | ** | 54 | AA | 57 | 54 | AA | 57 |
| | | | EP | ** | | LR | 13 | | LR | 13 |
| | | | ND | ** | | MR | 17 | | MR | 15 |
| | | | | | | HR | 13 | | HR | 15 |

** No data are reported when fewer than 10 students were screened or if a cell equals 0% or 100%.

Legend:
ECHOS Status:
CD = Consistently Demonstrating
EP = Emerging/Progressing
ND = Not Yet Demonstrating

DIBELS Status:
AA = Above Average
LR = Low Risk
MR = Moderate Risk
HR = High Risk



Florida Kindergarten Readiness Screener (FLKRS) District Report of School Results Fall 2007

District Name: BROWARD
District Number: 06

| School Name | School Number | ECHOS Status Results | | | DIBELS Status Results | | | | | |
|---------------------|---------------|----------------------|--------|---------|-------------------------------|--------|-----------------------|-------------------------------|--------|-----------------------|
| | | Number Reported | Status | Percent | Letter Naming Number Reported | Status | Letter Naming Percent | Initial Sound Number Reported | Status | Initial Sound Percent |
| BETHUNE MARY | 0341 | 100 | CD | 26 | 100 | AA | 67 | 99 | AA | 37 |
| | | | EP | 61 | | LR | 8 | | LR | 20 |
| | | | ND | 13 | | MR | 13 | | MR | 25 |
| | | | | | | HR | 12 | | HR | 17 |
| DEERFIELD PARK | 0391 | 110 | CD | 20 | 108 | AA | 61 | 108 | AA | 42 |
| | | | EP | 61 | | LR | 11 | | LR | 29 |
| | | | ND | 19 | | MR | 18 | | MR | 16 |
| | | | | | | HR | 10 | | HR | 14 |
| LAUDERDALE MANORS | 0431 | 87 | | | 96 | | | 96 | | |
| | | | CD | 36 | | AA | 56 | | AA | 45 |
| | | | EP | 54 | | LR | 15 | | LR | 23 |
| | | | ND | 10 | | MR | 13 | | MR | 19 |
| OAKRIDGE ELEMENTARY | 0461 | 95 | | | 95 | | | 95 | | |
| | | | CD | 41 | | AA | 56 | | AA | 43 |
| | | | EP | 47 | | LR | 11 | | LR | 16 |
| | | | ND | 12 | | MR | 18 | | MR | 26 |
| | | | | | HR | 16 | | HR | 15 | |

Legend:
ECHOS Status:
 CD = Consistently Demonstrating
 EP = Emerging/Progressing
 ND = Not Yet Demonstrating
DIBELS Status:
 AA = Above Average
 LR = Low Risk
 MR = Moderate Risk
 HR = High Risk

** No data are reported when fewer than 10 students were screened or if a cell equals 0% or 100%.



**Florida Kindergarten Readiness Screener (FLKRS)
District Report of School Results
Fall 2007**

District Name: BROWARD
District Number: 06

| School Name | School Number | ECHOS Status Results | | | DIBELS Status Results | | | | | |
|--------------------|---------------|----------------------|--------|---------|-------------------------------|--------|-----------------------|-------------------------------|--------|-----------------------|
| | | Number Reported | Status | Percent | Letter Naming Number Reported | Status | Letter Naming Percent | Initial Sound Number Reported | Status | Initial Sound Percent |
| HARBORDALE ELEM | 0491 | 51 | CD | 63 | 51 | AA | 73 | 51 | AA | 49 |
| | | | EP | 31 | | LR | 10 | | LR | 14 |
| | | | ND | 6 | | MR | 8 | | MR | 14 |
| | | | | | | HR | 10 | | HR | 24 |
| BROWARD ESTATES | 0501 | 83 | CD | 13 | 83 | AA | 67 | 83 | AA | 41 |
| | | | EP | 65 | | LR | 12 | | LR | 18 |
| | | | ND | 22 | | MR | 8 | | MR | 20 |
| | | | | | | HR | 12 | | HR | 20 |
| WATKINS ELEMENTARY | 0511 | 109 | CD | 71 | 0 | AA | ** | 0 | AA | ** |
| | | | EP | 23 | | LR | ** | | LR | ** |
| | | | ND | 6 | | MR | ** | | MR | ** |
| | | | | | | HR | ** | | HR | ** |
| N ANDREWS GARDENS | 0521 | 117 | CD | 29 | 119 | AA | 65 | 112 | AA | 53 |
| | | | EP | 52 | | LR | 13 | | LR | 21 |
| | | | ND | 19 | | MR | 6 | | MR | 16 |
| | | | | | | HR | 16 | | HR | 11 |

** No data are reported when fewer than 10 students were screened or if a cell equals 0% or 100%.

Legend:
ECHOS Status:
 CD = Consistently Demonstrating
 EP = Emerging/Progressing
 ND = Not Yet Demonstrating
DIBELS Status:
 AA = Above Average
 LR = Low Risk
 MR = Moderate Risk
 HR = High Risk



Florida Kindergarten Readiness Screener (FLKRS) District Report of School Results Fall 2007

District Name: BROWARD
District Number: 06

| School Name | School Number | ECHOS Status Results | | | DIBELS Status Results | | | | | |
|---------------------|---------------|----------------------|--------|---------|-------------------------------|--------|-----------------------|-------------------------------|--------|-----------------------|
| | | Number Reported | Status | Percent | Letter Naming Number Reported | Status | Letter Naming Percent | Initial Sound Number Reported | Status | Initial Sound Percent |
| MIRAMAR | 0531 | 155 | CD | 21 | 156 | AA | 64 | 143 | AA | 39 |
| | | | EP | 52 | | LR | 10 | | LR | 24 |
| | | | ND | 27 | | MR | 12 | | MR | 22 |
| | | | | | | HR | 14 | | HR | 15 |
| NORCREST ELEMENTARY | 0561 | 115 | CD | 47 | 116 | AA | 59 | 109 | AA | 47 |
| | | | EP | 38 | | LR | 15 | | LR | 22 |
| | | | ND | 15 | | MR | 6 | | MR | 18 |
| | | | | | | HR | 20 | | HR | 13 |
| TEDDER ELEMENTARY | 0574 | 112 | CD | 1 | 112 | AA | 35 | 112 | AA | 16 |
| | | | EP | 79 | | LR | 22 | | LR | 15 |
| | | | ND | 20 | | MR | 17 | | MR | 27 |
| | | | | | | HR | 26 | | HR | 42 |
| SUNLAND PARK ELEM | 0611 | 65 | CD | 9 | 67 | AA | 39 | 67 | AA | 31 |
| | | | EP | 75 | | LR | 10 | | LR | 19 |
| | | | ND | 15 | | MR | 21 | | MR | 19 |
| | | | | | | HR | 30 | | HR | 30 |

** No data are reported when fewer than 10 students were screened or if a cell equals 0% or 100%.

Legend:
ECHOS Status:

CD = Consistently Demonstrating
EP = Emerging/Progressing
ND = Not Yet Demonstrating

DIBELS Status:

AA = Above Average
LR = Low Risk
MR = Moderate Risk
HR = High Risk



Florida Kindergarten Readiness Screener (FLKRS) District Report of School Results Fall 2007

District Name: BROWARD
District Number: 06

| School Name | School Number | ECHOS Status Results | | | DIBELS Status Results | | | | | |
|---------------------|---------------|----------------------|--------|---------|-------------------------------|--------|-----------------------|-------------------------------|--------|-----------------------|
| | | Number Reported | Status | Percent | Letter Naming Number Reported | Status | Letter Naming Percent | Initial Sound Number Reported | Status | Initial Sound Percent |
| LARKDALE ELEMENTARY | 0621 | 59 | CD | 39 | 60 | AA | 55 | 60 | AA | 33 |
| | | | EP | 24 | | LR | 15 | | LR | 27 |
| | | | ND | 37 | | MR | 13 | | MR | 23 |
| | | | | | | HR | 17 | | HR | 17 |
| | | | | | | | | | | |
| WESTWOOD HEIGHTS | 0631 | 97 | CD | 39 | 96 | AA | 66 | 88 | AA | 38 |
| | | | EP | 49 | | LR | 11 | | LR | 23 |
| | | | ND | 11 | | MR | 13 | | MR | 32 |
| | | | | | | HR | 10 | | HR | 8 |
| | | | | | | | | | | |
| BAYVIEW ELEMENTARY | 0641 | 68 | CD | 49 | 69 | AA | 88 | 69 | AA | 58 |
| | | | EP | 47 | | LR | 4 | | LR | 25 |
| | | | ND | 4 | | MR | 1 | | MR | 10 |
| | | | | | | HR | 6 | | HR | 7 |
| | | | | | | | | | | |
| STIRLING ELEMENTARY | 0691 | 95 | CD | 55 | 95 | AA | 72 | 95 | AA | 44 |
| | | | EP | 31 | | LR | 11 | | LR | 21 |
| | | | ND | 15 | | MR | 8 | | MR | 16 |
| | | | | | | HR | 9 | | HR | 19 |
| | | | | | | | | | | |

** No data are reported when fewer than 10 students were screened or if a cell equals 0% or 100%.

Legend:
ECHOS Status:

- CD = Consistently Demonstrating
- EP = Emerging/Progressing
- ND = Not Yet Demonstrating
- AA = Above Average
- LR = Low Risk
- MR = Moderate Risk
- HR = High Risk

DIBELS Status:



Florida Kindergarten Readiness Screener (FLKRS) District Report of School Results Fall 2007

District Name: BROWARD
District Number: 06

| School Name | School Number | ECHOS Status Results | | | DIBELS Status Results | | | | | |
|----------------------|---------------|----------------------|--------|---------|-------------------------------|--------|-----------------------|-------------------------------|--------|-----------------------|
| | | Number Reported | Status | Percent | Letter Naming Number Reported | Status | Letter Naming Percent | Initial Sound Number Reported | Status | Initial Sound Percent |
| ORANGE BROOK ELEM | 0711 | 113 | CD | 19 | 107 | AA | 63 | 103 | AA | 33 |
| | | | EP | 68 | | LR | 10 | | LR | 20 |
| | | | ND | 12 | | MR | 8 | | MR | 27 |
| | | | | | | HR | 19 | | HR | 19 |
| DRIFTWOOD ELEMENTARY | 0721 | 100 | CD | 16 | 100 | AA | 56 | 97 | AA | 41 |
| | | | EP | 72 | | LR | 13 | | LR | 25 |
| | | | ND | 12 | | MR | 19 | | MR | 23 |
| | | | | | | HR | 12 | | HR | 11 |
| TROPICAL ELEMENTARY | 0731 | 106 | CD | 48 | 106 | AA | 69 | 106 | AA | 52 |
| | | | EP | 36 | | LR | 14 | | LR | 15 |
| | | | ND | 16 | | MR | 10 | | MR | 18 |
| | | | | | | HR | 7 | | HR | 15 |
| POMPANO BEACH ELEM | 0751 | 89 | CD | 34 | 89 | AA | 71 | 88 | AA | 42 |
| | | | EP | 49 | | LR | 8 | | LR | 17 |
| | | | ND | 17 | | MR | 10 | | MR | 24 |
| | | | | | | HR | 11 | | HR | 17 |

Legend:

ECHOS Status:

CD = Consistently Demonstrating
EP = Emerging/Progressing
ND = Not Yet Demonstrating

DIBELS Status:

AA = Above Average
LR = Low Risk
MR = Moderate Risk
HR = High Risk

** No data are reported when fewer than 10 students were screened or if a cell equals 0% or 100%.



Florida Kindergarten Readiness Screener (FLKRS) District Report of School Results Fall 2007

District Name: BROWARD
District Number: 06

| School Name | School Number | ECHOS Status Results | | | DIBELS Status Results | | | | | |
|----------------------|---------------|----------------------|--------|---------|-------------------------------|--------|-----------------------|-------------------------------|--------|-----------------------|
| | | Number Reported | Status | Percent | Letter Naming Number Reported | Status | Letter Naming Percent | Initial Sound Number Reported | Status | Initial Sound Percent |
| MEADOWBROOK ELEM | 0761 | 86 | CD | 56 | 85 | AA | 56 | 77 | AA | 38 |
| | | | EP | 34 | | LR | 6 | | LR | 22 |
| | | | ND | 10 | | MR | 19 | | MR | 27 |
| | | | | | | HR | 19 | | HR | 13 |
| BROADVIEW ELEMENTARY | 0811 | 152 | CD | 5 | 153 | AA | 65 | 153 | AA | 37 |
| | | | EP | 89 | | LR | 13 | | LR | 27 |
| | | | ND | 5 | | MR | 10 | | MR | 24 |
| | | | | | | HR | 12 | | HR | 12 |
| LAKE FOREST ELEM | 0831 | 111 | CD | 41 | 115 | AA | 57 | 114 | AA | 23 |
| | | | EP | 44 | | LR | 10 | | LR | 21 |
| | | | ND | 15 | | MR | 17 | | MR | 22 |
| | | | | | | HR | 16 | | HR | 34 |
| MCNAB ELEMENTARY | 0841 | 130 | CD | 11 | 128 | AA | 63 | 128 | AA | 40 |
| | | | EP | 75 | | LR | 16 | | LR | 24 |
| | | | ND | 14 | | MR | 13 | | MR | 17 |
| | | | | | | HR | 8 | | HR | 19 |

** No data are reported when fewer than 10 students were screened or if a cell equals 0% or 100%.

Legend:

- ECHOS Status:**
 CD = Consistently Demonstrating
 EP = Emerging/Progressing
 ND = Not Yet Demonstrating
- DIBELS Status:**
 AA = Above Average
 LR = Low Risk
 MR = Moderate Risk
 HR = High Risk



Florida Kindergarten Readiness Screener (FLKRS) District Report of School Results Fall 2007

District Name: BROWARD
District Number: 06

| School Name | School Number | ECHOS Status Results | | | DIBELS Status Results | | | | | |
|-------------------|---------------|----------------------|--------|---------|-------------------------------|--------|-----------------------|-------------------------------|--------|-----------------------|
| | | Number Reported | Status | Percent | Letter Naming Number Reported | Status | Letter Naming Percent | Initial Sound Number Reported | Status | Initial Sound Percent |
| FLORANADA ELEM | 0851 | | CD | 3 | 102 | AA | 74 | 94 | AA | 54 |
| | | | EP | 85 | | LR | 9 | | LR | 19 |
| | | | ND | 12 | | MR | 6 | | MR | 16 |
| | | | | | | HR | 12 | | HR | 11 |
| | | | | | | | | | | |
| SANDERS PARK ELEM | 0891 | | CD | 42 | 82 | AA | 55 | 81 | AA | 36 |
| | | | EP | 55 | | LR | 17 | | LR | 23 |
| | | | ND | 2 | | MR | 7 | | MR | 27 |
| | | | | | | HR | 21 | | HR | 14 |
| | | | | | | | | | | |
| CRESTHAVEN ELEM | 0901 | | CD | 20 | 94 | AA | 50 | 93 | AA | 35 |
| | | | EP | 59 | | LR | 18 | | LR | 30 |
| | | | ND | 21 | | MR | 21 | | MR | 22 |
| | | | | | | HR | 11 | | HR | 13 |
| | | | | | | | | | | |
| STEPHEN FOSTER | 0921 | | CD | 47 | 89 | AA | 67 | 89 | AA | 40 |
| | | | EP | 52 | | LR | 16 | | LR | 21 |
| | | | ND | 1 | | MR | 10 | | MR | 27 |
| | | | | | | HR | 7 | | HR | 11 |
| | | | | | | | | | | |

** No data are reported when fewer than 10 students were screened or if a cell equals 0% or 100%.

Legend:
ECHOS Status:
 CD = Consistently Demonstrating
 EP = Emerging/Progressing
 ND = Not Yet Demonstrating
DIBELS Status:
 AA = Above Average
 LR = Low Risk
 MR = Moderate Risk
 HR = High Risk



Florida Kindergarten Readiness Screener (FLKRS) District Report of School Results Fall 2007

District Name: BROWARD
District Number: 06

| School Name | School Number | ECHOS Status Results | | | DIBELS Status Results | | | | | |
|-------------------|---------------|----------------------|--------|---------|-------------------------------|--------|-----------------------|-------------------------------|--------|-----------------------|
| | | Number Reported | Status | Percent | Letter Naming Number Reported | Status | Letter Naming Percent | Initial Sound Number Reported | Status | Initial Sound Percent |
| PETERS ELEMENTARY | 0931 | 103 | CD | ** | 102 | AA | 67 | 102 | AA | 43 |
| | | | EP | ** | | LR | 12 | | LR | 25 |
| | | | ND | ** | | MR | 12 | | MR | 14 |
| | | | | | | HR | 10 | | HR | 18 |
| | | | | | | | | | | |
| PLANTATION ELEM | 0941 | 87 | CD | 37 | 87 | AA | 59 | 87 | AA | 36 |
| | | | EP | 48 | | LR | 17 | | LR | 25 |
| | | | ND | 15 | | MR | 9 | | MR | 25 |
| | | | | | | HR | 15 | | HR | 14 |
| | | | | | | | | | | |
| BOULEVARD HEIGHTS | 0971 | 104 | CD | 11 | 104 | AA | 66 | 102 | AA | 20 |
| | | | EP | 82 | | LR | 17 | | LR | 21 |
| | | | ND | 8 | | MR | 14 | | MR | 25 |
| | | | | | | HR | 2 | | HR | 34 |
| | | | | | | | | | | |
| LOYD ESTATES | 1091 | 64 | CD | 11 | 63 | AA | 59 | 57 | AA | 40 |
| | | | EP | 59 | | LR | 13 | | LR | 26 |
| | | | ND | 30 | | MR | 11 | | MR | 25 |
| | | | | | | HR | 17 | | HR | 9 |
| | | | | | | | | | | |

** No data are reported when fewer than 10 students were screened or if a cell equals 0% or 100%.

Legend:
ECHOS Status:

CD = Consistently Demonstrating
EP = Emerging/Progressing
ND = Not Yet Demonstrating

DIBELS Status:

AA = Above Average
LR = Low Risk
MR = Moderate Risk
HR = High Risk



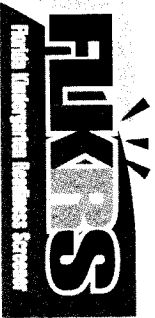
Florida Kindergarten Readiness Screener (FLKRS) District Report of School Results Fall 2007

District Name: BROWARD
District Number: 06

| School Name | School Number | ECHOS Status Results | | | DIBELS Status Results | | | | | |
|---------------------|---------------|----------------------|--------|---------|-------------------------------|--------|-----------------------|-------------------------------|--------|-----------------------|
| | | Number Reported | Status | Percent | Letter Naming Number Reported | Status | Letter Naming Percent | Initial Sound Number Reported | Status | Initial Sound Percent |
| PALMVIEW ELEMENTARY | 1131 | | CD | 18 | 77 | AA | 56 | 76 | AA | 29 |
| | | | EP | 64 | | LR | 12 | | LR | 28 |
| | | | ND | 18 | | MR | 14 | | MR | 25 |
| | | | | | | HR | 18 | | HR | 18 |
| MARGATE ELEMENTARY | 1161 | | CD | 38 | 144 | AA | 74 | 144 | AA | 62 |
| | | | EP | 58 | | LR | 7 | | LR | 16 |
| | | | ND | 4 | | MR | 10 | | MR | 15 |
| | | | | | | HR | 10 | | HR | 8 |
| SUNSHINE ELEMENTARY | 1171 | | CD | 29 | 132 | AA | 71 | 125 | AA | 54 |
| | | | EP | 39 | | LR | 11 | | LR | 16 |
| | | | ND | 32 | | MR | 11 | | MR | 16 |
| | | | | | | HR | 7 | | HR | 14 |
| NORTH FORK ELEM | 1191 | | CD | 39 | 86 | AA | 57 | 82 | AA | 43 |
| | | | EP | 58 | | LR | 14 | | LR | 20 |
| | | | ND | 4 | | MR | 9 | | MR | 20 |
| | | | | | | HR | 20 | | HR | 18 |

** No data are reported when fewer than 10 students were screened or if a cell equals 0% or 100%.

- Legend:**
- ECHOS Status:**
 CD = Consistently Demonstrating
 EP = Emerging/Progressing
 ND = Not Yet Demonstrating
- DIBELS Status:**
 AA = Above Average
 LR = Low Risk
 MR = Moderate Risk
 HR = High Risk



Florida Kindergarten Readiness Screener (FLKRS) District Report of School Results Fall 2007

District Name: BROWARD
District Number: 06

| School Name | School Number | ECHOS Status Results | | | DIBELS Status Results | | | | | |
|----------------------|---------------|----------------------|--------|---------|-------------------------------|--------|-----------------------|-------------------------------|--------|-----------------------|
| | | Number Reported | Status | Percent | Letter Naming Number Reported | Status | Letter Naming Percent | Initial Sound Number Reported | Status | Initial Sound Percent |
| COOPER CITY ELEM | 1211 | 119 | CD | 78 | 118 | AA | 72 | 117 | AA | 60 |
| | | | EP | 15 | | LR | 10 | | LR | 18 |
| | | | ND | 7 | | MR | 11 | | MR | 15 |
| | | | | | | HR | 7 | | HR | 7 |
| PEMBROKE PINES ELEM | 1221 | 85 | CD | 26 | 85 | AA | 68 | 83 | AA | 43 |
| | | | EP | 67 | | LR | 12 | | LR | 17 |
| | | | ND | 7 | | MR | 13 | | MR | 16 |
| | | | | | | HR | 7 | | HR | 24 |
| PLANTATION PARK ELEM | 1251 | 64 | CD | 50 | 64 | AA | 81 | 64 | AA | 69 |
| | | | EP | 42 | | LR | 9 | | LR | 14 |
| | | | ND | 8 | | MR | 6 | | MR | 9 |
| | | | | | | HR | 3 | | HR | 8 |
| NOVA DWIGHT D EISENH | 1271 | 128 | CD | 49 | 128 | AA | 79 | 127 | AA | 63 |
| | | | EP | 48 | | LR | 9 | | LR | 21 |
| | | | ND | 3 | | MR | 5 | | MR | 10 |
| | | | | | | HR | 7 | | HR | 6 |

** No data are reported when fewer than 10 students were screened or if a cell equals 0% or 100%.

Legend:
ECHOS Status:
CD = Consistently Demonstrating
EP = Emerging/Progressing
ND = Not Yet Demonstrating

DIBELS Status:
AA = Above Average
LR = Low Risk
MR = Moderate Risk
HR = High Risk



Florida Kindergarten Readiness Screener (FLKRS) District Report of School Results Fall 2007

District Name: BROWARD
District Number: 06

| School Name | School Number | ECHOS Status Results | | | DIBELS Status Results | | | | | |
|----------------------|---------------|----------------------|--------|---------|-------------------------------|--------|-----------------------|-------------------------------|--------|-----------------------|
| | | Number Reported | Status | Percent | Letter Naming Number Reported | Status | Letter Naming Percent | Initial Sound Number Reported | Status | Initial Sound Percent |
| NOVA BLANCHE FORMAN | 1282 | 117 | CD | 76 | 117 | AA | 70 | 117 | AA | 59 |
| | | | EP | 15 | | LR | 13 | | LR | 17 |
| | | | ND | 9 | | MR | 13 | | MR | 17 |
| | | | | | | HR | 4 | | HR | 7 |
| SHERIDAN PARK ELEM | 1321 | 115 | CD | 77 | 115 | AA | 63 | 115 | AA | 45 |
| | | | EP | 22 | | LR | 14 | | LR | 25 |
| | | | ND | 1 | | MR | 14 | | MR | 23 |
| | | | | | | HR | 10 | | HR | 7 |
| LAUDERHILL PAUL TURN | 1381 | 105 | CD | 15 | 98 | AA | 72 | 98 | AA | 30 |
| | | | EP | 50 | | LR | 11 | | LR | 26 |
| | | | ND | 35 | | MR | 7 | | MR | 33 |
| | | | | | | HR | 9 | | HR | 12 |
| COCONUT CREEK ELEM | 1421 | 141 | CD | 67 | 139 | AA | 78 | 138 | AA | 38 |
| | | | EP | 26 | | LR | 10 | | LR | 28 |
| | | | ND | 7 | | MR | 9 | | MR | 16 |
| | | | | | | HR | 3 | | HR | 18 |

** No data are reported when fewer than 10 students were screened or if a cell equals 0% or 100%.

Legend:
ECHOS Status:

CD = Consistently Demonstrating
EP = Emerging/Progressing
ND = Not Yet Demonstrating

DIBELS Status:

AA = Above Average
LR = Low Risk
MR = Moderate Risk
HR = High Risk



Florida Kindergarten Readiness Screener (FLKRS) District Report of School Results Fall 2007

District Name: BROWARD
District Number: 06

| School Name | School Number | ECHOS Status Results | | | DIBELS Status Results | | | | | |
|--------------------|---------------|----------------------|--------|---------|-------------------------------|--------|-----------------------|-------------------------------|--------|-----------------------|
| | | Number Reported | Status | Percent | Letter Naming Number Reported | Status | Letter Naming Percent | Initial Sound Number Reported | Status | Initial Sound Percent |
| CASTLE HILL ELEM | 1461 | 108 | CD | 38 | 108 | AA | 55 | 95 | AA | 48 |
| | | | EP | 53 | | LR | 15 | | LR | 17 |
| | | | ND | 9 | | MR | 11 | | MR | 26 |
| | | | | | | HR | 19 | | HR | 8 |
| | | | | | | | | | | |
| MARTIN LUTHER KING | 1611 | 61 | CD | 15 | 56 | AA | 64 | 54 | AA | 28 |
| | | | EP | 67 | | LR | 14 | | LR | 20 |
| | | | ND | 18 | | MR | 7 | | MR | 28 |
| | | | | | | HR | 14 | | HR | 24 |
| | | | | | | | | | | |
| VILLAGE ELEMENTARY | 1621 | 137 | CD | 15 | 136 | AA | 57 | 132 | AA | 45 |
| | | | EP | 61 | | LR | 18 | | LR | 14 |
| | | | ND | 25 | | MR | 15 | | MR | 20 |
| | | | | | | HR | 10 | | HR | 21 |
| | | | | | | | | | | |
| ANNABEL C PERRY | 1631 | 104 | CD | 13 | 104 | AA | 66 | 104 | AA | 54 |
| | | | EP | 62 | | LR | 13 | | LR | 13 |
| | | | ND | 26 | | MR | 11 | | MR | 17 |
| | | | | | | HR | 11 | | HR | 15 |
| | | | | | | | | | | |

** No data are reported when fewer than 10 students were screened or if a cell equals 0% or 100%.

Legend:
ECHOS Status:

- CD = Consistently Demonstrating
- EP = Emerging/Progressing
- ND = Not Yet Demonstrating
- AA = Above Average
- LR = Low Risk
- MR = Moderate Risk
- HR = High Risk

DIBELS Status:



Florida Kindergarten Readiness Screener (FLKRS) District Report of School Results Fall 2007

District Name: BROWARD
District Number: 06

| School Name | School Number | ECHOS Status Results | | | DIBELS Status Results | | | | | |
|---------------------|---------------|----------------------|--------|---------|-------------------------------|--------|-----------------------|-------------------------------|--------|-----------------------|
| | | Number Reported | Status | Percent | Letter Naming Number Reported | Status | Letter Naming Percent | Initial Sound Number Reported | Status | Initial Sound Percent |
| FAIRWAY ELEMENTARY | 1641 | 117 | CD | 15 | 121 | AA | 74 | 117 | AA | 44 |
| | | | EP | 62 | | LR | 7 | | LR | 20 |
| | | | ND | 23 | | MR | 9 | | MR | 18 |
| | | | | | | HR | 10 | | HR | 19 |
| ROBERT C MARKHAM | 1671 | 74 | CD | 14 | 74 | AA | 57 | 71 | AA | 52 |
| | | | EP | 73 | | LR | 11 | | LR | 17 |
| | | | ND | 14 | | MR | 18 | | MR | 18 |
| | | | | | | HR | 15 | | HR | 13 |
| HOLLYWOOD PARK ELEM | 4761 | 67 | CD | 49 | 69 | AA | 48 | 69 | AA | 35 |
| | | | EP | 43 | | LR | 17 | | LR | 19 |
| | | | ND | 7 | | MR | 16 | | MR | 20 |
| | | | | | | HR | 19 | | HR | 26 |
| CYPRESS ELEMENTARY | 1781 | 143 | CD | 28 | 145 | AA | 52 | 144 | AA | 34 |
| | | | EP | 50 | | LR | 8 | | LR | 26 |
| | | | ND | 22 | | MR | 12 | | MR | 18 |
| | | | | | | HR | 28 | | HR | 22 |

Legend:

ECHOS Status:

CD = Consistently Demonstrating
EP = Emerging/Progressing
ND = Not Yet Demonstrating

DIBELS Status:

AA = Above Average
LR = Low Risk
MR = Moderate Risk
HR = High Risk

** No data are reported when fewer than 10 students were screened or if a cell equals 0% or 100%.



Florida Kindergarten Readiness Screener (FLKRS) District Report of School Results Fall 2007

District Name: BROWARD
District Number: 06

| School Name | School Number | ECHOS Status Results | | | DIBELS Status Results | | | | | |
|---------------------|---------------|----------------------|--------|---------|-------------------------------|--------|-----------------------|-------------------------------|--------|-----------------------|
| | | Number Reported | Status | Percent | Letter Naming Number Reported | Status | Letter Naming Percent | Initial Sound Number Reported | Status | Initial Sound Percent |
| SHERIDAN HILLS ELEM | 1814 | 75 | CD | 44 | 76 | AA | 74 | 76 | AA | 51 |
| | | | EP | 43 | | LR | 8 | | LR | 24 |
| | | | ND | 13 | | MR | 12 | | MR | 16 |
| | | | | | | HR | 7 | | HR | 9 |
| ORIOLE ELEMENTARY | 1831 | 111 | CD | 46 | 110 | AA | 62 | 107 | AA | 34 |
| | | | EP | 45 | | LR | 13 | | LR | 21 |
| | | | ND | 9 | | MR | 13 | | MR | 29 |
| | | | | | | HR | 13 | | HR | 17 |
| MIRROR LAKE ELEM | 1841 | 81 | CD | 69 | 81 | AA | 74 | 81 | AA | 51 |
| | | | EP | 30 | | LR | 16 | | LR | 12 |
| | | | ND | 1 | | MR | 5 | | MR | 22 |
| | | | | | | HR | 5 | | HR | 15 |
| ROYAL PALM ELEM | 1851 | 103 | CD | 20 | 101 | AA | 63 | 101 | AA | 36 |
| | | | EP | 58 | | LR | 8 | | LR | 21 |
| | | | ND | 21 | | MR | 13 | | MR | 28 |
| | | | | | | HR | 16 | | HR | 16 |

** No data are reported when fewer than 10 students were screened or if a cell equals 0% or 100%.

Legend:
ECHOS Status:
CD = Consistently Demonstrating
EP = Emerging/Progressing
ND = Not Yet Demonstrating

DIBELS Status:
AA = Above Average
LR = Low Risk
MR = Moderate Risk
HR = High Risk



Florida Kindergarten Readiness Screener (FLKRS) District Report of School Results Fall 2007

District Name: BROWARD
District Number: 06

| School Name | School Number | ECHOS Status Results | | | DIBELS Status Results | | | | | |
|-------------------|---------------|----------------------|--------|---------|-------------------------------|--------|-----------------------|-------------------------------|--------|-----------------------|
| | | Number Reported | Status | Percent | Letter Naming Number Reported | Status | Letter Naming Percent | Initial Sound Number Reported | Status | Initial Sound Percent |
| PARK RIDGE ELEM | 1951 | | CD | 28 | 0 | AA | ** | 0 | AA | ** |
| | | | EP | 30 | | LR | ** | | LR | ** |
| | | | ND | 42 | | MR | ** | | MR | ** |
| | | | | | | HR | ** | | HR | ** |
| | | | | | | | | | | |
| JAMES S HUNT ELEM | 1971 | | CD | 15 | 145 | AA | 27 | 140 | AA | 16 |
| | | | EP | 65 | | LR | 27 | | LR | 15 |
| | | | ND | 19 | | MR | 39 | | MR | 46 |
| | | | | | | HR | 7 | | HR | 24 |
| | | | | | | | | | | |
| BANYAN ELEMENTARY | 2001 | | CD | 50 | 129 | AA | 76 | 120 | AA | 48 |
| | | | EP | 46 | | LR | 12 | | LR | 18 |
| | | | ND | 4 | | MR | 6 | | MR | 27 |
| | | | | | | HR | 5 | | HR | 8 |
| | | | | | | | | | | |
| CORAL COVE ELEM | 2011 | | CD | 35 | 108 | AA | 64 | 107 | AA | 49 |
| | | | EP | 53 | | LR | 16 | | LR | 23 |
| | | | ND | 12 | | MR | 12 | | MR | 18 |
| | | | | | | HR | 8 | | HR | 10 |

Legend:
ECHOS Status:
 CD = Consistently Demonstrating
 EP = Emerging/Progressing
 ND = Not Yet Demonstrating
DIBELS Status:
 AA = Above Average
 LR = Low Risk
 MR = Moderate Risk
 HR = High Risk

** No data are reported when fewer than 10 students were screened or if a cell equals 0% or 100%.



Florida Kindergarten Readiness Screener (FLKRS) District Report of School Results Fall 2007

District Name: BROWARD
District Number: 06

| School Name | School Number | ECHOS Status Results | | | DIBELS Status Results | | | | | |
|----------------------|---------------|----------------------|--------|---------|-------------------------------|--------|-----------------------|-------------------------------|--------|-----------------------|
| | | Number Reported | Status | Percent | Letter Naming Number Reported | Status | Letter Naming Percent | Initial Sound Number Reported | Status | Initial Sound Percent |
| PASADENA LAKES ELEM | 2071 | 93 | CD | 35 | 92 | AA | 71 | 85 | AA | 41 |
| | | | EP | 54 | | LR | 8 | | LR | 27 |
| | | | ND | 11 | | MR | 10 | | MR | 12 |
| | | | | | | HR | 12 | | HR | 20 |
| NORTH LAUDERDALE ELE | 2231 | 121 | CD | 8 | 116 | AA | 49 | 114 | AA | 28 |
| | | | EP | 54 | | LR | 16 | | LR | 22 |
| | | | ND | 38 | | MR | 13 | | MR | 32 |
| | | | | | | HR | 22 | | HR | 18 |
| ATLANTIC WEST | 2511 | 143 | CD | 12 | 144 | AA | 59 | 142 | AA | 32 |
| | | | EP | 86 | | LR | 16 | | LR | 18 |
| | | | ND | 2 | | MR | 12 | | MR | 29 |
| | | | | | | HR | 13 | | HR | 20 |
| HORIZON ELEMENTARY | 2531 | 142 | CD | 17 | 142 | AA | 69 | 127 | AA | 42 |
| | | | EP | 75 | | LR | 13 | | LR | 27 |
| | | | ND | 8 | | MR | 6 | | MR | 24 |
| | | | | | | HR | 12 | | HR | 7 |

** No data are reported when fewer than 10 students were screened or if a cell equals 0% or 100%.

Legend:
ECHOS Status:
CD = Consistently Demonstrating
EP = Emerging/Progressing
ND = Not Yet Demonstrating

DIBELS Status:
AA = Above Average
LR = Low Risk
MR = Moderate Risk
HR = High Risk



Florida Kindergarten Readiness Screener (FLKRS) District Report of School Results Fall 2007

District Name: BROWARD
District Number: 06

| School Name | School Number | ECHOS Status Results | | | DIBELS Status Results | | | | | |
|----------------------------|---------------|----------------------|--------|---------|-------------------------------|--------|-----------------------|-------------------------------|--------|-----------------------|
| | | Number Reported | Status | Percent | Letter Naming Number Reported | Status | Letter Naming Percent | Initial Sound Number Reported | Status | Initial Sound Percent |
| FLAMINGO ELEMENTARY | 2541 | 90 | | | 91 | | | 91 | | |
| | | | CD | 68 | | AA | 80 | | AA | 52 |
| | | | EP | 23 | | LR | 9 | | LR | 18 |
| | | | ND | 9 | | MR | 7 | | MR | 15 |
| | | | | | | HR | 4 | | HR | 15 |
| CORAL SPRINGS ELEM | 2551 | 100 | | | 101 | | | 98 | | |
| | | | CD | 20 | | AA | 71 | | AA | 36 |
| | | | EP | 64 | | LR | 10 | | LR | 18 |
| | | | ND | 16 | | MR | 9 | | MR | 26 |
| | | | | | | HR | 10 | | HR | 20 |
| TAMARAC ELEMENTARY | 2621 | 142 | | | 137 | | | 137 | | |
| | | | CD | 42 | | AA | 72 | | AA | 21 |
| | | | EP | 46 | | LR | 8 | | LR | 18 |
| | | | ND | 12 | | MR | 12 | | MR | 26 |
| | | | | | | HR | 7 | | HR | 35 |
| FOREST HILLS ELEM | 2631 | 98 | | | 97 | | | 92 | | |
| | | | CD | 32 | | AA | 65 | | AA | 39 |
| | | | EP | 47 | | LR | 15 | | LR | 25 |
| | | | ND | 21 | | MR | 12 | | MR | 16 |
| | | | | | | HR | 7 | | HR | 20 |

Legend:
ECHOS Status:
 CD = Consistently Demonstrating
 EP = Emerging/Progressing
 ND = Not Yet Demonstrating
DIBELS Status:
 AA = Above Average
 LR = Low Risk
 MR = Moderate Risk
 HR = High Risk

** No data are reported when fewer than 10 students were screened or if a cell equals 0% or 100%.



Florida Kindergarten Readiness Screener (FLKRS) District Report of School Results Fall 2007

District Name: BROWARD
District Number: 06

| School Name | School Number | ECHOS Status Results | | | DIBELS Status Results | | | | | |
|---------------------|---------------|----------------------|--------|---------|-------------------------------|--------|-----------------------|-------------------------------|--------|-----------------------|
| | | Number Reported | Status | Percent | Letter Naming Number Reported | Status | Letter Naming Percent | Initial Sound Number Reported | Status | Initial Sound Percent |
| CENTRAL PARK ELEM | 2641 | 178 | CD | 21 | 178 | AA | 88 | 177 | AA | 73 |
| | | | EP | 68 | | LR | 6 | | LR | 17 |
| | | | ND | 11 | | MR | 4 | | MR | 7 |
| | | | | | | HR | 3 | | HR | 3 |
| PEMBROKE LAKES ELEM | 2661 | 103 | CD | 16 | 102 | AA | 78 | 101 | AA | 36 |
| | | | EP | 76 | | LR | 9 | | LR | 22 |
| | | | ND | 9 | | MR | 8 | | MR | 28 |
| | | | | | | HR | 5 | | HR | 15 |
| NOB HILL ELEMENTARY | 2671 | 111 | CD | 19 | 111 | AA | 74 | 111 | AA | 41 |
| | | | EP | 80 | | LR | 13 | | LR | 19 |
| | | | ND | 1 | | MR | 5 | | MR | 23 |
| | | | | | | HR | 9 | | HR | 17 |
| WESTCHESTER ELEM | 2681 | 145 | CD | 21 | 145 | AA | 79 | 140 | AA | 55 |
| | | | EP | 58 | | LR | 14 | | LR | 19 |
| | | | ND | 21 | | MR | 5 | | MR | 13 |
| | | | | | | HR | 2 | | HR | 13 |

Legend:

- ECHOS Status:**
- CD = Consistently Demonstrating
 - EP = Emerging/Progressing
 - ND = Not Yet Demonstrating
- DIBELS Status:**
- AA = Above Average
 - LR = Low Risk
 - MR = Moderate Risk
 - HR = High Risk

** No data are reported when fewer than 10 students were screened or if a cell equals 0% or 100%.



Florida Kindergarten Readiness Screener (FLKRS) District Report of School Results Fall 2007

District Name: BROWARD
District Number: 06

| School Name | School Number | ECHOS Status Results | | | DIBELS Status Results | | | | | |
|-------------------|---------------|----------------------|--------|---------|-------------------------------|--------|-----------------------|-------------------------------|--------|-----------------------|
| | | Number Reported | Status | Percent | Letter Naming Number Reported | Status | Letter Naming Percent | Initial Sound Number Reported | Status | Initial Sound Percent |
| MORROW ELEMENTARY | 2691 | | CD | 5 | 80 | AA | 61 | 80 | AA | 46 |
| | | | EP | 83 | | LR | 10 | | LR | 18 |
| | | | ND | 12 | | MR | 16 | | MR | 26 |
| | | | | | | HR | 13 | | HR | 10 |
| | | | | | | | | | | |
| RAMBLEWOOD ELEM | 2721 | | CD | 87 | 124 | AA | 73 | 116 | AA | 64 |
| | | | EP | 11 | | LR | 12 | | LR | 17 |
| | | | ND | 2 | | MR | 8 | | MR | 12 |
| | | | | | | HR | 6 | | HR | 7 |
| MAPLEWOOD ELEM | 2741 | | | | 99 | | | 99 | | |
| | | | CD | 32 | | AA | 74 | | AA | 56 |
| | | | EP | 58 | | LR | 10 | | LR | 24 |
| | | | ND | 10 | | MR | 8 | | MR | 12 |
| | | | | | | HR | 8 | | HR | 8 |
| DAVIE ELEMENTARY | 2801 | | CD | 53 | 140 | AA | 44 | 134 | AA | 6 |
| | | | EP | 30 | | LR | 14 | | LR | 13 |
| | | | ND | 17 | | MR | 9 | | MR | 12 |
| | | | | | | HR | 34 | | HR | 69 |

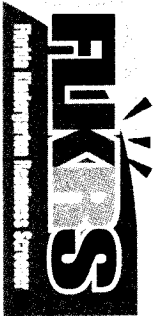
** No data are reported when fewer than 10 students were screened or if a cell equals 0% or 100%.

Legend:

ECHOS Status:

CD = Consistently Demonstrating
EP = Emerging/Progressing
ND = Not Yet Demonstrating

DIBELS Status:
AA = Above Average
LR = Low Risk
MR = Moderate Risk
HR = High Risk



Florida Kindergarten Readiness Screener (FLKRS) District Report of School Results Fall 2007

District Name: BROWARD
District Number: 06

| School Name | School Number | ECHOS Status Results | | | DIBELS Status Results | | | | | |
|--------------------|---------------|----------------------|--------|---------|-------------------------------|--------|-----------------------|-------------------------------|--------|-----------------------|
| | | Number Reported | Status | Percent | Letter Naming Number Reported | Status | Letter Naming Percent | Initial Sound Number Reported | Status | Initial Sound Percent |
| PINWOOD ELEMENTARY | 2811 | 140 | CD | 16 | 136 | AA | 77 | 134 | AA | 55 |
| | | | EP | 59 | | LR | 8 | | LR | 19 |
| | | | ND | 24 | | MR | 5 | | MR | 12 |
| | | | | | | HR | 10 | | HR | 14 |
| GRIFFIN ELEMENTARY | 2851 | 80 | CD | 15 | 85 | AA | 82 | 84 | AA | 58 |
| | | | EP | 44 | | LR | 11 | | LR | 18 |
| | | | ND | 41 | | MR | 4 | | MR | 15 |
| | | | | | | HR | 4 | | HR | 8 |
| PINES LAKES ELEM | 2861 | 119 | CD | 17 | 125 | AA | 66 | 120 | AA | 33 |
| | | | EP | 80 | | LR | 14 | | LR | 18 |
| | | | ND | 3 | | MR | 8 | | MR | 20 |
| | | | | | | HR | 13 | | HR | 30 |
| SEA CASTLE ELEM | 2871 | 153 | CD | 1 | 147 | AA | 77 | 140 | AA | 44 |
| | | | EP | 69 | | LR | 8 | | LR | 27 |
| | | | ND | 31 | | MR | 8 | | MR | 13 |
| | | | | | | HR | 7 | | HR | 16 |

** No data are reported when fewer than 10 students were screened or if a cell equals 0% or 100%.

Legend:

- ECHOS Status:**
- CD = Consistently Demonstrating
 - EP = Emerging/Progressing
 - ND = Not Yet Demonstrating
- DIBELS Status:**
- AA = Above Average
 - LR = Low Risk
 - MR = Moderate Risk
 - HR = High Risk



Florida Kindergarten Readiness Screener (FLKRS) District Report of School Results Fall 2007

District Name: BROWARD
District Number: 06

| School Name | School Number | ECHOS Status Results | | | DIBELS Status Results | | | | | |
|--------------------|---------------|----------------------|--------|---------|-------------------------------|--------|-----------------------|-------------------------------|--------|-----------------------|
| | | Number Reported | Status | Percent | Letter Naming Number Reported | Status | Letter Naming Percent | Initial Sound Number Reported | Status | Initial Sound Percent |
| WELLEBY ELEMENTARY | 2881 | 124 | CD | 39 | 123 | AA | 72 | 118 | AA | 58 |
| | | | EP | 48 | | LR | 14 | | LR | 11 |
| | | | ND | 13 | | MR | 6 | | MR | 18 |
| | | | | | | HR | 8 | | HR | 14 |
| RIVERGLADES ELEM | 2891 | 133 | CD | 42 | 133 | AA | 86 | 132 | AA | 67 |
| | | | EP | 54 | | LR | 6 | | LR | 11 |
| | | | ND | 4 | | MR | 5 | | MR | 13 |
| | | | | | | HR | 3 | | HR | 8 |
| EVERGLADES ELEM | 2942 | 136 | CD | 73 | 136 | AA | 83 | 134 | AA | 71 |
| | | | EP | 21 | | LR | 14 | | LR | 16 |
| | | | ND | 7 | | MR | 1 | | MR | 10 |
| | | | | | | HR | 1 | | HR | 3 |
| CHAPEL TRAIL ELEM | 2961 | 124 | CD | 22 | 125 | AA | 78 | 120 | AA | 63 |
| | | | EP | 72 | | LR | 10 | | LR | 19 |
| | | | ND | 6 | | MR | 6 | | MR | 11 |
| | | | | | | HR | 6 | | HR | 8 |

** No data are reported when fewer than 10 students were screened or if a cell equals 0% or 100%.

Legend:
ECHOS Status:

CD = Consistently Demonstrating
EP = Emerging/Progressing
ND = Not Yet Demonstrating

DIBELS Status:

AA = Above Average
LR = Low Risk
MR = Moderate Risk
HR = High Risk



Florida Kindergarten Readiness Screener (FLKRS) District Report of School Results Fall 2007

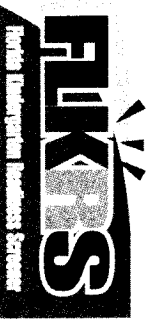
District Name: BROWARD
District Number: 06

| School Name | School Number | ECHOS Status Results | | | DIBELS Status Results | | | | | |
|----------------------|---------------|----------------------|--------|---------|-------------------------------|--------|-----------------------|-------------------------------|--------|-----------------------|
| | | Number Reported | Status | Percent | Letter Naming Number Reported | Status | Letter Naming Percent | Initial Sound Number Reported | Status | Initial Sound Percent |
| COUNTRY ISLES ELEM | 2981 | 123 | CD | 81 | 123 | AA | 73 | 123 | AA | 51 |
| | | | EP | 15 | | LR | 14 | | LR | 20 |
| | | | ND | 4 | | MR | 11 | | MR | 16 |
| | | | | | | HR | 2 | | HR | 13 |
| RIVERSIDE ELEMENTARY | 3031 | 117 | CD | 62 | 117 | AA | 80 | 116 | AA | 64 |
| | | | EP | 21 | | LR | 9 | | LR | 20 |
| | | | ND | 17 | | MR | 9 | | MR | 8 |
| | | | | | | HR | 3 | | HR | 9 |
| CORAL PARK ELEM | 3041 | 107 | CD | 29 | 107 | AA | 81 | 104 | AA | 58 |
| | | | EP | 64 | | LR | 11 | | LR | 19 |
| | | | ND | 7 | | MR | 3 | | MR | 18 |
| | | | | | | HR | 5 | | HR | 5 |
| SANDPIPER ELEMENTARY | 3061 | 90 | CD | 59 | 113 | AA | 68 | 111 | AA | 33 |
| | | | EP | 31 | | LR | 12 | | LR | 22 |
| | | | ND | 10 | | MR | 13 | | MR | 27 |
| | | | | | | HR | 7 | | HR | 18 |

** No data are reported when fewer than 10 students were screened or if a cell equals 0% or 100%.

Legend:
ECHOS Status:
CD = Consistently Demonstrating
EP = Emerging/Progressing
ND = Not Yet Demonstrating

DIBELS Status:
AA = Above Average
LR = Low Risk
MR = Moderate Risk
HR = High Risk

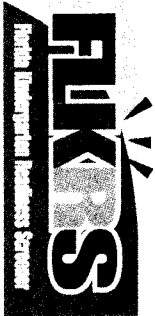


Florida Kindergarten Readiness Screener (FLKRS) District Report of School Results Fall 2007

District Name: BROWARD
District Number: 06

| School Name | School Number | ECHOS Status Results | | | DIBELS Status Results | | | | | |
|--------------------|---------------|----------------------|--------|---------|-------------------------------|--------|-----------------------|-------------------------------|--------|-----------------------|
| | | Number Reported | Status | Percent | Letter Naming Number Reported | Status | Letter Naming Percent | Initial Sound Number Reported | Status | Initial Sound Percent |
| SILVER RIDGE ELEM | 3081 | 125 | CD | 70 | 125 | AA | 75 | 119 | AA | 66 |
| | | | EP | 23 | | LR | 8 | | LR | 16 |
| | | | ND | 7 | | MR | 8 | | MR | 11 |
| | | | | | | HR | 9 | | HR | 8 |
| WINSTON PARK ELEM | 3091 | 193 | CD | 51 | 192 | AA | 73 | 186 | AA | 53 |
| | | | EP | 41 | | LR | 10 | | LR | 26 |
| | | | ND | 8 | | MR | 10 | | MR | 17 |
| | | | | | | HR | 6 | | HR | 4 |
| COUNTRY HILLS ELEM | 3111 | 127 | CD | 35 | 126 | AA | 83 | 123 | AA | 54 |
| | | | EP | 58 | | LR | 7 | | LR | 24 |
| | | | ND | 6 | | MR | 4 | | MR | 14 |
| | | | | | | HR | 6 | | HR | 7 |
| QUIET WATERS ELEM | 3121 | 196 | CD | 61 | 195 | AA | 65 | 190 | AA | 48 |
| | | | EP | 30 | | LR | 11 | | LR | 21 |
| | | | ND | 9 | | MR | 15 | | MR | 19 |
| | | | | | | HR | 10 | | HR | 12 |

Legend: **ECHOS Status:** CD= Consistently Demonstrating, EP= Emerging/Progressing, ND= Not Yet Demonstrating. **DIBELS Status:** AA= Above Average, LR= Low Risk, MR= Moderate Risk, HR= High Risk. ** No data are reported when fewer than 10 students were screened or if a cell equals 0% or 100%.



Florida Kindergarten Readiness Screener (FLKRS) District Report of School Results Fall 2007

District Name: BROWARD
District Number: 06

| School Name | School Number | ECHOS Status Results | | | DIBELS Status Results | | | | | |
|-------------------|---------------|----------------------|--------|---------|-------------------------------|--------|-----------------------|-------------------------------|--------|-----------------------|
| | | Number Reported | Status | Percent | Letter Naming Number Reported | Status | Letter Naming Percent | Initial Sound Number Reported | Status | Initial Sound Percent |
| HAWKES BLUFF | 3131 | 125 | CD | 58 | 124 | AA | 86 | 124 | AA | 35 |
| | | | EP | 37 | | LR | 8 | | LR | 27 |
| | | | ND | 5 | | MR | 3 | | MR | 27 |
| | | | | | | HR | 2 | | HR | 10 |
| | | | | | | | | | | |
| PARK SPRINGS ELEM | 3171 | 125 | CD | 60 | 125 | AA | 78 | 116 | AA | 46 |
| | | | EP | 26 | | LR | 12 | | LR | 25 |
| | | | ND | 14 | | MR | 8 | | MR | 22 |
| | | | | | | HR | 2 | | HR | 7 |
| | | | | | | | | | | |
| INDIAN TRACE ELEM | 3181 | 105 | CD | 33 | 105 | AA | 81 | 104 | AA | 57 |
| | | | EP | 65 | | LR | 10 | | LR | 17 |
| | | | ND | 2 | | MR | 6 | | MR | 19 |
| | | | | | | HR | 4 | | HR | 7 |
| | | | | | | | | | | |
| EMBASSY CREEK | 3191 | 106 | CD | 41 | 106 | AA | 84 | 106 | AA | 73 |
| | | | EP | 57 | | LR | 9 | | LR | 13 |
| | | | ND | 3 | | MR | 6 | | MR | 7 |
| | | | | | | HR | 1 | | HR | 8 |
| | | | | | | | | | | |

** No data are reported when fewer than 10 students were screened or if a cell equals 0% or 100%.

Legend:
ECHOS Status:
 CD = Consistently Demonstrating
 EP = Emerging/Progressing
 ND = Not Yet Demonstrating
DIBELS Status:
 AA = Above Average
 LR = Low Risk
 MR = Moderate Risk
 HR = High Risk



Florida Kindergarten Readiness Screener (FLKRS) District Report of School Results Fall 2007

District Name: BROWARD
District Number: 06

| School Name | School Number | ECHOS Status Results | | | DIBELS Status Results | | | | | |
|----------------------|---------------|----------------------|--------|---------|-------------------------------|--------|-----------------------|-------------------------------|--------|-----------------------|
| | | Number Reported | Status | Percent | Letter Naming Number Reported | Status | Letter Naming Percent | Initial Sound Number Reported | Status | Initial Sound Percent |
| VIRGINIA S YOUNG ELE | 3321 | 100 | CD | 49 | 100 | AA | 84 | 99 | AA | 36 |
| | | | EP | 48 | | LR | 8 | | LR | 32 |
| | | | ND | 3 | | MR | 5 | | MR | 25 |
| | | | | | | HR | 3 | | HR | 6 |
| SILVER LAKES ELEM | 3371 | 122 | CD | 54 | 115 | AA | 77 | 114 | AA | 64 |
| | | | EP | 40 | | LR | 12 | | LR | 14 |
| | | | ND | 6 | | MR | 6 | | MR | 15 |
| | | | | | | HR | 4 | | HR | 7 |
| SAWGRASS ELEMENTARY | 3401 | 131 | CD | 82 | 131 | AA | 71 | 126 | AA | 44 |
| | | | EP | 16 | | LR | 18 | | LR | 22 |
| | | | ND | 2 | | MR | 7 | | MR | 20 |
| | | | | | | HR | 5 | | HR | 13 |
| EAGLE RIDGE SCHOOL | 3441 | 119 | CD | 73 | 119 | AA | 78 | 115 | AA | 63 |
| | | | EP | 20 | | LR | 10 | | LR | 16 |
| | | | ND | 7 | | MR | 8 | | MR | 16 |
| | | | | | | HR | 4 | | HR | 6 |

** No data are reported when fewer than 10 students were screened or if a cell equals 0% or 100%.

Legend:
ECHOS Status:
 CD = Consistently Demonstrating
 EP = Emerging/Progressing
 ND = Not Yet Demonstrating
DIBELS Status:
 AA = Above Average
 LR = Low Risk
 MR = Moderate Risk
 HR = High Risk



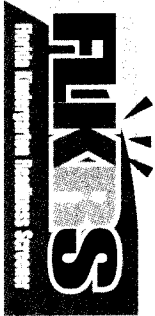
Florida Kindergarten Readiness Screener (FLKRS) District Report of School Results Fall 2007

District Name: BROWARD
District Number: 06

| School Name | School Number | ECHOS Status Results | | | DIBELS Status Results | | | | | |
|----------------------|---------------|----------------------|--------|---------|-------------------------------|--------|-----------------------|-------------------------------|--------|-----------------------|
| | | Number Reported | Status | Percent | Letter Naming Number Reported | Status | Letter Naming Percent | Initial Sound Number Reported | Status | Initial Sound Percent |
| EAGLE POINT ELEM | 3461 | 173 | CD | 42 | 175 | AA | 75 | 173 | AA | 52 |
| | | | EP | 42 | | LR | 13 | | LR | 16 |
| | | | ND | 16 | | MR | 6 | | MR | 20 |
| | | | | | | HR | 6 | | HR | 13 |
| TRADEWINDS ELEM | 3481 | 171 | CD | 56 | 172 | AA | 76 | 165 | AA | 56 |
| | | | EP | 32 | | LR | 8 | | LR | 20 |
| | | | ND | 12 | | MR | 10 | | MR | 8 |
| | | | | | | HR | 6 | | HR | 16 |
| SILVER PALMS ELEM | 3491 | 121 | CD | 65 | 121 | AA | 83 | 121 | AA | 58 |
| | | | EP | 31 | | LR | 6 | | LR | 15 |
| | | | ND | 3 | | MR | 11 | | MR | 19 |
| | | | | | | HR | 1 | | HR | 8 |
| FOX TRAIL ELEMENTARY | 3531 | 166 | CD | 63 | 165 | AA | 82 | 164 | AA | 56 |
| | | | EP | 31 | | LR | 8 | | LR | 21 |
| | | | ND | 6 | | MR | 5 | | MR | 15 |
| | | | | | | HR | 4 | | HR | 8 |

Legend:
ECHOS Status:
 CD = Consistently Demonstrating
 EP = Emerging/Progressing
 ND = Not Yet Demonstrating
DIBELS Status:
 AA = Above Average
 LR = Low Risk
 MR = Moderate Risk
 HR = High Risk

** No data are reported when fewer than 10 students were screened or if a cell equals 0% or 100%.



Florida Kindergarten Readiness Screener (FLKRS) District Report of School Results Fall 2007

District Name: BROWARD
District Number: 06

| School Name | School Number | ECHOS Status Results | | | DIBELS Status Results | | | | | |
|---------------------|---------------|----------------------|--------|---------|-------------------------------|--------|-----------------------|-------------------------------|--------|-----------------------|
| | | Number Reported | Status | Percent | Letter Naming Number Reported | Status | Letter Naming Percent | Initial Sound Number Reported | Status | Initial Sound Percent |
| PANTHER RUN ELEM | 3571 | 103 | CD | 28 | 100 | AA | 78 | 95 | AA | 54 |
| | | | EP | 56 | | LR | 8 | | LR | 21 |
| | | | ND | 16 | | MR | 12 | | MR | 18 |
| | | | | | | HR | 2 | | HR | 7 |
| SILVER SHORES ELEM | 3581 | 97 | CD | 31 | 96 | AA | 81 | 96 | AA | 42 |
| | | | EP | 59 | | LR | 11 | | LR | 22 |
| | | | ND | 10 | | MR | 3 | | MR | 20 |
| | | | | | | HR | 4 | | HR | 17 |
| LAKESIDE ELEMENTARY | 3591 | 127 | CD | 29 | 127 | AA | 76 | 121 | AA | 52 |
| | | | EP | 65 | | LR | 11 | | LR | 21 |
| | | | ND | 6 | | MR | 6 | | MR | 14 |
| | | | | | | HR | 7 | | HR | 13 |
| PARKSIDE ELEMENTARY | 3631 | 123 | CD | 20 | 124 | AA | 68 | 123 | AA | 42 |
| | | | EP | 73 | | LR | 10 | | LR | 24 |
| | | | ND | 7 | | MR | 14 | | MR | 15 |
| | | | | | | HR | 9 | | HR | 18 |

** No data are reported when fewer than 10 students were screened or if a cell equals 0% or 100%.

Legend:
ECHOS Status:

CD = Consistently Demonstrating
EP = Emerging/Progressing
ND = Not Yet Demonstrating

DIBELS Status:

AA = Above Average
LR = Low Risk
MR = Moderate Risk
HR = High Risk



Florida Kindergarten Readiness Screener (FLKRS) District Report of School Results Fall 2007

District Name: BROWARD
District Number: 06

| School Name | School Number | ECHOS Status Results | | | DIBELS Status Results | | | | | |
|--------------------------|---------------|----------------------|--------|---------|-------------------------------|--------|-----------------------|-------------------------------|--------|-----------------------|
| | | Number Reported | Status | Percent | Letter Naming Number Reported | Status | Letter Naming Percent | Initial Sound Number Reported | Status | Initial Sound Percent |
| GATOR RUN ELEM | 3642 | 184 | | | 179 | | | 178 | | |
| | | | CD | 58 | | AA | 81 | | AA | 67 |
| | | | EP | 37 | | LR | 9 | | LR | 17 |
| | | | ND | 5 | | MR | 7 | | MR | 13 |
| | | | | | | HR | 3 | | HR | 2 |
| SUNSET LAKES ELEM | 3661 | 139 | | | 140 | | | 134 | | |
| | | | CD | 35 | | AA | 82 | | AA | 71 |
| | | | EP | 55 | | LR | 7 | | LR | 16 |
| | | | ND | 10 | | MR | 4 | | MR | 8 |
| | | | | | | HR | 6 | | HR | 5 |
| ROCK ISLAND ELEM | 3701 | 88 | | | 101 | | | 97 | | |
| | | | CD | 22 | | AA | 65 | | AA | 38 |
| | | | EP | 56 | | LR | 7 | | LR | 20 |
| | | | ND | 23 | | MR | 10 | | MR | 20 |
| | | | | | | HR | 18 | | HR | 23 |
| COCONUT PALM ELEM | 3741 | 160 | | | 159 | | | 156 | | |
| | | | CD | 13 | | AA | 70 | | AA | 53 |
| | | | EP | 81 | | LR | 16 | | LR | 14 |
| | | | ND | 7 | | MR | 7 | | MR | 14 |
| | | | | | | HR | 7 | | HR | 19 |

Legend:
ECHOS Status:
 CD = Consistently Demonstrating
 EP = Emerging/Progressing
 ND = Not Yet Demonstrating
DIBELS Status:
 AA = Above Average
 LR = Low Risk
 MR = Moderate Risk
 HR = High Risk

** No data are reported when fewer than 10 students were screened or if a cell equals 0% or 100%.



Florida Kindergarten Readiness Screener (FLKRS) District Report of School Results Fall 2007

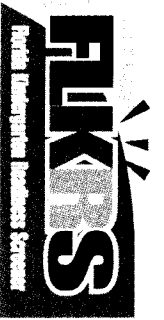
District Name: BROWARD
District Number: 06

| School Name | School Number | ECHOS Status Results | | | DIBELS Status Results | | | | | |
|------------------|---------------|----------------------|--------|---------|-------------------------------|--------|-----------------------|-------------------------------|--------|-----------------------|
| | | Number Reported | Status | Percent | Letter Naming Number Reported | Status | Letter Naming Percent | Initial Sound Number Reported | Status | Initial Sound Percent |
| DOLPHIN BAY ELEM | 3751 | 151 | CD | 53 | 148 | AA | 73 | 148 | AA | 49 |
| | | | EP | 35 | | LR | 14 | | LR | 19 |
| | | | ND | 12 | | MR | 6 | | MR | 20 |
| | | | | | | HR | 7 | | HR | 12 |
| PARK LAKES ELEM | 3761 | 163 | CD | 33 | 170 | AA | 69 | 151 | AA | 50 |
| | | | EP | 48 | | LR | 7 | | LR | 19 |
| | | | ND | 20 | | MR | 12 | | MR | 21 |
| | | | | | | HR | 12 | | HR | 10 |
| CHALLENGER ELEM | 3771 | 169 | CD | 37 | 173 | AA | 72 | 168 | AA | 46 |
| | | | EP | 51 | | LR | 13 | | LR | 23 |
| | | | ND | 12 | | MR | 6 | | MR | 16 |
| | | | | | | HR | 10 | | HR | 15 |
| PARK TRAILS ELEM | 3781 | 163 | CD | 77 | 163 | AA | 90 | 161 | AA | 75 |
| | | | EP | 21 | | LR | 9 | | LR | 9 |
| | | | ND | 1 | | MR | 1 | | MR | 7 |
| | | | | | | HR | 1 | | HR | 8 |

** No data are reported when fewer than 10 students were screened or if a cell equals 0% or 100%.

Legend:

- ECHOS Status:**
- CD = Consistently Demonstrating
 - EP = Emerging/Progressing
 - ND = Not Yet Demonstrating
- DIBELS Status:**
- AA = Above Average
 - LR = Low Risk
 - MR = Moderate Risk
 - HR = High Risk



Florida Kindergarten Readiness Screener (FLKRS) District Report of School Results Fall 2007

District Name: BROWARD
District Number: 06

| School Name | School Number | ECHOS Status Results | | | DIBELS Status Results | | | | | |
|-----------------------------|---------------|----------------------|--------|---------|-------------------------------|--------|-----------------------|-------------------------------|--------|-----------------------|
| | | Number Reported | Status | Percent | Letter Naming Number Reported | Status | Letter Naming Percent | Initial Sound Number Reported | Status | Initial Sound Percent |
| LIBERTY ELEMENTARY | 3821 | 180 | | | 181 | | | 179 | | |
| | | | CD | 47 | | AA | 70 | | AA | 49 |
| | | | EP | 36 | | LR | 8 | | LR | 19 |
| | | | ND | 17 | | MIR | 8 | | MIR | 16 |
| | | | | | | HR | 15 | | HR | 16 |
| MANATEE BAY ELEM | 3841 | 172 | | | 172 | | | 172 | | |
| | | | CD | 84 | | AA | 80 | | AA | 65 |
| | | | EP | 10 | | LR | 8 | | LR | 14 |
| | | | ND | 5 | | MIR | 8 | | MIR | 12 |
| | | | | | | HR | 5 | | HR | 9 |
| SOMERSET NGBRHD | 5021 | 71 | | | 72 | | | 71 | | |
| | | | CD | 48 | | AA | 76 | | AA | 48 |
| | | | EP | 44 | | LR | 6 | | LR | 14 |
| | | | ND | 8 | | MIR | 14 | | MIR | 27 |
| | | | | | | HR | 4 | | HR | 11 |
| CHARTER OF EXCELLENC | 5031 | 55 | | | 55 | | | 51 | | |
| | | | CD | 35 | | AA | 71 | | AA | 37 |
| | | | EP | 53 | | LR | 15 | | LR | 27 |
| | | | ND | 13 | | MIR | 7 | | MIR | 22 |
| | | | | | | HR | 7 | | HR | 14 |

Legend:
ECHOS Status:
 CD = Consistently Demonstrating
 EP = Emerging/Progressing
 ND = Not Yet Demonstrating
DIBELS Status:
 AA = Above Average
 LR = Low Risk
 MR = Moderate Risk
 HR = High Risk

** No data are reported when fewer than 10 students were screened or if a cell equals 0% or 100%.



Florida Kindergarten Readiness Screener (FLKRS) District Report of School Results Fall 2007

District Name: BROWARD
District Number: 06

| School Name | School Number | ECHOS Status Results | | | DIBELS Status Results | | | | | | |
|----------------------|---------------|----------------------|--------|---------|-------------------------------|--------|-----------------------|-------------------------------|--------|-----------------------|--|
| | | Number Reported | Status | Percent | Letter Naming Number Reported | Status | Letter Naming Percent | Initial Sound Number Reported | Status | Initial Sound Percent | |
| CENTRAL CHARTER | 5041 | | | | 69 | | | | | | |
| | | CD | 14 | | 71 | AA | 83 | 68 | AA | 65 | |
| | | EP | 72 | | | LR | 6 | | LR | 10 | |
| | | ND | 13 | | | MR | 4 | | MR | 10 | |
| CITY PEMBROKE PINES | 5051 | | | | 287 | | | | | | |
| | | CD | 36 | | 290 | AA | 85 | 280 | AA | 59 | |
| | | EP | 54 | | | LR | 11 | | LR | 19 | |
| | | ND | 10 | | | MR | 4 | | MR | 15 | |
| CHARTER INSTITUTE | 5101 | | | | 2 | | | | | | |
| | | CD | ** | | 2 | AA | ** | 2 | AA | ** | |
| | | EP | ** | | | LR | ** | | LR | ** | |
| | | ND | ** | | | MR | ** | | MR | ** | |
| CHANCELLOR CH/WESTON | 5111 | | | | 128 | | | | | | |
| | | CD | 87 | | 128 | AA | 86 | 126 | AA | 86 | |
| | | EP | 12 | | | LR | 6 | | LR | 8 | |
| | | ND | 2 | | | MR | 5 | | MR | 4 | |
| | | | | | HR | 2 | | HR | 2 | | |

Legend:
ECHOS Status:
 CD = Consistently Demonstrating
 EP = Emerging/Progressing
 ND = Not Yet Demonstrating
DIBELS Status:
 AA = Above Average
 LR = Low Risk
 MR = Moderate Risk
 HR = High Risk

** No data are reported when fewer than 10 students were screened or if a cell equals 0% or 100%.



Florida Kindergarten Readiness Screener (FLKRS) District Report of School Results Fall 2007

District Name: BROWARD
District Number: 06

| School Name | School Number | ECHOS Status Results | | | DIBELS Status Results | | | | | |
|----------------------|---------------|----------------------|--------|---------|-------------------------------|--------|-----------------------|-------------------------------|--------|-----------------------|
| | | Number Reported | Status | Percent | Letter Naming Number Reported | Status | Letter Naming Percent | Initial Sound Number Reported | Status | Initial Sound Percent |
| INSTITUTE TRAINING | 5131 | 30 | CD | ** | 30 | AA | 80 | 30 | AA | 30 |
| | | | EP | ** | | LR | 7 | | LR | 20 |
| | | | ND | ** | | MR | 7 | | MR | 27 |
| | | | | | | HR | 7 | | HR | 23 |
| SOMERSET ACADEMY | 5141 | 115 | CD | 26 | 116 | AA | 76 | 115 | AA | 35 |
| | | | EP | 60 | | LR | 12 | | LR | 18 |
| | | | ND | 14 | | MR | 8 | | MR | 18 |
| | | | | | | HR | 4 | | HR | 29 |
| NORTH BROWARD ACAD | 5161 | 60 | CD | ** | 0 | AA | ** | 0 | AA | ** |
| | | | EP | ** | | LR | ** | | LR | ** |
| | | | ND | ** | | MR | ** | | MR | ** |
| | | | | | | HR | ** | | HR | ** |
| CHANCELLOR CHAR/N LA | 5171 | 60 | CD | 13 | 60 | AA | 67 | 58 | AA | 38 |
| | | | EP | 65 | | LR | 13 | | LR | 19 |
| | | | ND | 22 | | MR | 12 | | MR | 14 |
| | | | | | | HR | 8 | | HR | 29 |

** No data are reported when fewer than 10 students were screened or if a cell equals 0% or 100%.

Legend:
ECHOS Status:
CD = Consistently Demonstrating
EP = Emerging/Progressing
ND = Not Yet Demonstrating

DIBELS Status:
AA = Above Average
LR = Low Risk
MR = Moderate Risk
HR = High Risk



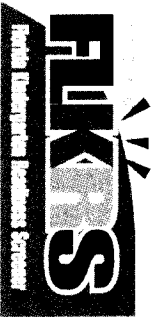
Florida Kindergarten Readiness Screener (FLKRS) District Report of School Results Fall 2007

District Name: BROWARD
District Number: 06

| School Name | School Number | ECHOS Status Results | | | DIBELS Status Results | | | | | |
|----------------------|---------------|----------------------|--------|---------|-------------------------------|--------|-----------------------|-------------------------------|--------|-----------------------|
| | | Number Reported | Status | Percent | Letter Naming Number Reported | Status | Letter Naming Percent | Initial Sound Number Reported | Status | Initial Sound Percent |
| SOMERSET ACAD DAVIE | 5211 | 24 | CD | 75 | 24 | AA | 50 | 24 | AA | ** |
| | | | EP | 21 | | LR | 25 | | LR | ** |
| | | | ND | 4 | | MR | 17 | | MR | ** |
| | | | | | | HR | 8 | | HR | ** |
| BROWARD COMM CHARTER | 5315 | 15 | CD | ** | 15 | AA | ** | 15 | AA | 27 |
| | | | EP | ** | | LR | ** | | LR | 7 |
| | | | ND | ** | | MR | ** | | MR | 33 |
| | | | | | | HR | ** | | HR | 33 |
| HOLLYWOOD ARTS & SCI | 5325 | 55 | CD | ** | 51 | AA | 75 | 50 | AA | 64 |
| | | | EP | ** | | LR | 12 | | LR | 22 |
| | | | ND | ** | | MR | 6 | | MR | 4 |
| | | | | | | HR | 8 | | HR | 10 |
| EAGLES NEST CHRTTR | 5355 | 13 | CD | 54 | 13 | AA | ** | 13 | AA | 54 |
| | | | EP | 38 | | LR | ** | | LR | 15 |
| | | | ND | 8 | | MR | ** | | MR | 23 |
| | | | | | | HR | ** | | HR | 8 |

Legend:
ECHOS Status:
 CD = Consistently Demonstrating
 EP = Emerging/Progressing
 ND = Not Yet Demonstrating
DIBELS Status:
 AA = Above Average
 LR = Low Risk
 MR = Moderate Risk
 HR = High Risk

** No data are reported when fewer than 10 students were screened or if a cell equals 0% or 100%.



Florida Kindergarten Readiness Screener (FLKRS) District Report of School Results

Fall 2007

District Name: BROWARD
District Number: 06

| School Name | School Number | ECHOS Status Results | | | DIBELS Status Results | | | | | |
|----------------------|---------------|----------------------|--------|---------|-------------------------------|--------|-----------------------|-------------------------------|--------|-----------------------|
| | | Number Reported | Status | Percent | Letter Naming Number Reported | Status | Letter Naming Percent | Initial Sound Number Reported | Status | Initial Sound Percent |
| FLORIDA INTERCULTURA | 5361 | 38 | CD | 29 | 37 | AA | 30 | 37 | AA | 43 |
| | | | EP | 50 | | LR | 32 | | LR | 22 |
| | | | ND | 21 | | MR | 14 | | MR | 22 |
| | | | | | | HR | 24 | | HR | 14 |
| PARAGON CHARTER | 5375 | 14 | CD | ** | 14 | AA | ** | 14 | AA | ** |
| | | | EP | ** | | LR | ** | | LR | ** |
| | | | ND | ** | | MR | ** | | MR | ** |
| | | | | | | HR | ** | | HR | ** |
| EXCELSIOR CHARTER OF | 5393 | 59 | CD | 24 | 59 | AA | 88 | 57 | AA | 74 |
| | | | EP | 73 | | LR | 5 | | LR | 14 |
| | | | ND | 3 | | MR | 5 | | MR | 5 |
| | | | | | | HR | 2 | | HR | 7 |
| SUNRISE COMMUNITY | 5398 | 34 | CD | 50 | 34 | AA | ** | 29 | AA | ** |
| | | | EP | 44 | | LR | ** | | LR | ** |
| | | | ND | 6 | | MR | ** | | MR | ** |
| | | | | | | HR | ** | | HR | ** |

Legend:
ECHOS Status:
 CD = Consistently Demonstrating
 EP = Emerging/Progressing
 ND = Not Yet Demonstrating
DIBELS Status:
 AA = Above Average
 LR = Low Risk
 MR = Moderate Risk
 HR = High Risk

** No data are reported when fewer than 10 students were screened or if a cell equals 0% or 100%.



Florida Kindergarten Readiness Screener (FLKRS) District Report of School Results Fall 2007

District Name: BROWARD
District Number: 06

| School Name | School Number | ECHOS Status Results | | | DIBELS Status Results | | | | | |
|----------------------|---------------|----------------------|--------|---------|-------------------------------|--------|-----------------------|-------------------------------|--------|-----------------------|
| | | Number Reported | Status | Percent | Letter Naming Number Reported | Status | Letter Naming Percent | Initial Sound Number Reported | Status | Initial Sound Percent |
| SUNSHINE ELEMENTARY | 5400 | 17 | CD | 29 | | AA | ** | | AA | 24 |
| | | | EP | 53 | | LR | ** | | LR | 18 |
| | | | ND | 18 | | MR | ** | | MR | 18 |
| | | | | | | HR | ** | | HR | 41 |
| | | | | | | | | | | |
| BROWARD COMMUNITY CH | 5403 | 28 | CD | ** | | AA | 75 | | AA | 75 |
| | | | EP | ** | | LR | 18 | | LR | 18 |
| | | | ND | ** | | MR | 4 | | MR | 4 |
| | | | | | | HR | 4 | | HR | 4 |
| | | | | | | | | | | |
| SUSIE DANIELS ELEM | 5404 | 32 | CD | 63 | | AA | ** | | AA | 42 |
| | | | EP | 34 | | LR | ** | | LR | 15 |
| | | | ND | 3 | | MR | ** | | MR | 24 |
| | | | | | | HR | ** | | HR | 18 |
| | | | | | | | | | | |
| MIRAMAR ELEMENTARY | 5405 | 72 | CD | 28 | | AA | 74 | | AA | 31 |
| | | | EP | 53 | | LR | 8 | | LR | 25 |
| | | | ND | 19 | | MR | 6 | | MR | 22 |
| | | | | | | HR | 13 | | HR | 22 |
| | | | | | | | | | | |

** No data are reported when fewer than 10 students were screened or if a cell equals 0% or 100%.

Legend:
ECHOS Status:
 CD = Consistently Demonstrating
 EP = Emerging/Progressing
 ND = Not Yet Demonstrating
DIBELS Status:
 AA = Above Average
 LR = Low Risk
 MR = Moderate Risk
 HR = High Risk



Florida Kindergarten Readiness Screener (FLKRS) District Report of School Results Fall 2007

District Name: BROWARD
District Number: 06

| School Name | School Number | ECHOS Status Results | | | DIBELS Status Results | | | | | |
|------------------------------|---------------|----------------------|--------|---------|-------------------------------|--------|-----------------------|-------------------------------|--------|-----------------------|
| | | Number Reported | Status | Percent | Letter Naming Number Reported | Status | Letter Naming Percent | Initial Sound Number Reported | Status | Initial Sound Percent |
| KIDZ CHOICE CHARTER | 5409 | 23 | | | 23 | | | 23 | | |
| | | | CD | 57 | | AA | ** | | AA | ** |
| | | | EP | 39 | | LR | ** | | LR | ** |
| | | | ND | 4 | | HR | ** | | HR | ** |
| DAYSRING ELEMENTARY | 5411 | 15 | | | 14 | | | 14 | | |
| | | | CD | 67 | | AA | ** | | AA | 7 |
| | | | EP | 27 | | LR | ** | | LR | 36 |
| | | | ND | 7 | | HR | ** | | HR | 36 |
| | | | | | | HR | ** | | HR | 21 |
| HOME SCHOOL | 9998 | 0 | | | 1 | | | 1 | | |
| | | | CD | ** | | AA | ** | | AA | ** |
| | | | EP | ** | | LR | ** | | LR | ** |
| | | | ND | ** | | HR | ** | | HR | ** |
| DISTRICT DISTRIBUTION | | 16,789 | | | 16,521 | | | 16,109 | | |
| | | | CD | 39 | | AA | 69 | | AA | 47 |
| | | | EP | 49 | | LR | 11 | | LR | 20 |
| | | | ND | 12 | | HR | 10 | | HR | 18 |

** No data are reported when fewer than 10 students were screened or if a cell equals 0% or 100%.

Legend:
ECHOS Status:

CD= Consistently Demonstrating
EP = Emerging/Progressing
ND= Not Yet Demonstrating

DIBELS Status:

AA = Above Average
LR = Low Risk
MR = Moderate Risk
HR = High Risk



Florida Kindergarten Readiness Screener (FLKRS)
District Report of School Results
Fall 2007

District Name: BROWARD
 District Number: 06

| School Name | School Number | ECHOS Status Results | | | DIBELS Status Results | | | | | |
|---------------------------|---------------|----------------------|--------|---------|-------------------------------|--------|-----------------------|-------------------------------|--------|-----------------------|
| | | Number Reported | Status | Percent | Letter Naming Number Reported | Status | Letter Naming Percent | Initial Sound Number Reported | Status | Initial Sound Percent |
| STATE DISTRIBUTION | | 180,351 | | | 177,996 | | | 173,214 | | |
| | | | CD | 48 | | AA | 58 | | AA | 45 |
| | | | EP | 40 | | LR | 14 | | LR | 19 |
| | | | ND | 12 | | MR | 14 | | MR | 18 |
| | | | | | | HR | 15 | | HR | 17 |
| | | | | | | | | | | |
| | | | | | | | | | | |
| | | | | | | | | | | |
| | | | | | | | | | | |
| | | | | | | | | | | |
| | | | | | | | | | | |
| | | | | | | | | | | |
| | | | | | | | | | | |
| | | | | | | | | | | |
| | | | | | | | | | | |
| | | | | | | | | | | |
| | | | | | | | | | | |
| | | | | | | | | | | |
| | | | | | | | | | | |
| | | | | | | | | | | |
| | | | | | | | | | | |
| | | | | | | | | | | |
| | | | | | | | | | | |
| | | | | | | | | | | |
| | | | | | | | | | | |
| | | | | | | | | | | |

Legend:

ECHOS Status:

CD = Consistently Demonstrating
 EP = Emerging/Progressing
 ND = Not Yet Demonstrating

DIBELS Status:

AA = Above Average
 LR = Low Risk
 MR = Moderate Risk
 HR = High Risk

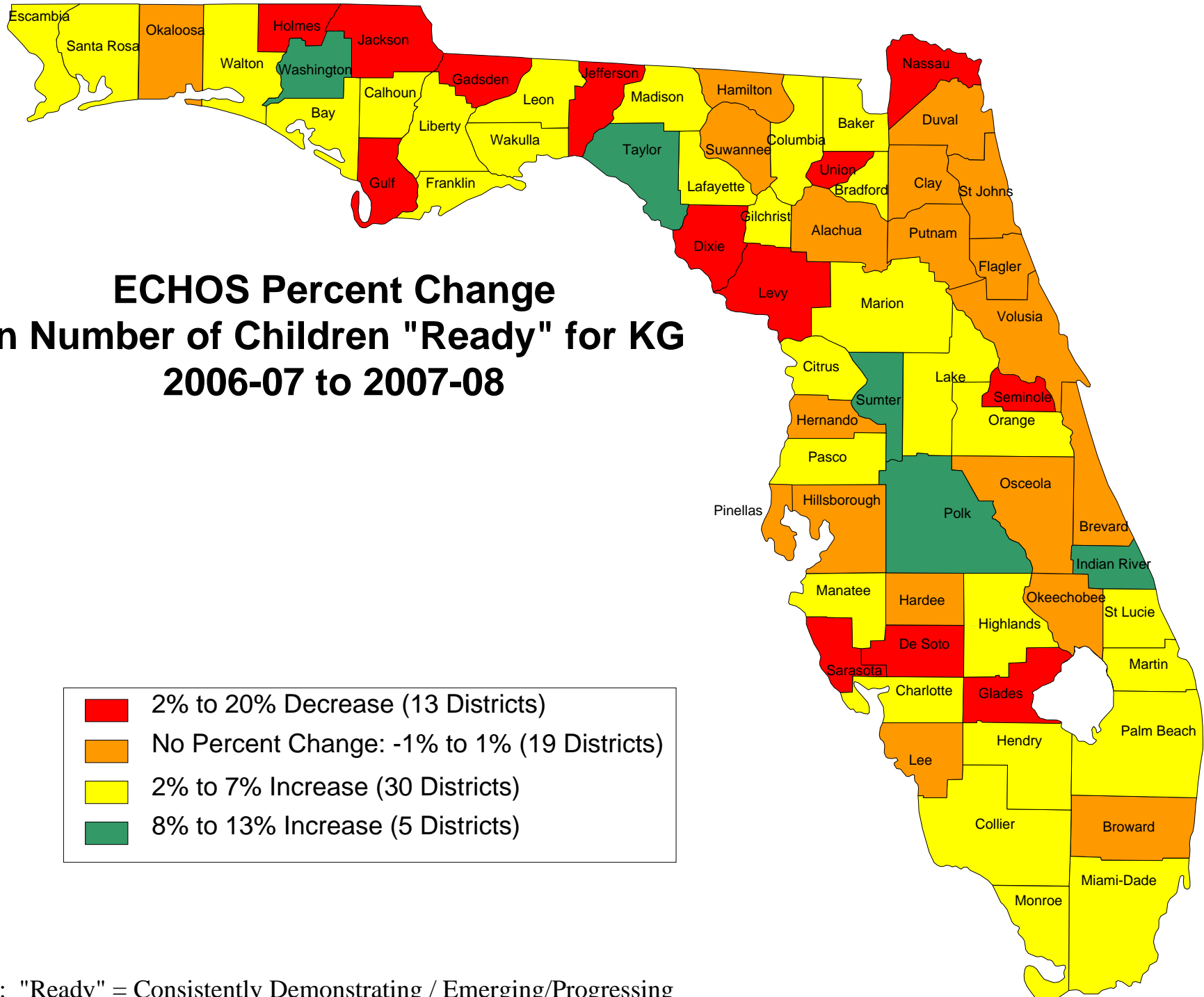
** No data are reported when fewer than 10 students were screened or if a cell equals 0% or 100%.

**ECHOS Percent Change
2006-07 to 2007-08**

| DISTRICT | 2006-07 | | | 2007-08 | | | Percent Change Consistently Demonstrating / Emerging- Progressing | Percent Change Not Yet Demonstrating |
|--------------|--|-------------------------------------|----------------------------|--|-------------------------------------|----------------------------|---|--|
| | Percent Consistently Demonstrating / Emerging- Progressing | Percent Not Yet Demonstrating | Total Screened ECHOS | Percent Consistently Demonstrating / Emerging- Progressing | Percent Not Yet Demonstrating | Total Screened ECHOS | | |
| ALACHUA | 86.51% | 13.49% | 2,031 | 85.95% | 14.05% | 1,914 | -1% | 1% |
| BAKER | 89.36% | 10.64% | 404 | 93.42% | 6.58% | 380 | 4% | -4% |
| BAY | 83.96% | 16.04% | 1,814 | 88.26% | 11.74% | 1,789 | 4% | -4% |
| BRADFORD | 88.03% | 11.97% | 259 | 90.51% | 9.49% | 253 | 2% | -2% |
| BREVARD | 87.76% | 12.24% | 4,704 | 88.70% | 11.30% | 4,849 | 1% | -1% |
| BROWARD | 86.46% | 13.54% | 17,535 | 87.61% | 12.39% | 16,789 | 1% | -1% |
| CALHOUN | 86.39% | 13.61% | 147 | 91.45% | 8.55% | 152 | 5% | -5% |
| CHARLOTTE | 90.12% | 9.88% | 1,063 | 94.03% | 5.97% | 1,039 | 4% | -4% |
| CITRUS | 87.38% | 12.62% | 1,006 | 89.75% | 10.25% | 966 | 2% | -2% |
| CLAY | 92.18% | 7.82% | 2,339 | 91.75% | 8.25% | 2,278 | 0% | 0% |
| COLLIER | 80.51% | 19.49% | 3,161 | 85.64% | 14.36% | 3,267 | 5% | -5% |
| COLUMBIA | 89.92% | 10.08% | 754 | 92.69% | 7.31% | 807 | 3% | -3% |
| DADE | 84.31% | 15.69% | 23,506 | 86.56% | 13.44% | 22,829 | 2% | -2% |
| DESOTO | 75.43% | 24.57% | 403 | 71.39% | 28.61% | 360 | -4% | 4% |
| DIXIE | 89.36% | 10.64% | 188 | 85.29% | 14.71% | 170 | -4% | 4% |
| DUVAL | 85.36% | 14.64% | 9,455 | 84.30% | 15.70% | 9,364 | -1% | 1% |
| ESCAMBIA | 87.41% | 12.59% | 2,978 | 89.07% | 10.93% | 2,910 | 2% | -2% |
| FLAGLER | 89.62% | 10.38% | 819 | 90.29% | 9.71% | 906 | 1% | -1% |
| FRANKLIN | 86.90% | 13.10% | 84 | 89.58% | 10.42% | 96 | 3% | -3% |
| GADSDEN | 86.27% | 13.73% | 517 | 84.50% | 15.50% | 484 | -2% | 2% |
| GILCHRIST | 86.41% | 13.59% | 206 | 90.71% | 9.29% | 183 | 4% | -4% |
| GLADES | 85.98% | 14.02% | 107 | 75.91% | 24.09% | 137 | -10% | 10% |
| GULF | 98.53% | 1.47% | 136 | 96.80% | 3.20% | 125 | -2% | 2% |
| HAMILTON | 81.51% | 18.49% | 146 | 80.27% | 19.73% | 147 | -1% | 1% |
| HARDEE | 76.81% | 23.19% | 414 | 77.63% | 22.37% | 380 | 1% | -1% |
| HENDRY | 81.25% | 18.75% | 560 | 83.71% | 16.29% | 528 | 2% | -2% |
| HERNANDO | 91.05% | 8.95% | 1,576 | 92.49% | 7.51% | 1,504 | 1% | -1% |
| HIGHLANDS | 85.40% | 14.60% | 918 | 90.40% | 9.60% | 854 | 5% | -5% |
| HILLSBOROUGH | 86.65% | 13.35% | 13,658 | 85.25% | 14.75% | 13,558 | -1% | 1% |
| HOLMES | 96.41% | 3.59% | 251 | 93.65% | 6.35% | 252 | -3% | 3% |
| INDIAN RIVER | 83.81% | 16.19% | 1,248 | 92.53% | 7.47% | 1,178 | 9% | -9% |
| JACKSON | 99.16% | 0.84% | 479 | 88.17% | 11.83% | 507 | -11% | 11% |
| JEFFERSON | 87.00% | 13.00% | 100 | 67.50% | 32.50% | 80 | -20% | 20% |
| LAFAYETTE | 87.62% | 12.38% | 105 | 90.36% | 9.64% | 83 | 3% | -3% |
| LAKE | 86.21% | 13.79% | 2,777 | 88.55% | 11.45% | 2,908 | 2% | -2% |
| LEE | 82.48% | 17.52% | 5,942 | 83.66% | 16.34% | 5,870 | 1% | -1% |
| LEON | 89.55% | 10.45% | 2,354 | 94.16% | 5.84% | 2,245 | 5% | -5% |
| LEVY | 88.29% | 11.71% | 444 | 81.61% | 18.39% | 435 | -7% | 7% |
| LIBERTY | 91.30% | 8.70% | 92 | 95.41% | 4.59% | 109 | 4% | -4% |
| MADISON | 85.00% | 15.00% | 200 | 90.50% | 9.50% | 200 | 6% | -6% |
| MANATEE | 82.79% | 17.21% | 3,195 | 84.53% | 15.47% | 3,135 | 2% | -2% |
| MARION | 89.68% | 10.32% | 2,955 | 93.32% | 6.68% | 2,947 | 4% | -4% |
| MARTIN | 85.43% | 14.57% | 1,194 | 87.96% | 12.04% | 1,146 | 3% | -3% |
| MONROE | 91.05% | 8.95% | 514 | 94.43% | 5.57% | 521 | 3% | -3% |
| NASSAU | 91.10% | 8.90% | 697 | 87.59% | 12.41% | 725 | -4% | 4% |
| OKALOOSA | 92.52% | 7.48% | 2,113 | 93.68% | 6.32% | 2,073 | 1% | -1% |
| OKEECHOBEE | 79.81% | 20.19% | 530 | 80.88% | 19.12% | 476 | 1% | -1% |

**ECHOS Percent Change
2006-07 to 2007-08**

| DISTRICT | 2006-07 | | | 2007-08 | | | Percent Change Consistently Demonstrating / Emerging- Progressing | Percent Change Not Yet Demonstrating |
|-------------|--|-------------------------------------|----------------------------|--|-------------------------------------|----------------------------|---|--|
| | Percent Consistently Demonstrating / Emerging- Progressing | Percent Not Yet Demonstrating | Total Screened ECHOS | Percent Consistently Demonstrating / Emerging- Progressing | Percent Not Yet Demonstrating | Total Screened ECHOS | | |
| ORANGE | 85.52% | 14.48% | 12,716 | 87.49% | 12.51% | 12,254 | 2% | -2% |
| OSCEOLA | 84.75% | 15.25% | 3,331 | 85.07% | 14.93% | 3,329 | 0% | 0% |
| PALM BEACH | 83.12% | 16.88% | 11,753 | 86.97% | 13.03% | 11,514 | 4% | -4% |
| PASCO | 90.32% | 9.68% | 4,503 | 92.37% | 7.63% | 4,546 | 2% | -2% |
| PINELLAS | 89.78% | 10.22% | 7,301 | 90.10% | 9.90% | 6,982 | 0% | 0% |
| POLK | 77.55% | 22.45% | 6,874 | 90.60% | 9.40% | 6,890 | 13% | -13% |
| PUTNAM | 83.15% | 16.85% | 902 | 84.40% | 15.60% | 859 | 1% | -1% |
| SAINT JOHNS | 91.74% | 8.26% | 1,779 | 90.91% | 9.09% | 1,882 | -1% | 1% |
| SAINT LUCIE | 81.79% | 18.21% | 2,845 | 87.62% | 12.38% | 2,835 | 6% | -6% |
| SANTA ROSA | 86.83% | 13.17% | 1,655 | 91.60% | 8.40% | 1,620 | 5% | -5% |
| SARASOTA | 90.29% | 9.71% | 2,792 | 87.87% | 12.13% | 2,753 | -2% | 2% |
| SEMINOLE | 92.42% | 7.58% | 4,260 | 90.92% | 9.08% | 4,062 | -2% | 2% |
| SUMTER | 85.77% | 14.23% | 520 | 94.02% | 5.98% | 535 | 8% | -8% |
| SUWANNEE | 87.32% | 12.68% | 426 | 86.54% | 13.46% | 431 | -1% | 1% |
| TAYLOR | 81.17% | 18.83% | 239 | 90.91% | 9.09% | 242 | 10% | -10% |
| UNION | 91.67% | 8.33% | 168 | 83.55% | 16.45% | 152 | -8% | 8% |
| VOLUSIA | 86.23% | 13.77% | 4,516 | 85.22% | 14.78% | 4,153 | -1% | 1% |
| WAKULLA | 93.35% | 6.65% | 376 | 95.57% | 4.43% | 316 | 2% | -2% |
| WALTON | 87.48% | 12.52% | 535 | 94.73% | 5.27% | 550 | 7% | -7% |
| WASHINGTON | 74.03% | 25.97% | 231 | 85.04% | 14.96% | 234 | 11% | -11% |
| STATE TOTAL | 86.00% | 14.00% | 183,800 | 88.00% | 12.00% | 180,047 | 2% | -2% |



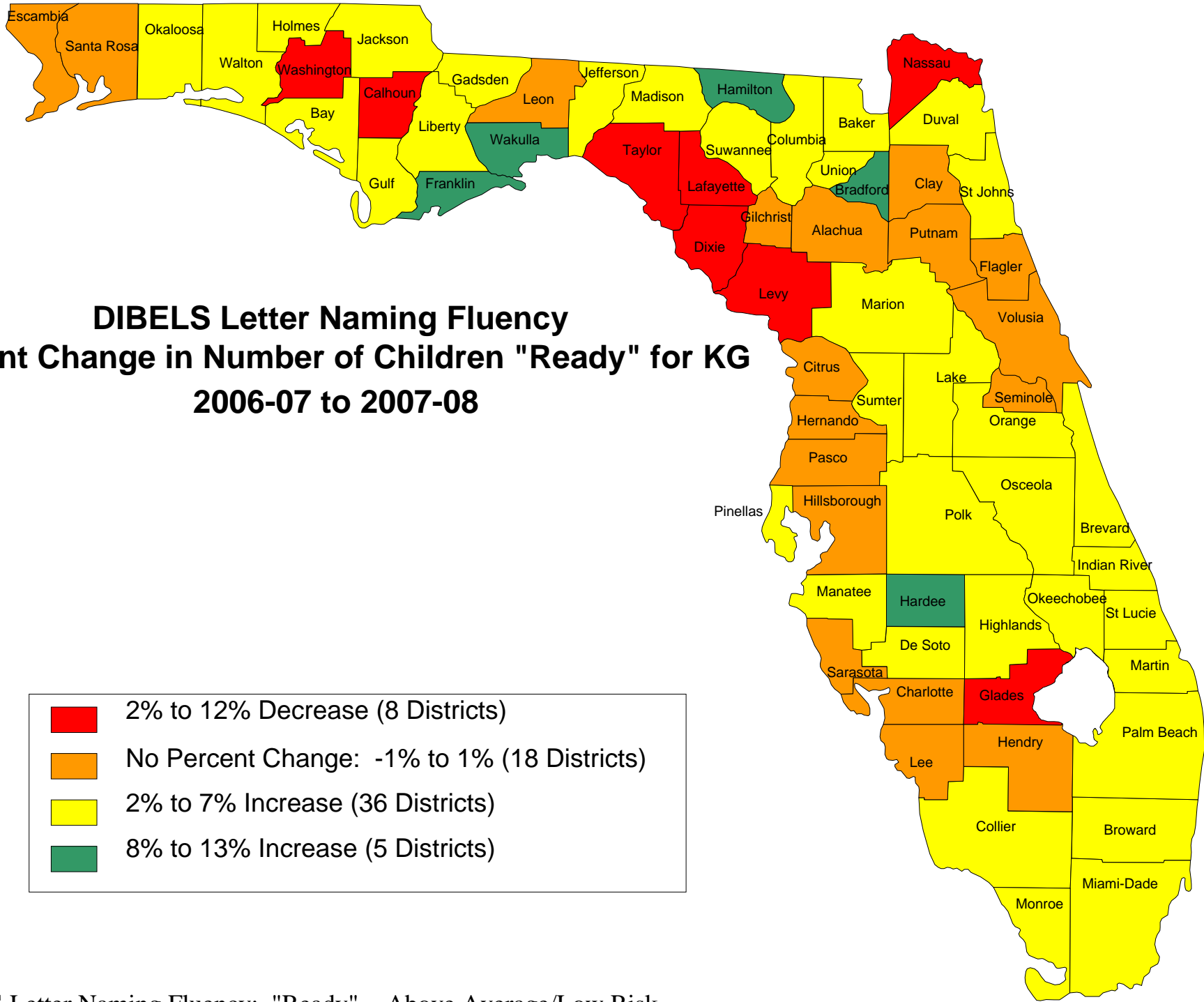
ECHOS: "Ready" = Consistently Demonstrating / Emerging/Progressing

**DIBELS Letter Naming Fluency Percent Change
2006-07 to 2007-08**

| DISTRICT | 2006-07 | | | 2007-08 | | | Percent Change Above Average / Low Risk | Percent Change Moderate Risk / High Risk |
|--------------|----------------------------------|-----------------------------------|--------------------------------------|----------------------------------|-----------------------------------|--------------------------------------|---|--|
| | Percent Above Average / Low Risk | Percent Moderate Risk / High Risk | Total Screened Letter Naming Fluency | Percent Above Average / Low Risk | Percent Moderate Risk / High Risk | Total Screened Letter Naming Fluency | | |
| ALACHUA | 74.48% | 25.52% | 2,026 | 75.37% | 24.63% | 1,811 | 1% | -1% |
| BAKER | 75.87% | 24.13% | 402 | 77.49% | 22.51% | 382 | 2% | -2% |
| BAY | 63.61% | 36.39% | 1,808 | 69.92% | 30.08% | 1,762 | 6% | -6% |
| BRADFORD | 55.56% | 44.44% | 261 | 66.67% | 33.33% | 252 | 11% | -11% |
| BREVARD | 72.53% | 27.47% | 4,688 | 74.51% | 25.49% | 4,842 | 2% | -2% |
| BROWARD | 78.40% | 21.60% | 17,168 | 80.65% | 19.35% | 16,521 | 2% | -2% |
| CALHOUN | 53.10% | 46.90% | 145 | 46.67% | 53.33% | 150 | -6% | 6% |
| CHARLOTTE | 76.29% | 23.71% | 1,050 | 75.26% | 24.74% | 1,047 | -1% | 1% |
| CITRUS | 69.85% | 30.15% | 1,005 | 68.37% | 31.63% | 961 | -1% | 1% |
| CLAY | 77.78% | 22.22% | 2,336 | 76.80% | 23.20% | 2,289 | -1% | 1% |
| COLLIER | 61.98% | 38.02% | 3,156 | 66.95% | 33.05% | 3,256 | 5% | -5% |
| COLUMBIA | 66.18% | 33.82% | 754 | 69.69% | 30.31% | 805 | 4% | -4% |
| DADE | 66.68% | 33.32% | 23,361 | 68.89% | 31.11% | 22,771 | 2% | -2% |
| DESOTO | 52.22% | 47.78% | 406 | 59.03% | 40.97% | 393 | 7% | -7% |
| DIXIE | 69.68% | 30.32% | 188 | 62.94% | 37.06% | 170 | -7% | 7% |
| DUVAL | 76.03% | 23.97% | 9,280 | 77.73% | 22.27% | 8,674 | 2% | -2% |
| ESCAMBIA | 66.11% | 33.89% | 2,927 | 67.45% | 32.55% | 2,833 | 1% | -1% |
| FLAGLER | 72.02% | 27.98% | 815 | 73.39% | 26.61% | 898 | 1% | -1% |
| FRANKLIN | 63.41% | 36.59% | 82 | 76.84% | 23.16% | 95 | 13% | -13% |
| GADSDEN | 70.84% | 29.16% | 535 | 75.83% | 24.17% | 484 | 5% | -5% |
| GILCHRIST | 76.14% | 23.86% | 176 | 77.40% | 22.60% | 177 | 1% | -1% |
| GLADES | 51.92% | 48.08% | 104 | 48.51% | 51.49% | 134 | -3% | 3% |
| GULF | 69.34% | 30.66% | 137 | 75.20% | 24.80% | 125 | 6% | -6% |
| HAMILTON | 57.14% | 42.86% | 147 | 64.86% | 35.14% | 148 | 8% | -8% |
| HARDEE | 40.00% | 60.00% | 375 | 48.95% | 51.05% | 382 | 9% | -9% |
| HENDRY | 50.35% | 49.65% | 564 | 50.94% | 49.06% | 530 | 1% | -1% |
| HERNANDO | 75.85% | 24.15% | 1,590 | 77.02% | 22.98% | 1,519 | 1% | -1% |
| HIGHLANDS | 62.22% | 37.78% | 929 | 63.99% | 36.01% | 858 | 2% | -2% |
| HILLSBOROUGH | 67.52% | 32.48% | 13,559 | 68.64% | 31.36% | 13,509 | 1% | -1% |
| HOLMES | 65.40% | 34.60% | 211 | 71.26% | 28.74% | 254 | 6% | -6% |
| INDIAN RIVER | 72.65% | 27.35% | 1,247 | 76.65% | 23.35% | 1,182 | 4% | -4% |
| JACKSON | 59.87% | 40.13% | 476 | 64.37% | 35.63% | 508 | 4% | -4% |
| JEFFERSON | 69.61% | 30.39% | 102 | 72.00% | 28.00% | 100 | 2% | -2% |
| LAFAYETTE | 85.58% | 14.42% | 104 | 73.49% | 26.51% | 83 | -12% | 12% |
| LAKE | 66.64% | 33.36% | 2,782 | 68.32% | 31.68% | 2,907 | 2% | -2% |
| LEE | 67.43% | 32.57% | 5,938 | 68.90% | 31.10% | 5,588 | 1% | -1% |
| LEON | 77.59% | 22.41% | 2,334 | 77.97% | 22.03% | 2,111 | 0% | 0% |
| LEVY | 60.23% | 39.77% | 440 | 56.04% | 43.96% | 439 | -4% | 4% |
| LIBERTY | 64.58% | 35.42% | 96 | 68.81% | 31.19% | 109 | 4% | -4% |
| MADISON | 64.82% | 35.18% | 199 | 71.36% | 28.64% | 199 | 7% | -7% |
| MANATEE | 60.19% | 39.81% | 3,102 | 62.76% | 37.24% | 3,099 | 3% | -3% |
| MARION | 69.88% | 30.12% | 2,978 | 72.94% | 27.06% | 2,927 | 3% | -3% |
| MARTIN | 70.38% | 29.62% | 1,202 | 74.72% | 25.28% | 1,143 | 4% | -4% |
| MONROE | 69.53% | 30.47% | 512 | 75.63% | 24.37% | 513 | 6% | -6% |
| NASSAU | 72.49% | 27.51% | 698 | 70.97% | 29.03% | 720 | -2% | 2% |
| OKALOOSA | 70.04% | 29.96% | 2,103 | 74.14% | 25.86% | 2,061 | 4% | -4% |
| OKEECHOBEE | 53.18% | 46.82% | 534 | 58.28% | 41.72% | 477 | 5% | -5% |
| ORANGE | 67.51% | 32.49% | 12,513 | 70.35% | 29.65% | 12,187 | 3% | -3% |

**DIBELS Letter Naming Fluency Percent Change
2006-07 to 2007-08**

| DISTRICT | 2006-07 | | | 2007-08 | | | Percent Change Above Average / Low Risk | Percent Change Moderate Risk / High Risk |
|-------------|----------------------------------|-----------------------------------|--------------------------------------|----------------------------------|-----------------------------------|--------------------------------------|---|--|
| | Percent Above Average / Low Risk | Percent Moderate Risk / High Risk | Total Screened Letter Naming Fluency | Percent Above Average / Low Risk | Percent Moderate Risk / High Risk | Total Screened Letter Naming Fluency | | |
| OSCEOLA | 60.73% | 39.27% | 3,377 | 63.58% | 36.42% | 3,182 | 3% | -3% |
| PALM BEACH | 71.82% | 28.18% | 11,548 | 74.36% | 25.64% | 11,320 | 3% | -3% |
| PASCO | 70.01% | 29.99% | 4,495 | 70.94% | 29.06% | 4,539 | 1% | -1% |
| PINELLAS | 71.48% | 28.52% | 7,202 | 73.12% | 26.88% | 6,995 | 2% | -2% |
| POLK | 56.86% | 43.14% | 6,723 | 61.78% | 38.22% | 6,818 | 5% | -5% |
| PUTNAM | 59.78% | 40.22% | 900 | 61.21% | 38.79% | 861 | 1% | -1% |
| SAINT JOHNS | 81.93% | 18.07% | 1,760 | 85.49% | 14.51% | 1,874 | 4% | -4% |
| SAINT LUCIE | 66.84% | 33.16% | 2,874 | 71.74% | 28.26% | 2,707 | 5% | -5% |
| SANTA ROSA | 74.00% | 26.00% | 1,646 | 75.39% | 24.61% | 1,613 | 1% | -1% |
| SARASOTA | 70.37% | 29.63% | 2,761 | 71.75% | 28.25% | 2,733 | 1% | -1% |
| SEMINOLE | 77.69% | 22.31% | 4,276 | 77.68% | 22.32% | 3,970 | 0% | 0% |
| SUMTER | 69.37% | 30.63% | 395 | 72.63% | 27.37% | 537 | 3% | -3% |
| SUWANNEE | 65.28% | 34.72% | 432 | 69.75% | 30.25% | 433 | 4% | -4% |
| TAYLOR | 82.85% | 17.15% | 239 | 73.66% | 26.34% | 243 | -9% | 9% |
| UNION | 64.67% | 35.33% | 167 | 67.53% | 32.47% | 154 | 3% | -3% |
| VOLUSIA | 70.77% | 29.23% | 4,485 | 72.05% | 27.95% | 4,147 | 1% | -1% |
| WAKULLA | 63.42% | 36.58% | 257 | 75.08% | 24.92% | 317 | 12% | -12% |
| WALTON | 59.88% | 40.12% | 521 | 62.30% | 37.70% | 549 | 2% | -2% |
| WASHINGTON | 60.00% | 40.00% | 230 | 50.63% | 49.37% | 239 | -9% | 9% |
| STATE | 70.00% | 30.00% | 181,833 | 72.00% | 28.00% | 177,616 | 2% | -2% |



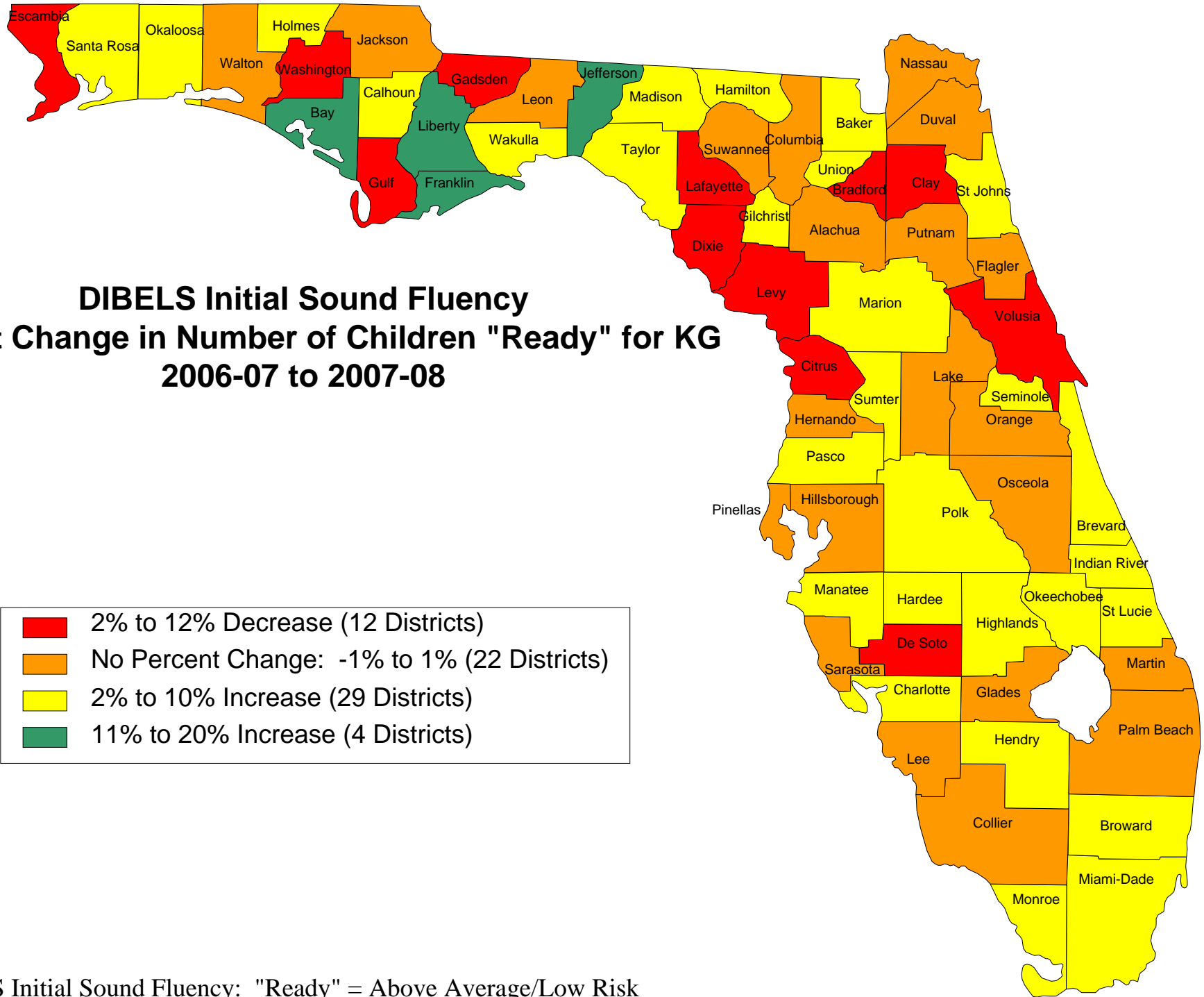
DIBELS Letter Naming Fluency: "Ready" = Above Average/Low Risk

**DIBELS Initial Sound Percent Change
2006-07 to 2007-08**

| DISTRICT | 2006-07 | | | 2007-08 | | | Percent Change Above Average / Low Risk | Percent Change Moderate Risk / High Risk |
|--------------|----------------------------------|-----------------------------------|--------------------------------------|----------------------------------|-----------------------------------|--------------------------------------|---|--|
| | Percent Above Average / Low Risk | Percent Moderate Risk / High Risk | Total Screened Initial Sound Fluency | Percent Above Average / Low Risk | Percent Moderate Risk / High Risk | Total Screened Initial Sound Fluency | | |
| ALACHUA | 69.03% | 30.97% | 2,002 | 69.22% | 30.78% | 1,777 | 0% | 0% |
| BAKER | 63.43% | 36.57% | 402 | 68.59% | 31.41% | 382 | 5% | -5% |
| BAY | 56.05% | 43.95% | 1,761 | 67.21% | 32.79% | 1,717 | 11% | -11% |
| BRADFORD | 68.99% | 31.01% | 258 | 63.10% | 36.90% | 252 | -6% | 6% |
| BREVARD | 68.33% | 31.67% | 4,641 | 70.38% | 29.62% | 4,767 | 2% | -2% |
| BROWARD | 64.98% | 35.02% | 16,542 | 66.95% | 33.05% | 16,109 | 2% | -2% |
| CALHOUN | 60.69% | 39.31% | 145 | 67.57% | 32.43% | 148 | 7% | -7% |
| CHARLOTTE | 65.25% | 34.75% | 1,036 | 72.32% | 27.68% | 1,037 | 7% | -7% |
| CITRUS | 70.39% | 29.61% | 986 | 66.06% | 33.94% | 934 | -4% | 4% |
| CLAY | 75.85% | 24.15% | 2,323 | 71.87% | 28.13% | 2,254 | -4% | 4% |
| COLLIER | 60.60% | 39.40% | 2,962 | 60.92% | 39.08% | 3,076 | 0% | 0% |
| COLUMBIA | 61.33% | 38.67% | 750 | 62.53% | 37.47% | 790 | 1% | -1% |
| DADE | 55.66% | 44.34% | 22,608 | 59.14% | 40.86% | 21,901 | 3% | -3% |
| DESOTO | 58.14% | 41.86% | 387 | 51.83% | 48.17% | 382 | -6% | 6% |
| DIXIE | 63.83% | 36.17% | 188 | 52.98% | 47.02% | 168 | -11% | 11% |
| DUVAL | 63.90% | 36.10% | 9,051 | 64.55% | 35.45% | 8,508 | 1% | -1% |
| ESCAMBIA | 70.27% | 29.73% | 2,910 | 67.95% | 32.05% | 2,718 | -2% | 2% |
| FLAGLER | 66.58% | 33.42% | 784 | 66.78% | 33.22% | 888 | 0% | 0% |
| FRANKLIN | 48.15% | 51.85% | 81 | 68.42% | 31.58% | 95 | 20% | -20% |
| GADSDEN | 61.68% | 38.32% | 394 | 58.99% | 41.01% | 434 | -3% | 3% |
| GILCHRIST | 62.21% | 37.79% | 172 | 65.32% | 34.68% | 173 | 3% | -3% |
| GLADES | 53.85% | 46.15% | 104 | 53.03% | 46.97% | 132 | -1% | 1% |
| GULF | 81.75% | 18.25% | 137 | 76.00% | 24.00% | 125 | -6% | 6% |
| HAMILTON | 53.06% | 46.94% | 147 | 56.76% | 43.24% | 148 | 4% | -4% |
| HARDEE | 46.83% | 53.17% | 363 | 51.37% | 48.63% | 366 | 5% | -5% |
| HENDRY | 50.44% | 49.56% | 563 | 53.88% | 46.12% | 529 | 3% | -3% |
| HERNANDO | 66.25% | 33.75% | 1,588 | 65.42% | 34.58% | 1,518 | -1% | 1% |
| HIGHLANDS | 60.55% | 39.45% | 910 | 63.82% | 36.18% | 832 | 3% | -3% |
| HILLSBOROUGH | 63.15% | 36.85% | 13,197 | 64.22% | 35.78% | 13,175 | 1% | -1% |
| HOLMES | 60.19% | 39.81% | 211 | 66.27% | 33.73% | 252 | 6% | -6% |
| INDIAN RIVER | 66.55% | 33.45% | 1,106 | 69.32% | 30.68% | 1,095 | 3% | -3% |
| JACKSON | 65.02% | 34.98% | 466 | 66.21% | 33.79% | 506 | 1% | -1% |
| JEFFERSON | 61.62% | 38.38% | 99 | 73.74% | 26.26% | 99 | 12% | -12% |
| LAFAYETTE | 83.70% | 16.30% | 92 | 73.33% | 26.67% | 75 | -10% | 10% |
| LAKE | 65.67% | 34.33% | 2,721 | 65.71% | 34.29% | 2,835 | 0% | 0% |
| LEE | 63.02% | 36.98% | 5,714 | 63.67% | 36.33% | 5,375 | 1% | -1% |
| LEON | 69.51% | 30.49% | 2,299 | 70.11% | 29.89% | 2,074 | 1% | -1% |
| LEVY | 63.66% | 36.34% | 421 | 61.93% | 38.07% | 394 | -2% | 2% |
| LIBERTY | 54.74% | 45.26% | 95 | 70.64% | 29.36% | 109 | 16% | -16% |
| MADISON | 57.79% | 42.21% | 199 | 61.73% | 38.27% | 196 | 4% | -4% |
| MANATEE | 58.95% | 41.05% | 3,016 | 64.28% | 35.72% | 2,956 | 5% | -5% |
| MARION | 60.63% | 39.37% | 2,969 | 62.44% | 37.56% | 2,894 | 2% | -2% |
| MARTIN | 66.46% | 33.54% | 1,157 | 65.37% | 34.63% | 1,106 | -1% | 1% |
| MONROE | 65.05% | 34.95% | 495 | 69.64% | 30.36% | 504 | 5% | -5% |
| NASSAU | 62.36% | 37.64% | 696 | 61.79% | 38.21% | 717 | -1% | 1% |
| OKALOOSA | 66.92% | 33.08% | 2,074 | 69.60% | 30.40% | 2,026 | 3% | -3% |
| OKEECHOBEE | 46.80% | 53.20% | 532 | 50.32% | 49.68% | 465 | 4% | -4% |
| ORANGE | 65.28% | 34.72% | 12,006 | 65.09% | 34.91% | 11,974 | 0% | 0% |

**DIBELS Initial Sound Percent Change
2006-07 to 2007-08**

| DISTRICT | 2006-07 | | | 2007-08 | | | Percent Change Above Average / Low Risk | Percent Change Moderate Risk / High Risk |
|-------------|----------------------------------|-----------------------------------|--------------------------------------|----------------------------------|-----------------------------------|--------------------------------------|---|--|
| | Percent Above Average / Low Risk | Percent Moderate Risk / High Risk | Total Screened Initial Sound Fluency | Percent Above Average / Low Risk | Percent Moderate Risk / High Risk | Total Screened Initial Sound Fluency | | |
| OSCEOLA | 54.72% | 45.28% | 3,286 | 54.00% | 46.00% | 3,048 | -1% | 1% |
| PALM BEACH | 64.62% | 35.38% | 11,159 | 64.01% | 35.99% | 10,931 | -1% | 1% |
| PASCO | 66.30% | 33.70% | 4,427 | 67.97% | 32.03% | 4,492 | 2% | -2% |
| PINELLAS | 66.78% | 33.22% | 6,803 | 66.98% | 33.02% | 6,736 | 0% | 0% |
| POLK | 58.70% | 41.30% | 6,594 | 60.44% | 39.56% | 6,698 | 2% | -2% |
| PUTNAM | 62.76% | 37.24% | 897 | 64.23% | 35.77% | 861 | 1% | -1% |
| SAINT JOHNS | 73.05% | 26.95% | 1,722 | 77.75% | 22.25% | 1,847 | 5% | -5% |
| SAINT LUCIE | 62.03% | 37.97% | 2,715 | 66.00% | 34.00% | 2,515 | 4% | -4% |
| SANTA ROSA | 67.22% | 32.78% | 1,614 | 73.27% | 26.73% | 1,564 | 6% | -6% |
| SARASOTA | 68.21% | 31.79% | 2,639 | 69.33% | 30.67% | 2,674 | 1% | -1% |
| SEMINOLE | 69.31% | 30.69% | 4,275 | 73.13% | 26.87% | 3,938 | 4% | -4% |
| SUMTER | 68.10% | 31.90% | 395 | 72.25% | 27.75% | 537 | 4% | -4% |
| SUWANNEE | 61.48% | 38.52% | 431 | 62.33% | 37.67% | 430 | 1% | -1% |
| TAYLOR | 72.27% | 27.73% | 238 | 75.72% | 24.28% | 243 | 3% | -3% |
| UNION | 70.66% | 29.34% | 167 | 75.16% | 24.84% | 153 | 5% | -5% |
| VOLUSIA | 65.55% | 34.45% | 4,415 | 64.02% | 35.98% | 4,105 | -2% | 2% |
| WAKULLA | 64.06% | 35.94% | 256 | 68.47% | 31.53% | 314 | 4% | -4% |
| WALTON | 69.86% | 30.14% | 501 | 69.98% | 30.02% | 543 | 0% | 0% |
| WASHINGTON | 64.41% | 35.59% | 222 | 52.10% | 47.90% | 238 | -12% | 12% |
| STATE | 63.00% | 37.00% | 176,516 | 65.00% | 35.00% | 172,854 | 2% | -2% |



DIBELS Initial Sound Fluency: "Ready" = Above Average/Low Risk