

**THE SCHOOL BOARD OF BROWARD COUNTY, FLORIDA  
OFFICE OF THE SUPERINTENDENT**

**DR. FRANK TILL  
SUPERINTENDENT OF SCHOOLS**

**Telephone: (954) 765-6271**

**Facsimile: (954) 760-7483**

**Approved memorandum with signatures is on file.**

July 10, 2003

**TO: School Board Members**

**FROM: Katherine Blasik, Ph.D., Assistant Superintendent  
Office of Research and Evaluation**

**VIA: Frank Till  
Superintendent of Schools**

**SUBJECT: 2003 PRELIMINARY SAT/NATIONAL MERIT SCHOLARSHIP  
QUALIFYING TEST RESULTS**

This is the third year that Broward has participated in the partnership between the College Board and the Florida Department of Education (DOE) utilizing the Preliminary SAT/National Merit Scholarship Qualifying Test (PSAT/NMSQT) to identify student readiness for college level work. Not only can results be used as an important achievement indicator of Honors and Advanced Placement study, but the data provided can assist staff in identifying areas where additional attention is needed in order to move students to college level coursework.

The 2003 PSAT Report is attached to this memorandum. The report presents data regarding the 2001, 2002, and 2003 administrations of the PSAT for both 10<sup>th</sup> and 11<sup>th</sup> grade participants as provided by the vendor, College Board. Broward has focused efforts on increasing student participation in high rigor assessments. Recently released results demonstrate that school staffs and parents have supported this effort, resulting in an increase in student participation in the PSAT/NMSQT at both 10<sup>th</sup> and 11<sup>th</sup> grade levels, as well as across major ethnic groups. Highlights of the report indicate:

**At Grade 10, participation rose to 7,430 (16% increase) in one year and eclipsed the districtwide Grade 10 enrollment increase of nine percent (1,248) this year. At Grade 11, participation rose to 4,499 (5% increase) this year, but lagged behind the districtwide enrollment increase of seven percent.**

**When reviewing the data by ethnicity, dramatic increases in participation rates are noted. Fourteen schools increased Grade 10 Black student participation this year with remarkable increases at Deerfield Beach (38 to 103, 171%), South Broward (12 to 91, 658%) and Stranahan (122 to 207, 70%).**

PSAT/NMSQT

July 10, 2003

Page 2

Grade 10 mean scores matched Writing scores from the previous year but were down in Verbal and Mathematics; however, Broward students surpassed the State in all three areas this year. At Grade 11, Broward students lagged behind the State in all areas.

**Black and Hispanic Grade 10 students this year earned mean scores greater than mean scores in 2001 in all areas. At Grade 11, Black students also posted higher mean scores in all areas over mean scores in 2001.**

Three charter schools, City of Coral Springs, North Lauderdale Academy and Pembroke Pines Charter High School, participated in PSAT/NMSQT testing this year.

Broward's commitment to providing broader educational opportunities, which provide students with experience and knowledge needed for success in college-level coursework, is evident in the continued increase in PSAT/NMSQT participation. School staff will use PSAT results as an additional source of information to identify students for Honors or Advanced Placement courses for the coming school year. Area Directors and Principals will examine school participation rates, particularly at Grades 10 and 11. While the proportion of Grade 10 student participation in PSAT/NMSQT has increased each year from 2001 (37%) to the present (48%), there remains a need for additional efforts to ensure all Grade 10 students recognize the benefits of PSAT testing.

If you have any questions regarding this report, please contact **me at 954-760-3242 or Anne Dilgen, Director, Student Assessment at 754-321-4250.**

FT/KAB/AD/DG:dg

Attachment

cc: Senior Management  
Area Directors  
Diane Carr, Executive Director, Core Curriculum  
Frank Vodolo, Executive Director, Educational Programs  
Cynthia Park, Director, Advanced Academic Programs  
High School Principals

# THE SCHOOL BOARD OF BROWARD COUNTY, FLORIDA



## Office of Research and Evaluation Student Assessment

### 2003 PRELIMINARY SAT/NATIONAL MERIT SCHOLARSHIP QUALIFYING TEST

The 2002-2003 school year is the third year of a partnership between the College Board and the Florida Department of Education (DOE) to help improve student academic performance and prepare for a college education or a rewarding career (State of Florida, 2003). Beginning in 2000-2001, Florida's Specific Appropriation 107, allocated \$1.6 million statewide for administration of a preliminary college entrance examination to all tenth grade students. Broward, after a review of available preliminary college entrance examinations, selected the College Board's Preliminary SAT/National Merit Scholarship Qualifying Test (PSAT/NMSQT) for administration to tenth grade students. As directed by the state, student participation in districtwide PSAT/NMSQT testing was voluntary. Furthermore, a student may choose to take an examination not selected by the district at his/her expense.

This report presents data regarding the 2001, 2002, and 2003 administrations of the PSAT/NMSQT for both 10<sup>th</sup> and 11<sup>th</sup> grade participants as provided by the vendor, College Board.

#### **Test Description**

The PSAT/NMSQT measures verbal and mathematical reasoning abilities that are important for academic performance in college. The PSAT/NMSQT includes two verbal sections consisting of a total of 52 questions, two mathematics sections with a total of 40 questions and a writing skills section with 39 questions. Each verbal and mathematics section is 25 minutes, while the writing skills section is 30 minutes. The full examination requires two hours and ten minutes for administration. The test focuses on students' ability to reason with facts and concepts, rather than the ability to recall and recite information, while assessing knowledge and skills that students develop through course work in English, mathematics, science, social studies, foreign languages, and fine arts, as well as through experiences outside the classroom.

In Grade 10, students gain familiarity with the format of the PSAT/NMSQT and gain experience for the SAT. The examination is intended to permit an opportunity for students to practice for SAT Program tests by providing questions similar to those on that assessment. By taking the PSAT prior to the SAT, students become cognizant of the skills tested on the SAT and other college entrance examinations.

For students in Grade 11, the PSAT/NMSQT is a qualifying examination for scholarship and recognition programs including the National Merit Scholarship Competition, National Achievement Scholarships for Outstanding Negro Students, and the National Hispanic Scholar

Recognition Program. Of the more than one million National Merit Scholarship Corporation (NMSC) program entrants, about 55,000 students will earn 2002 PSAT/NMSQT scores high enough to qualify them for recognition. These students will be notified of their standing through their high schools in September 2003. Students who qualify to continue in the competitions for scholarships to be offered in 2004 then must meet academic and other requirements specified by NMSC in order to be considered for awards (National Merit Program, 2003).

Of the more than two million students who take the PSAT/NMSQT, most are high school juniors (College Board, 2003). Nearly all students nationwide who take the test indicate they plan to attend college. The PSAT/NMSQT gives the students the opportunity to participate in the Student Search Service used by colleges to contact students directly with information about their programs and offerings.

The PSAT/NMSQT is administered twice during the month of October each year. Schools may elect either the Tuesday or Saturday scheduled test dates to administer the test.

### **PSAT/NMSQT Assessment Results**

College Board mails each examinee a PSAT/NMSQT Student Score Report in December or January, which offers skills assessment that students can use to identify their levels of proficiency in each of the reasoning skill areas and then work on improving them before entering college, or taking the SAT. The reverse side of the Score Report contains interpretive and college planning information. Each student receives three scores (Verbal, Mathematics, and Writing Skills) as well as two estimated scores on the SAT I: Reasoning Test (Verbal and Mathematics), and one on the SAT II: Writing Test.

In the spring of each year, College Board sends to each school participating in PSAT/NMSQT testing additional reports and materials. The PSAT/NMSQT Summary of Answers includes three different ways for school staff to analyze their students' performance. College Board staff suggests that the Summary of Answers keeps the focus on the students' skills, not their scores. Accompanying the Summary of Answers is the *Guide to the PSAT/NMSQT Summary of Answers*, which contains suggestions about understanding and using information from the report.

Each participating school also receives reports to assist in identifying academically promising young people to participate in Advanced Placement (AP) courses. According to College Board, studies have shown that student performance on the PSAT/NMSQT can be useful in identifying students who may be successful in AP courses. These reports, according to College Board, are not intended to be used as the only criteria for selection of students to enter an AP course, nor are they to be used to deny student access to these high rigor courses. The reports should be used in conjunction with the following to identify more students who can potentially benefit from AP courses and be successful in those courses:

- Self-nomination
- Teacher recommendations
- Previous courses completed
- Grades in relevant previous high school courses
- Discussions with students and their parents
- Scores on achievement tests

Accompanying these reports, each participating school receives a copy of College Board's *Using the PSAT/NMSQT and Course Grades in Predicting Success in the Advanced Placement Program*.

As indicated in the PSAT/NMSQT Summary of Answers, students who take the PSAT/MNSQT are assumed to be planning to continue their education beyond high school with the Summary of Answers report referring to participants as college-bound students. Comparisons of performance on the test relate to the national group of college-bound students, a self-selected group of greater academic ability, rather than all high school students.

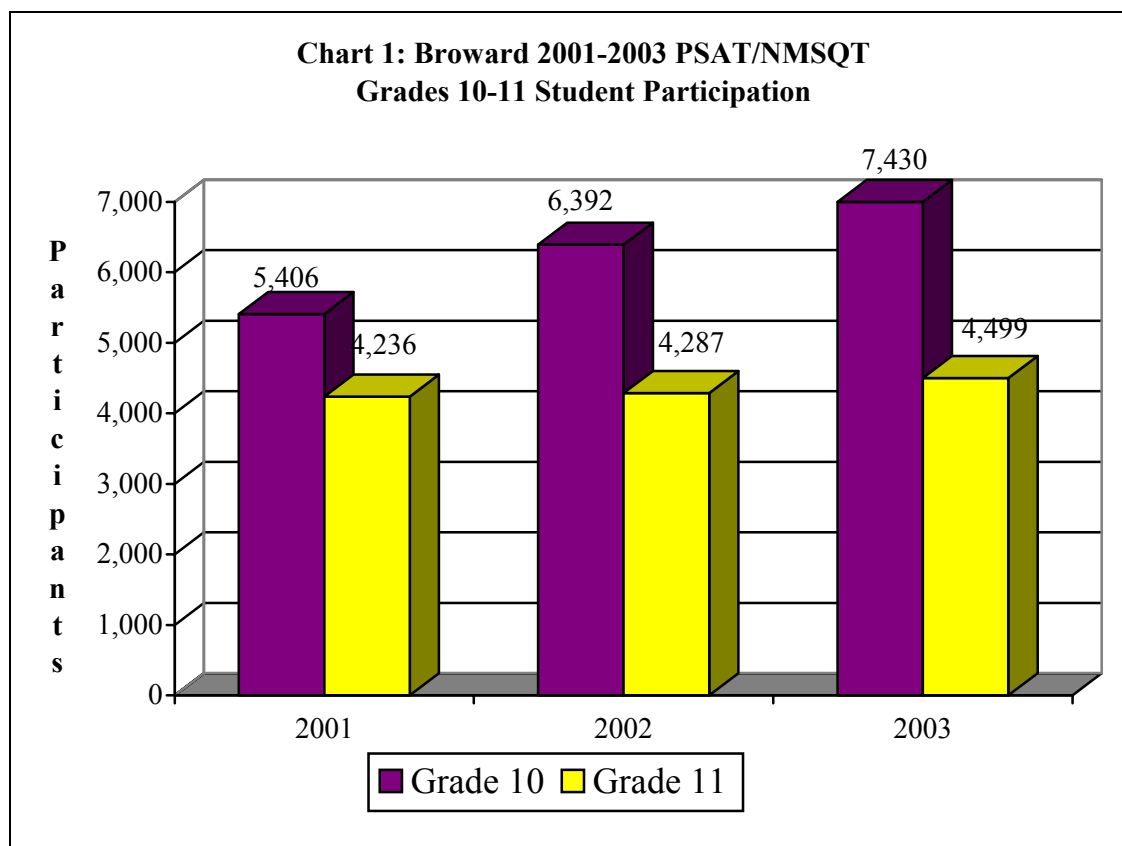
### **Participation Rates**

The test results included in this report are for Broward students who participated in the PSAT/NMSQT administration over the past three years of 2001 to 2003. The rates are disaggregated for Grade 10 and Grade 11 participants.

As displayed in Table 1 and illustrated in Chart 1, 10<sup>th</sup> grade participation on the PSAT/NMSQT in 2003 (7,430) has increased by 16 percent (1,038) over the previous year (6,392). This participation *increase* from 2002 to 2003 surpassed the districtwide 10<sup>th</sup> grade enrollment *increase* of nine percent (1,248) during that same time-frame.

In reviewing 11<sup>th</sup> grade participation rates for 2003, the number of juniors participating in PSAT/NMSQT testing *increased* by five percent (212) compared to the district Grade 11 enrollment *increase* of seven percent (1,026).

<b>Table 1: Broward Enrollment/PSAT/NMSQT Participation 2001-2003</b>				
Year	Enrollment	Percent Change	Participants	Percent Change
<b>Grade 10</b>				
2001	14,355		5,406	
2002	14,275	- <1%	6,392	+ 18%
2003	15,523	+ 9%	7,430	+ 16%
<b>Grade 11</b>				
2001	14,633		4,236	
2002	14,503	- <1%	4,287	+ 1%
2003	15,529	+ 7%	4,499	+ 5%



### Mean Scale Scores

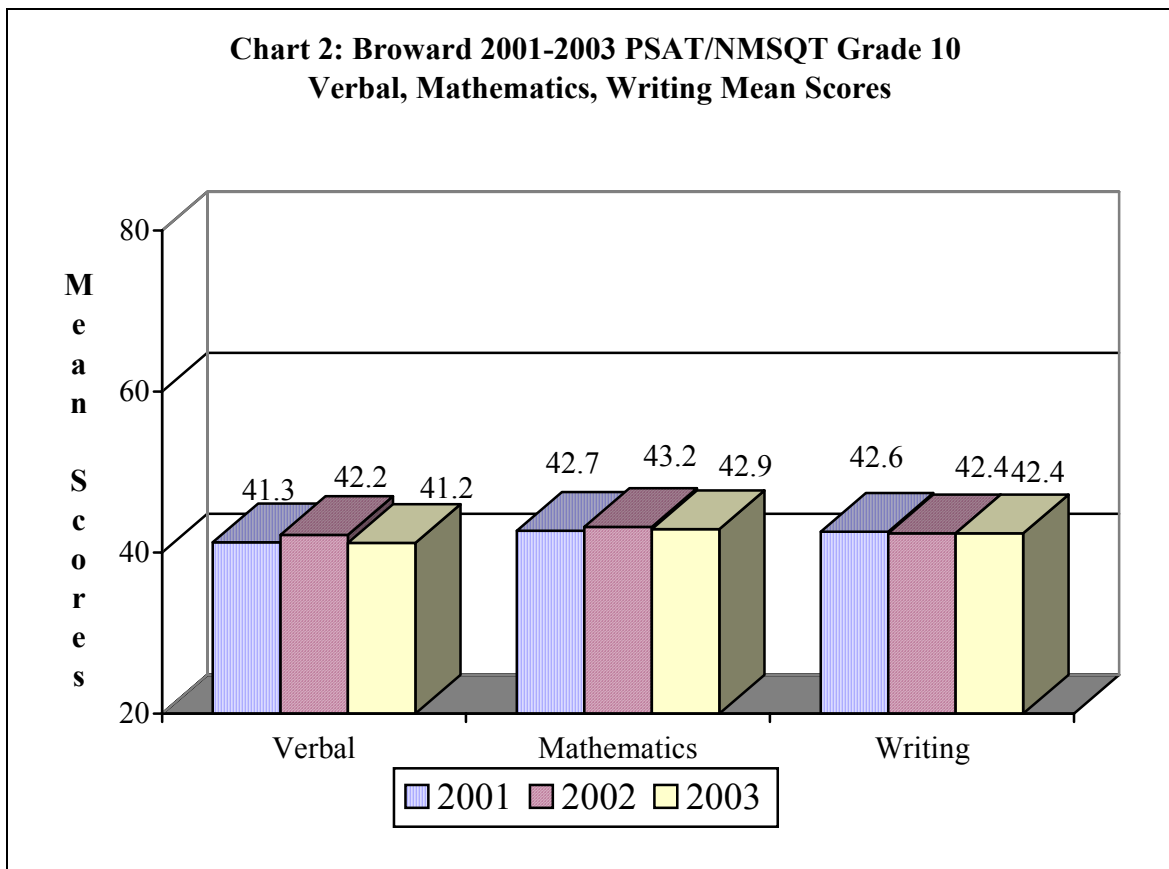
Table 2 provides three years of National, Florida and Broward data. The College Board reports national and state mean scale scores for only college-bound students. It should be noted that Broward mean scores are based on *all* students participating in the PSAT/NMSQT administration.

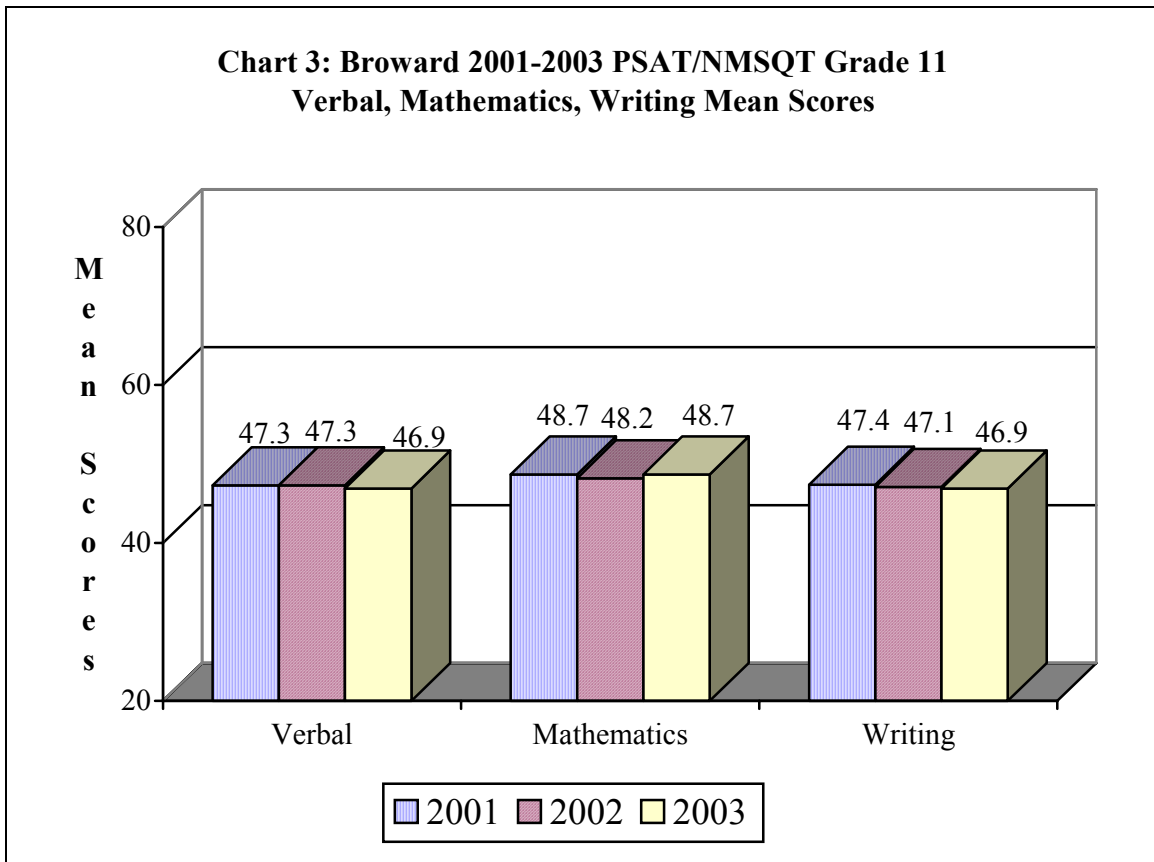
At Grade 10, mean scores across the Nation reflect a negative trendline for the three-year period displayed in Table 2. Writing mean scores across the Nation were down in 2003 from the previous year, however Mathematics average scores remained stable in 2003. As indicated in the table, mean scores for Grade 10 participants in the three areas of Verbal, Mathematics and Writing across Florida were down in 2003 compared to the previous year. While mean scores for Broward's Grade 10 participants were down this year in Verbal and Mathematics, Writing scores were stable in Broward for 2002-2003. This year, Broward's mean scores exceeded the averages across Florida in Verbal (41.2 vs. 40.7), Mathematics (42.9 vs. 41.9) and Writing (42.4 vs. 42.2).

Once again, in reviewing the data, note must be made regarding special educational initiatives made in Florida, which are not evidenced nationally. Only three states (Florida, Georgia and South Carolina) have initiatives that provide such testing at no cost to the student. Therefore, comparisons of district and national results for 2001 must be made with caution, as the majority of states do not fund PSAT/NMSQT testing which may limit the range of students who participate in the assessment at the early point of Grade 10.

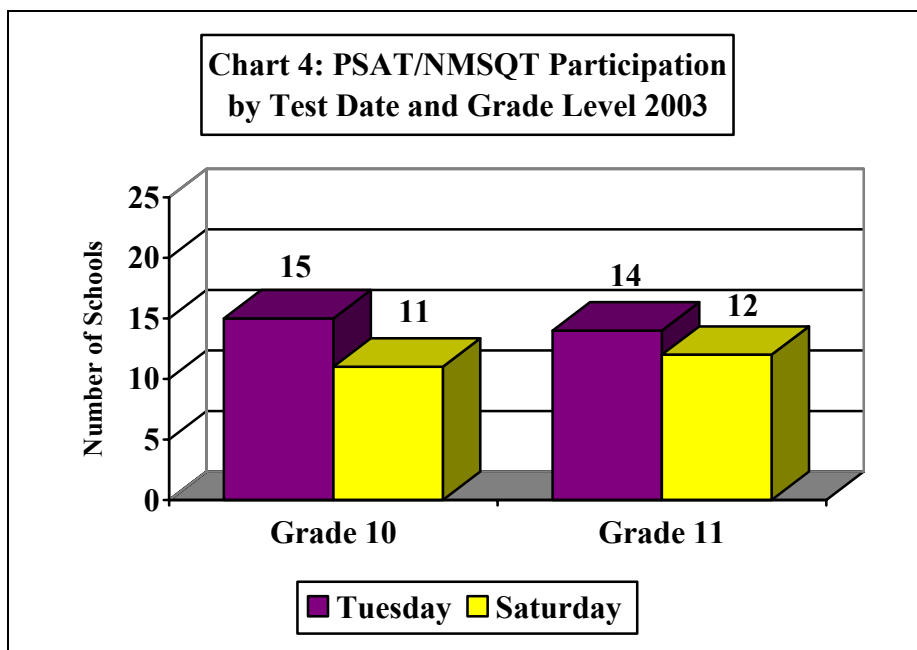
As seen in Table 2, a clear pattern is not noted when examining PSAT/NMSQT mean scores during the three-year period. Despite a small increase in Broward’s mean Mathematics scores this year (48.7) over the previous year (48.2), Broward’s Grade 11 mean scores in all areas were below the averages in Florida. It is not unexpected that Grade 11 scores are higher than Grade 10 students as Grade 10 students are most likely to have no prior experience with the PSAT/NMSQT.

<b>Table 2: Nation, Florida and Broward PSAT/NMSQT Mean Scores 2001-2003</b>									
	Verbal			Mathematics			Writing		
	2001	2002	2003	2001	2002	2003	2001	2002	2003
<b>Grade 10</b>									
Nation	45.2	45.1	44.4	45.9	45.5	45.5	46.2	46.2	45.9
Florida	40.7	41.6	40.7	41.5	42.0	41.9	42.2	42.5	42.2
Broward	41.3	42.2	41.2	42.7	43.2	42.9	42.6	42.4	42.4
<b>Grade 11</b>									
Nation	48.3	48.3	48.0	49.4	49.0	49.2	48.7	48.9	48.8
Florida	48.1	48.8	48.8	48.7	48.8	49.5	48.1	49.1	49.0
Broward	47.3	47.3	46.9	48.7	48.2	48.7	47.4	47.1	46.9





As indicated earlier, the PSAT/NMSQT is administered twice during the month of October each year and schools may elect either the Tuesday or Saturday scheduled test dates to administer the test. As depicted in Chart 4, of 26 Broward high schools participating in PSAT/NMSQT this year, 14 (54%) administered the test to both Grade 10 and 11 students on the Tuesday test date and 11 (42%) schools administered the test to both Grade 10 and 11 students on the Saturday test date. One school (4%) opted to test Grade 10 students on Tuesday and Grade 11 on Saturday.





**District Mean Scores by Ethnicity**

Broward Grade 10-11 mean scores are displayed by ethnicity in Table 3. Grade 10 Black students posted slightly lower mean scores in all areas in 2003 from 2002. Grade 10 Hispanic student Writing mean scores rose this year while mean scores in Verbal and Mathematics slipped this year. While White student mean scores in Mathematics and Writing were up in 2003, Grade 10 White student Verbal mean scores remained stable.

Mixed results are also shown for Grade 11 students in Table 3. While Black student mean Verbal scores were down in 2003 from the previous year, Black student mean scores in Mathematics and Writing improved this year. Writing mean scores for Grade 11 Hispanic students increased this year while Verbal and Mathematics scores slipped. Grade 11 White student mean scores slipped in all areas from 2002 to 2003. In addition, a negative trendline is seen for Grade 11 mean Mathematics scores over the three-year period from 2001 to 2003.

<b>Table 3: Broward PSAT/NMSQT Mean Score by Ethnicity 2001-2003</b>									
	<b>Black</b>			<b>Hispanic</b>			<b>White</b>		
<b>Grade 10</b>									
<b>Year</b>	<b>V</b>	<b>M</b>	<b>W</b>	<b>V</b>	<b>M</b>	<b>W</b>	<b>V</b>	<b>M</b>	<b>W</b>
2001	35.9	37.2	38.9	40.2	41.4	41.8	46.4	47.6	46.2
2002	38.2	38.3	39.2	41.6	42.5	41.8	45.9	47.2	45.3
2003	36.6	38.1	39.0	40.6	42.4	42.1	45.9	47.6	45.9
<b>Grade 11</b>									
2001	41.8	42.6	42.7	46.2	47.3	46.8	50.4	51.9	50.0
2002	42.5	42.2	42.9	46.9	47.4	45.9	50.4	51.5	50.0
2003	42.2	43.4	43.0	45.7	47.3	46.2	49.6	51.4	49.2

Table 4 illustrates PSAT/NMSQT mean scores for Grades 10 and 11 by gender. At Grade 10 mean scores slipped in all areas except Female Writing scores which matched the previous year's results. At Grade 11, Verbal scores declined this year for both Females and Males, as did Writing scores for Males while all other areas rose or remained stable.

<b>Table 4: Grade 10 Broward PSAT/NMSQT Mean Score by Gender 2001-2003</b>						
	<b>Female</b>			<b>Male</b>		
<b>Year</b>	<b>V</b>	<b>M</b>	<b>W</b>	<b>V</b>	<b>M</b>	<b>W</b>
<b>Grade 10</b>						
2001	41.3	41.9	43.0	41.2	43.9	42.0
2002	42.0	42.0	42.7	42.6	44.8	42.1
2003	41.0	41.8	42.7	41.5	44.5	42.0
<b>Grade 11</b>						
2001	46.5	46.8	47.1	48.5	51.5	47.8
2002	46.8	46.7	47.1	48.1	50.6	47.2
2003	46.4	46.9	47.1	47.7	51.0	46.7

### **School Participation by Ethnicity**

Table 5 provides three years of data – 2001 to 2003 – regarding total participation and by ethnicity of Black, Hispanic and White for Grade 10 participants. As displayed in the table, of Broward high schools with two consecutive years of PSAT/NMSQT participation, over two-thirds (17, 68%) of 25 high schools testing posted increased participation rates this year over the previous year. South Broward High reported a significant increase (378%) in Grade 10 student participation in PSAT/NMSQT, up from 79 students in 2002 to 378 this year. South Broward staff attributed the increase to switching Grade 10 testing from Saturday to Tuesday and requiring participation for all Grade 10 students.

An increase in minority participation is also noted in Table 5. Fourteen schools increased Grade 10 Black student participation this year with remarkable increases at Deerfield Beach (38 to 103, 171%), South Broward (12 to 91, 658%) and Stranahan (122 to 207, 70%). Fifteen schools increased Grade 10 Hispanic student participation with the most notable increases at Coconut Creek High (35 to 83, 137%), Deerfield Beach High (18 to 32, 78%) and Fort Lauderdale High (16 to 29, 81%). In 2003 school staff continued to advertise the availability of the PSAT/NMSQT, at no cost to Grade 10 students, however only interested Grade 10 students participated.

<b>Table 5: PSAT/NMSQT Grade 10 Participation Results by School 2001-2003</b>												
<b>High School</b>	<b>Total # Part. 2001</b>	<b>Total # Part. 2002</b>	<b>Total # Part. 2003</b>	<b>Total # Black Part. 2001</b>	<b>Total # Black Part. 2002</b>	<b>Total # Black Part. 2003</b>	<b>Total # Hisp. Part. 2001</b>	<b>Total # Hisp. Part. 2002</b>	<b>Total # Hisp. Part. 2003</b>	<b>Total # White Part. 2001</b>	<b>Total # White Part. 2002</b>	<b>Total # White Part. 2003</b>
Blanche Ely	226	282	187	142	178	123	19	23	19	17	21	20
Boyd Anderson	279	368	455	158	259	327	18	27	24	31	29	27
Coconut Creek	330	265	356	117	91	123	66	35	83	102	83	101
Cooper City	167	175	227	4	0	0	18	21	23	131	131	181
Coral Springs	212	199	234	25	20	31	21	34	33	140	128	137
Cypress Bay*			412			15			143			223
Deerfield Beach	518	170	253	188	38	103	76	18	32	167	62	72
Dillard	239	313	247	188	248	130	15	15	10	18	21	20
Flanagan, Charles W.	319	399	506	48	70	88	115	116	186	103	130	148
Fort Lauderdale	97	232	266	47	105	127	13	16	29	28	62	65
Hallandale	127	155	220	73	85	114	21	39	69	17	17	15
Hollywood Hills	85	253	208	8	31	33	21	63	48	49	130	102
McArthur	181	261	244	28	63	53	68	87	96	61	79	68
William T. McFatter Technical	127	132	142	20	13	15	28	29	35	65	64	70
Miramar	275	201	135	166	105	63	48	43	40	15	16	14
Northeast	143	136	124	35	27	24	28	27	32	63	69	53
Nova	287	224	264	74	47	58	27	24	35	142	117	135
Piper	120	523	606	21	149	136	22	93	53	60	189	111
Plantation	215	278	201	67	90	72	33	45	27	77	91	75
Pompano Beach	84	162	182	25	50	41	16	21	27	30	73	101
South Broward	96	79	378	25	12	91	20	18	105	47	37	148
South Plantation	274	237	260	87	66	72	47	33	45	120	111	127
Stoneman Douglas	292	425	483	7	32	29	38	49	60	214	291	341
Stranahan	171	219	356	80	122	207	25	23	55	36	28	45
Taravella, J.P.	280	330	332	21	16	21	32	62	54	197	217	223
Western	262	374	152	4	6	3	78	98	36	147	207	100

\* 2003 is first year of Cypress Bay High School's participation in PSAT/NMSQT.

Table 6 provides total enrollment of Grade 10 students by ethnicity and data indicating participation in each ethnic group by school in PSAT/NMSQT. Data are provided over a three-year period where available. In 2003, the proportion of students participating in PSAT/NMSQT

ranged from 0% for Black Grade 10 students participating at Cooper City to 129% for Grade 10 Hispanic students at Pompano Beach High School.

In examining the proportion of minority students participating in PSAT/NMSQT over the three years depicted in the table, a positive trendline is seen for Black students at four schools (Charles W. Flanagan, Hallandale, Stranahan and Western) and for Hispanic students at nine schools (Boyd Anderson, Cooper City, Fort Lauderdale, Hallandale, McArthur, Nova, Pompano Beach, South Broward and Western). However a negative trendline is noted in the proportion of Black student participation at five schools (Deerfield Beach, Miramar, Northeast, Nova and J.P. Taravella) and for Hispanic students at four schools (Deerfield Beach, Dillard, Miramar and Wm. T. McFatter Technical). Caution should be used when looking at the proportion of students who participated due to the small number of students, by ethnicity, enrolled in the school.

One-year gains in the proportion of Black students participating in PSAT/NMSQT are noted at five schools (Coconut Creek, Coral Springs, Wm. T. McFatter Technical, Pompano Beach and South Broward) and at six schools for Hispanic students (Coconut Creek, Charles W. Flanagan, Northeast, South Plantation, Stoneman Douglas and Stranahan). A one-year decline is evidenced in the proportion of Black students participating at nine schools (Blanche Ely, Boyd Anderson, Dillard, Hollywood Hills, McArthur, Piper, Plantation, South Plantation and Stoneman Douglas) and for Hispanic students at six schools (Blanche Ely, Coral Springs, Hollywood Hills, Piper, Plantation and J.P. Taravella).

Table 6: PSAT/NMSQT Grade 10 Enrollment/Participation Results by School 2001-2003

High School	Year	Black			Hispanic			White		
		# Enrolled	# Part.	% Part.	# Enrolled	# Part.	% Part.	# Enrolled	# Part.	% Part.
Blanche Ely	2001	482	142	29%	59	19	32%	66	17	26%
	2002	430	178	41%	53	23	43%	67	21	31%
	2003	376	123	33%	49	19	39%	62	20	32%
Boyd Anderson	2001	548	158	29%	38	18	47%	51	31	61%
	2002	388	259	67%	29	27	93%	41	29	71%
	2003	547	327	60%	23	24	104%**	36		75%
Coconut Creek	2001	253	117	46%	124	66	53%	208	102	49%
	2002	206	91	44%	81	35	43%	162	83	51%
	2003	232	123	53%	121	83	69%	189	101	53%
Cooper City	2001	22	4	18%	66	18	27%	525	131	25%
	2002	12	0		63	21	33%	412	131	32%
	2003	8	0		63	23	37%	469	181	39%
Coral Springs	2001	113	25	22%	99	21	21%	414	140	34%
	2002	124	20	16%	115	34	30%	396	128	32%
	2003	141	31	22%	118	33	28%	387	137	35%
Cypress Bay *	2003	42	15	36%	371	143	39%	566	223	39%
	2001	200	188	94%	49	76	155%**	203	167	82%
Deerfield Beach	2002	128	38	30%	52	18	35%	143	62	43%
	2003	369	103	28%	119	32	27%	223	72	32%
	2001	528	188	36%	18	15	83%	30	18	60%
Dillard	2002	443	248	56%	19	15	79%	30	21	70%
	2003	412	130	32%	16	10	63%	30	20	67%
	2001	214	48	22%	412	115	28%	419	103	25%
Flanagan, Charles W.	2002	249	70	28%	438	116	26%	496	130	26%
	2003	243	88	36%	437	186	43%	431	148	34%

Table 6 Cont'd.: PSAT/NMSQT Grade 10 Enrollment/Participation Results by School 2001-2003

High School	Year	Black			Hispanic			White		
		# Enrolled	# Part.	% Part.	# Enrolled	# Part.	% Part.	# Enrolled	# Part.	% Part.
Fort Lauderdale	2001	173	47	27%	25	13	52%	88	28	32%
	2002	187	105	56%	22	16	73%	95	62	65%
	2003	228	127	56%	37	29	78%	92	65	71%
Hallandale	2001	180	73	41%	65	21	32%	36	17	47%
	2002	174	85	49%	76	39	51%	40	17	43%
	2003	195	114	58%	112	69	62%	40	15	38%
Hollywood Hills	2001	92	8	9%	143	21	15%	297	49	16%
	2002	80	31	39%	158	63	40%	316	130	41%
	2003	107	33	31%	156	48	31%	273	102	37%
McArthur	2001	136	28	21%	231	68	29%	227	61	27%
	2002	149	63	42%	201	87	43%	217	79	36%
	2003	144	53	37%	212	96	45%	182	68	37%
William T. McFatter Technical	2001	27	20	74%	20	28	140%**	79	65	82%
	2002	19	13	68%	23	29	126%**	93	64	69%
	2003	17	15	88%	33	35	106%**	77	70	91%
Miramar	2001	409	166	41%	96	48	50%	52	15	29%
	2002	360	105	29%	105	43	41%	51	16	31%
	2003	394	63	16%	133	40	30%	51	14	27%
Northeast	2001	113	35	31%	101	28	28%	205	63	31%
	2002	103	27	26%	107	27	25%	250	69	28%
	2003	97	24	25%	105	32	30%	196	53	27%
Nova	2001	134	74	55%	90	27	30%	252	142	56%
	2002	99	47	47%	55	24	44%	222	117	53%
	2003	136	58	43%	61	35	57%	208	135	65%
Piper	2001	159	21	13%	90	22	24%	277	60	22%
	2002	232	149	64%	112	93	83%	276	189	68%
	2003	350	136	39%	103	53	51%	245	111	45%

Table 6 Cont'd.: PSAT/NMSQT Grade 10 Enrollment/Participation Results by School 2001-2003

High School	Year	Black			Hispanic			White		
		# Enrolled	# Part.	% Part.	# Enrolled	# Part.	% Part.	# Enrolled	# Part.	% Part.
Plantation	2001	313	67	21%	102	33	32%	241	77	32%
	2002	284	90	32%	94	45	48%	228	91	40%
	2003	305	72	24%	93	27	29%	231	75	32%
Pompano Beach	2001	28	25	89%	16	16	100%	43	30	70%
	2002	58	50	86%	17	21	124%**	95	73	77%
	2003	47	41	87%	21	27	129%**	121	101	83%
South Broward	2001	133	25	19%	123	20	16%	226	47	21%
	2002	98	12	12%	102	18	18%	173	37	21%
	2003	116	91	78%	107	105	98%	217	148	68%
South Plantation	2001	229	87	38%	90	47	52%	261	120	46%
	2002	153	66	43%	72	33	46%	228	111	49%
	2003	199	72	36%	93	45	48%	226	127	56%
Stoneman Douglas	2001	78	7	9%	104	38	37%	607	214	35%
	2002	93	32	34%	134	49	37%	671	291	43%
	2003	128	29	23%	148	60	41%	668		51%
Stranahan	2001	243	80	33%	70	25	36%	94	36	38%
	2002	291	122	42%	76	23	30%	92	28	30%
	2003	288	207	72%	79	55	70%	75	45	60%
Taravella, J.P.	2001	65	21	32%	116	32	28%	526	197	37%
	2002	64	16	25%	146	62	42%	501	217	43%
	2003	78	21	27%	161	54	34%	520	223	43%
Western	2001	46	4	9%	273	78	29%	644	147	23%
	2002	47	6	13%	309	98	32%	655	207	32%
	2003	20	3	15%	95	36	38%	360	100	28%

\* 2003 is the first year of Cypress Bay High School's participation in PSAT/NMSQT.

\*\*Participation rates may exceed 100% due to student self-reported demographic information.

Table 7 provides Grade 10 PSAT/NMSQT mean scale scores for Black, Hispanic and White students. Data are provided over a three-year period where available. Please note no data reported when less than ten students tested. Caution must be used when viewing gains or declines in this table as the number of students in each ethnic group will vary widely from school to school and year to year.

A positive trendline is seen at Miramar for: Black students in all areas, Hispanic students in Mathematics, and Hispanic and White students in Writing. At Blanche Ely, a positive trendline is noted for Hispanic and White students in all areas and for Black students in Mathematics and Writing. Black Students at Pompano Beach posted a positive trendline in Verbal and Mathematics. At Deerfield Beach and Dillard, a positive trendline is indicated for all groups in Mathematics. At Cooper City, a positive trendline is seen in Verbal mean scores for White students. A positive trendline is recorded for White students in Writing at Hallandale and William T. McFatter Technical. In addition, a positive trendline is seen for Hispanic students in Verbal mean scores at William T. McFatter Technical and Piper, in Mathematics at William T. McFatter Technical and Plantation and for White students in Mathematics at Nova.

In 2003, mean scores equal to or greater than scores reported the previous year are seen in all areas for Black students at four schools (William T. McFatter Technical, Miramar, Northeast and Pompano Beach). One-year gains made by students in 2003 over the previous year are noted for Black students in Mathematics and Writing in two schools (Blanche Ely and Piper).

Gains are also noted for Hispanic students from 2002 to 2003. Hispanic students at three schools (Blanche Ely, William T. McFatter Technical and Piper) recorded higher mean scores in all areas. Gains in Mathematics and Writing scores are seen for Hispanic students at Miramar.

Gains for White students were posted for all areas at four schools (Fort Lauderdale, Piper, Plantation and J.P. Taravella). One-year gains are depicted for Verbal and Mathematics at four schools (Boyd Anderson, Hallandale, Miramar and Northeast). Gains in Mathematics and Writing for White students are noted at two schools (Hollywood Hills and Stoneman Douglas). Gains in Verbal scores are seen at Coral Springs, Dillard and Stranahan and in Writing at Cooper City, Pompano Beach and Western.

As reported in Table 7, not all schools have made gains. A negative trendline is seen for Black students in all areas at two schools (Plantation and Stranahan), in Mathematics and Writing at Boyd Anderson. A negative trendline is also noted for Black students at Piper and J.P. Taravella for Verbal scores, at Charles W. Flanagan for Mathematics and at two schools (Fort Lauderdale and South Broward) in Writing. It should be noted, however, that significant increases in Black student participation, during the three-year period reported in the table, are evident at Boyd Anderson, Fort Lauderdale, Piper, South Broward and Stranahan. Likewise, Hispanic students posted negative trends in all areas at Boyd Anderson, in Verbal at three schools (Charles W. Flanagan, Stoneman Douglas and Western), in Mathematics at Stranahan and in Writing at two schools (Dillard and Fort Lauderdale). It should also be noted that significant increases in Hispanic student participation is seen at Charles W. Flanagan and Stoneman Douglas. A negative trend in Verbal and Mathematics is noticed for White students at Western, with Coral



Springs and Stranahan posting negative trends in Mathematics and Writing. White students also posted a negative trendline in Verbal at Hollywood Hills, in Mathematics at South Broward, and in Writing at two schools (Dillard and Northeast).

Also illustrated in this table are one-year drops in mean scores from 2002. At Coconut Creek and South Plantation, a decline was seen for all groups in all areas. Black students at Coral Springs and William T. McFatter Technical slipped in all areas, at Hallandale and South Broward in Verbal and Mathematics, at Deerfield Beach and Dillard in Verbal and Writing and at J.P. Taravella in Mathematics and Writing. A decline was also seen in Verbal scores for Black students at seven schools (Blanche Ely, Boyd Anderson, Charles W. Flanagan, Fort Lauderdale, Hollywood Hills, Nova and Stoneman Douglas). Similarly, Hispanic students experienced a decline in mean scores this year. Lower scores in all areas were posted at four schools (Cooper City, Hollywood Hills, Nova and South Broward). Hispanic students at Fort Lauderdale and Northeast slipped in both Verbal and Mathematics and at Deerfield Beach and Stranahan in both Verbal and Writing. One-year declines are also seen in Verbal scores at five schools (Dillard, Hallandale, McArthur, Miramar and Pompano Beach). In addition, Hispanic students saw one-year declines in Mathematics at J.P. Taravella and Western, and in Writing at Coral Springs and Plantation. Declines in Verbal and Mathematics are noted for White students at McArthur and Pompano Beach. Mean scores for White students at three schools (Deerfield Beach, Nova and South Broward) slipped this year in Verbal and Writing, with two schools (Charles W. Flanagan and William T. McFatter Technical) showing declines in Verbal and Boyd Anderson students showing a one-year drop in Writing.

High School	Year	Black				Hispanic				White			
		#	V	M	W	#	V	M	W	#	V	M	W
Blanche Ely	2001	142	35.1	37.2	37.5	19	33.2	38.5	37.7	17	42.1	41.2	39.7
	2002	178	40.3	40.8	39.5	23	38.3	40.9	39.5	21	44.1	48.1	43.5
	2003	123	39.6	41.8	40.6	19	40.4	43.5	43.1	20	45.9	49.0	45.4
Boyd Anderson	2001	158	36.6	37.6	40.5	18	50.3	46.7	47.5	31	57.5	54.8	53.7
	2002	259	36.9	36.7	38.0	27	40.7	42.6	42.0	29	53.3	54.5	54.7
	2003	327	34.4	35.9	37.5	24	38.0	40.1	41.4	27	53.5	54.8	52.7
Coconut Creek	2001	117	33.0	35.0	37.0	66	36.1	37.8	37.9	102	38.3	39.5	40.1
	2002	91	35.6	35.5	38.9	35	38.9	42.4	39.8	83	42.9	43.0	42.0
	2003	123	33.2	34.0	36.3	83	35.9	35.7	38.2	101	40.4	40.1	41.4
Cooper City	2001	4**				18	45.0	44.2	42.7	131	47.6	48.6	46.8
	2002	0				21	49.0	48.7	45.6	131	47.9	50.2	46.5
	2003	0				23	45.3	43.6	44.9	181	48.3	50.0	47.5
Coral Springs	2001	25	38.8	40.1	40.6	21	42.8	44.4	43.5	140	48.4	50.0	46.8
	2002	20	43.8	43.3	43.0	34	41.5	42.9	44.0	128	46.4	47.6	46.6
	2003	31	37.5	40.4	40.6	33	41.8	43.8	42.9	137	46.5	47.1	45.6
Cypress Bay	2003*	15	39.1	43.4	41.0	143	43.3	46.2	44.2	223	46.7	49.0	47.0
Deerfield Beach	2001	188	33.2	34.4	37.0	76	35.2	38.4	37.9	167	44.5	44.4	45.3
	2002	38	37.7	37.1	39.0	18	43.6	44.4	42.9	62	49.0	48.1	47.6
	2003	103	35.0	37.3	37.2	32	39.3	45.3	41.8	72	47.3	48.7	45.3
Dillard	2001	188	32.3	34.3	37.0	15	38.1	38.2	41.4	18	50.1	49.1	49.9
	2002	248	35.0	36.5	37.3	15	40.1	39.4	40.9	21	46.4	43.8	47.0
	2003	130	34.6	37.3	37.1	10	39.0	42.4	40.4	20	46.6	49.3	44.3

Table 7 Cont'd.: PSAT/NMSQT Grade 10 School Mean Scale Score by Ethnicity 2001-2003													
High School	Year	Black				Hispanic				White			
		#	V	M	W	#	V	M	W	#	V	M	W
Flanagan, Charles W.	2001	48	42.3	41.9	42.4	115	45.1	45.8	45.4	103	46.5	47.8	47.6
	2002	70	42.5	41.3	41.6	116	42.9	44.5	43.5	130	47.4	50.1	48.2
	2003	88	40.3	40.8	41.9	186	42.5	45.0	43.7	148	46.3	47.2	46.9
Fort Lauderdale	2001	47	37.4	38.1	39.6	13	40.6	41.2	45.3	28	49.3	48.4	48.9
	2002	105	38.1	36.9	39.2	16	41.9	43.3	42.1	62	44.5	42.9	43.6
	2003	127	36.9	38.9	38.6	29	37.9	41.2	39.7	65	48.1	47.8	46.7
Hallandale	2001	73	33.0	35.6	37.8	21	38.2	40.3	39.8	17	40.4	41.3	38.8
	2002	85	36.1	36.3	36.8	39	38.5	38.2	38.5	17	39.8	37.4	39.2
	2003	114	34.5	36.0	37.0	69	36.5	38.6	38.8	15	42.9	43.1	43.2
Hollywood Hills	2001	8**				21	37.2	38.9	39.5	49	45.9	46.2	45.1
	2002	31	33.8	35.1	36.1	63	40.5	42.4	40.3	130	43.5	44.1	42.1
	2003	33	37.4	37.2	37.8	48	40.1	40.2	39.7	102	43.0	46.1	43.1
McArthur	2001	28	37.0	39.4	40.3	68	37.9	39.3	39.8	61	42.7	43.0	43.2
	2002	63	35.9	37.3	38.3	87	38.4	38.7	38.0	79	43.0	46.2	43.6
	2003	53	38.3	40.5	39.3	96	38.2	39.5	39.4	68	39.7	43.6	42.0
William T. McFatter Technical	2001	20	38.3	41.4	40.8	28	40.7	42.5	40.8	65	44.5	45.2	42.6
	2002	13	47.2	44.5	44.8	29	41.9	42.0	42.1	64	45.9	46.0	43.4
	2003	15	42.9	42.4	43.9	35	46.5	47.8	45.7	70	45.7	46.9	44.8
Miramar	2001	166	32.8	34.3	36.0	48	33.8	33.9	37.0	15	42.1	43.7	39.7
	2002	105	40.6	40.3	40.4	43	42.2	41.4	41.6	16	40.1	40.9	41.6
	2003	63	41.2	40.5	41.9	40	41.0	42.9	42.0	14	51.6	45.9	47.9
Northeast	2001	35	41.7	41.6	41.8	28	42.1	42.6	42.4	63	47.8	47.6	47.5
	2002	27	38.9	40.0	39.7	27	42.3	44.5	42.2	69	46.2	45.6	45.8
	2003	24	39.6	40.7	42.4	32	42.1	42.1	42.5	53	46.5	47.0	45.3
Nova	2001	74	40.1	42.2	42.2	27	38.5	42.3	42.1	142	47.1	49.8	47.1
	2002	47	41.7	41.4	41.4	24	46.9	45.1	47.0	117	48.5	50.6	47.3
	2003	58	41.0	41.5	42.1	35	39.6	43.4	41.8	135	48.0	50.7	46.7
Piper	2001	21	38.4	39.2	41.7	22	38.3	39.7	41.9	60	43.0	45.7	44.3
	2002	149	36.8	35.8	38.2	93	39.5	38.4	39.0	189	41.7	42.8	41.4
	2003	136	36.0	36.9	38.2	53	40.1	40.8	41.9	111	42.2	44.3	42.3
Plantation	2001	67	39.2	39.8	41.3	33	40.0	40.1	41.5	77	46.7	47.9	47.8
	2002	90	37.9	37.4	40.6	45	39.0	41.3	42.5	91	45.7	47.6	46.4
	2003	72	36.7	37.2	40.0	27	40.8	41.7	41.7	75	46.7	49.7	46.9
Pompano Beach	2001	25	38.4	39.3	41.4	16	41.2	42.4	43.3	30	42.9	43.9	42.9
	2002	50	40.7	40.2	40.5	21	44.5	42.3	40.6	73	44.1	44.1	42.9
	2003	41	42.6	43.4	43.1	27	43.8	45.2	43.6	101	43.7	43.7	44.8
South Broward	2001	25	38.5	36.6	39.6	20	40.1	40.6	42.0	47	45.0	44.7	46.2
	2002	12	38.8	37.9	39.3	18	43.2	41.4	42.8	37	46.5	46.9	46.4
	2003	91	32.8	34.4	37.0	105	37.6	38.9	39.4	148	41.5	43.1	42.5
South Plantation	2001	87	36.7	37.4	39.6	47	39.3	41.4	41.4	120	44.4	47.1	44.5
	2002	66	39.5	39.9	39.7	33	41.5	42.9	42.3	111	47.0	47.6	46.0
	2003	72	34.5	36.4	38.7	45	37.7	40.6	41.3	127	46.0	47.1	44.7
Stoneman Douglas	2001	7**				38	44.3	44.0	44.8	214	48.4	50.3	47.5
	2002	32	43.4	41.6	41.8	49	44.0	43.9	44.4	291	47.1	49.2	46.3
	2003	29	41.5	44.3	42.1	60	42.5	45.7	45.1	341	47.9	50.3	48.3

High School	Year	Black				Hispanic				White			
		#	V	M	W	#	V	M	W	#	V	M	W
Stranahan	2001	80	41.5	41.8	41.9	25	42.7	43.0	42.4	36	48.3	47.9	47.3
	2002	122	41.4	41.5	41.7	23	42.8	41.9	42.5	28	43.4	45.5	43.6
	2003	207	38.1	39.6	40.4	55	40.0	40.9	42.3	45	43.5	44.6	43.3
Taravella, J.P.	2001	21	42.8	40.9	41.9	32	44.8	42.6	46.1	197	48.6	51.0	48.6
	2002	16	42.2	45.4	43.4	62	44.1	46.2	45.1	217	45.8	48.8	45.9
	2003	21	39.2	38.0	41.2	54	45.0	45.4	45.9	223	47.5	50.3	47.8
Western	2001	4**				78	42.8	44.3	44.9	147	47.8	49.1	47.8
	2002	6**				98	42.6	45.0	42.0	207	47.4	47.9	46.3
	2003	3**				36	42.1	42.4	43.4	100	46.6	46.4	47.4

\* 2003 is first year of Cypress Bay High School's participation in PSAT/NMSQT.  
 \*\*No data reported when less than 10 students tested.

Table 8 displays mean scores for 10<sup>th</sup> and 11<sup>th</sup> Grade participants in 2003 for high schools in Broward. Two schools (Cooper City and Stoneman Douglas) surpassed the national Grade 10 and 11 mean scores in all areas.

As displayed in Table 8, two Broward schools, (Cypress Bay and J.P. Taravella) eclipsed the national Grade 10 mean scores in all areas. Additionally, two Broward schools (William T. McFatter Technical and Nova) exceeded the Grade 10 Verbal and Mathematics national mean scores. One school, Western, surpassed the national Grade 10 Verbal and Writing mean scores.

In Grade 11, two schools (Coral Springs and Hollywood Hills) surpassed the national mean scores in all areas, and five schools (Deerfield Beach, William T. McFatter Technical, Miramar, J.P. Taravella and Western) earned Verbal and Mathematics mean scores higher than the national average. In addition, Northeast High School posted a higher Grade 11 Verbal score than the national average and equaled the national Writing score. Additionally, Charles W. Flanagan High surpassed the national Grade 11 Mathematics score. Comparisons among schools are not advised, particularly at the 10<sup>th</sup> grade level. Recall that all 10<sup>th</sup> grade students are encouraged to take the PSAT/NMSQT – at no cost to the student – for use in identifying readiness for college level work. Differing participation rates may greatly influence mean scores.

	Grade 10				Grade 11			
	#	V	M	W	#	V	M	W
<b>Nation</b>		<b>44.4</b>	<b>45.5</b>	<b>45.9</b>		<b>48.0</b>	<b>49.2</b>	<b>48.8</b>
<b>Florida</b>		<b>40.7</b>	<b>41.9</b>	<b>42.2</b>		<b>48.8</b>	<b>49.5</b>	<b>49.0</b>
<b>Broward</b>	<b>7,430</b>	<b>41.2</b>	<b>42.9</b>	<b>42.4</b>	<b>4,499</b>	<b>46.9</b>	<b>48.7</b>	<b>46.9</b>
<b>High School</b>								
Blanche Ely	187	40.3	43.2	41.4	197	44.1	46.0	44.6
Boyd Anderson	455	36.1	37.8	39.1	111	47.1	47.4	46.6
Coconut Creek	356	36.4	36.8	38.6	102	45.6	48.0	46.2
Cooper City	227	47.9	49.4	47.2	214	49.7	52.5	49.0
Coral Springs	234	44.1	45.2	44.3	233	48.4	49.7	49.1
Cypress Bay	412	45.4	48.0	46.0	36.8	47.4	49.8	47.1
Deerfield Beach	253	40.4	43.2	41.0	106	49.4	52.0	47.6
Dillard	247	35.6	38.0	37.9	114	41.1	42.6	41.8

<b>Table 8 Cont'd.: Broward PSAT/NMSQT Participation and Mean Scores 2003</b>								
	Grade 10				Grade 11			
	#	V	M	W	#	V	M	W
<b>Nation</b>		<b>44.4</b>	<b>45.5</b>	<b>45.9</b>		<b>48.0</b>	<b>49.2</b>	<b>48.8</b>
<b>Florida</b>		<b>40.7</b>	<b>41.9</b>	<b>42.2</b>		<b>48.8</b>	<b>49.5</b>	<b>49.0</b>
<b>Broward</b>	<b>7,430</b>	<b>41.2</b>	<b>42.9</b>	<b>42.4</b>	<b>4,499</b>	<b>46.9</b>	<b>48.7</b>	<b>46.9</b>
<b>High School</b>								
Flanagan, Charles W.	506	43.6	45.3	44.5	327	46.9	49.5	47.0
Fort Lauderdale	266	40.1	41.3	40.9	93	46.0	46.2	45.8
Hallandale	220	36.2	37.5	38.5	75	43.8	43.3	42.3
Hollywood Hills	208	41.3	43.5	41.3	92	48.9	50.5	48.9
McArthur	244	38.7	41.3	40.4	129	42.6	45.5	44.4
William T. McFatter Technical	142	45.8	47.0	45.2	136	48.0	49.6	45.7
Miramar	135	42.8	42.4	42.8	73	49.8	51.7	48.1
Northeast	124	43.2	43.8	43.6	106	48.2	46.8	48.8
Nova	264	44.7	47.4	44.6	215	49.5	51.0	49.6
Piper	606	36.2	37.4	38.7	271	44.0	44.7	43.9
Plantation	201	41.8	43.4	43.2	193	44.9	47.5	45.6
Pompano Beach	182	43.6	43.9	44.2	123	46.9	46.7	45.6
South Broward	378	38.1	39.6	40.2	85	43.7	44.3	45.0
South Plantation	260	41.3	43.0	42.5	175	44.2	46.6	44.5
Stoneman Douglas	483	46.2	49.4	47.0	388	49.9	52.1	50.5
Stranahan	356	39.3	40.8	41.2	179	44.9	46.9	45.6
Taravella, J.P.	332	46.4	48.5	46.9	275	49.0	51.3	48.6
Western	152	44.9	45.3	46.2	119	48.3	49.3	47.3

### **Charter Schools**

As reported in Table 9, three charter schools, City of Coral Springs, North Lauderdale Academy and Pembroke Pines Charter High School, participated in PSAT/NMSQT testing this year. The City of Coral Springs Charter School's Grade 11 Writing mean score surpassed the District average, and their Verbal score equaled the District Verbal score.

<b>Table 9: Charter School PSAT/NMSQT Participation and Mean Scores 2003</b>								
	Grade 10				Grade 11			
	#	Verbal	Mathematics	Writing	#	Verbal	Mathematics	Writing
<b>Broward</b>	<b>7,018</b>	<b>40.9</b>	<b>42.6</b>	<b>42.2</b>	<b>4,131</b>	<b>46.9</b>	<b>48.6</b>	<b>46.9</b>
<b>Nation</b>		<b>44.4</b>	<b>45.5</b>	<b>45.9</b>		<b>48.0</b>	<b>49.2</b>	<b>48.8</b>
<i>Charter School</i>								
City of Coral Springs	106	39.8	41.0	41.6	34	46.9	45.2	47.3
North Lauderdale	75	35.6	34.2	36.0	12	42.7	42.9	41.3
Pembroke Pines	296	40.8	41.4	41.6	200	46.4	45.8	45.4

**Next Steps**

Broward's increased PSAT/NMSQT participation rate demonstrates a commitment to provide students with increasing educational opportunities. PSAT/NMSQT results will be used by school staff as additional information to identify students for honors or AP classes. Schedules for next year will be revisited where warranted.

As recommended by the Superintendent's committee to study PSAT/NMSQT participation:

- All schools will administer the PSAT/NMSQT to Grade 10 students on the Tuesday test date in October 2003 (no Saturday option).
- Students identified as "ready for college" or who "will need assistance to be ready for college" will receive letters from the Superintendent in both May and September encouraging them to participate in PSAT/NMSQT testing.
- Schools will implement strategies which are appropriate to increase the percent of students participating in the PSAT/NMSQT administration that score at the 40<sup>th</sup> percentile or above on FCAT NRT or Level III or above on FCAT SSS or have a GPA of 2.0.
- Area offices will monitor the participation rates as related to enrollment at Grades 10 and 11 and to college readiness. For Grade 11 students, the availability of a fee waiver is critical information that must be communicated early in the school year.

***References***

- College Board. (2002). [www.collegeboard.com](http://www.collegeboard.com)  
National Merit Scholarship Program. (2002). [www.nationalmerit.org](http://www.nationalmerit.org)  
State of Florida. (2003). [www.oneflorida.org](http://www.oneflorida.org)