

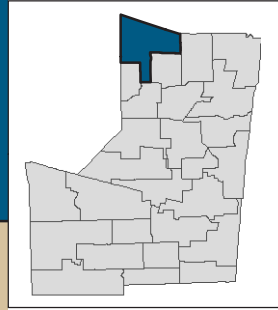
# STONEMAN DOUGLAS, MARJORY

## HIGH SCHOOL

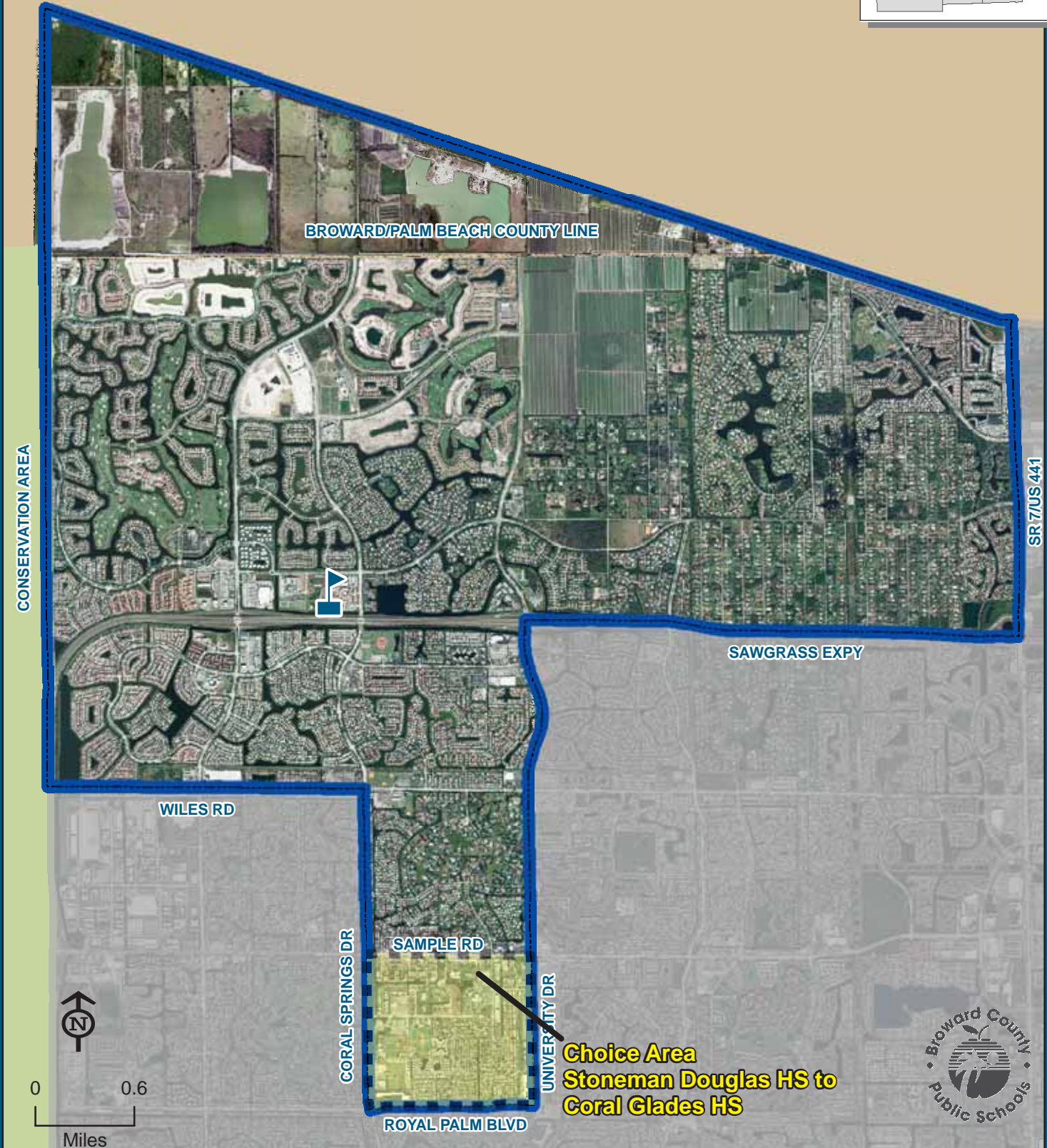
5901 PINE ISLAND ROAD  
PARKLAND, FLORIDA 33076  
754-322-2150

**Choice Area**

(Information on reverse side)



Map incorporating school boundary changes for the 2010-11 school year



STONEMAN DOUGLAS, MARJORY

THIS MAP IS FOR CONCEPTUAL PURPOSES ONLY AND SHOULD NOT BE USED FOR LEGAL BOUNDARY DETERMINATIONS

# **STONEMAN DOUGLAS, MARJORY HIGH SCHOOL**

## **Choice Area Description**

### **MARJORY STONEMAN DOUGLAS HIGH TO CORAL GLADES HIGH:**

Ninth through twelfth grade students who attended Sawgrass Springs Middle School for the 2006-07 school year residing within the area bounded by Coral Springs Drive and Sample Road, east along Sample Road to University Drive, south along University Drive to Royal Palm Boulevard, west along Royal Palm Boulevard to Coral Springs Drive, north along Coral Springs Drive to Sample Road are assigned to Stoneman Douglas High School with a choice to attend Coral Glades High School.

Students interested in attending the Choice School must apply for a reassignment between May 1 and June 15. The reassignment application is available online at [www.browardschools.com](http://www.browardschools.com), or through the Innovative Programs office at (754) 321-2380.