

**THE SCHOOL BOARD OF BROWARD COUNTY, FLORIDA  
OFFICE OF THE SUPERINTENDENT**

**MR. JAMES F. NOTTER  
SUPERINTENDENT OF SCHOOLS**

**Telephone: 754-321-2600**

**Facsimile: 754-321-2701**

*Approved memorandum with signatures is on file.*

~~November 18, 2010~~

**REVISED 11/19/10**

**TO:** School Board Members

**FROM:** Joanne W. Harrison, Ed.D., Deputy Superintendent  
Educational Programs & Student Support

**VIA:** James F. Notter  
Superintendent of Schools

**SUBJECT: GRADUATION AND DROPOUT RATES FOR BROWARD COUNTY  
PUBLIC SCHOOLS, 2005-06 TO 2009-10**

Today, the Florida Department of Education (FDOE) released graduation and dropout rates for Florida and the 67 individual Florida school districts. These data can be located online at the FDOE's Education Information & Accountability Services Web site (<http://www.fldoe.org/eias/eiaspubs/default.asp>).

As stated in the FDOE Data Report, "In September 2009, the Florida State Board of Education (SBE) approved the state's new high school grading formula, which incorporates graduation rates into the grading of high schools. The graduation rate the SBE chose to use in the new grading formula is the state's National Governors Association (NGA) Compact rate, which includes standard and special diplomas but excludes GEDs, both regular and adult. Florida is using this rate in place of its regular rate because the U.S. Department of Education (ED) is moving all states to adopt a uniform calculation method by 2010-11, that includes standard diplomas but excludes GEDs and special diplomas. Using the NGA rate now helps to transition Florida to the new federal rate when it becomes effective" (FDOE, 2010).

**An examination of the data for Broward County Public Schools (BCPS) revealed an increase of 3.8 percentage points in the NGA graduation rate from 73.9 percent in 2008-09 to 77.7 percent in 2009-10. However, BCPS' dropout rate dropped slightly from 2.1 percent in 2008-09 to 1.6 percent in 2009-10.** Please note that graduation and drop-out rates are calculated independently. While graduation rates are determined by a four-year cohort of students, dropout rates are determined based on a single year's enrollment in grades 9-12.

Beginning with the 1998-99 school year, the Florida Department of Education (FDOE) has implemented a cohort-based method for calculating graduation rates (FDOE, 2008). The calculation accounts for every student entering and leaving Florida district schools. The rate measures the percentage of students who graduate within four years of their first enrollment in ninth grade. Students who transfer out of the school population are removed from the graduation cohort.

# Graduation and Dropout Rates for BCPS, 2005-06 to 2009-10

November 18, 2010 REVISED 11/19/10

Page 2

Likewise, students who transfer into the school population are added to the cohort and are included in the count of the class with which they were initially scheduled to graduate. A description of each of the different graduation rates released by FDOE is presented in Appendix A. **Figure 1 shows an increase for all three versions of the graduation rates for Broward.**

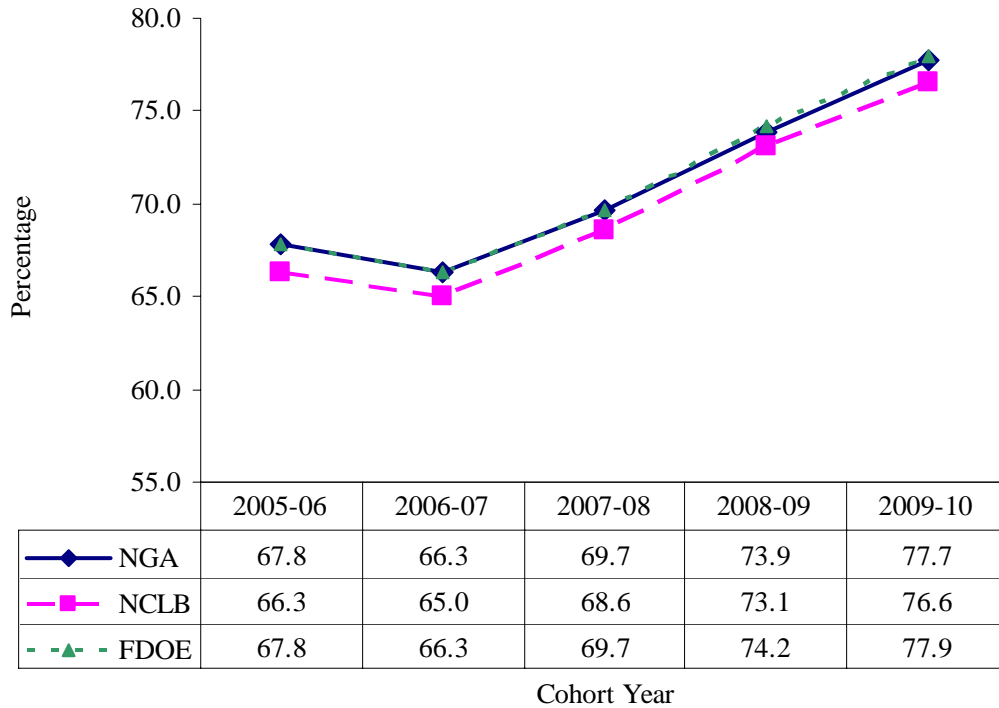


Figure 1. BCPS three graduation rates, 2005-06 to 2009-10.

### NGA Graduation Rate

Because the high school grading formula will now use the NGA method to calculate graduation rates, this report will focus on the NGA graduation rate. An analysis of the graduation data revealed that the BCPS’ NGA graduation rate increased each of the last five years, with the exception of 2006-07, as illustrated in Table 1. Broward ranks fourth among the five districts in the 2009-10 NGA graduation rate. As the table shows, the NGA graduation rate for BCPS rose by 3.8 percentage points in 2009-10, while Florida districts overall increased by 2.7 percentage points from 2008-09 to 2009-10. This increase in NGA graduation rate ranks Broward as the second highest increase of the five largest school districts in Florida.

## Graduation and Dropout Rates for BCPS, 2005-06 to 2009-10

November 18, 2010 REVISED 11/19/10

Page 3

Table 1

*Comparison of BCPS NGA Graduation Rates with Other Large Florida School Districts, 2005-06 through 2009-10*

	2005-06	2006-07	2007-08	2008-09	2009-10	Change 2008-09 to 2009-10
<b>Broward</b>	<b>67.8</b>	<b>66.3</b>	<b>69.7</b>	<b>73.9</b>	<b>77.7</b>	<b>+3.8</b>
Hillsborough	74.5	76.3	77.0	82.2	82.3	+0.1
Miami-Dade	58.7	63.4	65.4	68.5	72.1	+3.6
Orange	70.6	69.7	73.6	75.9	79.0	+3.1
Palm Beach	68.2	70.2	73.6	77.7	81.9	+4.2
Florida	68.9	70.3	73.1	76.3	79.0	+2.7

### *NGA Graduation Rates by Race*

Table 2 shows a comparison of NGA graduation rates by race for Broward from 2005-06 through 2009-10. The table shows that, during the last four years, Broward has registered increases in graduation rates for each one of the race/ethnic subgroups (with the exception of American Indian students in 2009-10). From 2005-06 to 2009-10, the NGA graduation rate increased over 10 percentage points for Black, Hispanic, and Multiracial students, and increased between 5 and 10 percentage points for White and Asian subgroups. American Indian students registered over a 10 percentage point drop in NGA graduation rates from 2005-06 to 2009-10; however, this fluctuation may be attributed to a smaller sample size for this subgroup of students.

Table 2

*BCPS NGA Graduation Rates by Race, 2005-06 through 2009-10*

School Year	White, Non- Hispanic	Black, Non- Hispanic	Hispanic	Asian/ Pacific Islander	American Indian/Alaskan Native	Multiracial	Total
2005-06	77.6	56.7	68.5	84.7	75.0	66.1	67.8
2006-07	76.8	55.3	66.9	83.0	76.8	68.2	66.3
2007-08	78.8	59.2	71.4	86.3	76.8	76.2	69.7
2008-09	82.5	64.1	76.3	88.5	80.8	80.2	73.9
2009-10	85.2	68.8	80.7	91.2	63.3	83.7	77.7

### *NGA Graduation Rates by Race within Gender*

Table 3 shows the BCPS NGA graduation rates for Black, Hispanic, and White students within gender for the 2008-09 and 2009-10 school years. The results from this table show graduation rates increased for each race and gender, with Hispanic male (6.2 percentage points) and Black male (5.1 percentage points) students evidencing the largest increases.

## Graduation and Dropout Rates for BCPS, 2005-06 to 2009-10

November 18, 2010 REVISED 11/19/10

Page 4

Table 3

*BCPS NGA Graduation Rates by Race within Gender, 2008-09 through 2009-10*

	Black, Non-Hispanic		Hispanic		White, Non-Hispanic	
	Male	Female	Male	Female	Male	Female
2008-09	57.2	70.9	71.7	80.9	79.0	86.1
2009-10	62.3	75.1	77.9	83.5	82.9	87.5
<b>Change 2008-09 to 2009-10</b>	<b>5.1</b>	<b>4.2</b>	<b>6.2</b>	<b>2.6</b>	<b>3.9</b>	<b>1.4</b>

Table 4 shows a comparison of NGA graduation rates by race for Broward with the other four large school districts in Florida for 2009-10. As the table illustrates, among the five districts, Broward ranks fourth on graduation rates for White, Black, and Asian students. Broward registered the highest graduation rate among the five districts for Hispanic students. The table also shows that in 2009-10, graduation rates for Broward's Black, Hispanic, and Asian students surpassed their state counterparts. Appendix B illustrates NGA graduation rates by race from 2005-06 to 2009-10.

Table 4

*Comparison of BCPS NGA Graduation Rates with Other Large Florida School Districts by Race, 2009-10*

	White, Non- Hispanic	Black, Non- Hispanic	Hispanic	Asian/Pacific Islander	American Indian/Alaskan Native	Multiracial
<b>Broward</b>	<b>85.2</b>	<b>68.8</b>	<b>80.7</b>	<b>91.2</b>	<b>63.3</b>	<b>83.7</b>
Hillsborough	87.9	75.1	76.5	94.4	85.0	86.3
Miami-Dade	82.2	63.7	73.9	86.2	78.9	81.4
Orange	87.1	69.8	75.0	92.1	77.2	81.2
Palm Beach	90.6	70.4	79.6	94.6	78.2	86.1
Florida	85.4	68.4	75.3	89.8	76.8	83.7

### *Dropout Rates*

To determine the dropout rate in any given year (e.g., 2009-10) the unduplicated count of students in grades 9 through 12 that were assigned a dropout code at the end of the school year is divided by the total count of students in grade 9 through 12 attending school at anytime during that year. This figure includes students who were expected to enroll but did not.

**A comparison of BCPS dropout data from 2005-06 to 2009-10 indicates a 1.1 percentage point decrease as shown in Table 5.** BCPS continues to report a lower incidence of dropouts than two (Miami-Dade and Palm Beach) of the other four largest districts and the state overall. However, two of the other four districts and the state overall evidenced declines in dropout rates from 2008-09 to 2009-10.

## Graduation and Dropout Rates for BCPS, 2005-06 to 2009-10

November 18, 2010 REVISED 11/19/10

Page 5

Table 5

*Comparison of BCPS Dropout Rates with Other Large Florida School Districts, 2005-06 through 2009-10*

	2005-06	2006-07	2007-08	2008-09	2009-10	Change 2008-09 to 2009-10
<b>Broward</b>	<b>2.7</b>	<b>3.2</b>	<b>2.0</b>	<b>2.1</b>	<b>1.6</b>	<b>-0.5</b>
Hillsborough	2.1	1.6	1.8	1.0	0.7	-0.3
Miami-Dade	6.7	5.8	4.5	3.9	4.0	+0.1
Orange	1.9	1.7	1.5	1.1	0.7	-0.4
Palm Beach	3.0	4.4	3.9	2.6	2.8	+0.2
Florida	3.5	3.3	2.6	2.3	2.0	-0.3

### *Dropout Rates by Race*

Table 6 shows a comparison of NGA dropout rates by race for Broward from 2005-06 through 2009-10. Since 2006-07, Broward has registered decreases in dropout rates for all the race/ethnic subgroups.

Table 6

*BCPS Dropout Rates by Race, 2005-06 through 2009-10*

School Year	White, Non- Hispanic	Black, Non- Hispanic	Hispanic	Asian/ Pacific Islander	American Indian/ Alaskan Native	Multiracial	Total
2005-06	1.7	3.9	2.2	1.3	0.6	2.2	2.7
2006-07	2.1	4.7	2.5	1.9	2.9	2.5	3.2
2007-08	1.2	2.9	1.6	0.7	3.1	1.4	2.0
2008-09	1.3	2.9	1.6	0.6	3.0	2.2	2.1
2009-10	1.0	2.5	0.9	0.5	1.5	0.9	1.6

Table 7 shows a comparison of dropout rates by race for Broward with the other four largest school districts in Florida for 2009-10. Appendix C illustrates dropout rates by race from 2005-06 to 2009-10.

Table 7

*Comparison of BCPS Dropout Rates with Other Large Florida School Districts by Race, 2009-10*

	White, Non- Hispanic	Black, Non- Hispanic	Hispanic	Asian/Pacific Islander	American Indian/Alaskan Native	Multiracial
<b>Broward</b>	<b>1.0</b>	<b>2.5</b>	<b>0.9</b>	<b>0.5</b>	<b>1.5</b>	<b>0.9</b>
Hillsborough	0.5	1.2	0.9	0.1	0.0	0.6
Miami-Dade	2.9	4.9	3.8	2.0	1.7	1.9
Orange	0.5	1.1	0.7	0.1	0.0	0.5
Palm Beach	1.6	4.5	2.9	2.1	3.4	2.9
Florida	1.4	2.9	2.5	0.8	2.2	1.4

## Graduation and Dropout Rates for BCPS, 2005-06 to 2009-10

~~November 18, 2010~~ REVISED 11/19/10

Page 6

Additionally, three summary appendices (Appendix D, E, and F) were included to shed light on graduation and dropout performance for schools in Broward. Appendix D shows NGA, FDOE, and NCLB graduation rates along with dropout rates for Broward schools in 2009-10. Appendix E displays a comparison of school NGA graduation rates from 2007-08 to 2009-10. Appendix F shows a comparison of school dropout rates from 2007-08 through 2009-10. **The results of Appendix E show that 79% (n=26) of 33 traditional high schools increased their NGA graduation rate by at least one percentage point from 2008-09 to 2009-10. There was also a dramatic increase (10 or more percentage points) in NGA graduation rates for several high schools, most notable are Boyd Anderson, Coconut Creek, Hallandale, McArthur, Miramar, Plantation, and Stranahan.**

Attached, please find the report released today by the Florida Department of Education regarding 2009-10 graduation and dropout rates. This memorandum may be accessed via the Research Services Web site ([http://www.broward.k12.fl.us/research\\_evaluation/ResearchServices.htm](http://www.broward.k12.fl.us/research_evaluation/ResearchServices.htm)). If you have any comments concerning this memorandum, please contact **Dr. Maria Ligas, Research Specialist, or Mr. Richard Baum, Database Researcher IV, Research Services at 754-321-2500.**

JFN/JWH/MRL:rgb

Attachments

cc: Executive Leadership Team  
Area Directors  
High School Principals  
Jeanne Jusevic, Chairperson, District Advisory Council  
Bernie Kemp, President, Broward County Council of PTA

### References

Florida Department of Education. (2008). *Technical Guide for the 2007-08 Florida High School Graduation Rate*. Tallahassee, FL: Florida Department of Education. Retrieved November 16, 2009, from <http://www.fldoe.org/eias/eiaspubs/word/gradgde.doc>

Florida Department of Education. (2010). *Florida Public High School Graduation Rates, 2009-10*. Tallahassee, FL: Florida Department of Education. Retrieved November 18, 2010, from <http://www.fldoe.org/eias/eiaspubs/word/gradrate0910.doc>

**Graduation and Dropout Rates for BCPS, 2005-06 to 2009-10**

~~November 18, 2010~~ **REVISED 11/19/10**

Page 7

Appendix A

*Description of Different Methods for Calculating Graduation Rates*

Graduation Rate Methods	Graduates	Non-Graduates	Students Not Included in the Calculation
<b>NGA Compact Rate (For use in 2009-10 and 2010-11)</b>	<ul style="list-style-type: none"> <li>• <b>Standard Diploma recipients</b></li> <li>• <b>Special Diploma recipients</b></li> </ul>	<ul style="list-style-type: none"> <li>• <b>Dropouts</b></li> <li>• <b>Certificate of Completion recipients</b></li> <li>• <b>Continuing enrollees who are not on-time graduates</b></li> <li>• <b>GED recipients</b></li> </ul>	<b>Students who transfer to:</b> <ul style="list-style-type: none"> <li>• <b>Home education</b></li> <li>• <b>Private schools</b></li> <li>• <b>DJJ sites</b></li> <li>• <b>Adult education</b></li> <li>• <b>Other public schools</b></li> </ul> <b>Deceased Students</b>
FDOE Rate	<ul style="list-style-type: none"> <li>• Standard Diploma recipients</li> <li>• Special Diploma recipients</li> <li>• GED recipients</li> </ul>	<ul style="list-style-type: none"> <li>• Dropouts</li> <li>• Certificate of Completion recipients</li> <li>• Continuing enrollees who are not on-time graduates</li> </ul>	Students who transfer to: <ul style="list-style-type: none"> <li>• Home education</li> <li>• Private schools</li> <li>• DJJ sites</li> <li>• Adult education</li> <li>• Other public schools</li> </ul> Deceased Students
NCLB Rate	<ul style="list-style-type: none"> <li>• Standard Diploma recipients</li> <li>• GED recipients</li> </ul>	<ul style="list-style-type: none"> <li>• Dropouts</li> <li>• Certificate of Completion recipients</li> <li>• Continuing enrollees who are not on-time graduates</li> <li>• Special Diploma recipients</li> </ul>	Students who transfer to: <ul style="list-style-type: none"> <li>• Home education</li> <li>• Private schools</li> <li>• DJJ sites</li> <li>• Adult education</li> <li>• Other public schools</li> </ul> Deceased Students

**Graduation and Dropout Rates for BCPS, 2005-06 to 2009-10**

November 18, 2010 REVISED 11/19/10

Page 8

Appendix B

*NGA Graduation Rates by Race, 2005-06 through 2009-10*

	White, Non- Hispanic	Black, Non- Hispanic	Hispanic	Asian/ Pacific Islander	American Indian/ Alaskan Native	Multiracial	Total
2005-06							
Broward	77.6	56.7	68.5	84.7	75.0	66.1	67.8
Hillsborough	81.9	63.3	67.5	89.4	73.1	80.6	74.5
Miami-Dade	71.8	48.6	60.5	82.3	77.8	73.3	58.7
Orange	81.6	59.0	62.4	85.8	87.0	69.5	70.6
Palm Beach	80.6	52.9	59.7	82.5	67.2	72.7	68.2
Florida	77.4	55.3	62.0	82.3	73.1	73.0	68.9
2006-07							
Broward	76.8	55.3	66.9	83.0	76.8	68.2	66.3
Hillsborough	83.0	65.1	70.7	89.6	81.6	76.8	76.3
Miami-Dade	76.1	54.1	64.9	82.8	72.2	73.8	63.4
Orange	80.1	58.5	63.4	81.6	74.1	72.3	69.7
Palm Beach	82.4	53.9	62.4	84.2	60.4	78.7	70.2
Florida	78.6	56.9	64.3	82.2	71.8	72.3	70.3
2007-08							
Broward	78.8	59.2	71.4	86.3	76.8	76.2	69.7
Hillsborough	82.9	68.1	71.0	91.5	78.1	80.4	77.0
Miami-Dade	75.1	56.4	67.4	81.9		76.7	65.4
Orange	83.0	64.0	68.8	83.3	85.9	73.1	73.6
Palm Beach	85.3	58.1	66.7	89.1	79.2	78.8	73.6
Florida	80.8	60.8	67.6	83.8	76.1	77.3	73.1
2008-09							
Broward	82.5	64.1	76.3	88.5	80.8	80.2	73.9
Hillsborough	87.5	73.4	77.8	93.4	82.1	86.6	82.2
Miami-Dade	77.6	59.9	70.3	83.3	75.0	80.3	68.5
Orange	82.8	65.1	74.6	89.7	88.9	82.4	75.9
Palm Beach	87.7	63.8	74.2	88.3	77.2	87.5	77.7
Florida	83.1	64.9	72.1	87.9	76.8	81.3	76.3
2009-10							
Broward	85.2	68.8	80.7	91.2	63.3	83.7	77.7
Hillsborough	87.9	75.1	76.5	94.4	85.0	86.3	82.3
Miami-Dade	82.2	63.7	73.9	86.2	78.9	81.4	72.1
Orange	87.1	69.8	75.0	92.1	77.2	81.2	79.0
Palm Beach	90.6	70.4	79.6	94.6	78.2	86.1	81.9
Florida	85.4	68.4	75.3	89.8	76.8	83.7	79.0

**Graduation and Dropout Rates for BCPS, 2005-06 to 2009-10**

November 18, 2010 REVISED 11/19/10

Page 9

Appendix C

*Dropout Rates by Race, 2005-06 through 2009-10*

	White, Non-Hispanic	Black, Non-Hispanic	Hispanic	Asian/Pacific Islander	American Indian/Alaskan Native	Multiracial	Total
2005-06							
Broward	1.7	3.9	2.2	1.3	0.6	2.2	2.7
Hillsborough	1.5	3.1	2.6	0.6	2.1	1.8	2.1
Miami-Dade	4.9	8.7	6.2	2.8	4.3	4.7	6.7
Orange	1.6	2.1	2.1	1.0	2.3	2.0	1.9
Palm Beach	1.8	4.4	4.0	0.8	2.9	2.1	3.0
Florida	2.6	4.7	4.3	1.5	3.1	2.6	3.5
2006-07							
Broward	2.1	4.7	2.5	1.9	2.9	2.5	3.2
Hillsborough	1.3	1.8	2.2	0.6	1.7	1.1	1.6
Miami-Dade	4.2	7.4	5.3	3.6	3.9	3.1	5.8
Orange	1.2	2.6	1.5	0.7	2.0	1.3	1.7
Palm Beach	2.9	6.8	5.0	1.7	3.7	2.4	4.4
Florida	2.4	4.7	3.9	1.7	2.6	2.3	3.3
2007-08							
Broward	1.2	2.9	1.6	0.7	3.1	1.4	2.0
Hillsborough	1.4	2.2	2.1	0.6	0.9	1.8	1.8
Miami-Dade	2.8	5.9	4.1	2.0	2.6	2.3	4.5
Orange	1.2	1.7	1.7	0.5	0.9	1.6	1.5
Palm Beach	2.4	6.2	4.2	1.0	3.1	2.4	3.9
Florida	1.9	3.6	3.1	1.0	2.1	1.8	2.6
2008-09							
Broward	1.3	2.9	1.6	0.6	3.0	2.2	2.1
Hillsborough	0.7	1.3	1.2	0.3	0.9	0.8	1.0
Miami-Dade	2.4	5.3	3.5	1.7	2.8	2.4	3.9
Orange	0.8	1.6	1.0	0.2	0.5	0.6	1.1
Palm Beach	1.4	4.2	2.5	0.9	3.1	2.2	2.6
Florida	1.6	3.4	2.5	0.8	2.3	1.6	2.3
2009-10							
Broward	1.0	2.5	0.9	0.5	1.5	0.9	1.6
Hillsborough	0.5	1.2	0.9	0.1	0.0	0.6	0.7
Miami-Dade	2.9	4.9	3.8	2.0	1.7	1.9	4.0
Orange	0.5	1.1	0.7	0.1	0.0	0.5	0.7
Palm Beach	1.6	4.5	2.9	2.1	3.4	2.9	2.8
Florida	1.4	2.9	2.5	0.8	2.2	1.4	2.0

**Graduation and Dropout Rates for BCPS, 2005-06 to 2009-10**

November 18, 2010 REVISED 11/19/10

Page 10

Appendix D

*Graduation and Dropout Rates by School, 2009-10*

School	Total Adjusted Cohort <i>N</i>	NGA Compact Graduation Rate <sup>1</sup>		FDOE Graduation Rate <sup>2</sup>		NCLB Graduation Rate <sup>3</sup>		Dropout Rate %
		<i>n</i>	%	<i>n</i>	%	<i>n</i>	%	
High Schools								
Anderson, Boyd H. High	459	373	81.3	373	81.3	364	79.3	<b>2.5</b>
Atlantic Technical High School	125	122	97.6	122	97.6	122	97.6	<b>0.0</b>
Broward Virtual Education	79	68	86.1	68	86.1	68	86.1	<b>0.3</b>
Coconut Creek High*	497	402	81.0	404	81.3	392	79.0	<b>0.1</b>
College Academy @ BCC Central	171	171	100.0	171	100.0	171	100.0	<b>0.0</b>
Cooper City High*	549	533	97.8	537	97.8	519	95.2	<b>0.0</b>
Coral Glades High	552	492	89.1	492	89.1	480	87.0	<b>0.1</b>
Coral Springs High*	502	448	89.4	449	89.4	441	88.0	<b>0.6</b>
Cypress Bay High	969	935	96.5	935	96.5	927	95.7	<b>0.1</b>
Deerfield Beach High*	585	465	79.6	466	79.7	458	78.4	<b>1.0</b>
Dillard High	338	302	89.3	302	89.3	292	86.4	<b>0.2</b>
Douglas, Stoneman M. High*	745	703	94.6	705	94.6	701	94.3	<b>0.0</b>
Ely, Blanche High*	471	389	82.9	391	83.0	377	80.0	<b>1.5</b>
Everglades High	732	645	88.1	645	88.1	631	86.2	<b>1.0</b>
Flanagan, Charles W. High	775	695	89.7	695	89.7	686	88.5	<b>0.0</b>
Fort Lauderdale High	362	299	82.6	299	82.6	298	82.3	<b>0.3</b>
Hallandale High	382	322	84.3	322	84.3	310	81.2	<b>0.4</b>
Hollywood Hills High*	451	384	85.5	386	85.6	379	84.4	<b>0.1</b>
McArthur High	544	478	87.9	480	88.2	474	87.1	<b>0.4</b>
McFatter, William Technical High School	139	136	97.8	136	97.8	136	97.8	<b>0.2</b>
Miramar High	647	606	93.7	606	93.7	594	91.8	<b>0.2</b>
Monarch High	529	458	86.6	458	86.6	451	85.3	<b>0.4</b>
Northeast High	491	387	78.8	387	78.8	387	78.8	<b>0.7</b>
Nova High	507	467	92.1	467	92.1	467	92.1	<b>0.6</b>
Piper High	713	594	83.3	594	83.3	593	83.2	<b>1.6</b>
Plantation High	502	415	82.7	415	82.7	407	81.1	<b>0.1</b>
Pompano Beach Instit. of Int'l. Studies	278	278	100.0	278	100.0	278	100.0	<b>0.0</b>
South Broward High	479	394	82.3	396	82.7	387	80.8	<b>0.2</b>
South Plantation High	622	535	86.0	535	86.0	520	83.6	<b>1.1</b>
Stranahan High	367	315	85.8	315	85.8	311	84.7	<b>0.5</b>
Taravella, J. P. High*	661	602	91.2	603	91.2	589	89.2	<b>0.1</b>
West Broward High	470	448	95.3	449	95.5	442	94.0	<b>0.1</b>
Western High*	670	611	93.7	629	93.9	597	91.6	<b>0.2</b>
Center Schools								
Bright Horizons School	23	9	39.1	9	39.1	0	0.0	<b>4.7</b>
Cross Creek School	12	2	16.7	3	25.0	3	25.0	<b>7.5</b>
Cypress Run Education Center	26	0	0.0	0	0.0	0	0.0	<b>8.4</b>
Dave Thomas Education Center	213	20	9.4	33	15.5	33	15.5	<b>16.2</b>

*(Appendix continues)*

**Graduation and Dropout Rates for BCPS, 2005-06 to 2009-10**

November 18, 2010 REVISED 11/19/10

Page 11

Appendix D (continued)

School	Total Adjusted Cohort	NGA Compact Graduation Rate <sup>1</sup>		FDOE Graduation Rate <sup>2</sup>		NCLB Graduation Rate <sup>3</sup>		Dropout Rate
	<i>N</i>	<i>n</i>	%	<i>n</i>	%	<i>n</i>	%	%
Hallandale Adult & Community Center	236	19	8.1	29	12.3	29	12.3	<b>15.3</b>
Lanier-James Education Center	44	1	2.3	1	2.3	1	2.3	<b>6.7</b>
Off Campus Learning Centers	648	49	7.6	49	7.6	49	7.6	<b>13.0</b>
Pine Ridge Education Center	43	0	0.0	0	0.0	0	0.0	<b>0.0</b>
Quest Center, The	18	7	38.9	7	38.9	0	0.0	<b>5.0</b>
Seagull School	106	16	15.1	17	16.0	17	16.0	<b>22.8</b>
Sheridan Technical Center	10	2	20.0	2	20.0	0	0.0	<b>5.1</b>
Sunset School	18	1	5.6	1	5.6	1	5.6	<b>3.5</b>
Whiddon-Rogers Education Center	242	27	11.2	30	12.4	30	12.4	<b>7.8</b>
Whispering Pines School	43	7	16.3	7	16.3	4	9.3	<b>6.4</b>
Wingate Oaks Center	18	7	38.9	7	38.9	0	0.0	<b>0.0</b>
Charter Schools								
Coral Springs Charter School High	194	190	97.9	190	97.9	190	97.9	<b>0.1</b>
Dolphin Park High Charter	195	25	12.8	25	12.8	25	12.8	<b>7.8</b>
Eagle Academy	74	46	62.2	46	62.2	46	62.2	<b>0.0</b>
International School of Broward	--	--	--	--	--	--	--	<b>0.8</b>
Lauderhill High Charter	136	10	7.4	10	7.4	10	7.4	<b>3.3</b>
Life Skills High	197	11	5.6	11	5.6	11	5.6	<b>24.4</b>
North University High Charter	171	22	12.9	22	12.9	22	12.9	<b>0.6</b>
Parkway Academy - High	65	54	83.1	54	83.1	54	83.1	<b>0.5</b>
Pembroke Pines Charter School - High	440	434	98.6	434	98.6	434	98.6	<b>0.0</b>
Somerset Academy High	135	109	80.7	109	80.7	109	80.7	<b>0.2</b>
Somerset Conservatory High	6	6	100.0	6	100.0	6	100.0	<b>0.0</b>

\* Schools that have Adult GED students who are removed from the total adjusted cohort in the NGA rate calculation.

<sup>1</sup> NGA Compact Graduation Rate defines GED students as non-graduates.

<sup>2</sup> FDOE Graduation Rate defines GED students and Special diploma students as graduates.

<sup>3</sup> NCLB Graduation Rate defines Special diploma students as non-graduates.

Note. "--" indicates that graduation and dropout data were removed for schools with less than 10 students in the cohort.

**Graduation and Dropout Rates for BCPS, 2005-06 to 2009-10**

~~November 18, 2010~~ REVISED 11/19/10

Page 12

Appendix E

*Comparison of NGA Graduation Rates by School, 2007-08 through 2009-10*

School	NGA Graduation Rate 2007-08 %	NGA Graduation Rate 2008-09 %	NGA Graduation Rate 2009-10 %	Change in NGA Graduation Rate 2008-09 to 2009-10
Anderson, Boyd H. High	62.4	69.2	81.3	12.1
Atlantic Technical High School	88.1	99.1	97.6	-1.5
Broward Virtual Education	90.2	69.6	86.1	16.5
Coconut Creek High	62.0	70.5	81.0	10.6
College Academy @ BCC Central	100.0	99.4	100.0	0.6
Cooper City High	90.7	96.4	97.8	1.4
Coral Glades High	86.2	86.2	89.1	2.9
Coral Springs High	86.0	83.8	89.4	5.6
Cypress Bay High	90.3	94.5	96.5	2.0
Deerfield Beach High	76.8	73.1	79.6	6.6
Dillard High	70.2	83.7	89.3	5.6
Douglas, Stoneman M. High	90.7	91.9	94.6	2.8
Ely, Blanche High	82.8	75.7	82.9	7.2
Everglades High	82.5	87.5	88.1	0.7
Flanagan, Charles W. High	86.6	91.0	89.7	-1.4
Fort Lauderdale High	83.0	78.7	82.6	3.9
Hallandale High	71.0	71.0	84.3	13.3
Hollywood Hills High	76.7	79.1	85.5	6.4
McArthur High	72.9	76.4	87.9	11.5
McFatter, William Technical High School	89.0	92.1	97.8	5.7
Miramar High	77.2	83.2	93.7	10.5
Monarch High	85.9	88.2	86.6	-1.6
Northeast High	76.5	78.5	78.8	0.3
Nova High	87.5	89.3	92.1	2.8
Piper High	77.3	79.7	83.3	3.6
Plantation High	71.4	71.3	82.7	11.4
Pompano Beach Instit. of Int'l. Studies	92.2	97.6	100.0	2.4
South Broward High	72.5	85.5	82.3	-3.2
South Plantation High	76.6	81.0	86.0	5.0
Stranahan High	74.5	73.7	85.8	12.1
Taravella, J. P. High	89.5	84.3	91.2	6.9
West Broward High	--	--	95.3	--
Western High	89.1	89.2	93.7	4.6
Center Schools				
Bright Horizons School	0.0	15.4	39.1	23.8
Cross Creek School	0.0	27.3	16.7	-10.6
Cypress Run Education Center	0.0	5.9	0.0	-5.9
Dave Thomas Education Center	14.4	7.8	9.4	1.6

*(Appendix continues)*

**Graduation and Dropout Rates for BCPS, 2005-06 to 2009-10**

November 18, 2010 REVISED 11/19/10

Page 13

Appendix E (*continued*)

School	NGA Graduation Rate 2007-08 %	NGA Graduation Rate 2008-09 %	NGA Graduation Rate 2009-10 %	Change in NGA Graduation Rate 2008-09 to 2009-10
Hallandale Adult & Community Center	6.3	6.0	8.1	2.1
Lanier-James Education Center	0.0	5.5	2.3	-3.2
Off Campus Learning Centers	19.6	8.4	7.6	-0.9
Pine Ridge Education Center	0.0	0.0	0.0	0.0
Quest Center, The	0.0	--	38.9	--
Seagull School	9.8	23.0	15.1	-7.9
Sheridan Technical Center	0.0	--	20.0	--
Sunset School	38.1	16.0	5.6	-10.4
Whiddon-Rogers Education Center	3.8	4.9	11.2	6.2
Whispering Pines School	0.0	22.6	16.3	-6.3
Wingate Oaks Center	0.0	0.0	38.9	38.9
Charter Schools				
Coral Springs Charter School High	84.0	94.6	97.9	3.3
Dolphin Park High Charter	--	17.5	12.8	-4.6
Eagle Academy	--	62.3	62.2	-0.1
International School of Broward	--	--	--	--
Lauderhill High Charter	--	9.8	7.4	-2.4
Life Skills High	51.0	25.2	5.6	-19.6
North University High Charter	--	20.7	12.9	-7.8
Parkway Academy - High	71.6	65.9	83.1	17.2
Pembroke Pines Charter School - High	89.1	95.3	98.6	3.3
Somerset Academy High	68.8	84.6	80.7	-3.9
Somerset Conservatory High	--	--	--	--

Note. "--" indicates that graduation and dropout data were removed for schools with less than 10 students in the cohort.

**Graduation and Dropout Rates for BCPS, 2005-06 to 2009-10**

~~November 18, 2010~~ REVISED 11/19/10

Page 14

Appendix F

*Comparison of Dropout Rates by School, 2007-08 through 2009-10*

School	Dropout Rate 2007-08 %	Dropout Rate 2008-09 %	Dropout Rate 2009-10 %	Change in Dropout Rate 2008-09 to 2009-10
Anderson, Boyd H. High	4.1	2.7	<b>2.5</b>	<b>-0.2</b>
Atlantic Technical High School	0.4	0.0	<b>0.0</b>	<b>0.0</b>
Broward Virtual Education	2.0	1.2	<b>0.3</b>	<b>-0.9</b>
Coconut Creek High	2.3	1.4	<b>0.1</b>	<b>-1.3</b>
College Academy @ BCC Central	0.0	0.0	<b>0.0</b>	<b>0.0</b>
Cooper City High	0.2	0.1	<b>0.0</b>	<b>-0.1</b>
Coral Glades High	1.1	0.2	<b>0.1</b>	<b>-0.1</b>
Coral Springs High	0.5	0.4	<b>0.6</b>	<b>0.2</b>
Cypress Bay High	0.9	0.0	<b>0.1</b>	<b>0.1</b>
Deerfield Beach High	2.2	2.3	<b>1.0</b>	<b>-1.3</b>
Dillard High	1.8	1.3	<b>0.2</b>	<b>-1.1</b>
Douglas, Stoneman M. High	0.1	0.0	<b>0.0</b>	<b>0.0</b>
Ely, Blanche High	2.9	2.3	<b>1.5</b>	<b>-0.8</b>
Everglades High	2.1	1.5	<b>1.0</b>	<b>-0.5</b>
Flanagan, Charles W. High	0.3	0.0	<b>0.0</b>	<b>0.0</b>
Fort Lauderdale High	0.1	0.5	<b>0.3</b>	<b>-0.2</b>
Hallandale High	0.4	0.0	<b>0.4</b>	<b>0.4</b>
Hollywood Hills High	0.0	0.0	<b>0.1</b>	<b>0.1</b>
McArthur High	1.2	0.9	<b>0.4</b>	<b>-0.5</b>
McFatter, William Technical High School	1.1	0.9	<b>0.2</b>	<b>-0.7</b>
Miramar High	0.3	0.2	<b>0.2</b>	<b>0.0</b>
Monarch High	0.4	0.3	<b>0.4</b>	<b>0.1</b>
Northeast High	0.4	1.2	<b>0.7</b>	<b>-0.6</b>
Nova High	1.5	0.9	<b>0.6</b>	<b>-0.3</b>
Piper High	1.6	2.1	<b>1.6</b>	<b>-0.5</b>
Plantation High	2.8	2.4	<b>0.1</b>	<b>-2.3</b>
Pompano Beach Instit. of Int'l. Studies	0.0	0.4	<b>0.0</b>	<b>-0.4</b>
South Broward High	0.4	0.2	<b>0.2</b>	<b>0.0</b>
South Plantation High	1.5	2.3	<b>1.1</b>	<b>-1.2</b>
Stranahan High	1.0	1.9	<b>0.5</b>	<b>-1.4</b>
Taravella, J. P. High	0.2	0.0	<b>0.1</b>	<b>0.1</b>
West Broward High	0.0	0.0	<b>0.1</b>	<b>0.1</b>
Western High	0.1	0.1	<b>0.2</b>	<b>0.1</b>
Center Schools				
Bright Horizons School	2.0	2.7	<b>4.7</b>	<b>2.0</b>
Cross Creek School	6.8	1.2	<b>7.5</b>	<b>6.3</b>
Cypress Run Education Center	2.1	6.5	<b>8.4</b>	<b>1.9</b>
Dave Thomas Education Center	12.6	14.1	<b>16.2</b>	<b>2.1</b>

*(Appendix continues)*

# Graduation and Dropout Rates for BCPS, 2005-06 to 2009-10

November 18, 2010 REVISED 11/19/10

Page 15

School	Dropout Rate 2007-08 %	Dropout Rate 2008-09 %	Dropout Rate 2009-10 %	Change in Dropout Rate 2008-09 to 2009-10
Hallandale Adult & Community Center	1.1	21.6	<b>15.3</b>	<b>-6.3</b>
Lanier-James Education Center	0.0	18.0	<b>6.7</b>	<b>-11.3</b>
Off Campus Learning Centers	20.4	20.9	<b>13.0</b>	<b>-7.9</b>
Pine Ridge Education Center	4.7	16.4	<b>0.0</b>	<b>-16.4</b>
Quest Center, The	28.6	5.9	<b>5.0</b>	<b>-0.9</b>
Seagull School	27.0	9.8	<b>22.8</b>	<b>13.0</b>
Sheridan Technical Center	--	--	<b>5.1</b>	--
Sunset School	4.0	15.7	<b>3.5</b>	<b>-12.2</b>
Whiddon-Rogers Education Center	13.4	6.4	<b>7.8</b>	<b>1.4</b>
Whispering Pines School	9.1	10.1	<b>6.4</b>	<b>-3.7</b>
Wingate Oaks Center	0.0	4.8	<b>0.0</b>	<b>-4.8</b>
<b>Charter Schools</b>				
Coral Springs Charter School High	0.0	0.0	<b>0.1</b>	<b>0.1</b>
Dolphin Park High Charter	0.0	14.9	<b>7.8</b>	<b>-7.1</b>
Eagle Academy	0.0	0.0	<b>0.0</b>	<b>0.0</b>
International School of Broward	--	--	<b>0.8</b>	--
Lauderhill High Charter	0.0	0.6	<b>3.3</b>	<b>2.7</b>
Life Skills High	21.9	21.6	<b>24.4</b>	<b>2.8</b>
North University High Charter	0.0	7.9	<b>0.6</b>	<b>-7.3</b>
Parkway Academy - High	2.5	2.4	<b>0.5</b>	<b>-1.9</b>
Pembroke Pines Charter School - High	0.1	0.0	<b>0.0</b>	<b>0.0</b>
Somerset Academy High	1.3	1.8	<b>0.2</b>	<b>-1.7</b>
Somerset Conservatory High	0.0	0.0	<b>0.0</b>	<b>0.0</b>

Note. "--" indicates that graduation and dropout data were removed for schools with less than 10 students in the cohort.

# Data Report

## Florida Public High School Graduation Rates, 2009-10

Series 2011-10D

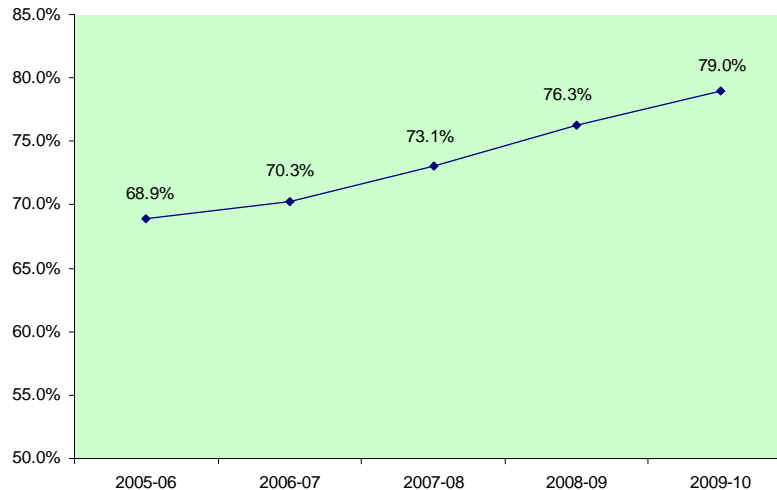
November 2010

### Florida's Change to Reporting the NGA Compact Graduation Rate

In September 2009, the Florida State Board of Education (SBE) approved the state's new high school grading formula, which incorporates graduation rates into the grading of high schools. The graduation rate the SBE chose to use in the new grading formula is the state's National Governors Association (NGA) Compact rate, which includes standard and special diplomas but excludes GEDs, both regular and adult. Florida is using this rate in place of its regular rate because the U.S. Department of Education (USED) is moving all states to adopt a uniform calculation method by 2010-11, that includes standard diplomas but excludes GEDs and special diplomas. Using the NGA rate now helps to transition Florida to the new federal rate when it becomes effective.

Florida's NGA high school graduation rate has consistently increased during the past five years, fluctuating from 68.9 percent in 2005-06 to 79.0 percent in 2009-10.

**Figure 1: Four-Year NGA Graduation Rate, 2005-06 through 2009-10**



Florida calculates a cohort graduation rate. A cohort is defined as a group of students on the same schedule to graduate. The graduation rate measures the percentage of students who graduate within four years of their first enrollment in ninth grade. Subsequent to their enrollment in ninth grade, exiting transfers and deceased students are removed from the calculation. Entering transfer students are included in the count of the class with which they are scheduled to graduate, based on their date of enrollment. NGA graduation rates have been reported in the No Child Left Behind (NCLB) School Public Accountability Reports (SPARs) since 2005-06 and are provided on-line at <http://doeweb-prd.doe.state.fl.us/eds/nclb spar/index.cfm>. District level graduation rates are provided in tables 6 through 12.

If you have questions regarding the content of this publication, please contact the Florida Department of Education, Office of Education Information and Accountability Services at (850) 245-0400, or send e-mail to [askeias@fldoe.org](mailto:askeias@fldoe.org).



## Types of Graduation Rates Calculated in Florida

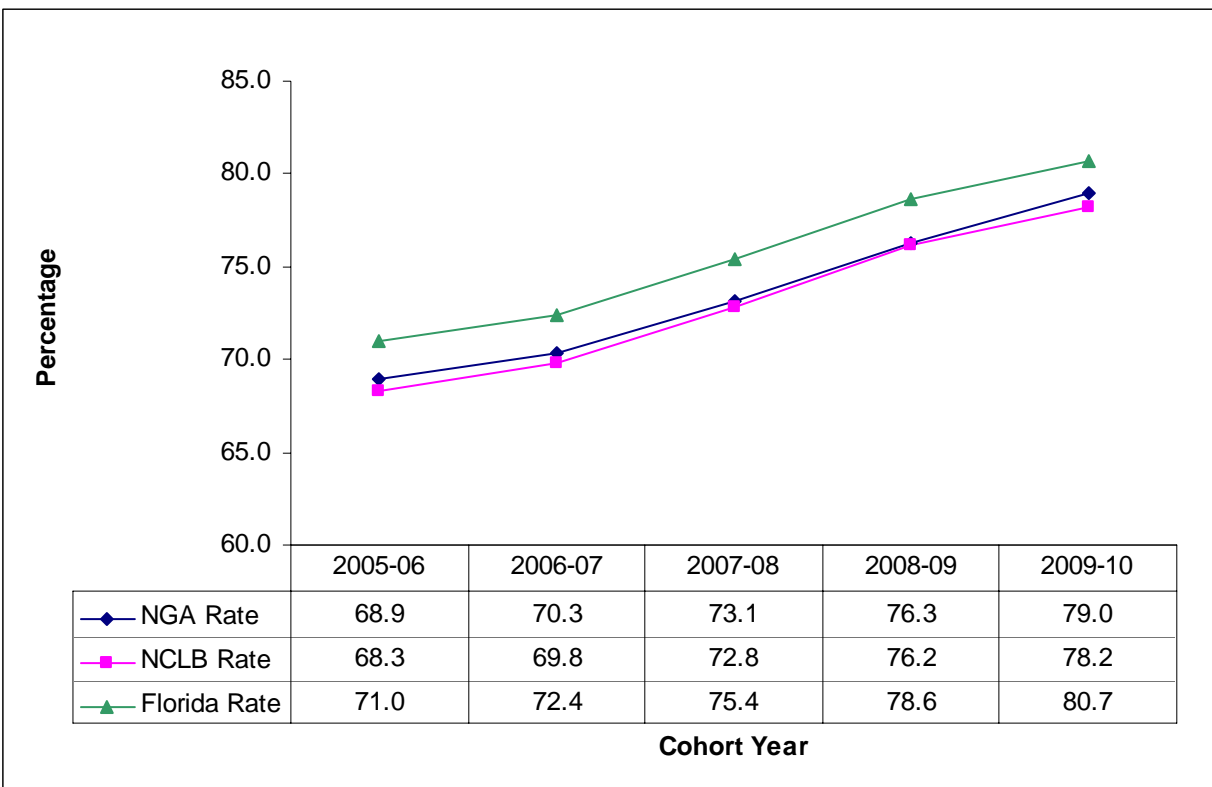
Florida currently calculates three graduation rates: the NGA rate, detailed above, was mandated by the Florida Legislature in 2006 to meet an agreement with the National Governors Association Compact and was first implemented using the data for 2004-05 and reported in the 2005-06 NCLB SPARs; a rate for No Child Left Behind (NCLB) reporting purposes, implemented in 2001; and Florida's regular rate, which has been calculated consistently since 1998-99.

All three versions use the cohort method of tracking individual students in and out of the system from their entrance into the ninth grade through completion four years later. However, each rate defines a graduate differently. The differences between the NGA rate, the NCLB rate, and Florida's regular graduation rate are as follows:

- The NGA graduation rate counts as graduates recipients of standard and special diplomas but not GEDs.
- The NCLB graduation rate counts as graduates recipients of standard diplomas and GEDs awarded to high school students but not special diplomas and GEDs awarded to adult students.
- Florida's regular rate counts all diploma recipients as graduates. This includes standard and special diplomas and all GEDs.

The chart below shows an increase for all three versions of the graduation rate from 2005-06 to 2009-10.

**Figure 2: Florida's Three Graduation Rates, 2005-06 through 2009-10**



## Graduation Rates by Race:

**Table 1: NGA Graduation Rates by Race, 2005-06 through 2009-10**

	White, Non-Hispanic	Black, Non-Hispanic	Hispanic	Asian/Pacific Islander	American Indian/Alaskan Native	Multiracial	Total
<b>2005-06</b>	77.4%	55.3%	62.0%	82.3%	73.1%	73.0%	68.9%
<b>2006-07</b>	78.6%	56.9%	64.3%	82.2%	71.8%	72.3%	70.3%
<b>2007-08</b>	80.8%	60.8%	67.6%	83.8%	76.1%	77.3%	73.1%
<b>2008-09</b>	83.1%	64.9%	72.1%	87.9%	76.8%	81.3%	76.3%
<b>2009-10</b>	85.4%	68.4%	75.3%	89.8%	76.8%	83.7%	79.0%

**Table 2: NCLB Graduation Rates by Race, 2005-06 through 2009-10**

	White, Non-Hispanic	Black, Non-Hispanic	Hispanic	Asian/Pacific Islander	American Indian/Alaskan Native	Multiracial	Total
<b>2005-06</b>	77.6%	52.8%	61.2%	82.5%	73.1%	73.9%	68.3%
<b>2006-07</b>	78.9%	54.6%	63.6%	82.4%	72.3%	73.8%	69.8%
<b>2007-08</b>	81.4%	58.7%	67.1%	83.8%	76.9%	78.2%	72.8%
<b>2008-09</b>	83.8%	63.3%	71.6%	88.1%	77.4%	82.4%	76.2%
<b>2009-10</b>	85.2%	66.6%	74.6%	89.6%	77.9%	83.5%	78.2%

**Table 3: Regular Graduation Rates by Race, 2005-06 through 2009-10**

	White, Non-Hispanic	Black, Non-Hispanic	Hispanic	Asian/Pacific Islander	American Indian/Alaskan Native	Multiracial	Total
<b>2005-06</b>	79.9%	56.9%	63.7%	83.2%	75.7%	75.9%	71.0%
<b>2006-07</b>	81.0%	58.7%	66.0%	83.2%	74.7%	75.4%	72.4%
<b>2007-08</b>	83.6%	62.5%	69.1%	84.2%	80.3%	80.5%	75.4%
<b>2008-09</b>	86.0%	66.7%	73.5%	88.9%	79.7%	83.7%	78.6%
<b>2009-10</b>	87.4%	70.1%	76.4%	90.4%	79.9%	85.3%	80.7%

## Florida's Rates versus National Graduation Rate Rankings

Many national organizations, including the USED, and other interest groups **estimate** graduation rates, which usually differ significantly from one another. It can be quite confusing and often misleading when various organizations release national graduation rankings, but they do not match the rate Florida released. Student database systems and data collection methodologies vary from state to state, and national studies must rely on the lowest common denominators available across all states to make comparisons. Additionally, not all states have fully implemented a longitudinal data system, as Florida has. This means that national-level studies do not follow the precise methodology for calculating graduation rates that Florida uses, and are, therefore, merely estimates of graduating students rather than exact counts and percentages.

The USED mandated in October 2008 that all states implement a "uniform, comparable graduation rate," which is cohort-based, by 2010-11. As stated earlier, Florida has calculated a cohort graduation rate since 1998-99 and is well positioned to meet this mandate. As other states transition to the cohort method and the "uniform" graduation rate, calculations will be consistent across states and more valid national comparisons can be made.

## Graduation Rates versus Dropout Rates

Further confusion occurs when comparing the graduation rates to the dropout rates. These rates are not inverses of one another. The differences are as follows:

The rates apply to different periods of measurement.

- Graduation rate is a four-year, cohort-based indicator.
- Dropout rate is a single-year indicator.

The rates apply to different populations.

- Graduation rate tracks the progress of a group of students who entered the same grade at the same time over a four-year period.
- Dropout rate tracks **all** ninth- through twelfth-grade students in a **single** year.

Florida's NGA graduation rate is 79.0 percent, but that doesn't mean that 21.0 percent of the cohort are dropouts. In a cohort students can be classified as graduates, dropouts, and non-graduates. The non-graduates are those students who have been retained and are still in school or students who received certificates of completion.

## Dropout Rates

Florida's dropout rate is the percentage of ninth- through twelfth-grade dropouts compared to the ninth- through twelfth-grade total, year-long student membership. A dropout is defined as a student who withdraws from school for any of several reasons without transferring to another school, home education program, or adult education program. The definitions for a dropout are listed below in Table 5.

The 2009-10 dropout rate for Florida has declined for the fourth year in a row. District-level dropout rates are provided in Table 13.

**Table 4: Dropouts by Race, 2005-06 through 2009-10**

	White, Non-Hispanic	Black, Non-Hispanic	Hispanic	Asian/Pacific Islander	American Indian/Alaskan Native	Multiracial	Total
<b>2005-06</b>	2.6%	4.7%	4.3%	1.5%	3.1%	2.6%	3.5%
<b>2006-07</b>	2.4%	4.7%	3.9%	1.7%	2.6%	2.3%	3.3%
<b>2007-08</b>	1.9%	3.6%	3.1%	1.0%	2.1%	1.8%	2.6%
<b>2008-09</b>	1.6%	3.4%	2.5%	0.8%	2.3%	1.6%	2.3%
<b>2009-10</b>	1.4%	2.9%	2.5%	0.8%	2.2%	1.4%	2.0%

**Table 5: Dropout Withdrawal Codes and Definitions**

DNE - Any PK-12 student who was expected to attend a school but did not enter as expected for unknown reasons
W05 - Any student age 16 or older who leaves school voluntarily with no intention of returning
W13 - Any PK-12 student withdrawn from school due to court action
W15 - Any PK-12 student who is withdrawn from school due to nonattendance
W18 - Any PK-12 student who withdraws from school due to medical reasons
W21 - Any PK-12 student who is withdrawn from school due to being expelled
W22 - Any PK-12 student whose whereabouts is unknown
W23 - Any PK-12 student who withdraws from school for any reason other than W01 - W22 or W24 - W27

**Table 6: NGA, NCLB, and Florida Graduation Rates, by District 2009-10**

District	NGA	NCLB	Florida
01 Alachua	76.4%	73.2%	76.6%
02 Baker	75.9%	74.1%	77.3%
03 Bay	81.1%	79.1%	81.9%
04 Bradford	63.6%	66.9%	71.1%
05 Brevard	95.3%	93.2%	95.8%
06 Broward	77.7%	76.6%	77.9%
07 Calhoun	88.2%	86.8%	89.0%
08 Charlotte	79.3%	80.3%	82.4%
09 Citrus	82.9%	83.7%	85.6%
10 Clay	78.4%	84.4%	85.9%
11 Collier	79.4%	76.9%	80.4%
12 Columbia	87.0%	78.8%	88.5%
13 Dade	72.1%	72.0%	72.6%
14 DeSoto	61.0%	64.5%	69.0%
15 Dixie	66.4%	65.8%	66.4%
16 Duval	66.6%	69.9%	73.1%
17 Escambia	77.9%	72.4%	78.8%
18 Flagler	83.5%	80.9%	83.5%
19 Franklin	78.7%	72.0%	81.6%
20 Gadsden	58.1%	60.2%	63.4%
21 Gilchrist	92.1%	92.7%	94.9%
22 Glades	63.6%	63.6%	66.2%
23 Gulf	95.5%	95.5%	96.2%
24 Hamilton	63.0%	60.1%	65.5%
25 Hardee	75.1%	72.3%	76.0%
26 Hendry	81.4%	79.2%	81.9%
27 Hernando	79.0%	82.6%	84.9%
28 Highlands	73.4%	75.0%	78.1%
29 Hillsborough	82.3%	81.7%	84.4%
30 Holmes	80.6%	80.2%	81.9%
31 Indian River	82.1%	85.6%	87.2%
32 Jackson	81.5%	84.7%	87.9%
33 Jefferson	50.8%	49.2%	51.6%
34 Lafayette	88.3%	84.4%	88.3%
35 Lake	80.8%	79.0%	82.3%
36 Lee	80.3%	78.0%	80.6%
37 Leon	77.6%	76.6%	80.2%
38 Levy	70.7%	69.7%	71.4%
39 Liberty	75.3%	87.6%	91.2%
40 Madison	65.0%	72.2%	79.7%
41 Manatee	76.4%	74.4%	79.2%
42 Marion	77.8%	76.4%	79.5%
43 Martin	89.8%	88.8%	90.4%
44 Monroe	85.4%	82.6%	86.3%
45 Nassau	89.5%	89.2%	91.8%
46 Okaloosa	89.0%	89.9%	91.9%
47 Okeechobee	64.9%	68.7%	71.7%
48 Orange	79.0%	77.9%	79.6%
49 Osceola	83.3%	79.5%	83.5%
50 Palm Beach	81.9%	80.2%	82.9%
51 Pasco	81.9%	84.2%	87.2%
52 Pinellas	77.7%	77.0%	78.8%
53 Polk	73.2%	71.2%	75.9%
54 Putnam	74.6%	71.2%	82.0%
55 St. Johns	92.1%	90.5%	92.6%
56 St. Lucie	79.1%	77.6%	79.1%
57 Santa Rosa	88.3%	86.2%	88.8%
58 Sarasota	84.3%	84.1%	86.1%
59 Seminole	93.8%	92.6%	94.2%
60 Sumter	86.9%	84.0%	87.7%
61 Suwannee	62.7%	72.6%	74.5%
62 Taylor	73.7%	70.0%	74.7%
63 Union	76.4%	75.8%	76.4%
64 Volusia	81.2%	78.7%	81.9%
65 Wakulla	82.7%	81.7%	84.9%
66 Walton	83.2%	82.2%	85.1%
67 Washington	84.4%	82.9%	84.4%
68 Deaf/Blind	88.8%	55.0%	88.8%
69 Dozier/Okee	#	60.0%	60.0%
72 FAU	100.0%	100.0%	100.0%
73 FSU	97.9%	97.9%	97.9%
74 FAMU	94.6%	94.6%	94.6%
75 UF	96.5%	96.5%	96.5%
<b>FLORIDA</b>	<b>79.0%</b>	<b>78.2%</b>	<b>80.7%</b>

\*Source: 2009-10 Florida Department of Education (FL DOE) cohort graduation data as of 10/27/10.

A pound sign (#) replaces data when the cohort is fewer than ten students. A blank cell indicates no students in the cohort.

**Table 7: NGA Graduation Rates, 2005-06 through 2009-10\***

	District	2005-06	2006-07	2007-08	2008-09	2009-10
01	Alachua	66.3%	65.2%	67.6%	66.5%	76.4%
02	Baker	68.0%	76.3%	74.9%	85.3%	75.9%
03	Bay	75.8%	76.8%	76.1%	77.1%	81.1%
04	Bradford	64.4%	68.7%	70.3%	72.1%	63.6%
05	Brevard	89.5%	91.2%	92.5%	94.7%	95.3%
06	Broward	67.8%	66.3%	69.7%	73.9%	77.7%
07	Calhoun	87.4%	80.4%	92.1%	91.6%	88.2%
08	Charlotte	74.1%	75.9%	78.5%	77.0%	79.3%
09	Citrus	70.0%	74.3%	75.7%	81.8%	82.9%
10	Clay	68.3%	68.6%	70.5%	75.3%	78.4%
11	Collier	73.3%	71.9%	74.5%	77.2%	79.4%
12	Columbia	62.8%	67.2%	73.0%	82.0%	87.0%
13	Dade	58.7%	63.4%	65.4%	68.5%	72.1%
14	DeSoto	63.9%	62.8%	61.2%	64.7%	61.0%
15	Dixie	70.4%	75.0%	76.6%	74.0%	66.4%
16	Duval	57.4%	59.8%	61.3%	64.5%	66.6%
17	Escambia	73.7%	74.0%	74.5%	77.0%	77.9%
18	Flagler	78.4%	77.1%	80.9%	81.3%	83.5%
19	Franklin	60.4%	55.0%	54.0%	77.9%	78.7%
20	Gadsden	41.8%	46.6%	52.5%	60.3%	58.1%
21	Gilchrist	76.1%	84.0%	90.2%	94.7%	92.1%
22	Glades	57.3%	50.6%	35.6%	60.0%	63.6%
23	Gulf	83.7%	85.1%	89.0%	89.4%	95.5%
24	Hamilton	52.5%	50.4%	56.4%	58.6%	63.0%
25	Hardee	69.7%	72.1%	65.6%	71.9%	75.1%
26	Hendry	70.2%	65.0%	72.5%	73.5%	81.4%
27	Hernando	72.9%	72.8%	74.3%	75.4%	79.0%
28	Highlands	68.0%	69.3%	67.4%	73.3%	73.4%
29	Hillsborough	74.5%	76.3%	77.0%	82.2%	82.3%
30	Holmes	68.3%	70.6%	77.0%	80.3%	80.6%
31	Indian River	81.0%	78.7%	80.6%	82.1%	82.1%
32	Jackson	85.5%	80.1%	83.6%	80.8%	81.5%
33	Jefferson	50.0%	58.1%	47.3%	53.8%	50.8%
34	Lafayette	81.7%	77.8%	92.0%	79.7%	88.3%
35	Lake	67.5%	69.5%	75.0%	77.0%	80.8%
36	Lee	69.3%	70.6%	76.9%	77.6%	80.3%
37	Leon	72.5%	72.7%	73.5%	74.3%	77.6%
38	Levy	63.8%	64.3%	67.3%	67.0%	70.7%
39	Liberty	52.9%	57.9%	69.2%	74.4%	75.3%
40	Madison	55.8%	59.6%	61.5%	73.3%	65.0%
41	Manatee	70.9%	73.4%	73.3%	74.5%	76.4%
42	Marion	63.1%	65.4%	67.1%	73.7%	77.8%
43	Martin	90.7%	88.9%	90.3%	92.2%	89.8%
44	Monroe	71.5%	76.5%	78.5%	81.5%	85.4%
45	Nassau	71.4%	70.2%	70.9%	76.3%	89.5%
46	Okaloosa	81.2%	80.9%	87.5%	88.7%	89.0%
47	Okeechobee	57.2%	57.9%	62.4%	64.4%	64.9%
48	Orange	70.6%	69.7%	73.6%	75.9%	79.0%
49	Osceola	63.2%	65.5%	69.3%	78.4%	83.3%
50	Palm Beach	68.2%	70.2%	73.6%	77.7%	81.9%
51	Pasco	68.1%	67.8%	73.4%	77.8%	81.9%
52	Pinellas	66.1%	66.3%	71.4%	77.2%	77.7%
53	Polk	65.4%	67.2%	69.9%	71.6%	73.2%
54	Putnam	68.4%	71.0%	71.1%	70.4%	74.6%
55	St. Johns	75.7%	76.7%	87.1%	89.3%	92.1%
56	St. Lucie	72.7%	75.3%	77.9%	81.0%	79.1%
57	Santa Rosa	84.2%	85.9%	86.4%	88.1%	88.3%
58	Sarasota	75.6%	78.8%	81.5%	80.5%	84.3%
59	Seminole	84.2%	85.8%	90.2%	92.0%	93.8%
60	Sumter	74.5%	77.6%	81.6%	83.2%	86.9%
61	Suwannee	62.5%	67.9%	63.2%	61.7%	62.7%
62	Taylor	76.1%	74.7%	70.6%	72.9%	73.7%
63	Union	74.5%	81.7%	71.4%	80.7%	76.4%
64	Volusia	80.2%	80.9%	80.3%	80.5%	81.2%
65	Wakulla	74.6%	78.5%	78.1%	80.0%	82.7%
66	Walton	75.2%	72.0%	76.5%	79.4%	83.2%
67	Washington	69.4%	70.4%	82.7%	84.5%	84.4%
68	Deaf/Blind	89.5%	89.5%	95.1%	91.8%	88.8%
69	Dozier/Okee	3.0%	5.6%	4.9%	9.1%	#
72	FAU	100.0%	100.0%	100.0%	100.0%	100.0%
73	FSU	91.5%	95.7%	93.5%	97.8%	97.9%
74	FAMU	78.9%	78.1%	67.5%	93.5%	94.6%
75	UF	98.0%	93.8%	95.9%	95.6%	96.5%
	<b>FLORIDA</b>	<b>68.9%</b>	<b>70.3%</b>	<b>73.1%</b>	<b>76.3%</b>	<b>79.0%</b>

\*Source: 2009-10 Florida Department of Education (FL DOE) cohort graduation data as of 10/27/10.  
A pound sign (#) replaces data when the cohort is fewer than ten students. A blank cell indicates no students in the cohort.

**Table 8: NCLB Graduation Rates, 2005-06 through 2009-10\***

	District	2005-06	2006-07	2007-08	2008-09	2009-10
01	Alachua	66.4%	63.1%	64.7%	63.9%	73.2%
02	Baker	70.1%	74.4%	74.9%	83.5%	74.1%
03	Bay	74.2%	75.3%	76.3%	77.9%	79.1%
04	Bradford	62.4%	63.4%	68.3%	72.1%	66.9%
05	Brevard	88.5%	89.6%	90.8%	93.1%	93.2%
06	Broward	66.3%	65.0%	68.6%	73.1%	76.6%
07	Calhoun	81.8%	79.0%	89.3%	85.3%	86.8%
08	Charlotte	76.6%	78.9%	82.6%	82.6%	80.3%
09	Citrus	71.1%	73.3%	74.9%	81.7%	83.7%
10	Clay	72.2%	73.6%	75.6%	79.8%	84.4%
11	Collier	70.4%	70.1%	71.9%	74.5%	76.9%
12	Columbia	61.2%	68.1%	72.3%	80.3%	78.8%
13	Dade	58.5%	63.0%	65.0%	68.2%	72.0%
14	DeSoto	67.0%	67.6%	62.4%	69.0%	64.5%
15	Dixie	69.6%	71.7%	72.4%	72.7%	65.8%
16	Duval	59.0%	61.3%	62.9%	66.6%	69.9%
17	Escambia	69.5%	70.4%	70.1%	73.2%	72.4%
18	Flagler	75.9%	72.4%	76.6%	77.2%	80.9%
19	Franklin	60.4%	54.1%	56.3%	82.6%	72.0%
20	Gadsden	41.5%	51.5%	54.8%	62.6%	60.2%
21	Gilchrist	78.2%	85.6%	89.0%	95.3%	92.7%
22	Glades	57.3%	59.7%	41.4%	61.0%	63.6%
23	Gulf	80.3%	84.5%	86.9%	88.8%	95.5%
24	Hamilton	61.5%	63.0%	58.3%	53.6%	60.1%
25	Hardee	66.1%	66.4%	61.9%	66.0%	72.3%
26	Hendry	65.2%	63.1%	68.4%	71.4%	79.2%
27	Hernando	70.4%	70.5%	73.9%	75.4%	82.6%
28	Highlands	64.2%	67.7%	65.1%	73.2%	75.0%
29	Hillsborough	74.7%	76.4%	77.8%	82.4%	81.7%
30	Holmes	66.7%	72.2%	82.3%	85.2%	80.2%
31	Indian River	80.2%	80.1%	80.8%	83.8%	85.6%
32	Jackson	80.5%	76.4%	82.8%	79.7%	84.7%
33	Jefferson	50.0%	53.5%	46.2%	50.0%	49.2%
34	Lafayette	74.4%	77.8%	88.0%	78.1%	84.4%
35	Lake	67.0%	69.8%	75.1%	77.9%	79.0%
36	Lee	68.0%	68.9%	74.7%	75.6%	78.0%
37	Leon	72.9%	76.2%	77.5%	77.8%	76.6%
38	Levy	60.8%	61.7%	70.4%	66.3%	69.7%
39	Liberty	81.8%	79.7%	87.9%	86.0%	87.6%
40	Madison	49.2%	57.7%	61.5%	75.6%	72.2%
41	Manatee	71.0%	72.4%	73.8%	74.3%	74.4%
42	Marion	65.4%	68.7%	69.0%	75.3%	76.4%
43	Martin	90.7%	87.3%	89.6%	90.4%	88.8%
44	Monroe	72.7%	79.4%	81.8%	83.7%	82.6%
45	Nassau	79.2%	76.7%	76.9%	82.0%	89.2%
46	Okaloosa	84.5%	83.2%	89.7%	90.0%	89.9%
47	Okeechobee	59.4%	60.7%	67.3%	66.2%	68.7%
48	Orange	69.0%	68.6%	72.9%	75.3%	77.9%
49	Osceola	60.3%	62.3%	65.6%	75.6%	79.5%
50	Palm Beach	66.9%	69.5%	73.0%	78.0%	80.2%
51	Pasco	69.6%	69.2%	75.5%	79.8%	84.2%
52	Pinellas	65.2%	65.9%	71.9%	78.3%	77.0%
53	Polk	63.1%	65.3%	68.1%	70.0%	71.2%
54	Putnam	67.3%	70.7%	70.1%	69.9%	71.2%
55	St. Johns	75.4%	75.6%	87.4%	89.1%	90.5%
56	St. Lucie	71.2%	73.7%	76.0%	79.5%	77.6%
57	Santa Rosa	82.2%	84.1%	85.1%	85.4%	86.2%
58	Sarasota	76.2%	79.7%	82.2%	82.7%	84.1%
59	Seminole	83.6%	85.7%	89.5%	92.0%	92.6%
60	Sumter	71.3%	77.2%	77.3%	80.3%	84.0%
61	Suwannee	63.5%	70.4%	67.2%	69.7%	72.6%
62	Taylor	74.3%	70.0%	69.7%	70.6%	70.0%
63	Union	75.8%	79.6%	69.8%	76.3%	75.8%
64	Volusia	76.7%	76.7%	77.1%	76.7%	78.7%
65	Wakulla	72.1%	75.2%	75.8%	79.3%	81.7%
66	Walton	74.9%	72.2%	80.0%	80.5%	82.2%
67	Washington	69.0%	69.5%	81.1%	83.3%	82.9%
68	Deaf/Blind	37.2%	51.2%	49.4%	54.1%	55.0%
69	Dozier/Okee	52.6%	49.4%	45.1%	60.0%	60.0%
72	FAU	100.0%	100.0%	100.0%	100.0%	100.0%
73	FSU	95.0%	97.9%	98.6%	98.5%	97.9%
74	FAMU	81.6%	78.1%	70.0%	93.5%	94.6%
75	UF	98.0%	93.8%	95.9%	95.6%	96.5%
	<b>FLORIDA</b>	<b>68.3%</b>	<b>69.8%</b>	<b>72.8%</b>	<b>76.2%</b>	<b>78.2%</b>

\*Source: 2009-10 Florida Department of Education (FL DOE) cohort graduation data as of 10/27/10.

A pound sign (#) replaces data when the cohort is fewer than ten students. A blank cell indicates no students in the cohort.

**Table 9: Graduation Rates, Florida's Calculation, 2005-06 through 2009-10\***

	District	2005-06	2006-07	2007-08	2008-09	2009-10
01	Alachua	69.8%	68.2%	68.3%	66.7%	76.6%
02	Baker	73.1%	77.9%	77.5%	87.5%	77.3%
03	Bay	77.5%	78.7%	78.5%	79.4%	81.9%
04	Bradford	69.5%	70.7%	75.4%	78.4%	71.1%
05	Brevard	90.7%	92.1%	93.3%	95.3%	95.8%
06	Broward	67.8%	66.3%	68.8%	74.2%	77.9%
07	Calhoun	89.6%	82.5%	93.3%	92.2%	89.0%
08	Charlotte	78.0%	81.6%	84.6%	84.3%	82.4%
09	Citrus	73.2%	76.1%	77.8%	84.6%	85.6%
10	Clay	73.8%	75.3%	77.6%	81.7%	85.9%
11	Collier	74.7%	73.6%	75.8%	78.7%	80.4%
12	Columbia	67.4%	74.1%	77.6%	87.8%	88.5%
13	Dade	59.2%	63.9%	65.8%	68.9%	72.6%
14	DeSoto	70.0%	70.5%	66.5%	72.0%	69.0%
15	Dixie	70.4%	75.3%	76.6%	74.0%	66.4%
16	Duval	60.5%	64.3%	65.9%	69.6%	73.1%
17	Escambia	74.8%	75.2%	75.7%	77.8%	78.8%
18	Flagler	78.4%	77.1%	80.9%	81.3%	83.5%
19	Franklin	60.7%	56.5%	57.8%	86.0%	81.6%
20	Gadsden	43.9%	53.3%	56.1%	64.2%	63.4%
21	Gilchrist	78.7%	86.0%	92.1%	96.5%	94.9%
22	Glades	63.4%	62.3%	43.7%	63.0%	66.2%
23	Gulf	83.8%	85.1%	89.1%	89.5%	96.2%
24	Hamilton	63.2%	68.1%	60.0%	58.6%	65.5%
25	Hardee	70.3%	72.7%	66.5%	72.6%	76.0%
26	Hendry	72.1%	68.3%	74.0%	76.5%	81.9%
27	Hernando	74.1%	75.1%	76.9%	78.5%	84.9%
28	Highlands	69.6%	73.0%	71.2%	76.3%	78.1%
29	Hillsborough	77.3%	79.1%	80.0%	84.6%	84.4%
30	Holmes	71.3%	76.2%	84.3%	87.3%	81.9%
31	Indian River	84.7%	82.9%	83.5%	86.1%	87.2%
32	Jackson	87.8%	81.7%	85.7%	85.0%	87.9%
33	Jefferson	53.5%	64.2%	57.5%	62.8%	51.6%
34	Lafayette	81.7%	79.4%	92.0%	79.7%	88.3%
35	Lake	70.1%	73.5%	79.3%	80.8%	82.3%
36	Lee	71.5%	71.8%	77.8%	78.3%	80.6%
37	Leon	76.2%	79.0%	81.2%	81.0%	80.2%
38	Levy	65.6%	66.4%	72.1%	67.9%	71.4%
39	Liberty	89.7%	90.7%	95.9%	93.8%	91.2%
40	Madison	58.5%	66.9%	69.5%	80.4%	79.7%
41	Manatee	76.9%	78.7%	79.3%	79.4%	79.2%
42	Marion	71.8%	74.9%	73.8%	78.9%	79.5%
43	Martin	93.2%	91.2%	91.9%	93.9%	90.4%
44	Monroe	75.5%	83.6%	85.5%	87.4%	86.3%
45	Nassau	81.8%	80.7%	81.1%	84.8%	91.8%
46	Okaloosa	86.0%	84.7%	90.5%	91.7%	91.9%
47	Okeechobee	62.8%	64.0%	70.7%	69.3%	71.7%
48	Orange	72.2%	71.7%	75.6%	77.4%	79.6%
49	Osceola	64.5%	66.6%	67.5%	79.2%	83.5%
50	Palm Beach	69.3%	71.8%	75.6%	80.1%	82.9%
51	Pasco	74.4%	73.7%	79.5%	83.5%	87.2%
52	Pinellas	67.0%	67.3%	74.4%	80.6%	78.8%
53	Polk	68.8%	70.6%	73.6%	74.7%	75.9%
54	Putnam	76.4%	78.6%	78.0%	78.4%	82.0%
55	St. Johns	76.7%	78.3%	89.4%	90.8%	92.6%
56	St. Lucie	72.7%	75.4%	77.9%	81.1%	79.1%
57	Santa Rosa	85.5%	86.8%	87.6%	89.0%	88.8%
58	Sarasota	79.9%	83.5%	86.0%	85.1%	86.1%
59	Seminole	83.4%	86.7%	91.1%	93.0%	94.2%
60	Sumter	76.3%	81.1%	83.5%	85.0%	87.7%
61	Suwannee	65.1%	74.4%	71.6%	72.4%	74.5%
62	Taylor	78.3%	77.4%	74.0%	75.1%	74.7%
63	Union	76.7%	81.7%	71.4%	80.7%	76.4%
64	Volusia	81.9%	82.6%	81.9%	82.0%	81.9%
65	Wakulla	77.6%	82.5%	81.6%	84.0%	84.9%
66	Walton	76.1%	74.2%	81.5%	82.3%	85.1%
67	Washington	69.8%	71.5%	83.1%	85.0%	84.4%
68	Deaf/Blind	88.4%	89.5%	95.1%	91.8%	88.8%
69	Dozier/Okee	58.2%	55.6%	59.5%	72.7%	60.0%
72	FAU	100.0%	100.0%	100.0%	100.0%	100.0%
73	FSU	95.0%	97.9%	98.6%	98.5%	97.9%
74	FAMU	89.5%	78.1%	70.0%	93.5%	94.6%
75	UF	98.0%	93.8%	95.9%	95.6%	96.5%
	<b>FLORIDA</b>	<b>71.0%</b>	<b>72.4%</b>	<b>75.4%</b>	<b>78.6%</b>	<b>80.7%</b>

\*Source: 2009-10 Florida Department of Education (FL DOE) cohort graduation data as of 10/27/10.

A pound sign (#) replaces data when the cohort is fewer than ten students. A blank cell indicates no students in the cohort.

**Table 10: NGA Graduation Rates by Race, 2009-10\***

District	White, Non-Hispanic	Black, Non-Hispanic	Hispanic	Asian/Pacific Islander	American Indian/Alaskan Native	Multiracial	Total
01 Alachua	84.2%	64.0%	81.0%	84.6%	#	79.2%	76.4%
02 Baker	78.3%	57.1%	#	#	#	#	75.9%
03 Bay	83.6%	71.2%	68.3%	80.0%	#	87.0%	81.1%
04 Bradford	64.7%	64.2%	#	#	#	#	63.6%
05 Brevard	96.0%	92.8%	93.0%	93.9%	88.2%	94.4%	95.3%
06 Broward	85.2%	68.8%	80.7%	91.2%	63.3%	83.7%	77.7%
07 Calhoun	88.9%	81.8%	#	#	#	#	88.2%
08 Charlotte	80.5%	71.3%	72.4%	81.8%	#	84.6%	79.3%
09 Citrus	83.8%	58.9%	93.8%	88.2%	#	85.0%	82.9%
10 Clay	82.9%	65.7%	64.5%	82.6%	#	75.9%	78.4%
11 Collier	88.1%	74.9%	69.2%	94.3%	#	75.0%	79.4%
12 Columbia	89.4%	76.6%	95.5%	100.0%	#	92.9%	87.0%
13 Dade	82.2%	63.7%	73.9%	86.2%	78.9%	81.4%	72.1%
14 DeSoto	60.7%	50.0%	67.5%	#	#	#	61.0%
15 Dixie	66.9%	61.1%	#	#	#	#	66.4%
16 Duval	72.9%	59.7%	63.7%	78.5%	70.6%	75.5%	66.6%
17 Escambia	86.9%	66.5%	67.1%	88.1%	82.6%	79.1%	77.9%
18 Flagler	85.0%	79.4%	81.0%	92.0%	#	76.9%	83.5%
19 Franklin	75.4%	83.3%	#	#	#	#	78.7%
20 Gadsden	63.6%	58.8%	52.5%	#	#	#	58.1%
21 Gilchrist	94.5%	#	#	#	#	#	92.1%
22 Glades	71.9%	70.0%	50.0%	#	#	#	63.6%
23 Gulf	95.9%	96.3%	#	#	#	#	95.5%
24 Hamilton	69.6%	60.6%	45.5%	#	#	#	63.0%
25 Hardee	83.0%	60.0%	71.5%	#	#	#	75.1%
26 Hendry	85.8%	84.0%	78.9%	#	#	61.5%	81.4%
27 Hernando	79.5%	75.5%	76.1%	83.3%	#	88.5%	79.0%
28 Highlands	76.6%	73.6%	64.2%	#	#	70.6%	73.4%
29 Hillsborough	87.9%	75.1%	76.5%	94.4%	85.0%	86.3%	82.3%
30 Holmes	80.5%	#	#	#	#	#	80.6%
31 Indian River	84.5%	73.2%	78.9%	95.5%	#	89.7%	82.1%
32 Jackson	82.7%	78.0%	80.0%	#	#	#	81.5%
33 Jefferson	27.8%	61.0%	#	#	#	#	50.8%
34 Lafayette	91.4%	#	#	#	#	#	88.3%
35 Lake	84.6%	68.8%	75.3%	92.7%	90.9%	86.4%	80.8%
36 Lee	86.4%	67.1%	74.4%	88.7%	78.6%	80.5%	80.3%
37 Leon	88.7%	62.3%	82.6%	96.4%	#	80.0%	77.6%
38 Levy	71.7%	71.2%	59.4%	#	#	#	70.7%
39 Liberty	83.6%	52.6%	#	#	#	#	75.3%
40 Madison	64.9%	64.9%	#	#	#	#	65.0%
41 Manatee	82.5%	67.9%	62.4%	86.4%	#	74.3%	76.4%
42 Marion	80.5%	70.4%	74.6%	91.5%	#	75.7%	77.8%
43 Martin	92.8%	82.3%	76.7%	95.8%	#	82.6%	89.8%
44 Monroe	90.9%	71.4%	78.7%	90.0%	#	66.7%	85.4%
45 Nassau	90.4%	79.0%	91.7%	90.0%	#	100.0%	89.5%
46 Okaloosa	90.2%	81.7%	83.7%	93.3%	#	90.4%	89.0%
47 Okeechobee	68.7%	52.2%	61.4%	#	64.3%	#	64.9%
48 Orange	87.1%	69.8%	75.0%	92.1%	77.2%	81.2%	79.0%
49 Osceola	88.9%	79.1%	79.7%	91.4%	81.3%	86.8%	83.3%
50 Palm Beach	90.6%	70.4%	79.6%	94.6%	78.2%	86.1%	81.9%
51 Pasco	82.6%	82.9%	75.7%	88.3%	75.0%	84.4%	81.9%
52 Pinellas	83.0%	62.6%	64.8%	87.1%	81.5%	77.3%	77.7%
53 Polk	78.4%	65.3%	66.2%	92.7%	#	78.1%	73.2%
54 Putnam	73.9%	79.5%	67.8%	#	#	76.9%	74.6%
55 St. Johns	93.7%	78.9%	87.0%	96.4%	#	89.3%	92.1%
56 St. Lucie	85.5%	69.5%	80.8%	92.0%	90.9%	84.3%	79.1%
57 Santa Rosa	88.9%	83.3%	83.6%	75.0%	100.0%	93.3%	88.3%
58 Sarasota	87.7%	70.9%	72.1%	93.8%	#	80.7%	84.3%
59 Seminole	96.1%	88.5%	89.1%	96.6%	92.9%	95.3%	93.8%
60 Sumter	90.3%	80.7%	72.7%	#	#	#	86.9%
61 Suwannee	65.6%	58.0%	36.4%	#	#	#	62.7%
62 Taylor	75.7%	68.3%	#	#	#	#	73.7%
63 Union	77.8%	73.1%	#	#	#	#	76.4%
64 Volusia	84.5%	72.7%	72.0%	89.0%	#	84.0%	81.2%
65 Wakulla	82.5%	81.3%	#	#	#	#	82.7%
66 Walton	86.0%	69.4%	55.0%	#	#	#	83.2%
67 Washington	85.7%	77.1%	#	#	#	#	84.4%
68 Deaf/Blind	87.8%	94.4%	85.0%	#	#	#	88.8%
69 Dozier/Okee	5.3%	3.6%	#	#	#	#	4.0%
72 FAU	#	#	#	#	#	#	100.0%
73 FSU	97.3%	100.0%	100.0%	#	#	100.0%	97.9%
74 FAMU	#	94.6%	#	#	#	#	94.6%
75 UF	95.7%	96.7%	100.0%	#	#	#	96.5%
<b>FLORIDA</b>	<b>85.4%</b>	<b>68.4%</b>	<b>75.3%</b>	<b>89.8%</b>	<b>76.8%</b>	<b>83.7%</b>	<b>79.0%</b>

\*Source: 2009-10 Florida Department of Education (FL DOE) cohort graduation data as of 10/27/10.  
A pound sign (#) replaces data when the cohort is fewer than ten students. A blank cell indicates no students in the cohort.

**Table 11: NCLB Graduation Rates by Race, 2009-10\***

District	White, Non-Hispanic	Black, Non-Hispanic	Hispanic	Asian/Pacific Islander	American Indian/Alaskan Native	Multiracial	Total
01 Alachua	82.5%	58.3%	79.6%	84.6%	#	73.6%	73.2%
02 Baker	77.6%	50.0%	#	#	#	#	74.1%
03 Bay	81.7%	68.3%	66.7%	80.0%	77.8%	87.0%	79.1%
04 Bradford	69.4%	64.2%	#	#	#	#	66.9%
05 Brevard	94.5%	86.9%	91.2%	93.0%	88.2%	93.4%	93.2%
06 Broward	84.3%	67.4%	79.7%	90.6%	56.7%	83.4%	76.6%
07 Calhoun	87.0%	81.8%	#	#	#	#	86.8%
08 Charlotte	81.9%	69.9%	71.3%	81.8%	#	84.6%	80.3%
09 Citrus	85.0%	60.3%	89.6%	88.2%	#	82.5%	83.7%
10 Clay	88.0%	72.0%	79.7%	82.6%	#	79.3%	84.4%
11 Collier	86.2%	72.0%	66.1%	94.3%	#	72.5%	76.9%
12 Columbia	82.5%	64.1%	86.4%	100.0%	#	78.6%	78.8%
13 Dade	83.3%	62.8%	74.0%	86.5%	78.9%	81.8%	72.0%
14 DeSoto	68.0%	50.0%	65.1%	#	#	#	64.5%
15 Dixie	66.1%	61.1%	#	#	#	#	65.8%
16 Duval	77.1%	62.4%	67.1%	79.8%	82.4%	79.5%	69.9%
17 Escambia	83.3%	58.1%	65.8%	86.9%	78.3%	76.7%	72.4%
18 Flagler	83.0%	73.9%	78.5%	92.0%	#	76.9%	80.9%
19 Franklin	68.4%	83.3%	#	#	#	#	72.0%
20 Gadsden	54.5%	61.2%	57.5%	#	#	#	60.2%
21 Gilchrist	93.3%	#	#	#	#	#	92.7%
22 Glades	68.8%	65.0%	58.3%	#	#	#	63.6%
23 Gulf	95.9%	96.3%	#	#	#	#	95.5%
24 Hamilton	69.6%	54.9%	45.5%	#	#	#	60.1%
25 Hardee	79.3%	60.0%	69.1%	#	#	#	72.3%
26 Hendry	81.7%	84.0%	77.0%	#	#	#	79.2%
27 Hernando	83.1%	77.7%	80.2%	83.3%	#	92.3%	82.6%
28 Highlands	80.5%	68.6%	65.2%	#	#	76.5%	75.0%
29 Hillsborough	88.1%	72.1%	76.1%	93.8%	85.0%	86.7%	81.7%
30 Holmes	80.5%	#	#	#	#	#	80.2%
31 Indian River	88.3%	74.5%	83.4%	95.5%	#	96.6%	85.6%
32 Jackson	88.0%	77.4%	80.0%	#	#	#	84.7%
33 Jefferson	27.8%	58.5%	#	#	#	#	49.2%
34 Lafayette	86.2%	#	#	#	#	#	84.4%
35 Lake	83.1%	64.6%	74.4%	92.7%	90.9%	84.1%	79.0%
36 Lee	84.5%	62.2%	72.8%	88.7%	78.6%	79.9%	78.0%
37 Leon	88.8%	59.9%	82.6%	96.4%	#	80.0%	76.6%
38 Levy	71.7%	65.2%	59.4%	#	#	#	69.7%
39 Liberty	88.5%	89.5%	#	#	#	#	87.6%
40 Madison	83.0%	64.2%	#	#	#	#	72.2%
41 Manatee	81.4%	62.9%	59.4%	84.7%	#	75.7%	74.4%
42 Marion	79.6%	66.8%	73.4%	91.5%	#	78.6%	76.4%
43 Martin	92.4%	78.8%	73.8%	95.8%	#	82.6%	88.8%
44 Monroe	88.7%	69.6%	74.3%	90.0%	#	60.0%	82.6%
45 Nassau	89.7%	81.5%	91.7%	100.0%	#	100.0%	89.2%
46 Okaloosa	90.3%	85.7%	86.7%	95.0%	#	93.3%	89.9%
47 Okeechobee	72.7%	60.9%	63.0%	#	64.3%	#	68.7%
48 Orange	86.4%	68.2%	73.5%	91.8%	80.7%	80.6%	77.9%
49 Osceola	84.8%	76.8%	75.3%	91.4%	81.3%	84.4%	79.5%
50 Palm Beach	89.7%	67.8%	77.5%	93.8%	80.0%	84.7%	80.2%
51 Pasco	85.0%	84.4%	77.5%	90.4%	85.0%	85.9%	84.2%
52 Pinellas	82.6%	60.3%	65.2%	87.1%	77.8%	77.3%	77.0%
53 Polk	77.2%	61.3%	64.1%	90.9%	#	75.2%	71.2%
54 Putnam	74.5%	64.8%	63.2%	#	#	76.9%	71.2%
55 St. Johns	92.4%	71.7%	89.1%	96.4%	#	89.3%	90.5%
56 St. Lucie	84.6%	67.5%	78.8%	88.0%	90.9%	84.3%	77.6%
57 Santa Rosa	87.2%	77.2%	83.6%	72.5%	100.0%	86.7%	86.2%
58 Sarasota	87.5%	70.5%	72.1%	93.8%	#	81.8%	84.1%
59 Seminole	95.2%	85.7%	87.6%	96.0%	85.7%	94.4%	92.6%
60 Sumter	88.6%	72.3%	70.5%	#	#	#	84.0%
61 Suwannee	76.5%	62.3%	45.5%	#	#	#	72.6%
62 Taylor	74.3%	56.1%	#	#	#	#	70.0%
63 Union	77.8%	69.2%	#	#	#	#	75.8%
64 Volusia	82.7%	66.5%	69.9%	87.9%	#	82.1%	78.7%
65 Wakulla	81.4%	78.1%	#	#	#	#	81.7%
66 Walton	84.7%	63.9%	60.0%	#	#	#	82.2%
67 Washington	83.7%	77.1%	#	#	#	#	82.9%
68 Deaf/Blind	53.7%	61.1%	55.0%	#	#	#	55.0%
69 Dozier/Okee	78.9%	42.9%	#	#	#	#	60.0%
72 FAU	#	#	#	#	#	#	100.0%
73 FSU	97.3%	100.0%	100.0%	#	#	100.0%	97.9%
74 FAMU	#	94.6%	#	#	#	#	94.6%
75 UF	95.7%	96.7%	100.0%	#	#	#	96.5%
<b>FLORIDA</b>	<b>85.2%</b>	<b>66.6%</b>	<b>74.6%</b>	<b>89.6%</b>	<b>77.9%</b>	<b>83.5%</b>	<b>78.2%</b>

\*Source: 2009-10 Florida Department of Education (FL DOE) cohort graduation data as of 10/27/10.  
A pound sign (#) replaces data when the cohort is fewer than ten students. A blank cell indicates no students in the cohort.

**Table 12: Florida Graduation Rates by Race, 2009-10\***

District	White, Non-Hispanic	Black, Non-Hispanic	Hispanic	Asian/Pacific Islander	American Indian/Alaskan Native	Multiracial	Total
01 Alachua	84.4%	64.2%	81.1%	84.6%	#	79.2%	76.6%
02 Baker	79.7%	59.5%	#	#	#	#	77.3%
03 Bay	84.4%	71.9%	69.8%	80.0%	#	87.0%	81.9%
04 Bradford	74.0%	67.9%	#	#	#	#	71.1%
05 Brevard	96.6%	93.2%	93.4%	94.0%	88.2%	95.1%	95.8%
06 Broward	85.4%	69.0%	80.9%	91.5%	63.3%	84.1%	77.9%
07 Calhoun	89.7%	81.8%	#	#	#	#	89.0%
08 Charlotte	84.0%	73.4%	73.6%	81.8%	#	84.6%	82.4%
09 Citrus	86.7%	61.6%	94.0%	88.2%	#	85.0%	85.6%
10 Clay	89.4%	74.5%	80.9%	83.7%	#	79.3%	85.9%
11 Collier	89.1%	75.1%	70.4%	94.6%	#	75.0%	80.4%
12 Columbia	91.1%	77.0%	100.0%	100.0%	#	92.9%	88.5%
13 Dade	83.6%	63.9%	74.3%	86.5%	78.9%	81.8%	72.6%
14 DeSoto	71.0%	60.0%	69.0%	#	#	#	69.0%
15 Dixie	66.9%	61.1%	#	#	#	#	66.4%
16 Duval	79.8%	66.2%	69.1%	81.6%	82.4%	81.2%	73.1%
17 Escambia	87.9%	66.9%	68.4%	88.2%	83.3%	80.4%	78.8%
18 Flagler	85.0%	79.4%	81.0%	92.0%	#	76.9%	83.5%
19 Franklin	79.3%	83.3%	#	#	#	#	81.6%
20 Gadsden	63.6%	64.0%	60.0%	#	#	#	63.4%
21 Gilchrist	95.7%	#	#	#	#	#	94.9%
22 Glades	71.9%	70.0%	58.3%	#	#	#	66.2%
23 Gulf	96.8%	96.3%	#	#	#	#	96.2%
24 Hamilton	73.2%	62.5%	45.5%	#	#	#	65.5%
25 Hardee	84.0%	60.0%	72.2%	#	#	#	76.0%
26 Hendry	86.4%	84.1%	79.3%	#	#	64.3%	81.9%
27 Hernando	85.3%	81.4%	82.9%	83.3%	#	92.6%	84.9%
28 Highlands	82.6%	75.5%	68.1%	#	#	76.5%	78.1%
29 Hillsborough	89.9%	76.9%	78.9%	95.0%	88.1%	88.9%	84.4%
30 Holmes	81.9%	#	#	#	#	#	81.9%
31 Indian River	89.3%	78.4%	84.9%	95.7%	#	96.6%	87.2%
32 Jackson	90.7%	81.9%	80.0%	#	#	#	87.9%
33 Jefferson	31.6%	61.0%	#	#	#	#	51.6%
34 Lafayette	91.4%	#	#	#	#	#	88.3%
35 Lake	85.9%	71.0%	76.6%	92.7%	91.7%	86.4%	82.3%
36 Lee	86.8%	67.2%	74.6%	88.7%	78.6%	80.7%	80.6%
37 Leon	90.4%	66.2%	83.3%	96.4%	100.0%	81.0%	80.2%
38 Levy	72.6%	71.2%	59.4%	#	#	#	71.4%
39 Liberty	92.1%	94.7%	#	#	#	#	91.2%
40 Madison	86.5%	74.6%	#	#	#	#	79.7%
41 Manatee	85.6%	69.9%	64.8%	86.4%	#	78.4%	79.2%
42 Marion	82.4%	71.8%	76.2%	91.5%	#	78.9%	79.5%
43 Martin	93.4%	82.6%	77.5%	95.8%	#	84.0%	90.4%
44 Monroe	91.9%	73.7%	78.8%	90.0%	#	66.7%	86.3%
45 Nassau	92.6%	82.7%	91.7%	100.0%	#	100.0%	91.8%
46 Okaloosa	92.2%	90.5%	86.7%	95.0%	#	93.3%	91.9%
47 Okeechobee	75.1%	67.4%	66.4%	#	64.3%	#	71.7%
48 Orange	87.9%	70.5%	75.6%	92.3%	82.5%	81.7%	79.6%
49 Osceola	89.1%	79.3%	80.0%	91.4%	81.3%	86.9%	83.5%
50 Palm Beach	91.5%	71.4%	80.5%	94.6%	80.4%	86.9%	82.9%
51 Pasco	88.2%	88.3%	80.2%	90.5%	85.0%	89.4%	87.2%
52 Pinellas	84.1%	64.1%	66.2%	87.9%	81.5%	78.7%	78.8%
53 Polk	81.3%	67.7%	68.2%	93.7%	#	80.2%	75.9%
54 Putnam	82.2%	83.7%	77.3%	#	#	78.6%	82.0%
55 St. Johns	94.0%	80.6%	89.1%	96.4%	#	89.3%	92.6%
56 St. Lucie	85.5%	69.5%	80.8%	92.0%	90.9%	84.3%	79.1%
57 Santa Rosa	89.5%	83.3%	83.6%	75.0%	100.0%	93.3%	88.8%
58 Sarasota	89.2%	74.3%	74.4%	93.8%	#	81.8%	86.1%
59 Seminole	96.3%	89.0%	89.6%	96.6%	92.9%	95.8%	94.2%
60 Sumter	91.0%	82.1%	72.7%	#	#	#	87.7%
61 Suwannee	78.2%	65.2%	45.5%	#	#	#	74.5%
62 Taylor	76.7%	68.3%	#	#	#	#	74.7%
63 Union	77.8%	73.1%	#	#	#	#	76.4%
64 Volusia	85.2%	73.4%	73.0%	89.1%	#	84.3%	81.9%
65 Wakulla	84.6%	81.8%	#	#	#	#	84.9%
66 Walton	87.2%	75.0%	60.0%	#	#	#	85.1%
67 Washington	85.7%	77.1%	#	#	#	#	84.4%
68 Deaf/Blind	87.8%	94.4%	85.0%	#	#	#	88.8%
69 Dozier/Okee	78.9%	42.9%	#	#	#	#	60.0%
72 FAU	#	#	#	#	#	#	100.0%
73 FSU	97.3%	100.0%	100.0%	#	#	100.0%	97.9%
74 FAMU	#	94.6%	#	#	#	#	94.6%
75 UF	95.7%	96.7%	100.0%	#	#	#	96.5%
<b>FLORIDA</b>	<b>87.4%</b>	<b>70.1%</b>	<b>76.4%</b>	<b>90.4%</b>	<b>79.9%</b>	<b>85.3%</b>	<b>80.7%</b>

\*Source: 2009-10 Florida Department of Education (FL DOE) cohort graduation data as of 10/27/10.  
A pound sign (#) replaces data when the cohort is fewer than ten students. A blank cell indicates no students in the cohort.

**Table 13: Dropout Rates by Race, 2009-10\***

District	White, Non-Hispanic	Black, Non-Hispanic	Hispanic	Asian/Pacific Islander	American Indian/Alaskan Native	Multiracial	Total
01 Alachua	1.4%	3.4%	1.9%	0.6%	0.0%	3.2%	2.2%
02 Baker	3.9%	3.5%	0.0%	#	#	3.2%	3.8%
03 Bay	1.2%	2.3%	1.5%	1.2%	2.0%	1.8%	1.4%
04 Bradford	4.9%	5.3%	11.5%	#	#	#	5.1%
05 Brevard	0.5%	0.6%	0.5%	0.2%	0.0%	0.6%	0.5%
06 Broward	1.0%	2.5%	0.9%	0.5%	1.5%	0.9%	1.6%
07 Calhoun	2.5%	1.0%	0.0%	#	#	0.0%	2.2%
08 Charlotte	2.9%	3.4%	4.7%	2.4%	6.9%	3.7%	3.1%
09 Citrus	1.2%	1.0%	1.2%	0.0%	0.0%	0.6%	1.2%
10 Clay	1.3%	1.7%	1.1%	0.6%	3.1%	1.8%	1.3%
11 Collier	1.4%	1.4%	3.0%	0.0%	2.6%	0.4%	2.0%
12 Columbia	0.6%	1.0%	0.0%	0.0%	#	1.2%	0.6%
13 Dade	2.9%	4.9%	3.8%	2.0%	1.7%	1.9%	4.0%
14 DeSoto	4.1%	3.8%	8.6%	#	#	4.0%	5.2%
15 Dixie	4.6%	1.7%	#	#	#	#	4.2%
16 Duval	1.9%	2.6%	1.6%	0.9%	1.3%	0.9%	2.2%
17 Escambia	0.9%	2.7%	1.3%	0.2%	3.0%	1.2%	1.6%
18 Flagler	1.7%	2.9%	0.7%	0.0%	6.3%	2.0%	1.8%
19 Franklin	0.4%	0.0%	0.0%	#	#	#	0.3%
20 Gadsden	1.6%	1.5%	2.2%	#	#	0.0%	1.6%
21 Gilchrist	0.3%	0.0%	0.0%	#	#	#	0.2%
22 Glades	0.9%	1.3%	2.2%	#	#	#	1.4%
23 Gulf	0.4%	0.0%	0.0%	#	#	0.0%	0.3%
24 Hamilton	0.8%	7.3%	8.0%	#	#	#	4.4%
25 Hardee	2.6%	4.0%	3.6%	#	#	#	3.3%
26 Hendry	3.3%	3.1%	3.7%	8.3%	0.0%	8.3%	3.5%
27 Hernando	2.6%	3.2%	2.1%	0.9%	5.7%	2.6%	2.6%
28 Highlands	2.9%	4.1%	3.4%	0.0%	3.3%	3.1%	3.2%
29 Hillsborough	0.5%	1.2%	0.9%	0.1%	0.0%	0.6%	0.7%
30 Holmes	2.1%	4.7%	0.0%	0.0%	#	#	2.2%
31 Indian River	2.0%	1.1%	1.5%	0.0%	0.0%	1.9%	1.7%
32 Jackson	1.5%	2.3%	0.0%	7.7%	0.0%	4.7%	1.8%
33 Jefferson	11.3%	7.1%	#	#	#	#	7.8%
34 Lafayette	0.4%	0.0%	0.0%	#	#	0.0%	0.3%
35 Lake	2.6%	4.6%	3.2%	1.0%	1.9%	0.9%	3.0%
36 Lee	1.2%	1.6%	1.4%	0.8%	0.0%	1.3%	1.3%
37 Leon	0.4%	1.3%	0.7%	0.4%	0.0%	0.5%	0.8%
38 Levy	5.6%	5.5%	6.9%	#	#	0.0%	5.5%
39 Liberty	1.9%	0.7%	6.7%	#	#	#	1.8%
40 Madison	2.8%	3.5%	0.0%	#	#	#	3.1%
41 Manatee	3.0%	5.9%	7.0%	1.8%	5.3%	3.2%	4.3%
42 Marion	0.5%	0.8%	0.3%	0.0%	1.8%	0.8%	0.5%
43 Martin	0.3%	0.9%	2.0%	0.0%	0.0%	0.0%	0.6%
44 Monroe	0.7%	2.5%	1.5%	0.0%	#	0.0%	1.1%
45 Nassau	1.3%	1.0%	3.5%	0.0%	0.0%	0.0%	1.3%
46 Okaloosa	0.4%	0.4%	0.0%	0.0%	0.0%	0.2%	0.4%
47 Okeechobee	4.5%	4.6%	4.9%	0.0%	9.0%	0.0%	4.6%
48 Orange	0.5%	1.1%	0.7%	0.1%	0.0%	0.5%	0.7%
49 Osceola	1.0%	1.7%	1.8%	0.0%	1.3%	1.0%	1.4%
50 Palm Beach	1.6%	4.5%	2.9%	2.1%	3.4%	2.9%	2.8%
51 Pasco	1.1%	0.6%	1.2%	0.7%	0.0%	1.2%	1.1%
52 Pinellas	1.8%	4.0%	3.2%	1.1%	8.5%	2.5%	2.4%
53 Polk	4.0%	4.6%	4.1%	1.2%	5.5%	4.1%	4.1%
54 Putnam	3.8%	3.4%	5.3%	7.1%	#	2.4%	3.9%
55 St. Johns	0.7%	1.8%	0.7%	1.2%	0.0%	2.6%	0.9%
56 St. Lucie	1.5%	3.5%	2.2%	0.8%	0.0%	1.9%	2.3%
57 Santa Rosa	1.0%	1.0%	0.4%	0.6%	0.0%	1.0%	0.9%
58 Sarasota	1.7%	3.1%	3.6%	0.4%	2.6%	2.0%	2.0%
59 Seminole	0.4%	0.6%	0.3%	0.1%	0.0%	0.5%	0.4%
60 Sumter	2.0%	3.1%	0.8%	0.0%	#	2.6%	2.0%
61 Suwannee	2.4%	2.3%	5.8%	4.3%	#	5.6%	2.7%
62 Taylor	3.1%	5.0%	4.8%	#	0.0%	#	3.5%
63 Union	1.5%	2.4%	0.0%	#	#	0.0%	1.5%
64 Volusia	0.9%	1.4%	1.7%	0.7%	7.4%	1.2%	1.1%
65 Wakulla	3.7%	1.4%	0.0%	#	#	4.3%	3.4%
66 Walton	1.1%	2.4%	1.6%	9.1%	0.0%	0.0%	1.3%
67 Washington	1.6%	2.0%	0.0%	#	#	0.0%	1.6%
68 Deaf/Blind	0.0%	0.0%	0.0%	#	#	0.0%	0.0%
69 Dozier/Okee	0.0%	0.0%	0.0%	#	#	0.0%	0.0%
72 FAU	0.0%	0.0%	0.0%	0.0%	#	#	0.0%
73 FSU	0.0%	0.0%	0.0%	0.0%	#	0.0%	0.0%
74 FAMU	0.0%	0.0%	#	#	#	#	0.0%
75 UF	0.0%	0.0%	0.0%	#	#	0.0%	0.0%
<b>FLORIDA</b>	<b>1.4%</b>	<b>2.9%</b>	<b>2.5%</b>	<b>0.8%</b>	<b>2.2%</b>	<b>1.4%</b>	<b>2.0%</b>

\*Source: 2009-10 Florida Department of Education (FL DOE) dropout data as of 11/02/10.

A pound sign (#) replaces data when the subgroup population is fewer than ten students. A blank cell indicates no students in the subgroup population.

**Table 14: Dropout Rates by District, 2005-06 through 2009-10**

	District	2005-06	2006-07	2007-08	2008-09	2009-10*
01	Alachua	6.1%	6.6%	3.6%	2.6%	2.2%
02	Baker	3.7%	2.8%	1.8%	2.0%	3.8%
03	Bay	2.0%	2.5%	1.7%	0.8%	1.4%
04	Bradford	5.4%	5.1%	5.0%	3.1%	5.1%
05	Brevard	0.8%	0.9%	0.7%	0.6%	0.5%
06	Broward	2.7%	3.2%	2.0%	2.1%	1.6%
07	Calhoun	3.0%	3.2%	1.5%	0.6%	2.2%
08	Charlotte	2.5%	1.6%	1.5%	2.8%	3.1%
09	Citrus	4.7%	4.1%	1.7%	1.4%	1.2%
10	Clay	1.9%	2.3%	2.0%	1.2%	1.3%
11	Collier	2.0%	2.7%	2.5%	2.2%	2.0%
12	Columbia	2.1%	2.3%	0.6%	0.7%	0.6%
13	Dade	6.7%	5.8%	4.5%	3.9%	4.0%
14	DeSoto	6.1%	4.2%	3.4%	4.6%	5.2%
15	Dixie	5.6%	4.4%	4.3%	5.1%	4.2%
16	Duval	6.6%	5.2%	3.3%	4.8%	2.2%
17	Escambia	3.1%	3.3%	4.0%	2.1%	1.6%
18	Flagler	1.9%	2.5%	1.0%	2.2%	1.8%
19	Franklin	13.3%	6.7%	2.0%	5.4%	0.3%
20	Gadsden	4.9%	5.4%	1.1%	4.2%	1.6%
21	Gilchrist	2.3%	1.4%	0.7%	0.2%	0.2%
22	Glades	6.9%	13.0%	5.0%	3.8%	1.4%
23	Gulf	2.9%	0.9%	1.3%	1.4%	0.3%
24	Hamilton	5.4%	5.1%	4.4%	3.6%	4.4%
25	Hardee	5.7%	5.1%	6.4%	4.9%	3.3%
26	Hendry	4.2%	3.0%	4.0%	3.1%	3.5%
27	Hernando	4.9%	3.3%	2.8%	2.7%	2.6%
28	Highlands	5.7%	5.4%	4.2%	4.2%	3.2%
29	Hillsborough	2.1%	1.6%	1.8%	1.0%	0.7%
30	Holmes	3.8%	3.4%	2.4%	1.7%	2.2%
31	Indian River	1.0%	1.8%	1.3%	1.5%	1.7%
32	Jackson	1.2%	1.6%	1.4%	2.0%	1.8%
33	Jefferson	7.7%	7.9%	5.3%	1.8%	7.8%
34	Lafayette	2.8%	2.3%	2.8%	0.7%	0.3%
35	Lake	4.7%	4.5%	3.1%	2.9%	3.0%
36	Lee	3.5%	2.4%	1.8%	1.3%	1.3%
37	Leon	2.3%	3.6%	2.1%	3.0%	0.8%
38	Levy	4.8%	4.2%	2.9%	4.2%	5.5%
39	Liberty	0.9%	0.4%	0.0%	1.3%	1.8%
40	Madison	5.5%	5.5%	5.1%	2.4%	3.1%
41	Manatee	3.1%	1.3%	4.4%	3.6%	4.3%
42	Marion	4.2%	3.3%	3.1%	2.6%	0.5%
43	Martin	0.4%	0.6%	0.5%	0.7%	0.6%
44	Monroe	1.5%	1.2%	0.6%	0.6%	1.1%
45	Nassau	3.4%	4.2%	3.5%	2.1%	1.3%
46	Okaloosa	2.2%	1.8%	1.7%	1.0%	0.4%
47	Okeechobee	6.0%	5.3%	5.2%	3.9%	4.6%
48	Orange	1.9%	1.7%	1.5%	1.1%	0.7%
49	Osceola	4.1%	4.2%	2.7%	1.0%	1.4%
50	Palm Beach	3.0%	4.4%	3.9%	2.6%	2.8%
51	Pasco	4.2%	3.5%	2.1%	1.2%	1.1%
52	Pinellas	3.0%	3.4%	2.1%	2.1%	2.4%
53	Polk	4.4%	4.2%	3.8%	4.0%	4.1%
54	Putnam	4.0%	2.9%	5.7%	3.3%	3.9%
55	St. Johns	2.0%	1.8%	1.3%	1.1%	0.9%
56	St. Lucie	2.2%	2.0%	1.3%	1.4%	2.3%
57	Santa Rosa	2.3%	1.9%	1.9%	1.8%	0.9%
58	Sarasota	2.5%	2.7%	2.1%	1.8%	2.0%
59	Seminole	1.2%	1.5%	0.5%	0.4%	0.4%
60	Sumter	2.6%	2.7%	1.8%	3.3%	2.0%
61	Suwannee	4.8%	5.2%	6.8%	3.4%	2.7%
62	Taylor	3.5%	4.7%	4.0%	2.8%	3.5%
63	Union	2.6%	1.8%	1.2%	1.0%	1.5%
64	Volusia	1.4%	1.3%	1.0%	1.3%	1.1%
65	Wakulla	5.7%	2.7%	2.7%	2.9%	3.4%
66	Walton	2.6%	2.3%	1.8%	2.6%	1.3%
67	Washington	3.4%	1.6%	1.7%	1.2%	1.6%
68	Deaf/Blind	0.3%	0.0%	0.0%	0.0%	0.0%
69	Dozier/Okee	4.0%	2.9%	1.3%	1.4%	0.0%
72	FAU	0.0%	0.0%	0.0%	0.0%	0.0%
73	FSU	0.2%	0.0%	0.0%	0.0%	0.0%
74	FAMU	0.0%	0.0%	0.0%	0.0%	0.0%
75	UF	0.2%	0.2%	0.0%	0.2%	0.0%
	<b>FLORIDA</b>	<b>3.5%</b>	<b>3.3%</b>	<b>2.6%</b>	<b>2.3%</b>	<b>2.0%</b>

\*Source: 2009-10 Florida Department of Education (FL DOE) cohort graduation data as of 11/02/10.

## Appendix A

### Frequently Asked Questions about Florida's Cohort Graduation Rates

#### What is a cohort?

For graduation purposes, a cohort is a group of students who enter the ninth grade at the same time on the same schedule to graduate four years later.

#### How is the cohort graduation rate calculated?

The graduation rate is the number of graduates (numerator) divided by the total number of students in the adjusted cohort (denominator).

The denominator (adjusted cohort) is attained by compiling and classifying four years of individual student records to determine which students entered ninth grade for the first time four years prior to the year of the rate calculation; which students transferred into the cohort in ninth grade in year one, tenth grade in year two, eleventh grade in year three, and twelfth grade in year four; and which students from the group transferred out or became deceased.

The numerator is the number of graduates from the adjusted cohort.

#### Are graduation rates disaggregated by student subgroups?

The NGA, NCLB, and Florida rates are disaggregated by race. The NCLB rate has also been disaggregated by additional subgroups, including gender, disabled, English Language Learners, economically disadvantaged (students eligible for free/reduced-price lunch), and migrant students. Beginning with the 2008-09 cohort, all three rates will be disaggregated by the additional subgroups.

#### What are the advantages to using a cohort graduation rate method?

The cohort method allows adjustment for students' mobility, thus providing a more accurate picture of the students' progress and outcomes.

#### How are students appropriately assigned to a cohort?

Students are assigned to a cohort based upon their initial entry into ninth grade. Incoming students are included in the cohort for which they were originally scheduled to graduate. For example, students transferred into the cohort in ninth grade in year one, tenth grade in year two, eleventh grade in year three, and twelfth grade in year four.

#### How are students appropriately removed from a cohort?

Currently students transferring to another public or private school, a home education program, or an adult education program, in addition to deceased students are removed from the cohort.

#### Where can I find a complete list of the withdrawal and diploma codes used in Florida?

Appendices A and B in the Database Manuals for the Automated Student Database System, online at <http://www.fldoe.org/eias/dataweb/default.asp>, provide all the withdrawal and diploma codes.

#### If a dropout re-enrolls in another high school, how is this student counted in the four-year graduation rate?

For graduation rate purposes, a prior dropout should be updated to a transfer if the student is later found enrolled in another school. Keep in mind, the goal of the cohort graduation rate is to determine the final educational outcome for all students during the four-year window.

#### How are students who are retained handled?

The student remains in the same cohort no matter how many times they are retained.

#### What happens if a student who was retained in ninth grade in year one of the cohort transfers to another school in year two of the cohort?

This student remains in the original cohort. He does not "start over" in another cohort. The graduation rate is based upon the students' initial entry into ninth grade; it is not based upon their initial entry into ninth grade at a particular school. An accurate graduation rate reflects the final outcome of all students four years after their initial entry into

ninth grade. Cohort-based graduation rates are accurate only if each student is assigned to a single cohort. The USED's Non-Regulatory Guidance paper for NCLB addresses this issue:

If a student who has repeated a grade transfers into a school, the student should be assigned to the cohort in which the student started 9th grade for the first time. This assignment prevents the student from being included in two separate cohorts of 9th graders—the cohort in which the student originally started 9th grade and the cohort in which the student was assigned in the school to which he or she transferred. Unless the student skipped a grade later in high school or caught up with the original cohort in some other manner, that student could not graduate within four years of starting 9th grade.<sup>1</sup>

#### **How are students who graduated early, such as those who graduate with the 18 hour diploma, counted?**

Students who graduate early are still counted in the cohort for which they were originally assigned. Remember, when calculating the cohort rate we are looking back four years prior. If a student enters ninth grade in 2005-06 and graduates in 2007-08, this student would not be counted as a graduate until 2008-09.

#### **What about students who take longer than four years to graduate?**

Students taking longer than four years to graduate would be considered non-graduates in the four-year cohort graduation rate.

#### **Are summer graduates included in the graduation rate?**

Yes, summer graduates are counted if they graduate by the end of the current school year.

#### **If a student gets a certificate of completion at the end of the year but takes a course in summer school to earn the required 2.0 GPA, does he count in the graduation rate if he attains the GPA before June 30?**

Yes, if the student is reported with an applicable diploma type on the Student End of Year Status records submitted to the DOE for that school year. If the student is not reported with a diploma on the end-of-year records for that year, the student will not be counted as a graduate.

#### **Does the student who earns a certificate of completion but has not passed the FCAT count as a graduate if he takes the ACT in June and gets the concordant score before June 30?**

The student will count if he is awarded a diploma by the district and it is reported with a diploma code on the end-of-year record for the applicable school year.

The DOE will identify graduates for the graduation rate based on the diploma type reported for students on the Student End of Year Status record format. Survey 5 data collected on end-of-year records covers students who were enrolled at any time during the 180-day school year, as well as during the school year's associated summer session, as reported by the districts. A student who is not reported with a diploma type on end-of-year records would not be counted as a graduate. A student's status is determined by the most recently reported withdrawal code, certificate type, or diploma type on the end-of-year records.

#### **Does a student who leaves a regular high school and transfers to an adult high school and earns an adult diploma count in the graduation rate?**

A student would not count as a graduate in the graduation rate for the regular high school if his/her most recently reported end-of-year data indicated that he/she transferred out of the regular high school as a withdrawal to attend adult education (database code W26). Students who are reported as having received a regular high school diploma through an adult program (database code W43 or W52) are counted as graduates.

#### **Why does Florida calculate more than one graduation rate?**

Florida currently calculates three graduation rates: Florida's NGA rate, detailed above, was mandated by the Florida Legislature in 2006 to meet an agreement with the National Governor's Association Compact and was first implemented using the data for 2004-05 and reported in the 2005-06 NCLB School Public Accountability Reports (SPARs); a rate for No Child Left Behind (NCLB) reporting purposes, implemented in 2001; and Florida's regular rate, which has been calculated consistently since 1998-99.

All three versions use the cohort method of tracking individual students in and out of the system from their entrance into the ninth grade through completion four years later. However, each rate defines a graduate differently. The differences between the NGA rate, the NCLB rate, and the regular graduation rate are as follows:

---

<sup>1</sup> NCLB High School Graduation Rate, Non-Regulatory Guidance, December 2008.

- The NGA graduation rate includes standard and special diplomas but excludes all GEDs.
- The NCLB graduation rate includes standard diplomas and GEDs awarded to high school students but excludes the special diplomas and the GEDs awarded to adult students.
- Florida's regular rate includes all diploma recipients. This includes standard and special diplomas and all GEDs.

### **Which graduation rate will be used in the school grades calculation?**

For years 2009-10 and 2010-11, the department will use the National Governors Association (NGA) graduation rate in the high school grading formula. If federal requirements for the uniform rate change in the interim, Florida's federal uniform rate will be adjusted accordingly. The Bureau of Evaluation and Reporting should be contacted at [evalnrpt@fldoe.org](mailto:evalnrpt@fldoe.org) for more specific information.

### **Is the NGA rate the same as the federal uniform graduation rate?**

No. The NGA graduation rate counts standard and special diplomas as graduates, whereas the federal graduation rate counts only standard diplomas. Both calculations count GEDs as non-graduates.

### **Why was the NGA rate selected for school grades purposes?**

The NGA rate more closely resembles the federal uniform graduation rate in that neither calculation counts GEDs as graduates.

### **What is the "federal uniform graduation rate"?**

As defined in 34 C.F.R. §200.19(b)(1)(i)-(iv), "the four-year adjusted cohort graduation rate (hereafter referred to as 'the four-year graduation rate') is the number of students who graduate in four years with a regular high school diploma divided by the number of students who form the adjusted cohort for the graduating class. From the beginning of 9th grade, students who are entering that grade for the first time form a cohort that is subsequently 'adjusted' by adding any students who transfer into the cohort later during the 9th grade and the next three years and subtracting any students who transfer out, emigrate to another country, or die during that same period."

Florida already has the tracking system in place to calculate the cohort graduation rate. However, Florida must adjust its list of applicable graduates and transfers in order to fully comply with the new rules as set forth in Section 200.19(b)(1)(ii)(B)(1).

Federal guidelines stipulate that only standard diplomas are counted as graduates and that only students who transfer to another school or educational program that *culminates with a standard diploma* can be removed from the cohort.

### **Which students are currently removed from the cohort?**

Transfers to other public schools, private schools, home education programs, or adult educational programs are currently considered as transfers and removed from the cohort.

### **Why can't the graduation rate and the dropout rate be added together to get 100%?**

The rates apply to different periods of measurement

- Graduation rate is a four-year, cohort-based indicator.
- Dropout rate is a single-year indicator.

The rates apply to different populations

- Graduation rate tracks the progress of a group of students who entered the same grade at the same time over a four-year period.
- Dropout rate tracks *all* ninth- through twelfth-grade students in a *single* year.

Not all non-graduates in the cohort are dropouts. Some students have been retained and are still in school, and some students received certificates of completion. These completers are considered non-graduates, not dropouts.

## Appendix B Graduation Rate Models for Florida's Next Generation High School Grading

### Overview

For years 2009-10 and 2010-11, the department will use the National Governors Association (NGA) graduation rate in the high school grading formula. NGA graduation rates are currently published in the NCLB School Public Accountability Reports (<http://doeweb-prd.doe.state.fl.us/eds/nclbspar/index.cfm>) under the heading "Graduation rate with GED based diploma recipients counted as non-graduates." The reporting of the NGA rate was implemented, in part, to address requirements of s. 1001.42(18)(e), F.S., which requires that annual public reports include graduation rates "calculated without GED tests." The NGA rate has also been used as a preliminary model for the USED's more rigorous uniform four-year adjusted cohort graduation rate, which will be required as part of AYP reporting beginning in 2011-12. The department plans to replace the NGA graduation rate with the federal uniform graduation rate for high school grading beginning with school year 2011-12. If federal requirements for the uniform rate change in the interim, Florida's federal uniform rate will be adjusted accordingly.

### Graduation Rate Model Comparisons

Both the NGA and federal uniform graduation rates are four-year adjusted cohort rate models. This means that the denominator consists of all students entering grade nine for the first time four years prior to the year for which the rate is calculated, plus incoming transfers (including incoming ninth graders in the first year of the cohort, tenth graders in the second year of the cohort, eleventh graders in the third year of the cohort and twelfth graders in the fourth [final] year of the cohort) **minus** adjustments to the cohort (exiting transfers and deceased students).

All high school students are included in the denominator unless they have been removed from the cohort as an exiting transfer or deceased student. All students from the denominator who are not specifically classified as on-time graduates become non-graduates – including dropouts and other students who remain enrolled at the end of year four but have not yet graduated with a qualifying diploma, as well as certificate recipients and recipients of non-qualifying diploma types.

		DENOMINATOR (Adjusted Cohort)	
	Cohort Adjustments (Students Removed from the Denominator)	Graduates (On-Time Graduates from the Denominator)	Non-Graduates (All Non-Grads Remaining in the Denominator)
<p><b>NGA Rate</b> (To be used for school years 2009-10 and 2010-11.)</p>	<p>Transfers to:</p> <ul style="list-style-type: none"> <li>• Other public high schools (including DJJs) or private high schools;</li> <li>• Home-education programs;</li> <li>• <u>Adult-education programs*</u>; and</li> <li>• Deceased students.</li> </ul> <p><small>*Adult-Ed GED diploma recipients are also classified as adult-education transfers for the NGA rate and are removed from the cohort.</small></p>	<ul style="list-style-type: none"> <li>• Standard diploma recipients.</li> <li>• Special diploma recipients.</li> </ul>	<ul style="list-style-type: none"> <li>• Dropouts,</li> <li>• Certificate recipients,</li> <li>• HS Exit Option GED* diploma recipients,</li> <li>• Continuing enrollees who are not on-time graduates.</li> </ul> <p><small>* Adult-Ed GED diploma recipients are classified as adult-education transfers and removed from the cohort (they are not non-grads here).</small></p>
<p><b>Federal Uniform Rate</b> (To be used for school years 2011-12 and beyond.)</p>	<p>Transfers to:</p> <ul style="list-style-type: none"> <li>• Other public or private high schools (<u>not including DJJs</u>);</li> <li>• Home-education programs; and</li> <li>• Deceased students.</li> </ul>	<ul style="list-style-type: none"> <li>• Standard diploma recipients.</li> </ul>	<ul style="list-style-type: none"> <li>• Dropouts,</li> <li>• Certificate recipients,</li> <li>• GED diploma recipients,</li> <li>• Special diploma recipients,</li> <li>• Continuing enrollees who are not on-time graduates,</li> <li>• <u>Transfers to adult education programs or DJJ centers who are not standard diploma recipients.</u></li> </ul>

See Appendix D for information on which DOE database diploma codes count as graduates.

**Appendix C**  
**Florida DOE Database Diploma Codes:**  
**Grad/Non-Grad Classification in Graduation Rate for High School Grading**

**NGA Graduation Rate (for 2009-10 and 2010-11):**

Diploma Graduates	Diploma Non-Graduates	Diploma - Other
<p>Standard Diplomas:</p> <p>W06 – standard diploma  W6A – accelerated college prep option (18 hrs.)  W6B – accelerated career prep option (18 hrs.)  WFA – accelerated college prep, alt assessment in lieu of FCAT (18 hrs.)  WFB – accelerated career prep, alt assessment in lieu of FCAT (18 hrs.)  WFT – standard diploma, alt assessment in lieu of FCAT  WFW – standard diploma for SWD with FCAT waiver  W43 – A standard high school diploma awarded through an adult education program (full credit hrs.; passing FCAT)  W52 – A standard high school diploma awarded through an adult education program (full credit hrs.; alt. assessment in lieu of FCAT)</p> <p>Special Diplomas:</p> <p>W07 – special diploma, option 1 for SWDs  W27 – special diploma, option 2 for SWDs</p>	<p>HS Exit Option GEDs:</p> <p>WGA – High school equivalency diploma awarded to exit option students who passed the GED and used an alt. assessment in lieu of FCAT  WGD – High school “State of Florida” diploma awarded to exit option students who passed the GED but not the FCAT  W10 – High school equivalency diploma awarded to exit option students who passed the GED and the FCAT</p>	<p>Adult Education GED:</p> <p>W45 – Adult education program GED diploma  (Treated the same as a transfer to an adult education program; removed from the cohort; removed from both the numerator and the denominator.)</p>

**Federal Uniform Rate\* (for 2011-12 and beyond):**

Diploma Graduates	Diploma Non-Graduates
<p>Standard Diplomas:</p> <p>W06 – standard diploma  W6A – accelerated college prep option (18 hrs.)  W6B – accelerated career prep option (18 hrs.)  WFA – accelerated college prep, alt assessment in lieu of FCAT (18 hrs.)  WFB – accelerated career prep, alt assessment in lieu of FCAT (18 hrs.)  WFT – standard diploma, alt assessment in lieu of FCAT  WFW – standard diploma for SWD with FCAT waiver  W43 – A standard high school diploma awarded through an adult education program (full credit hours; passing FCAT)  W52 – A standard high school diploma awarded through an adult education program (full credit hrs.; alt. assessment in lieu of FCAT)</p>	<p>All GED Diplomas:</p> <p>WGA – High school equivalency diploma awarded to exit option students who passed the GED and used an alt. assessment in lieu of FCAT  WGD – High school “State of Florida” diploma awarded to exit option students who passed the GED but not the FCAT  W10 – High school equivalency diploma awarded to exit option students who passed the GED and the FCAT  W45 – Adult education program GED diploma</p> <p>Special Diplomas:</p> <p>W07 – special diploma, option 1 for SWDs  W27 – special diploma, option 2 for SWDs</p>

\* If the U.S. Department of Education changes requirements for the federal uniform rate between now and 2011-12, Florida’s federal uniform rate model will be adjusted accordingly.

Sources

Florida Department of Education 2009-10 Database Manuals:

Appendix A – Attendance Recordkeeping Required Codes for Grade PK-12 Students

(URL: [http://www.fldoe.org/eias/dataweb/database\\_0910/appenda.pdf](http://www.fldoe.org/eias/dataweb/database_0910/appenda.pdf)).

Appendix B – Attendance Recordkeeping Required Codes for Adult Students

(URL: [http://www.fldoe.org/eias/dataweb/database\\_0910/appendb.pdf](http://www.fldoe.org/eias/dataweb/database_0910/appendb.pdf)).