

**THE SCHOOL BOARD OF BROWARD COUNTY, FLORIDA
OFFICE OF THE SUPERINTENDENT**

**MR. JAMES F. NOTTER
SUPERINTENDENT OF SCHOOLS**

Telephone: 754-321-2600

Facsimile: 754-321-2701

Approved memorandum with signatures is on file.

~~December 4, 2009~~

REVISED 12/09/09

TO: School Board Members

FROM: Joanne W. Harrison, Ed.D., Deputy Superintendent
Educational Programs & Student Support

VIA: James F. Notter
Superintendent of Schools

**SUBJECT: GRADUATION AND DROPOUT RATES FOR BROWARD COUNTY
PUBLIC SCHOOLS, 2004-05 TO 2008-09**

Today, the Florida Department of Education (FDOE) released graduation and dropout rates for Florida and the 67 individual Florida school districts. These data can be located online at the FDOE's Education Information & Accountability Services Web site (<http://www.fldoe.org/eias/eiaspubs/default.asp>).

As stated in the FDOE Data Report, "In September 2009, the Florida State Board of Education (SBE) approved the state's new high school grading formula, which incorporates graduation rates into the grading of high schools. The graduation rate the SBE chose to use in the new grading formula is the state's National Governors Association (NGA) Compact rate, which includes standard and special diplomas but excludes GEDs, both regular and adult. Florida is using this rate in place of its regular rate because the U.S. Department of Education (ED) is moving all states to adopt a uniform calculation method by 2010-11, that includes standard diplomas but excludes GEDs and special diplomas. Using the NGA rate now helps to transition Florida to the new federal rate when it becomes effective" (FDOE, 2009).

An examination of the data for Broward County Public Schools (BCPS) revealed an increase of 4.2 percentage points in the NGA graduation rate from 69.7 percent in 2007-08 to 73.9 percent in 2008-09. However, BCPS' dropout rate increased slightly from 2.0 percent in 2007-08 to 2.1 percent in 2008-09. Please note that graduation and drop-out rates are calculated independently. While graduation rates are determined by a four-year cohort of students, dropout rates are determined based on a single year's enrollment in grades 9-12.

Beginning with the 1998-99 school year, the Florida Department of Education (FDOE) has implemented a cohort-based method for calculating graduation rates (FDOE, 2008). The calculation accounts for every student entering and leaving Florida district schools. The rate measures the percentage of students who graduate within four years of their first enrollment in ninth grade. Students who transfer out of the school population are removed from the graduation cohort.

Likewise, students who transfer into the school population are added to the cohort and are included in the count of the class with which they were initially scheduled to graduate. A description of each of the different graduation rates released by FDOE is presented in Appendix A. **Figure 1 shows an increase for all three versions of the graduation rates for Broward.**

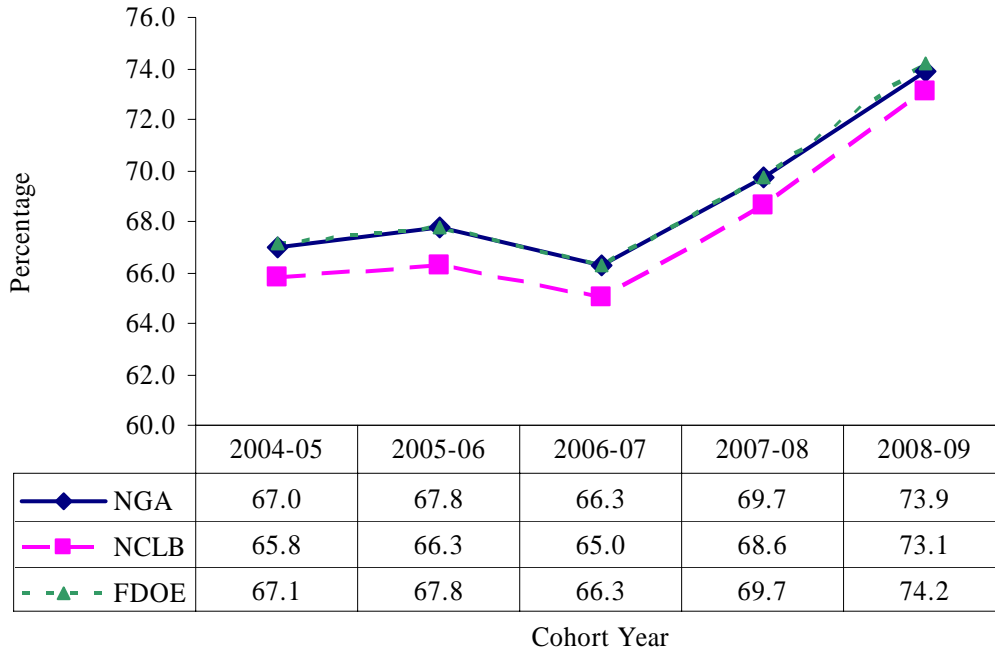


Figure 1. BCPS Three Graduation Rates, 2004-05 to 2008-09

NGA Graduation Rate

Because the high school grading formula will now use the NGA method to calculate graduation rates, this report will focus on the NGA graduation rate. An analysis of the graduation data revealed that the BCPS’ NGA graduation rate increased each of the last five years with the exception of 2006-07, as illustrated in Table 1. Broward ranks fourth among the five districts in the 2008-09 NGA graduation rate. As the table shows, the NGA graduation rate for BCPS rose by 4.2 percentage points in 2008-09, while Florida districts overall increased by 3.2 percentage points from 2007-08 to 2008-09. This increase in NGA graduation rate ranks Broward as the second highest increase of the five largest school districts in Florida.

Table 2

Comparison of BCPS NGA Graduation Rates with Other Large Florida School Districts, 2004-05 through 2008-09

	2004-05	2005-06	2006-07	2007-08	2008-09	Change 2007-08 to 2008-09
Broward	67.0	67.8	66.3	69.7	73.9	4.2
Hillsborough	76.7	74.5	76.3	77.0	82.2	5.2
Miami-Dade	59.2	58.7	63.4	65.4	68.5	3.1
Orange	72.7	70.6	69.7	73.6	75.9	2.3
Palm Beach	67.5	68.2	70.2	73.6	77.7	4.1
Florida	69.7	68.9	70.3	73.1	76.3	3.2

NGA Graduation Rates by Race

Table 3 shows a comparison of NGA graduation rates by race for Broward from 2004-05 through 2008-09. The table shows that, during the last four years, Broward has registered increases in graduation rates for each one of the race/ethnic subgroups. From 2004-05 to 2008-09, the NGA graduation rate increased over 10 percentage points for American Indian and Multiracial students, and increased between 5 and 10 percentage points for all other subgroups.

Table 3

BCPS NGA Graduation Rates by Race, 2004-05 through 2008-09

School Year	White, Non- Hispanic	Black, Non- Hispanic	Hispanic	Asian/ Pacific Islander	American Indian/ Alaskan Native	Multiracial	Total
2004-05	77.6	54.3	68.4	82.6	57.4	66.0	67.0
2005-06	77.6	56.7	68.5	84.7	75.0	66.1	67.8
2006-07	76.8	55.3	66.9	83.0	76.8	68.2	66.3
2007-08	78.8	59.2	71.4	86.3	76.8	76.2	69.7
2008-09	82.5	64.1	76.3	88.5	80.8	80.2	73.9

Table 4 shows a comparison of NGA graduation rates by race for Broward with the other four large school districts in Florida for 2008-09. As the table illustrates, among the five districts, Broward ranks fourth on graduation rates for White, third in graduation rates for Black, and second in graduation rates for Hispanic. The table also shows that in 2008-09, graduation rates for Broward's Hispanic, Asian, and American Indian/Alaskan Native students surpassed their state counterparts. Appendix B illustrates NGA graduation rates by race from 2004-05 to 2008-09.

Table 4

Comparison of BCPS NGA Graduation Rates with Other Large Florida School Districts by Race, 2008-09

	White, Non- Hispanic	Black, Non- Hispanic	Hispanic	Asian/Pacific Islander	American Indian/Alaskan Native	Multiracial
Broward	82.5	64.1	76.3	88.5	80.8	80.2
Hillsborough	87.5	73.4	77.8	93.4	82.1	86.6
Miami-Dade	77.6	59.9	70.3	83.3	75.0	80.3
Orange	82.8	65.1	74.6	89.7	88.9	82.4
Palm Beach	87.7	63.8	74.2	88.3	77.2	87.5
Florida	83.1	64.9	72.1	87.9	76.8	81.3

Dropout Rates

To determine the dropout rate in any given year (e.g., 2008-09) the unduplicated count of students assigned a dropout code at the end of the school year is divided by the total count of students attending school at anytime during that year. This figure includes students who were expected to enroll but did not.

A comparison of BCPS dropout data from 2004-05 to 2008-09 indicates a 0.1 percentage point increase, as shown in Table 5. BCPS continues to report lower incidence of dropouts than two (Miami-Dade and Palm Beach) of the other four largest districts and the state overall. However, each of the other four districts and the state overall evidenced declines in dropout rates from 2007-08 to 2008-09.

Table 5

Comparison of BCPS Dropout Rates with Other Large Florida School Districts, 2004-05 through 2008-09

	2004-05	2005-06	2006-07	2007-08	2008-09	Change 2007-08 to 2008-09
Broward	1.7	2.7	3.2	2.0	2.1	0.1
Hillsborough	2.1	2.1	1.6	1.8	1.0	-0.8
Miami-Dade	4.5	6.7	5.8	4.5	3.9	-0.6
Orange	2.0	1.9	1.7	1.5	1.1	-0.4
Palm Beach	2.8	3.0	4.4	3.9	2.6	-1.3
Florida	3.0	3.5	3.3	2.6	2.3	-0.3

Dropout Rates by Race

Table 6 shows a comparison of NGA dropout rates by race for Broward from 2004-05 through 2008-09. Since 2006-07, Broward has registered decreases in dropout rates for almost all the race/ethnic subgroups, except for American Indian.

Table 6

BCPS Dropout Rates by Race, 2004-05 through 2008-09

School Year	White, Non-Hispanic	Black, Non-Hispanic	Hispanic	Asian/Pacific Islander	American Indian/Alaskan Native	Multiracial	Total
2004-05	1.4	2.3	1.4	0.6	2.5	1.2	1.7
2005-06	1.7	3.9	2.2	1.3	0.6	2.2	2.7
2006-07	2.1	4.7	2.5	1.9	2.9	2.5	3.2
2007-08	1.2	2.9	1.6	0.7	3.1	1.4	2.0
2008-09	1.3	2.9	1.6	0.6	3.0	2.2	2.1

Table 7 shows a comparison of dropout rates by race for Broward with the other four large school districts in Florida for 2008-09. Appendix C illustrates dropout rates by race from 2004-05 to 2008-09.

Table 7

Comparison of BCPS Dropout Rates with Other Large Florida School Districts by Race, 2008-09

	White, Non-Hispanic	Black, Non-Hispanic	Hispanic	Asian/Pacific Islander	American Indian/Alaskan Native	Multiracial
Broward	1.3	2.9	1.6	0.6	3.0	2.2
Hillsborough	0.7	1.3	1.2	0.3	0.9	0.8
Miami-Dade	2.4	5.3	3.5	1.7	2.8	2.4
Orange	0.8	1.6	1.0	0.2	0.5	0.6
Palm Beach	1.4	4.2	2.5	0.9	3.1	2.2
Florida	1.6	3.4	2.5	0.8	2.3	1.6

Additionally, two summary appendices (Appendix D and E) were included to shed light on graduation and dropout performance for schools in Broward. Appendix D shows NGA, FDOE, and NCLB graduation rates along with dropout rates for Broward schools in 2008-09. Appendix E displays a comparison of NGA graduation rates and dropout rates from 2007-08 to 2008-09. **The results of Appendix E show that 60% (n=20) of schools increased their NGA graduation rate by at least one percentage point from 2007-08 to 2008-09. There was also a dramatic increase in NGA graduation rates for several schools, most notable are Dillard High, South Broward High, Atlantic Technical High, and Coconut Creek High.**

Attached, please find the report released today by the Florida Department of Education regarding 2008-09 graduation and dropout rates. **This memorandum may be accessed via the Research Services Web site (http://www.broward.k12.fl.us/research_evaluation/ResearchServices.htm).** If you have any comments concerning this memorandum, please contact **Dr. Katherine Blasik, Associate Superintendent, Research Development & Assessment at 754-321-2470** or **Mr. Richard Baum, Database Researcher III, Research Services at 754-321-2500.**

JFN/JWH/KAB/MRL:rgb

Attachments

cc: Executive Leadership Team
 Area Directors
 High School Principals

References

Florida Department of Education. (2008). *Technical Guide for the 2007-08 Florida High School Graduation Rate*. Tallahassee, FL: Florida Department of Education. Retrieved November 16, 2009, from <http://www.fldoe.org/eias/eiaspubs/word/gradgde.doc>

Florida Department of Education. (2009). *Florida Public High School Graduation Rates, 2008-09*. Tallahassee, FL: Florida Department of Education. Retrieved December 4, 2009, from <http://www.fldoe.org/eias/eiaspubs/word/gradrate0809.doc>

Appendix A

Description of Different Methods for Calculating Graduation Rates

Graduation Rate Methods	Graduates	Non-Graduates	Students Not Included in the Calculation
NGA Compact Rate (For use in 2009-10 and 2010-11)	<ul style="list-style-type: none"> • Standard Diploma recipients • Special Diploma recipients 	<ul style="list-style-type: none"> • Dropouts • Certificate of Completion recipients • Continuing enrollees who are not on-time graduates • GED recipients 	Students who transfer to: <ul style="list-style-type: none"> • Home education • Private schools • DJJ sites • Adult education • Other public schools Deceased Students
FDOE Rate	<ul style="list-style-type: none"> • Standard Diploma recipients • Special Diploma recipients • GED recipients 	<ul style="list-style-type: none"> • Dropouts • Certificate of Completion recipients • Continuing enrollees who are not on-time graduates 	Students who transfer to: <ul style="list-style-type: none"> • Home education • Private schools • DJJ sites • Adult education • Other public schools Deceased Students
NCLB Rate	<ul style="list-style-type: none"> • Standard Diploma recipients • GED recipients 	<ul style="list-style-type: none"> • Dropouts • Certificate of Completion recipients • Continuing enrollees who are not on-time graduates • Special Diploma recipients 	Students who transfer to: <ul style="list-style-type: none"> • Home education • Private schools • DJJ sites • Adult education • Other public schools Deceased Students

Appendix B

NGA Graduation Rates by Race, 2004-05 through 2008-09

	White, Non- Hispanic	Black, Non- Hispanic	Hispanic	Asian/ Pacific Islander	American Indian/ Alaskan Native	Multiracial	Total
2004-05							
Broward	77.6	54.3	68.4	82.6	57.4	66.0	67.0
Hillsborough	82.8	67.2	70.0	91.4	77.3	80.4	76.7
Miami-Dade	72.4	49.1	61.2	81.6	66.7	74.8	59.2
Orange	82.6	60.4	67.0	83.1	71.4	65.6	72.7
Palm Beach	80.3	51.8	59.3	79.7	66.7	70.0	67.5
Florida	78.3	55.6	62.8	81.5	69.5	74.0	69.7
2005-06							
Broward	77.6	56.7	68.5	84.7	75.0	66.1	67.8
Hillsborough	81.9	63.3	67.5	89.4	73.1	80.6	74.5
Miami-Dade	71.8	48.6	60.5	82.3	77.8	73.3	58.7
Orange	81.6	59.0	62.4	85.8	87.0	69.5	70.6
Palm Beach	80.6	52.9	59.7	82.5	67.2	72.7	68.2
Florida	77.4	55.3	62.0	82.3	73.1	73.0	68.9
2006-07							
Broward	76.8	55.3	66.9	83.0	76.8	68.2	66.3
Hillsborough	83.0	65.1	70.7	89.6	81.6	76.8	76.3
Miami-Dade	76.1	54.1	64.9	82.8	72.2	73.8	63.4
Orange	80.1	58.5	63.4	81.6	74.1	72.3	69.7
Palm Beach	82.4	53.9	62.4	84.2	60.4	78.7	70.2
Florida	78.6	56.9	64.3	82.2	71.8	72.3	70.3
2007-08							
Broward	78.8	59.2	71.4	86.3	76.8	76.2	69.7
Hillsborough	82.9	68.1	71.0	91.5	78.1	80.4	77.0
Miami-Dade	75.1	56.4	67.4	81.9		76.7	65.4
Orange	83.0	64.0	68.8	83.3	85.9	73.1	73.6
Palm Beach	85.3	58.1	66.7	89.1	79.2	78.8	73.6
Florida	80.8	60.8	67.6	83.8	76.1	77.3	73.1
2008-09							
Broward	82.5	64.1	76.3	88.5	80.8	80.2	73.9
Hillsborough	87.5	73.4	77.8	93.4	82.1	86.6	82.2
Miami-Dade	77.6	59.9	70.3	83.3	75.0	80.3	68.5
Orange	82.8	65.1	74.6	89.7	88.9	82.4	75.9
Palm Beach	87.7	63.8	74.2	88.3	77.2	87.5	77.7
Florida	83.1	64.9	72.1	87.9	76.8	81.3	76.3

Appendix C

Dropout Rates by Race, 2004-05 through 2008-09

	White, Non-Hispanic	Black, Non-Hispanic	Hispanic	Asian/Pacific Islander	American Indian/Alaskan Native	Multiracial	Total
2004-05							
Broward	1.4	2.3	1.4	0.6	2.5	1.2	1.7
Hillsborough	1.7	2.7	2.3	0.7	2.0	1.7	2.1
Miami-Dade	3.2	5.3	4.4	1.8	3.0	3.1	4.5
Orange	1.3	2.5	2.6	0.8	1.6	2.0	2.0
Palm Beach	1.7	3.9	4.2	1.2	4.2	1.5	2.8
Florida	2.4	3.9	3.6	1.5	2.9	2.0	3.0
2005-06							
Broward	1.7	3.9	2.2	1.3	0.6	2.2	2.7
Hillsborough	1.5	3.1	2.6	0.6	2.1	1.8	2.1
Miami-Dade	4.9	8.7	6.2	2.8	4.3	4.7	6.7
Orange	1.6	2.1	2.1	1.0	2.3	2.0	1.9
Palm Beach	1.8	4.4	4.0	0.8	2.9	2.1	3.0
Florida	2.6	4.7	4.3	1.5	3.1	2.6	3.5
2006-07							
Broward	2.1	4.7	2.5	1.9	2.9	2.5	3.2
Hillsborough	1.3	1.8	2.2	0.6	1.7	1.1	1.6
Miami-Dade	4.2	7.4	5.3	3.6	3.9	3.1	5.8
Orange	1.2	2.6	1.5	0.7	2.0	1.3	1.7
Palm Beach	2.9	6.8	5.0	1.7	3.7	2.4	4.4
Florida	2.4	4.7	3.9	1.7	2.6	2.3	3.3
2007-08							
Broward	1.2	2.9	1.6	0.7	3.1	1.4	2.0
Hillsborough	1.4	2.2	2.1	0.6	0.9	1.8	1.8
Miami-Dade	2.8	5.9	4.1	2.0	2.6	2.3	4.5
Orange	1.2	1.7	1.7	0.5	0.9	1.6	1.5
Palm Beach	2.4	6.2	4.2	1.0	3.1	2.4	3.9
Florida	1.9	3.6	3.1	1.0	2.1	1.8	2.6
2008-09							
Broward	1.3	2.9	1.6	0.6	3.0	2.2	2.1
Hillsborough	0.7	1.3	1.2	0.3	0.9	0.8	1.0
Miami-Dade	2.4	5.3	3.5	1.7	2.8	2.4	3.9
Orange	0.8	1.6	1.0	0.2	0.5	0.6	1.1
Palm Beach	1.4	4.2	2.5	0.9	3.1	2.2	2.6
Florida	1.6	3.4	2.5	0.8	2.3	1.6	2.3

Appendix D

Graduation and Dropout Rates by School, 2008-09

School	Total Adjusted Cohort	NGA Compact Graduation Rate ¹		FDOE Graduation Rate ²		NCLB Graduation Rate ³		Dropout Rate
	<i>N</i>	<i>n</i>	%	<i>n</i>	%	<i>n</i>	%	%
High Schools								
Anderson, Boyd H. High	535	370	69.2	370	69.2	355	66.4	2.7
Atlantic Technical High School	115	114	99.1	114	99.1	114	99.1	0.0
Broward Virtual Education	92	64	69.6	64	69.6	64	69.6	1.2
Coconut Creek High	528	372	70.5	372	70.5	364	68.9	1.4
College Academy @ BCC Central	162	161	99.4	161	99.4	161	99.4	0.0
Cooper City High	556	536	96.4	536	96.4	525	94.4	0.1
Coral Glades High	538	464	86.2	464	86.2	457	84.9	0.2
Coral Springs High	544	456	83.8	458	84.2	451	82.9	0.4
Cypress Bay High	1,245	1,176	94.5	1,176	94.5	1,174	94.3	0.0
Deerfield Beach High	546	399	73.1	399	73.1	395	72.3	2.3
Dillard High	399	334	83.7	334	83.7	329	82.5	1.3
Douglas, Stoneman M. High	738	678	91.9	678	91.9	671	90.9	0.0
Ely, Blanche High	507	384	75.7	384	75.7	377	74.4	2.3
Everglades High	941	823	87.5	824	87.6	807	85.8	1.5
Flanagan, Charles W. High	715	651	91.0	652	91.2	646	90.3	0.0
Fort Lauderdale High	376	296	78.7	296	78.7	288	76.6	0.5
Hallandale High	348	247	71.0	247	71.0	238	68.4	0.0
Hollywood Hills High	465	368	79.1	368	79.1	365	78.5	0.0
McArthur High	530	405	76.4	406	76.6	402	75.8	0.9
McFatter, William Technical High School	140	129	92.1	130	92.9	130	92.9	0.9
Miramar High	660	549	83.2	549	83.2	541	82.0	0.2
Monarch High	508	448	88.2	448	88.2	442	87.0	0.3
Northeast High	475	373	78.5	374	78.7	372	78.3	1.2
Nova High	516	461	89.3	461	89.3	459	89.0	0.9
Piper High	615	490	79.7	490	79.7	477	77.6	2.1
Plantation High	575	410	71.3	410	71.3	405	70.4	2.4
Pompano Beach Instit. of Int'l. Studies	332	324	97.6	324	97.6	324	97.6	0.4
South Broward High	488	417	85.5	417	85.5	409	83.8	0.2
South Plantation High	584	473	81.0	475	81.3	468	80.1	2.3
Stranahan High	422	311	73.7	311	73.7	304	72.0	1.9
Taravella, J. P. High	658	555	84.3	555	84.3	549	83.4	0.0
West Broward High	--	--	--	--	--	--	--	0.0
Western High	590	526	89.2	526	89.2	515	87.3	0.1
Center Schools								
Bright Horizons School	13	2	15.4	2	15.4	0	0.0	2.7
Cross Creek School	22	6	27.3	6	27.3	4	18.2	1.2
Cypress Run Education Center	17	1	5.9	1	5.9	1	5.9	6.5
Dave Thomas Education Center	167	13	7.8	26	15.6	26	15.6	14.1

(Appendix continues)

Appendix D (continued)

School	Total Adjusted Cohort	NGA Compact Graduation Rate ¹		FDOE Graduation Rate ²		NCLB Graduation Rate ³		Dropout Rate
	<i>N</i>	<i>n</i>	%	<i>n</i>	%	<i>n</i>	%	%
Hallandale Adult & Community Center	200	12	6.0	25	12.5	25	12.5	21.6
Lanier-James Education Center	55	3	5.5	3	5.5	2	3.6	18.0
Off Campus Learning Centers	723	61	8.4	65	9.0	65	9.0	20.9
Pine Ridge Education Center	31	0	0.0	0	0.0	0	0.0	16.4
Quest Center, The	--	--	--	--	--	--	--	5.9
Seagull School	74	17	23.0	22	29.7	22	29.7	9.8
Sheridan Technical Center	--	--	--	--	--	--	--	--
Sunset School	25	4	16.0	4	16.0	3	12.0	15.7
Whiddon-Rogers Education Center	285	14	4.9	15	5.3	15	5.3	6.4
Whispering Pines School	31	7	22.6	7	22.6	4	12.9	10.1
Wingate Oaks Center	10	0	0.0	0	0.0	0	0.0	4.8
Charter Schools								
Coral Springs Charter School High	186	176	94.6	176	94.6	176	94.6	0.0
Dolphin Park High Charter	103	18	17.5	18	17.5	18	17.5	14.9
Eagle Academy	69	43	62.3	43	62.3	43	62.3	0.0
Lauderhill High Charter	102	10	9.8	10	9.8	10	9.8	0.6
Life Skills High	290	73	25.2	73	25.2	73	25.2	21.6
North University High Charter	92	19	20.7	19	20.7	19	20.7	7.9
Parkway Academy - High	88	58	65.9	58	65.9	58	65.9	2.4
Pembroke Pines Charter School - High	427	407	95.3	407	95.3	407	95.3	0.0
Somerset Academy High	117	99	84.6	99	84.6	99	84.6	1.8
Somerset Conservatory High	--	--	--	--	--	--	--	0.0

¹ NGA Compact Graduation Rate defines GED students as non-graduates.

² FDOE Graduation Rate defines GED students and Special diploma students as graduates.

³ NCLB Graduation Rate defines Special diploma students as non-graduates.

Note. "--" indicates that graduation and dropout data were removed for schools with less than 10 students in the cohort.

Appendix E

Comparison of NGA Graduation Rates and Dropout Rates by School, 2007-08 to 2008-09

School	NGA Graduation Rate 2007- 08 %	NGA Graduation Rate 2008- 09 %	Change in NGA Graduation Rate 2007-08 to 2008-09	Dropout Rate 2007-08 %	Dropout Rate 2008-09 %	Change in Dropout Rate 2007-08 to 2008-09
High Schools						
Anderson, Boyd H. High	62.4	69.2	6.8	4.1	2.7	-1.4
Atlantic Technical High School	88.1	99.1	11.0	0.4	0.0	-0.4
Broward Virtual Education	90.2	69.6	-20.6	2.0	1.2	-0.8
Coconut Creek High	62.0	70.5	8.4	2.3	1.4	-0.9
College Academy @ BCC Central	100.0	99.4	-0.6	0.0	0.0	0.0
Cooper City High	90.7	96.4	5.7	0.2	0.1	-0.1
Coral Glades High	86.2	86.2	0.1	1.1	0.2	-0.9
Coral Springs High	86.0	83.8	-2.2	0.5	0.4	-0.1
Cypress Bay High	90.3	94.5	4.2	0.9	0.0	-0.9
Deerfield Beach High	76.8	73.1	-3.7	2.2	2.3	0.1
Dillard High	70.2	83.7	13.5	1.8	1.3	-0.5
Douglas, Stoneman M. High	90.7	91.9	1.2	0.1	0.0	-0.1
Ely, Blanche High	82.8	75.7	-7.1	2.9	2.3	-0.6
Everglades High	82.5	87.5	5.0	2.1	1.5	-0.6
Flanagan, Charles W. High	86.6	91.0	4.4	0.3	0.0	-0.3
Fort Lauderdale High	83.0	78.7	-4.3	0.1	0.5	0.4
Hallandale High	71.0	71.0	0.0	0.4	0.0	-0.4
Hollywood Hills High	76.7	79.1	2.4	0.0	0.0	0.0
McArthur High	72.9	76.4	3.5	1.2	0.9	-0.3
McFatter, William Technical High School	89.0	92.1	3.2	1.1	0.9	-0.2
Miramar High	77.2	83.2	6.0	0.3	0.2	-0.1
Monarch High	85.9	88.2	2.3	0.4	0.3	-0.1
Northeast High	76.5	78.5	2.0	0.4	1.2	0.8
Nova High	87.5	89.3	1.8	1.5	0.9	-0.6
Piper High	77.3	79.7	2.4	1.6	2.1	0.5
Plantation High	71.4	71.3	-0.1	2.8	2.4	-0.4
Pompano Beach Instit. of Int'l. Studies	92.2	97.6	5.4	0.0	0.4	0.4
South Broward High	72.5	85.5	12.9	0.4	0.2	-0.2
South Plantation High	76.6	81.0	4.4	1.5	2.3	0.8
Stranahan High	74.5	73.7	-0.8	1.0	1.9	0.9
Taravella, J. P. High	89.5	84.3	-5.2	0.2	0.0	-0.2
West Broward High	--	--	--	0.0	0.0	0.0
Western High	89.1	89.2	0.0	0.1	0.1	0.0
Center Schools						
Bright Horizons School	0.0	15.4	15.4	2.0	2.7	0.7
Cross Creek School	0.0	27.3	27.3	6.8	1.2	-5.6
Cypress Run Education Center	0.0	5.9	5.9	2.1	6.5	4.4
Dave Thomas Education Center	14.4	7.8	-6.6	12.6	14.1	1.5

(Appendix continues)

Appendix E (continued)

School	NGA Graduation Rate 2007- 08 %	NGA Graduation Rate 2008- 09 %	Change in NGA Graduation Rate 2007-08 to 2008-09	Dropout Rate 2007-08 %	Dropout Rate 2008-09 %	Change in Dropout Rate 2007-08 to 2008-09
Hallandale Adult & Community Center	6.3	6.0	-0.3	1.1	21.6	20.5
Lanier-James Education Center	0.0	5.5	5.5	0.0	18.0	18.0
Off Campus Learning Centers	19.6	8.4	-11.1	20.4	20.9	0.5
Pine Ridge Education Center	0.0	0.0	0.0	4.7	16.4	11.7
Quest Center, The	0.0	--	--	28.6	5.9	-22.7
Seagull School	9.8	23.0	13.2	27.0	9.8	-17.2
Sheridan Technical Center	0.0	--	--	--	--	--
Sunset School	38.1	16.0	-22.1	4.0	15.7	11.7
Whiddon-Rogers Education Center	3.8	4.9	1.2	13.4	6.4	-7.0
Whispering Pines School	0.0	22.6	22.6	9.1	10.1	1.0
Wingate Oaks Center	0.0	0.0	0.0	0.0	4.8	4.8
Charter Schools						
Coral Springs Charter School High	84.0	94.6	10.6	0.0	0.0	0.0
Dolphin Park High Charter	--	17.5	--	0.0	14.9	14.9
Eagle Academy	--	62.3	--	0.0	0.0	0.0
Lauderhill High Charter	--	9.8	--	0.0	0.6	0.6
Life Skills High	51.0	25.2	-25.8	21.9	21.6	-0.3
North University High Charter	--	20.7	--	0.0	7.9	7.9
Parkway Academy - High	71.6	65.9	-5.7	2.5	2.4	-0.1
Pembroke Pines Charter School - High	89.1	95.3	6.2	0.1	0.0	-0.1
Somerset Academy High	68.8	84.6	15.8	1.3	1.8	0.5
Somerset Conservatory High	--	--	--	0.0	0.0	0.0

Note. "--" indicates that graduation and dropout data were removed for schools with less than 10 students in the cohort.

Data Report

Florida Public High School Graduation Rates, 2008-09

Series 2010-09D

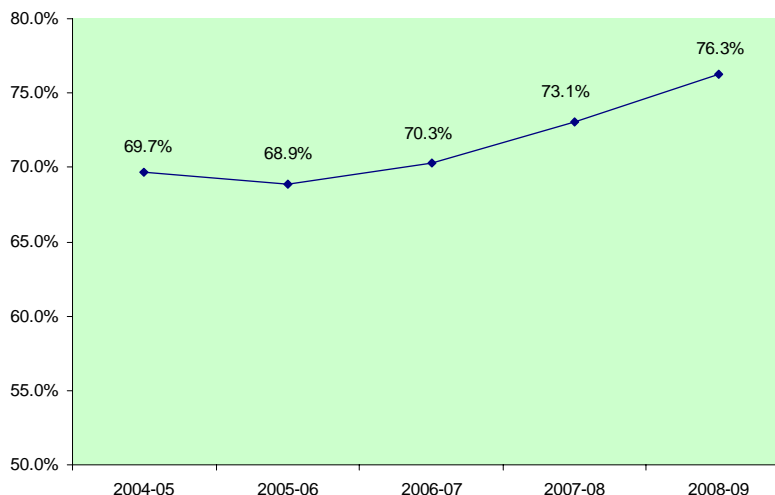
November 2009

Florida's Change to Reporting the NGA Compact Graduation Rate

In September 2009, the Florida State Board of Education (SBE) approved the state's new high school grading formula, which incorporates graduation rates into the grading of high schools. The graduation rate the SBE chose to use in the new grading formula is the state's National Governors Association (NGA) Compact rate, which includes standard and special diplomas but excludes GEDs, both regular and adult. Florida is using this rate in place of its regular rate because the U.S. Department of Education (ED) is moving all states to adopt a uniform calculation method by 2010-11, that includes standard diplomas but excludes GEDs and special diplomas. Using the NGA rate now helps to transition Florida to the new federal rate when it becomes effective.

Florida's NGA high school graduation rate has consistently increased during the past five years, fluctuating from 69.7 percent in 2004-05 to 76.3 percent in 2008-09.

Figure 1: Four-Year NGA Graduation Rate, 2004-05 through 2008-09



Florida calculates a cohort graduation rate. A cohort is defined as a group of students on the same schedule to graduate. The graduation rate measures the percentage of students who graduate within four years of their first enrollment in ninth grade. Subsequent to their enrollment in ninth grade, exiting transfers and deceased students are removed from the calculation. Entering transfer students are included in the count of the class with which they are scheduled to graduate, based on their date of enrollment. [NGA](http://doeweb-prd.doe.state.fl.us/eds/nclbpar/index.cfm) graduation rates have been reported in the No Child Left Behind (NCLB) School Public Accountability Reports (SPARs) since 2005-06 and are provided on-line at <http://doeweb-prd.doe.state.fl.us/eds/nclbpar/index.cfm>. District level graduation rates are provided in tables 8 through 14.

If you have further questions regarding the content of this publication, please contact the Florida Department of Education, Office of Education Information and Accountability Services at (850) 245-0400, or email askeias@fldoe.org.



Types of Graduation Rates Calculated in Florida

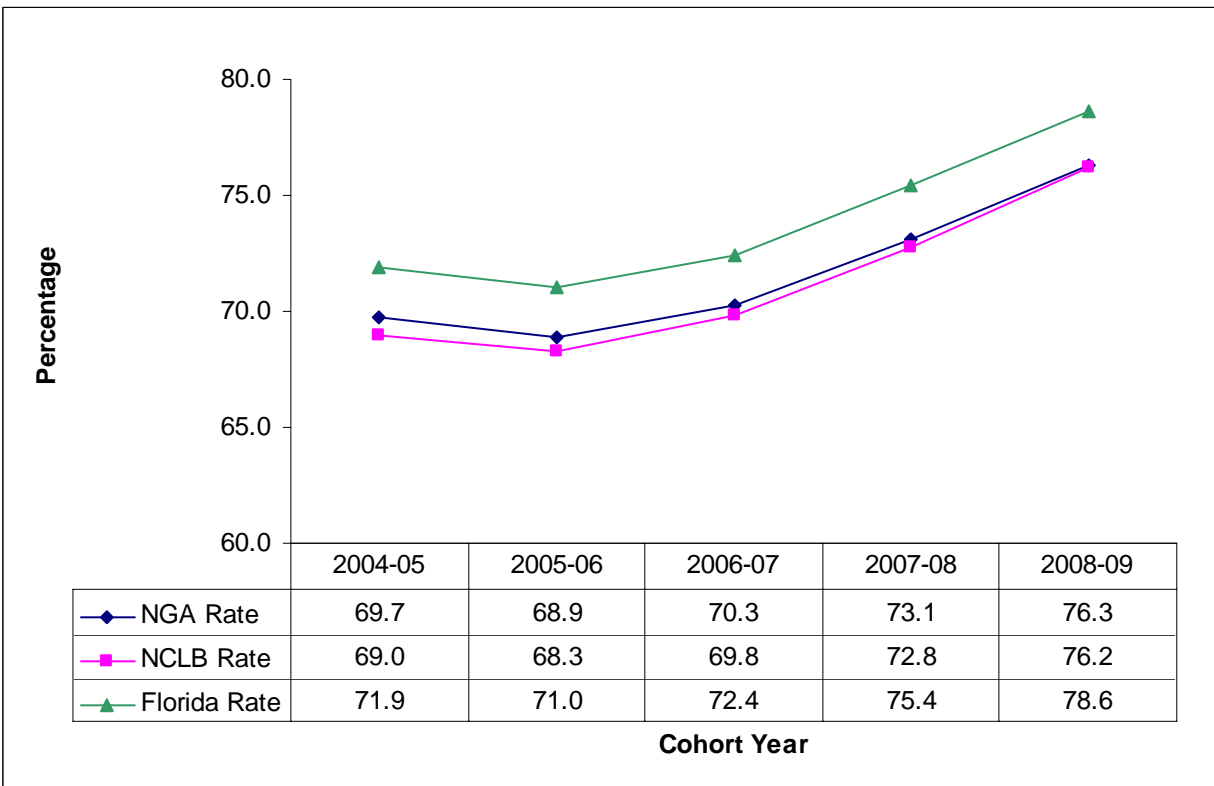
Florida currently calculates three graduation rates: the NGA rate, detailed above, was mandated by the Florida Legislature in 2006 to meet an agreement with the National Governors Association Compact and was first implemented using the data for 2004-05 and reported in the 2005-06 NCLB SPARs; a rate for No Child Left Behind (NCLB) reporting purposes, implemented in 2001; and Florida's regular rate that has been calculated consistently since 1998-99.

All three versions use the cohort method of tracking individual students in and out of the system from their entrance into the ninth grade through completion four years later. However, each rate defines a graduate differently. The differences between the NGA rate, the NCLB rate, and Florida's regular graduation rate are as follows:

- The NGA graduation rate counts as graduates recipients of standard and special diplomas but not GEDs.
- The NCLB graduation rate counts as graduates recipients of standard diplomas and GEDs awarded to high school students but not special diplomas and GEDs awarded to adult students.
- Florida's regular rate counts all diploma recipients as graduates. This includes standard and special diplomas and all GEDs.

The chart below shows an increase for all three versions of the graduation rate from 2004-05 to 2008-09.

Figure 2: Florida's Three Graduation Rates, 2004-05 through 2008-09



Graduation Rates by Race:

Table 1: NGA Graduation Rates by Race, 2004-05 through 2008-09

	White, Non-Hispanic	Black, Non-Hispanic	Hispanic	Asian/Pacific Islander	American Indian/Alaskan Native	Multiracial	Total
2004-05	78.3%	55.6%	62.8%	81.5%	69.5%	74.0%	69.7%
2005-06	77.4%	55.3%	62.0%	82.3%	73.1%	73.0%	68.9%
2006-07	78.6%	56.9%	64.3%	82.2%	71.8%	72.3%	70.3%
2007-08	80.8%	60.8%	67.6%	83.8%	76.1%	77.3%	73.1%
2008-09	83.1%	64.9%	72.1%	87.9%	76.8%	81.3%	76.3%

Table 2: NCLB Graduation Rates by Race, 2004-05 through 2008-09

	White, Non-Hispanic	Black, Non-Hispanic	Hispanic	Asian/Pacific Islander	American Indian/Alaskan Native	Multiracial	Total
2004-05	78.3%	52.9%	62.1%	81.2%	68.9%	75.1%	69.0%
2005-06	77.6%	52.8%	61.2%	82.5%	73.1%	73.9%	68.3%
2006-07	78.9%	54.6%	63.6%	82.4%	72.3%	73.8%	69.8%
2007-08	81.4%	58.7%	67.1%	83.8%	76.9%	78.2%	72.8%
2008-09	83.8%	63.3%	71.6%	88.1%	77.4%	82.4%	76.2%

Table 3: Regular Graduation Rates by Race, 2004-05 through 2008-09

	White, Non-Hispanic	Black, Non-Hispanic	Hispanic	Asian/Pacific Islander	American Indian/Alaskan Native	Multiracial	Total
2004-05	80.8%	57.1%	64.5%	82.2%	73.3%	77.7%	71.9%
2005-06	79.9%	56.9%	63.7%	83.2%	75.7%	75.9%	71.0%
2006-07	81.0%	58.7%	66.0%	83.2%	74.7%	75.4%	72.4%
2007-08	83.6%	62.5%	69.1%	84.2%	80.3%	80.5%	75.4%
2008-09	86.0%	66.7%	73.5%	88.9%	79.7%	83.7%	78.6%

Florida's Rates versus National Graduation Rate Rankings

Many national organizations, including the ED, and other interest groups **estimate** graduation rates, which usually differ significantly from one another. It can be quite confusing and often misleading when various organizations release national graduation rankings, but they do not match the rate Florida released. Student database systems and data collection methodologies vary from state to state, and national studies must rely on the lowest common denominators available across all states to make comparisons. Additionally, not all states have fully implemented a longitudinal data system, as Florida has. This means that national-level studies do not follow the precise methodology for calculating graduation rates that Florida uses, and are, therefore, merely estimates of graduating students rather than exact counts and percentages.

The ED mandated in October 2008 that all states implement a "uniform, comparable graduation rate," which is cohort-based, by 2010-11. As stated earlier, Florida has calculated a cohort graduation rate since 1998-99 and is well positioned to meet this mandate. As other states transition to the cohort method and the "uniform" graduation rate, calculations will be consistent across states and more valid national comparisons can be made.

Diploma Types

There are several types of diplomas Florida students may receive upon completion. A complete list of the diploma definitions and their applications to each calculation, respectively, are provided in Appendix A. Table 4 details the number of each type of diploma awarded for the past five cohorts.

Table 4: Diploma Types by Number of Diplomas Awarded (Cohort Based)

Diploma Types	2004-05	2005-06	2006-07	2007-08	2008-09
W06	116,470	119,779	122,391	125,650	127,855
W07	4,080	3,983	3,919	3,773	3,462
W10	2,234	2,385	2,614	2,604	2,585
W27	574	685	780	656	489
W43	291	310	338	393	343
W45	2,986	2,807	2,914	3,435	3,223
W52			1	11	14
W6A	837	417	210	89	62
W6B	228	111	41	19	18
WFA	32	42	36	14	12
WFB	2	11	11	2	8
WFT	569	1,632	3,985	6,546	9,410
WFW	2,187	2,779	2,883	2,870	2,767
WGA			13	53	81
WGD	1,017	1,129	1,140	1,156	995

Table 5: Diploma Definitions

W06 - Any student who graduated from school and met all of the requirements to receive a standard diploma
W07 - Any student who graduated from school with a special diploma based on option one--mastery of Sunshine State Standards for Special Diploma
W10 – Any student in a GED Exit Option Model who passed the GED Tests and the graduation test and was awarded a standard diploma
W27 - Any student who graduated from school with a special diploma based on option two-mastery of employment and community competencies
W43 - Any adult student who graduated from school with a standard diploma
W45 - Any adult student who left school with a State of Florida diploma (GED)
W52 - Any adult student who graduated from school with a standard diploma and satisfied the graduation test requirement through an alternate assessment
W6A - Any student who graduated from school and met all of the requirements to receive a standard diploma, based on the 18-credit college preparatory graduation option
W6B - Any student who graduated from school and met all of the requirements to receive a standard diploma, based on the 18-credit career preparatory graduation option
WFA – Any student who graduated from school with a standard diploma based on an 18-credit college preparatory graduation option and satisfied the graduation test requirement through an alternate assessment
WFB – Any student who graduated from school with a standard diploma based on an 18-credit career preparatory graduation option and satisfied the graduation test requirement through an alternate assessment
WFT - Any student who graduated from school with a standard diploma and satisfied the graduation test requirement through an alternate assessment (For students meeting accelerated high school graduation option requirements, see WFA and WFB.)
WFW – Any student who graduated from school with a standard diploma and an FCAT waiver
WGA – Any student in a GED Exit Option Model who passed the GED Tests, satisfied the graduation test requirement through an alternate assessment, and was awarded a standard diploma
WGD – Any student participating in the GED Exit Option Model who passed the GED Tests but did not pass the graduation test and was awarded a State of Florida diploma

Graduation Rates versus Dropout Rates

Further confusion occurs when comparing the graduation rates to the dropout rates. These rates are not inverses of one another. The differences are as follows:

The rates apply to different periods of measurement.

- Graduation rate is a four-year, cohort-based indicator.
- Dropout rate is a single-year indicator.

The rates apply to different populations.

- Graduation rate tracks the progress of a group of students who entered the same grade at the same time over a four-year period.
- Dropout rate tracks **all** ninth- through twelfth-grade students in a **single** year.

Florida's NGA graduation rate is 76.3 percent, but that doesn't mean that 23.7 percent of the cohort are dropouts. In a cohort students can be classified as graduates, dropouts, and non-graduates. The non-graduates are those students who have been retained and are still in school or students who received certificates of completion.

Dropout Rates

Florida's dropout rate is the percentage of ninth- through twelfth-grade dropouts compared to the ninth- through twelfth-grade total, year-long student membership. A dropout is defined as a student who withdraws from school for any of several reasons without transferring to another school, home education program, or adult education program. The definitions for a dropout are listed below in Table 7.

The 2008-09 dropout rate for Florida has declined for the third year in a row. District-level dropout rates are provided in Table 15.

Table 6: Dropouts by Race, 2004-05 through 2008-09

	White, Non-Hispanic	Black, Non-Hispanic	Hispanic	Asian/Pacific Islander	American Indian/Alaskan Native	Multiracial	Total
2004-05	2.4%	3.9%	3.6%	1.5%	2.9%	2.0%	3.0%
2005-06	2.6%	4.7%	4.3%	1.5%	3.1%	2.6%	3.5%
2006-07	2.4%	4.7%	3.9%	1.7%	2.6%	2.3%	3.3%
2007-08	1.9%	3.6%	3.1%	1.0%	2.1%	1.8%	2.6%
2008-09	1.6%	3.4%	2.5%	0.8%	2.3%	1.6%	2.3%

Table 7: Dropout Withdrawal Codes and Definitions

DNE - Any PK-12 student who was expected to attend a school but did not enter as expected for unknown reasons.
W05 - Any student age 16 or older who leaves school voluntarily with no intention of returning.
W13 - Any PK-12 student withdrawn from school due to court action.
W15 - Any PK-12 student who is withdrawn from school due to nonattendance.
W18 - Any PK-12 student who withdraws from school due to medical reasons.
W21 - Any PK-12 student who is withdrawn from school due to being expelled.
W22 - Any PK-12 student whose whereabouts is unknown.
W23 - Any PK-12 student who withdraws from school for any reason other than W01 - W22 or W24 - W27.

Table 8: NGA, NCLB, and Florida Graduation Rates, by District 2008-09

	District	NGA	NCLB	Florida
01	Alachua	66.5%	63.9%	66.7%
02	Baker	85.3%	83.5%	87.5%
03	Bay	77.1%	77.9%	79.4%
04	Bradford	72.1%	72.1%	78.4%
05	Brevard	94.7%	93.1%	95.3%
06	Broward	73.9%	73.1%	74.2%
07	Calhoun	91.6%	85.3%	92.2%
08	Charlotte	77.0%	82.6%	84.3%
09	Citrus	81.8%	81.7%	84.6%
10	Clay	75.3%	79.8%	81.7%
11	Collier	77.2%	74.5%	78.7%
12	Columbia	82.0%	80.3%	87.8%
13	Dade	68.5%	68.2%	68.9%
14	DeSoto	64.7%	69.0%	72.0%
15	Dixie	74.0%	72.7%	74.0%
16	Duval	64.5%	66.6%	69.6%
17	Escambia	77.0%	73.2%	77.8%
18	Flagler	81.3%	77.2%	81.3%
19	Franklin	77.9%	82.6%	86.0%
20	Gadsden	60.3%	62.6%	64.2%
21	Gilchrist	94.7%	95.3%	96.5%
22	Glades	60.0%	61.0%	63.0%
23	Gulf	89.4%	88.8%	89.5%
24	Hamilton	58.6%	53.6%	58.6%
25	Hardee	71.9%	66.0%	72.6%
26	Hendry	73.5%	71.4%	76.5%
27	Hernando	75.4%	75.4%	78.5%
28	Highlands	73.3%	73.2%	76.3%
29	Hillsborough	82.2%	82.4%	84.6%
30	Holmes	80.3%	85.2%	87.3%
31	Indian River	82.1%	83.8%	86.1%
32	Jackson	80.8%	79.7%	85.0%
33	Jefferson	53.8%	50.0%	62.8%
34	Lafayette	79.7%	78.1%	79.7%
35	Lake	77.0%	77.9%	80.8%
36	Lee	77.6%	75.6%	78.3%
37	Leon	74.3%	77.8%	81.0%
38	Levy	67.0%	66.3%	67.9%
39	Liberty	74.4%	86.0%	93.8%
40	Madison	73.3%	75.6%	80.4%
41	Manatee	74.5%	74.3%	79.4%
42	Marion	73.7%	75.3%	78.9%
43	Martin	92.2%	90.4%	93.9%
44	Monroe	81.5%	83.7%	87.4%
45	Nassau	76.3%	82.0%	84.8%
46	Okaloosa	88.7%	90.0%	91.7%
47	Okeechobee	64.4%	66.2%	69.3%
48	Orange	75.9%	75.3%	77.4%
49	Osceola	78.4%	75.6%	79.2%
50	Palm Beach	77.7%	78.0%	80.1%
51	Pasco	77.8%	79.8%	83.5%
52	Pinellas	77.2%	78.3%	80.6%
53	Polk	71.6%	70.0%	74.7%
54	Putnam	70.4%	69.9%	78.4%
55	St. Johns	89.3%	89.1%	90.8%
56	St. Lucie	81.0%	79.5%	81.1%
57	Santa Rosa	88.1%	85.4%	89.0%
58	Sarasota	80.5%	82.7%	85.1%
59	Seminole	92.0%	92.0%	93.0%
60	Sumter	83.2%	80.3%	85.0%
61	Suwannee	61.7%	69.7%	72.4%
62	Taylor	72.9%	70.6%	75.1%
63	Union	80.7%	76.3%	80.7%
64	Volusia	80.5%	76.7%	82.0%
65	Wakulla	80.0%	79.3%	84.0%
66	Walton	79.4%	80.5%	82.3%
67	Washington	84.5%	83.3%	85.0%
68	Deaf/Blind	91.8%	54.1%	91.8%
69	Dozier/Okee	9.1%	60.0%	72.7%
72	FAU	100.0%	100.0%	100.0%
73	FSU	97.8%	98.5%	98.5%
74	FAMU	93.5%	93.5%	93.5%
75	UF	95.6%	95.6%	95.6%
	FLORIDA	76.3%	76.2%	78.6%

*Source: 2008-09 Florida Department of Education (FL DOE) cohort graduation data as of 9/25/09.

Table 9: NGA Graduation Rates, 2004-05 through 2008-09*

	District	2004-05	2005-06	2006-07	2007-08	2008-09
01	Alachua	66.1%	66.3%	65.2%	67.6%	66.5%
02	Baker	66.0%	68.0%	76.3%	74.9%	85.3%
03	Bay	76.0%	75.8%	76.8%	76.1%	77.1%
04	Bradford	71.1%	64.4%	68.7%	70.3%	72.1%
05	Brevard	90.6%	89.5%	91.2%	92.5%	94.7%
06	Broward	67.0%	67.8%	66.3%	69.7%	73.9%
07	Calhoun	93.5%	87.4%	80.4%	92.1%	91.6%
08	Charlotte	70.5%	74.1%	75.9%	78.5%	77.0%
09	Citrus	69.5%	70.0%	74.3%	75.7%	81.8%
10	Clay	67.9%	68.3%	68.6%	70.5%	75.3%
11	Collier	72.8%	73.3%	71.9%	74.5%	77.2%
12	Columbia	67.9%	62.8%	67.2%	73.0%	82.0%
13	Dade	59.2%	58.7%	63.4%	65.4%	68.5%
14	DeSoto	56.9%	63.9%	62.8%	61.2%	64.7%
15	Dixie	66.0%	70.4%	75.0%	76.6%	74.0%
16	Duval	62.3%	57.4%	59.8%	61.3%	64.5%
17	Escambia	72.4%	73.7%	74.0%	74.5%	77.0%
18	Flagler	79.7%	78.4%	77.1%	80.9%	81.3%
19	Franklin	77.4%	60.4%	55.0%	54.0%	77.9%
20	Gadsden	44.7%	41.8%	46.6%	52.5%	60.3%
21	Gilchrist	82.1%	76.1%	84.0%	90.2%	94.7%
22	Glades	54.3%	57.3%	50.6%	35.6%	60.0%
23	Gulf	91.4%	83.7%	85.1%	89.0%	89.4%
24	Hamilton	53.5%	52.5%	50.4%	56.4%	58.6%
25	Hardee	65.7%	69.7%	72.1%	65.6%	71.9%
26	Hendry	66.9%	70.2%	65.0%	72.5%	73.5%
27	Hernando	71.9%	72.9%	72.8%	74.3%	75.4%
28	Highlands	71.3%	68.0%	69.3%	67.4%	73.3%
29	Hillsborough	76.7%	74.5%	76.3%	77.0%	82.2%
30	Holmes	77.4%	68.3%	70.6%	77.0%	80.3%
31	Indian River	82.2%	81.0%	78.7%	80.6%	82.1%
32	Jackson	75.6%	85.5%	80.1%	83.6%	80.8%
33	Jefferson	55.1%	50.0%	58.1%	47.3%	53.8%
34	Lafayette	79.4%	81.7%	77.8%	92.0%	79.7%
35	Lake	70.6%	67.5%	69.5%	75.0%	77.0%
36	Lee	68.0%	69.3%	70.6%	76.9%	77.6%
37	Leon	76.2%	72.5%	72.7%	73.5%	74.3%
38	Levy	65.3%	63.8%	64.3%	67.3%	67.0%
39	Liberty	67.0%	52.9%	57.9%	69.2%	74.4%
40	Madison	58.3%	55.8%	59.6%	61.5%	73.3%
41	Manatee	76.6%	70.9%	73.4%	73.3%	74.5%
42	Marion	68.1%	63.1%	65.4%	67.1%	73.7%
43	Martin	83.3%	90.7%	88.9%	90.3%	92.2%
44	Monroe	73.4%	71.5%	76.5%	78.5%	81.5%
45	Nassau	72.9%	71.4%	70.2%	70.9%	76.3%
46	Okaloosa	81.9%	81.2%	80.9%	87.5%	88.7%
47	Okeechobee	58.5%	57.2%	57.9%	62.4%	64.4%
48	Orange	72.7%	70.6%	69.7%	73.6%	75.9%
49	Osceola	66.9%	63.2%	65.5%	69.3%	78.4%
50	Palm Beach	67.5%	68.2%	70.2%	73.6%	77.7%
51	Pasco	70.2%	68.1%	67.8%	73.4%	77.8%
52	Pinellas	68.5%	66.1%	66.3%	71.4%	77.2%
53	Polk	66.5%	65.4%	67.2%	69.9%	71.6%
54	Putnam	73.3%	68.4%	71.0%	71.1%	70.4%
55	St. Johns	75.4%	75.7%	76.7%	87.1%	89.3%
56	St. Lucie	73.8%	72.7%	75.3%	77.9%	81.0%
57	Santa Rosa	82.0%	84.2%	85.9%	86.4%	88.1%
58	Sarasota	78.1%	75.6%	78.8%	81.5%	80.5%
59	Seminole	80.6%	84.2%	85.8%	90.2%	92.0%
60	Sumter	73.2%	74.5%	77.6%	81.6%	83.2%
61	Suwannee	58.4%	62.5%	67.9%	63.2%	61.7%
62	Taylor	77.4%	76.1%	74.7%	70.6%	72.9%
63	Union	80.7%	74.5%	81.7%	71.4%	80.7%
64	Volusia	81.5%	80.2%	80.9%	80.3%	80.5%
65	Wakulla	82.5%	74.6%	78.5%	78.1%	80.0%
66	Walton	76.9%	75.2%	72.0%	76.5%	79.4%
67	Washington	68.8%	69.4%	70.4%	82.7%	84.5%
68	Deaf/Blind	86.4%	89.5%	89.5%	95.1%	91.8%
69	Dozier/Okee	2.2%	3.0%	5.6%	4.9%	9.1%
72	FAU	100.0%	100.0%	100.0%	100.0%	100.0%
73	FSU	88.4%	91.5%	95.7%	93.5%	97.8%
74	FAMU	77.8%	78.9%	78.1%	67.5%	93.5%
75	UF	95.9%	98.0%	93.8%	95.9%	95.6%
	FLORIDA	69.7%	68.9%	70.3%	73.1%	76.3%

*Source: 2008-09 Florida Department of Education (FL DOE) cohort graduation data as of 9/25/09.

Table 10: NCLB Graduation Rates, 2004-05 through 2008-09*

	District	2004-05	2005-06	2006-07	2007-08	2008-09
01	Alachua	65.3%	66.4%	63.1%	64.7%	63.9%
02	Baker	68.6%	70.1%	74.4%	74.9%	83.5%
03	Bay	74.7%	74.2%	75.3%	76.3%	77.9%
04	Bradford	68.7%	62.4%	63.4%	68.3%	72.1%
05	Brevard	89.1%	88.5%	89.6%	90.8%	93.1%
06	Broward	65.8%	66.3%	65.0%	68.6%	73.1%
07	Calhoun	89.9%	81.8%	79.0%	89.3%	85.3%
08	Charlotte	74.7%	76.6%	78.9%	82.6%	82.6%
09	Citrus	69.5%	71.1%	73.3%	74.9%	81.7%
10	Clay	73.3%	72.2%	73.6%	75.6%	79.8%
11	Collier	70.3%	70.4%	70.1%	71.9%	74.5%
12	Columbia	67.8%	61.2%	68.1%	72.3%	80.3%
13	Dade	59.1%	58.5%	63.0%	65.0%	68.2%
14	DeSoto	62.5%	67.0%	67.6%	62.4%	69.0%
15	Dixie	66.0%	69.6%	71.7%	72.4%	72.7%
16	Duval	63.6%	59.0%	61.3%	62.9%	66.6%
17	Escambia	68.6%	69.5%	70.4%	70.1%	73.2%
18	Flagler	76.9%	75.9%	72.4%	76.6%	77.2%
19	Franklin	77.4%	60.4%	54.1%	56.3%	82.6%
20	Gadsden	43.9%	41.5%	51.5%	54.8%	62.6%
21	Gilchrist	84.2%	78.2%	85.6%	89.0%	95.3%
22	Glades	61.4%	57.3%	59.7%	41.4%	61.0%
23	Gulf	90.1%	80.3%	84.5%	86.9%	88.8%
24	Hamilton	61.6%	61.5%	63.0%	58.3%	53.6%
25	Hardee	61.7%	66.1%	66.4%	61.9%	66.0%
26	Hendry	65.8%	65.2%	63.1%	68.4%	71.4%
27	Hernando	69.7%	70.4%	70.5%	73.9%	75.4%
28	Highlands	66.6%	64.2%	67.7%	65.1%	73.2%
29	Hillsborough	76.8%	74.7%	76.4%	77.8%	82.4%
30	Holmes	75.4%	66.7%	72.2%	82.3%	85.2%
31	Indian River	81.4%	80.2%	80.1%	80.8%	83.8%
32	Jackson	72.5%	80.5%	76.4%	82.8%	79.7%
33	Jefferson	59.0%	50.0%	53.5%	46.2%	50.0%
34	Lafayette	73.5%	74.4%	77.8%	88.0%	78.1%
35	Lake	68.7%	67.0%	69.8%	75.1%	77.9%
36	Lee	66.2%	68.0%	68.9%	74.7%	75.6%
37	Leon	75.5%	72.9%	76.2%	77.5%	77.8%
38	Levy	62.9%	60.8%	61.7%	70.4%	66.3%
39	Liberty	82.1%	81.8%	79.7%	87.9%	86.0%
40	Madison	58.3%	49.2%	57.7%	61.5%	75.6%
41	Manatee	74.5%	71.0%	72.4%	73.8%	74.3%
42	Marion	65.8%	65.4%	68.7%	69.0%	75.3%
43	Martin	82.6%	90.7%	87.3%	89.6%	90.4%
44	Monroe	74.3%	72.7%	79.4%	81.8%	83.7%
45	Nassau	80.2%	79.2%	76.7%	76.9%	82.0%
46	Okaloosa	84.0%	84.5%	83.2%	89.7%	90.0%
47	Okeechobee	58.0%	59.4%	60.7%	67.3%	66.2%
48	Orange	70.3%	69.0%	68.6%	72.9%	75.3%
49	Osceola	63.5%	60.3%	62.3%	65.6%	75.6%
50	Palm Beach	66.4%	66.9%	69.5%	73.0%	78.0%
51	Pasco	71.8%	69.6%	69.2%	75.5%	79.8%
52	Pinellas	66.9%	65.2%	65.9%	71.9%	78.3%
53	Polk	64.1%	63.1%	65.3%	68.1%	70.0%
54	Putnam	72.5%	67.3%	70.7%	70.1%	69.9%
55	St. Johns	75.1%	75.4%	75.6%	87.4%	89.1%
56	St. Lucie	71.9%	71.2%	73.7%	76.0%	79.5%
57	Santa Rosa	81.4%	82.2%	84.1%	85.1%	85.4%
58	Sarasota	78.4%	76.2%	79.7%	82.2%	82.7%
59	Seminole	80.3%	83.6%	85.7%	89.5%	92.0%
60	Sumter	71.2%	71.3%	77.2%	77.3%	80.3%
61	Suwannee	57.4%	63.5%	70.4%	67.2%	69.7%
62	Taylor	75.6%	74.3%	70.0%	69.7%	70.6%
63	Union	83.4%	75.8%	79.6%	69.8%	76.3%
64	Volusia	78.0%	76.7%	76.7%	77.1%	76.7%
65	Wakulla	79.7%	72.1%	75.2%	75.8%	79.3%
66	Walton	76.9%	74.9%	72.2%	80.0%	80.5%
67	Washington	67.4%	69.0%	69.5%	81.1%	83.3%
68	Deaf/Blind	35.8%	37.2%	51.2%	49.4%	54.1%
69	Dozier/Okee	59.7%	52.6%	49.4%	45.1%	60.0%
72	FAU	100.0%	100.0%	100.0%	100.0%	100.0%
73	FSU	93.2%	95.0%	97.9%	98.6%	98.5%
74	FAMU	77.8%	81.6%	78.1%	70.0%	93.5%
75	UF	95.9%	98.0%	93.8%	95.9%	95.6%
	FLORIDA	69.0%	68.3%	69.8%	72.8%	76.2%

*Source: 2008-09 Florida Department of Education (FL DOE) cohort graduation data as of 9/25/09.

Table 11: Graduation Rates, Florida's Calculation, 2004-05 through 2008-09*

	District	2004-05	2005-06	2006-07	2007-08	2008-09
01	Alachua	69.6%	69.8%	68.2%	68.3%	66.7%
02	Baker	72.2%	73.1%	77.9%	77.5%	87.5%
03	Bay	78.1%	77.5%	78.7%	78.5%	79.4%
04	Bradford	76.1%	69.5%	70.7%	75.4%	78.4%
05	Brevard	91.5%	90.7%	92.1%	93.3%	95.3%
06	Broward	67.1%	67.8%	66.3%	68.8%	74.2%
07	Calhoun	94.3%	89.6%	82.5%	93.3%	92.2%
08	Charlotte	76.7%	78.0%	81.6%	84.6%	84.3%
09	Citrus	73.3%	73.2%	76.1%	77.8%	84.6%
10	Clay	75.1%	73.8%	75.3%	77.6%	81.7%
11	Collier	74.3%	74.7%	73.6%	75.8%	78.7%
12	Columbia	74.7%	67.4%	74.1%	77.6%	87.8%
13	Dade	59.9%	59.2%	63.9%	65.8%	68.9%
14	DeSoto	63.5%	70.0%	70.5%	66.5%	72.0%
15	Dixie	66.5%	70.4%	75.3%	76.6%	74.0%
16	Duval	65.5%	60.5%	64.3%	65.9%	69.6%
17	Escambia	73.2%	74.8%	75.2%	75.7%	77.8%
18	Flagler	79.7%	78.4%	77.1%	80.9%	81.3%
19	Franklin	80.0%	60.7%	56.5%	57.8%	86.0%
20	Gadsden	45.9%	43.9%	53.3%	56.1%	64.2%
21	Gilchrist	85.4%	78.7%	86.0%	92.1%	96.5%
22	Glades	67.1%	63.4%	62.3%	43.7%	63.0%
23	Gulf	91.4%	83.8%	85.1%	89.1%	89.5%
24	Hamilton	65.7%	63.2%	68.1%	60.0%	58.6%
25	Hardee	66.3%	70.3%	72.7%	66.5%	72.6%
26	Hendry	69.3%	72.1%	68.3%	74.0%	76.5%
27	Hernando	74.5%	74.1%	75.1%	76.9%	78.5%
28	Highlands	72.8%	69.6%	73.0%	71.2%	76.3%
29	Hillsborough	79.5%	77.3%	79.1%	80.0%	84.6%
30	Holmes	80.6%	71.3%	76.2%	84.3%	87.3%
31	Indian River	85.3%	84.7%	82.9%	83.5%	86.1%
32	Jackson	78.6%	87.8%	81.7%	85.7%	85.0%
33	Jefferson	68.1%	53.5%	64.2%	57.5%	62.8%
34	Lafayette	79.4%	81.7%	79.4%	92.0%	79.7%
35	Lake	72.2%	70.1%	73.5%	79.3%	80.8%
36	Lee	69.4%	71.5%	71.8%	77.8%	78.3%
37	Leon	79.8%	76.2%	79.0%	81.2%	81.0%
38	Levy	64.8%	65.6%	66.4%	72.1%	67.9%
39	Liberty	90.4%	89.7%	90.7%	95.9%	93.8%
40	Madison	63.0%	58.5%	66.9%	69.5%	80.4%
41	Manatee	81.5%	76.9%	78.7%	79.3%	79.4%
42	Marion	72.3%	71.8%	74.9%	73.8%	78.9%
43	Martin	84.9%	93.2%	91.2%	91.9%	93.9%
44	Monroe	76.7%	75.5%	83.6%	85.5%	87.4%
45	Nassau	85.2%	81.8%	80.7%	81.1%	84.8%
46	Okaloosa	85.2%	86.0%	84.7%	90.5%	91.7%
47	Okeechobee	62.5%	62.8%	64.0%	70.7%	69.3%
48	Orange	73.8%	72.2%	71.7%	75.6%	77.4%
49	Osceola	67.7%	64.5%	66.6%	67.5%	79.2%
50	Palm Beach	69.0%	69.3%	71.8%	75.6%	80.1%
51	Pasco	76.5%	74.4%	73.7%	79.5%	83.5%
52	Pinellas	70.1%	67.0%	67.3%	74.4%	80.6%
53	Polk	70.5%	68.8%	70.6%	73.6%	74.7%
54	Putnam	78.1%	76.4%	78.6%	78.0%	78.4%
55	St. Johns	76.8%	76.7%	78.3%	89.4%	90.8%
56	St. Lucie	73.6%	72.7%	75.4%	77.9%	81.1%
57	Santa Rosa	84.5%	85.5%	86.8%	87.6%	89.0%
58	Sarasota	81.7%	79.9%	83.5%	86.0%	85.1%
59	Seminole	81.3%	83.4%	86.7%	91.1%	93.0%
60	Sumter	75.7%	76.3%	81.1%	83.5%	85.0%
61	Suwannee	62.0%	65.1%	74.4%	71.6%	72.4%
62	Taylor	78.7%	78.3%	77.4%	74.0%	75.1%
63	Union	84.1%	76.7%	81.7%	71.4%	80.7%
64	Volusia	83.0%	81.9%	82.6%	81.9%	82.0%
65	Wakulla	85.5%	77.6%	82.5%	81.6%	84.0%
66	Walton	77.8%	76.1%	74.2%	81.5%	82.3%
67	Washington	68.5%	69.8%	71.5%	83.1%	85.0%
68	Deaf/Blind	86.4%	88.4%	89.5%	95.1%	91.8%
69	Dozier/Okee	61.0%	58.2%	55.6%	59.5%	72.7%
72	FAU	100.0%	100.0%	100.0%	100.0%	100.0%
73	FSU	92.5%	95.0%	97.9%	98.6%	98.5%
74	FAMU	77.8%	89.5%	78.1%	70.0%	93.5%
75	UF	94.9%	98.0%	93.8%	95.9%	95.6%
	FLORIDA	71.9%	71.0%	72.4%	75.4%	78.6%

*Source: 2008-09 Florida Department of Education (FL DOE) cohort graduation data as of 9/25/09.

Table 12: NGA Graduation Rates by Race, 2008-09

District	White, Non-Hispanic	Black, Non-Hispanic	Hispanic	Asian/Pacific Islander	American Indian/Alaskan Native	Multiracial	Total
01 Alachua	73.8%	57.0%	56.1%	75.3%	0.0%	66.7%	66.5%
02 Baker	87.3%	71.1%	100.0%		100.0%	100.0%	85.3%
03 Bay	79.2%	68.1%	63.8%	93.3%	50.0%	75.0%	77.1%
04 Bradford	71.9%	70.9%	83.3%	100.0%	100.0%	33.3%	72.1%
05 Brevard	95.6%	90.6%	91.5%	98.5%	100.0%	94.3%	94.7%
06 Broward	82.5%	64.1%	76.3%	88.5%	80.8%	80.2%	73.9%
07 Calhoun	92.3%	90.0%	100.0%	100.0%	100.0%	50.0%	91.6%
08 Charlotte	77.9%	72.2%	66.7%	85.2%	75.0%	81.6%	77.0%
09 Citrus	83.0%	60.6%	78.2%	95.7%	50.0%	90.5%	81.8%
10 Clay	78.6%	64.4%	63.2%	76.5%	66.7%	72.1%	75.3%
11 Collier	86.5%	69.0%	66.8%	85.2%	75.0%	73.7%	77.2%
12 Columbia	84.0%	73.9%	92.0%	100.0%	66.7%	80.0%	82.0%
13 Dade	77.6%	59.9%	70.3%	83.3%	75.0%	80.3%	68.5%
14 DeSoto	63.4%	65.6%	66.3%	75.0%			64.7%
15 Dixie	73.3%	78.6%	100.0%				74.0%
16 Duval	70.2%	57.8%	58.5%	83.1%	54.5%	71.9%	64.5%
17 Escambia	83.7%	64.3%	84.2%	94.6%	94.7%	77.3%	77.0%
18 Flagler	84.8%	63.9%	82.5%	89.5%	100.0%	68.0%	81.3%
19 Franklin	77.3%	80.0%					77.9%
20 Gadsden	31.6%	62.8%	53.8%	0.0%		100.0%	60.3%
21 Gilchrist	95.1%	80.0%	100.0%		100.0%		94.7%
22 Glades	65.0%	62.1%	51.7%	0.0%		100.0%	60.0%
23 Gulf	88.0%	95.7%	100.0%		100.0%	100.0%	89.4%
24 Hamilton	69.4%	49.2%	33.3%	75.0%		100.0%	58.6%
25 Hardee	80.0%	60.0%	67.3%	40.0%	100.0%		71.9%
26 Hendry	76.8%	80.5%	67.0%	80.0%	100.0%	91.7%	73.5%
27 Hernando	76.0%	73.0%	71.8%	79.2%	57.1%	81.6%	75.4%
28 Highlands	78.5%	70.7%	59.8%	100.0%	60.0%	85.7%	73.3%
29 Hillsborough	87.5%	73.4%	77.8%	93.4%	82.1%	86.6%	82.2%
30 Holmes	82.9%	0.0%	0.0%		100.0%	100.0%	80.3%
31 Indian River	86.9%	70.3%	70.1%	88.2%	66.7%	72.7%	82.1%
32 Jackson	82.5%	76.7%	90.0%	100.0%		62.5%	80.8%
33 Jefferson	6.3%	65.6%	50.0%			100.0%	53.8%
34 Lafayette	81.0%	90.0%	60.0%	100.0%		100.0%	79.7%
35 Lake	80.4%	68.9%	69.3%	90.9%	50.0%	75.4%	77.0%
36 Lee	83.9%	63.7%	71.4%	81.8%	76.0%	73.8%	77.6%
37 Leon	84.2%	58.7%	75.4%	93.4%	100.0%	76.6%	74.3%
38 Levy	69.5%	67.6%	34.6%	71.4%	100.0%	33.3%	67.0%
39 Liberty	75.7%	66.7%	50.0%	100.0%		100.0%	74.4%
40 Madison	78.6%	69.2%	50.0%	100.0%	0.0%		73.3%
41 Manatee	81.0%	62.2%	59.1%	86.4%	50.0%	68.5%	74.5%
42 Marion	76.4%	66.4%	69.6%	88.9%	78.6%	74.7%	73.7%
43 Martin	95.9%	80.5%	78.7%	100.0%		95.7%	92.2%
44 Monroe	85.7%	77.2%	71.4%	87.5%	33.3%	88.2%	81.5%
45 Nassau	77.1%	71.8%	73.9%	83.3%	75.0%	50.0%	76.3%
46 Okaloosa	89.7%	82.0%	84.9%	86.0%	90.0%	91.7%	88.7%
47 Okeechobee	69.3%	59.4%	56.1%	100.0%	45.5%	50.0%	64.4%
48 Orange	82.8%	65.1%	74.6%	89.7%	88.9%	82.4%	75.9%
49 Osceola	85.0%	75.3%	74.2%	87.9%	60.0%	77.3%	78.4%
50 Palm Beach	87.7%	63.8%	74.2%	88.3%	77.2%	87.5%	77.7%
51 Pasco	78.3%	72.8%	74.7%	86.2%	92.3%	82.2%	77.8%
52 Pinellas	82.8%	60.5%	64.8%	84.3%	63.6%	71.3%	77.2%
53 Polk	76.8%	64.7%	62.3%	87.3%	87.5%	72.3%	71.6%
54 Putnam	72.0%	67.0%	69.2%	85.7%		63.6%	70.4%
55 St. Johns	90.4%	76.6%	89.5%	94.1%	100.0%	80.6%	89.3%
56 St. Lucie	87.7%	73.8%	76.5%	91.1%	85.7%	84.1%	81.0%
57 Santa Rosa	88.3%	87.2%	85.5%	94.6%	66.7%	86.7%	88.1%
58 Sarasota	84.9%	65.3%	60.8%	82.7%	83.3%	89.9%	80.5%
59 Seminole	94.9%	82.1%	87.0%	96.0%	80.0%	95.0%	92.0%
60 Sumter	84.4%	81.0%	80.0%	100.0%	0.0%	100.0%	83.2%
61 Suwannee	63.5%	50.0%	52.9%	80.0%	0.0%	100.0%	61.7%
62 Taylor	71.6%	75.0%	66.7%	100.0%	100.0%		72.9%
63 Union	84.7%	71.4%	0.0%			0.0%	80.7%
64 Volusia	85.2%	67.1%	69.8%	85.9%	84.6%	77.8%	80.5%
65 Wakulla	82.3%	63.4%	100.0%			100.0%	80.0%
66 Walton	81.6%	54.5%	70.6%	83.3%	100.0%	100.0%	79.4%
67 Washington	84.6%	82.4%	66.7%	100.0%	100.0%	100.0%	84.5%
68 Deaf/Blind	93.2%	86.4%	100.0%	100.0%	0.0%	100.0%	91.8%
69 Dozier/Okee	12.5%	3.4%	50.0%				9.1%
72 FAU	100.0%	100.0%	100.0%	100.0%		100.0%	100.0%
73 FSU	96.1%	100.0%	100.0%		100.0%	100.0%	97.8%
74 FAMU		93.3%				100.0%	93.5%
75 UF	94.2%	100.0%	100.0%			66.7%	95.6%
FLORIDA	83.1%	64.9%	72.1%	87.9%	76.8%	81.3%	76.3%

*Source: 2008-09 Florida Department of Education (FL DOE) cohort graduation data as of 9/25/09.

Table 13: NCLB Graduation Rates by Race, 2008-09

District	White, Non-Hispanic	Black, Non-Hispanic	Hispanic	Asian/Pacific Islander	American Indian/Alaskan Native	Multiracial	Total
01 Alachua	72.6%	52.0%	52.9%	75.3%	0.0%	66.7%	63.9%
02 Baker	85.8%	66.7%	100.0%		100.0%	100.0%	83.5%
03 Bay	79.9%	69.2%	63.8%	93.3%	50.0%	78.8%	77.9%
04 Bradford	73.0%	70.9%	66.7%	100.0%	100.0%	0.0%	72.1%
05 Brevard	94.5%	86.6%	88.0%	98.5%	93.3%	94.3%	93.1%
06 Broward	81.8%	63.0%	75.9%	88.4%	80.8%	79.1%	73.1%
07 Calhoun	86.3%	85.0%	100.0%		100.0%	50.0%	85.3%
08 Charlotte	84.0%	72.9%	71.8%	88.9%	100.0%	84.2%	82.6%
09 Citrus	83.1%	59.1%	76.4%	95.7%	50.0%	85.7%	81.7%
10 Clay	82.5%	68.5%	77.4%	76.5%	66.7%	74.4%	79.8%
11 Collier	85.0%	65.1%	62.8%	85.2%	75.0%	78.9%	74.5%
12 Columbia	82.8%	69.4%	92.0%	100.0%	66.7%	80.0%	80.3%
13 Dade	78.4%	58.8%	70.3%	83.3%	75.0%	80.3%	68.2%
14 DeSoto	70.3%	67.2%	67.4%	75.0%			69.0%
15 Dixie	71.9%	78.6%	100.0%				72.7%
16 Duval	74.3%	58.1%	59.6%	83.4%	54.5%	77.0%	66.6%
17 Escambia	81.3%	58.1%	80.7%	94.6%	84.2%	77.3%	73.2%
18 Flagler	80.6%	58.6%	78.8%	89.5%	100.0%	68.0%	77.2%
19 Franklin	83.3%	80.0%					82.6%
20 Gadsden	31.6%	65.5%	53.8%	0.0%		100.0%	62.6%
21 Gilchrist	95.1%	100.0%	100.0%		100.0%		95.3%
22 Glades	70.0%	58.6%	51.7%	0.0%		100.0%	61.0%
23 Gulf	87.3%	95.7%	100.0%		100.0%	100.0%	88.8%
24 Hamilton	67.7%	39.7%	33.3%	75.0%		100.0%	53.6%
25 Hardee	75.4%	55.0%	60.7%	20.0%	100.0%		66.0%
26 Hendry	78.3%	70.7%	64.4%	80.0%	100.0%	91.7%	71.4%
27 Hernando	76.1%	71.3%	72.4%	83.3%	57.1%	78.9%	75.4%
28 Highlands	78.2%	68.7%	62.0%	90.0%	60.0%	85.7%	73.2%
29 Hillsborough	88.5%	71.5%	78.5%	93.4%	82.1%	87.5%	82.4%
30 Holmes	86.3%	57.1%	0.0%		100.0%	100.0%	85.2%
31 Indian River	88.7%	70.8%	72.2%	88.2%	66.7%	77.3%	83.8%
32 Jackson	83.4%	69.9%	100.0%	100.0%		62.5%	79.7%
33 Jefferson	12.5%	59.0%	50.0%			100.0%	50.0%
34 Lafayette	81.0%	80.0%	60.0%	100.0%		100.0%	78.1%
35 Lake	82.3%	67.3%	68.8%	90.9%	60.0%	73.7%	77.9%
36 Lee	82.8%	58.2%	69.2%	81.8%	76.0%	73.8%	75.6%
37 Leon	87.9%	62.0%	77.2%	93.4%	100.0%	87.2%	77.8%
38 Levy	68.9%	64.7%	38.5%	71.4%	100.0%	33.3%	66.3%
39 Liberty	88.6%	66.7%	75.0%	100.0%		100.0%	86.0%
40 Madison	86.6%	65.4%	50.0%	100.0%	0.0%		75.6%
41 Manatee	81.9%	60.0%	55.3%	93.2%	75.0%	68.5%	74.3%
42 Marion	79.2%	64.3%	70.7%	88.9%	78.6%	78.5%	75.3%
43 Martin	94.9%	77.9%	73.2%	100.0%		91.3%	90.4%
44 Monroe	87.6%	71.9%	76.7%	87.5%	66.7%	94.1%	83.7%
45 Nassau	83.5%	74.4%	69.6%	83.3%	75.0%	60.0%	82.0%
46 Okaloosa	90.7%	85.5%	84.9%	89.5%	90.0%	93.8%	90.0%
47 Okeechobee	72.0%	59.4%	58.3%	85.7%	36.4%	50.0%	66.2%
48 Orange	83.0%	64.0%	73.3%	90.4%	88.9%	83.0%	75.3%
49 Osceola	82.0%	72.9%	71.0%	86.8%	60.0%	78.9%	75.6%
50 Palm Beach	88.7%	62.3%	74.8%	89.8%	82.5%	90.2%	78.0%
51 Pasco	80.5%	73.5%	76.7%	86.2%	100.0%	83.1%	79.8%
52 Pinellas	84.7%	58.6%	65.8%	86.0%	72.7%	72.6%	78.3%
53 Polk	76.3%	60.7%	59.8%	87.3%	87.5%	71.1%	70.0%
54 Putnam	75.9%	56.3%	65.4%	85.7%		81.8%	69.9%
55 St. Johns	90.6%	71.5%	89.5%	94.1%	100.0%	87.1%	89.1%
56 St. Lucie	86.8%	71.6%	75.4%	91.1%	71.4%	79.7%	79.5%
57 Santa Rosa	85.8%	80.8%	82.3%	91.9%	66.7%	86.7%	85.4%
58 Sarasota	87.8%	63.2%	62.1%	80.8%	83.3%	92.4%	82.7%
59 Seminole	95.1%	80.7%	87.3%	94.8%	80.0%	95.0%	92.0%
60 Sumter	82.7%	73.0%	78.0%	100.0%	0.0%	100.0%	80.3%
61 Suwannee	73.3%	47.6%	58.8%	80.0%	0.0%	100.0%	69.7%
62 Taylor	70.3%	70.3%	66.7%	100.0%	100.0%		70.6%
63 Union	80.2%	66.7%	0.0%			0.0%	76.3%
64 Volusia	81.9%	61.5%	65.3%	84.5%	69.2%	77.8%	76.7%
65 Wakulla	82.3%	58.5%	100.0%			100.0%	79.3%
66 Walton	82.9%	54.5%	70.6%	83.3%	100.0%	100.0%	80.5%
67 Washington	83.6%	79.4%	66.7%	100.0%	100.0%	100.0%	83.3%
68 Deaf/Blind	77.3%	27.3%	35.7%	33.3%	0.0%	0.0%	54.1%
69 Dozier/Okee	62.5%	58.6%	50.0%				60.0%
72 FAU	100.0%	100.0%	100.0%	100.0%		100.0%	100.0%
73 FSU	97.4%	100.0%	100.0%		100.0%	100.0%	98.5%
74 FAMU		93.3%				100.0%	93.5%
75 UF	94.2%	100.0%	100.0%			66.7%	95.6%
FLORIDA	83.8%	63.3%	71.6%	88.1%	77.4%	82.3%	76.2%

*Source: 2008-09 Florida Department of Education (FL DOE) cohort graduation data as of 9/25/09.

Table 14: Florida Graduation Rates by Race, 2008-09

District	White, Non-Hispanic	Black, Non-Hispanic	Hispanic	Asian/Pacific Islander	American Indian/Alaskan Native	Multiracial	Total
01 Alachua	74.1%	57.1%	56.1%	75.3%	0.0%	66.7%	66.7%
02 Baker	89.8%	71.1%	100.0%		100.0%	100.0%	87.5%
03 Bay	81.2%	72.0%	63.8%	93.5%	50.0%	78.8%	79.4%
04 Bradford	78.9%	76.8%	83.3%	100.0%	100.0%	33.3%	78.4%
05 Brevard	96.2%	91.1%	91.9%	98.5%	100.0%	95.1%	95.3%
06 Broward	82.8%	64.3%	76.6%	88.5%	80.8%	80.2%	74.2%
07 Calhoun	92.9%	90.0%	100.0%	100.0%	100.0%	66.7%	92.2%
08 Charlotte	85.5%	78.5%	73.4%	88.9%	100.0%	84.2%	84.3%
09 Citrus	85.8%	62.1%	80.0%	95.7%	60.0%	95.5%	84.6%
10 Clay	84.3%	71.0%	79.8%	76.5%	66.7%	74.4%	81.7%
11 Collier	88.1%	70.3%	68.0%	86.2%	75.0%	78.9%	78.7%
12 Columbia	90.7%	77.6%	92.6%	100.0%	66.7%	81.8%	87.8%
13 Dade	78.6%	60.1%	70.7%	83.6%	75.0%	80.7%	68.9%
14 DeSoto	74.0%	72.1%	68.1%	75.0%			72.0%
15 Dixie	73.3%	78.6%	100.0%				74.0%
16 Duval	76.6%	62.0%	62.5%	85.0%	63.6%	78.1%	69.6%
17 Escambia	84.7%	64.9%	84.7%	94.6%	95.0%	77.8%	77.8%
18 Flagler	84.8%	63.9%	82.5%	89.5%	100.0%	68.0%	81.3%
19 Franklin	87.9%	80.0%					86.0%
20 Gadsden	35.0%	67.3%	53.8%	0.0%		100.0%	64.2%
21 Gilchrist	96.3%	100.0%	100.0%		100.0%		96.5%
22 Glades	70.0%	62.1%	55.2%	0.0%		100.0%	63.0%
23 Gulf	88.1%	95.7%	100.0%		100.0%	100.0%	89.5%
24 Hamilton	69.4%	49.2%	33.3%	75.0%		100.0%	58.6%
25 Hardee	81.0%	60.0%	67.5%	40.0%	100.0%		72.6%
26 Hendry	81.8%	80.5%	69.7%	80.0%	100.0%	91.7%	76.5%
27 Hernando	79.2%	73.0%	75.9%	83.3%	57.1%	82.1%	78.5%
28 Highlands	81.5%	72.1%	64.5%	100.0%	60.0%	85.7%	76.3%
29 Hillsborough	90.0%	75.4%	80.7%	94.4%	85.4%	88.9%	84.6%
30 Holmes	88.5%	57.1%	0.0%		100.0%	100.0%	87.3%
31 Indian River	90.4%	75.8%	75.8%	88.2%	66.7%	78.3%	86.1%
32 Jackson	87.4%	78.7%	100.0%	100.0%		62.5%	85.0%
33 Jefferson	48.1%	68.8%	50.0%			100.0%	62.8%
34 Lafayette	81.0%	90.0%	60.0%	100.0%		100.0%	79.7%
35 Lake	84.8%	73.3%	70.5%	90.9%	63.6%	76.3%	80.8%
36 Lee	84.7%	63.9%	71.9%	82.4%	76.9%	74.5%	78.3%
37 Leon	89.7%	66.9%	83.3%	93.5%	100.0%	89.4%	81.0%
38 Levy	69.8%	70.6%	38.5%	71.4%	100.0%	33.3%	67.9%
39 Liberty	96.2%	77.8%	75.0%	100.0%	100.0%	100.0%	93.8%
40 Madison	88.4%	73.8%	50.0%	100.0%	0.0%		80.4%
41 Manatee	86.2%	65.9%	63.5%	93.2%	75.0%	74.5%	79.4%
42 Marion	82.5%	69.0%	74.5%	90.7%	78.6%	79.7%	78.9%
43 Martin	97.0%	85.0%	81.9%	100.0%		95.7%	93.9%
44 Monroe	90.9%	79.3%	80.3%	87.5%	66.7%	94.1%	87.4%
45 Nassau	86.0%	77.2%	80.8%	83.3%	75.0%	66.7%	84.8%
46 Okaloosa	92.2%	88.6%	87.2%	91.2%	90.0%	94.8%	91.7%
47 Okeechobee	74.5%	63.6%	61.4%	100.0%	45.5%	50.0%	69.3%
48 Orange	84.5%	66.4%	75.9%	90.6%	88.9%	84.2%	77.4%
49 Osceola	85.7%	75.5%	75.2%	87.9%	60.0%	78.9%	79.2%
50 Palm Beach	90.1%	65.6%	77.2%	90.4%	82.8%	91.3%	80.1%
51 Pasco	84.3%	77.5%	80.6%	86.5%	100.0%	85.2%	83.5%
52 Pinellas	86.2%	63.4%	67.8%	86.7%	72.7%	74.8%	80.6%
53 Polk	80.4%	66.7%	64.2%	89.2%	88.2%	73.6%	74.7%
54 Putnam	81.6%	71.9%	73.4%	85.7%		83.3%	78.4%
55 St. Johns	91.6%	81.0%	91.6%	94.1%	100.0%	87.1%	90.8%
56 St. Lucie	87.9%	74.0%	76.5%	91.1%	85.7%	84.1%	81.1%
57 Santa Rosa	89.4%	87.5%	85.5%	94.6%	66.7%	86.7%	89.0%
58 Sarasota	89.4%	69.1%	66.6%	82.7%	83.3%	93.8%	85.1%
59 Seminole	96.0%	82.8%	88.6%	96.0%	80.0%	95.6%	93.0%
60 Sumter	86.6%	82.2%	80.4%	100.0%	0.0%	100.0%	85.0%
61 Suwannee	75.4%	53.5%	64.7%	80.0%	0.0%	100.0%	72.4%
62 Taylor	74.7%	75.4%	66.7%	100.0%	100.0%		75.1%
63 Union	84.7%	71.4%	0.0%			0.0%	80.7%
64 Volusia	86.6%	67.9%	71.6%	85.9%	88.2%	78.9%	82.0%
65 Wakulla	86.6%	64.3%	100.0%			100.0%	84.0%
66 Walton	84.7%	54.5%	76.5%	83.3%	100.0%	100.0%	82.3%
67 Washington	85.2%	82.9%	66.7%	100.0%	100.0%	100.0%	85.0%
68 Deaf/Blind	93.2%	86.4%	100.0%	100.0%	0.0%	100.0%	91.8%
69 Dozier/Okee	77.8%	68.4%	66.7%				72.7%
72 FAU	100.0%	100.0%	100.0%	100.0%		100.0%	100.0%
73 FSU	97.4%	100.0%	100.0%		100.0%	100.0%	98.5%
74 FAMU		93.3%				100.0%	93.5%
75 UF	94.2%	100.0%	100.0%			66.7%	95.6%
FLORIDA	86.0%	66.7%	73.5%	88.9%	79.7%	83.7%	78.6%

*Source: 2008-09 Florida Department of Education (FL DOE) cohort graduation data as of 9/25/09.

Table 15: Dropout Rates by Race, 2008-09

District	White, Non-Hispanic	Black, Non-Hispanic	Hispanic	Asian/Pacific Islander	American Indian/Alaskan Native	Multiracial	Total
01 Alachua	1.8%	3.9%	1.4%	0.9%	9.1%	1.6%	2.6%
02 Baker	1.8%	3.0%	4.5%	0.0%	0.0%	5.9%	2.0%
03 Bay	0.7%	0.9%	1.2%	1.2%	3.0%	0.5%	0.8%
04 Bradford	2.9%	3.9%	2.8%	0.0%	0.0%	0.0%	3.1%
05 Brevard	0.5%	0.8%	0.9%	0.2%	0.0%	0.3%	0.6%
06 Broward	1.3%	2.9%	1.6%	0.6%	3.0%	2.2%	2.1%
07 Calhoun	0.6%	1.0%	0.0%	0.0%	0.0%	0.0%	0.6%
08 Charlotte	2.9%	2.0%	4.4%	0.0%	0.0%	3.3%	2.8%
09 Citrus	1.5%	0.6%	1.1%	1.1%	5.7%	0.6%	1.4%
10 Clay	1.1%	1.7%	0.8%	0.9%	0.0%	1.0%	1.2%
11 Collier	1.6%	1.6%	3.1%	1.8%	2.4%	1.3%	2.2%
12 Columbia	0.7%	1.1%	0.0%	0.0%	0.0%	0.0%	0.7%
13 Dade	2.4%	5.3%	3.5%	1.7%	2.8%	2.4%	3.9%
14 DeSoto	4.8%	4.0%	4.5%	0.0%	0.0%	13.3%	4.6%
15 Dixie	5.2%	3.6%	0.0%		100.0%	0.0%	5.1%
16 Duval	3.9%	5.9%	4.3%	1.8%	9.2%	3.5%	4.8%
17 Escambia	1.2%	3.6%	1.5%	0.2%	1.6%	1.4%	2.1%
18 Flagler	1.9%	3.4%	2.7%	0.0%	0.0%	2.0%	2.2%
19 Franklin	5.8%	4.9%	0.0%			0.0%	5.4%
20 Gadsden	1.4%	4.5%	2.9%	0.0%	0.0%	0.0%	4.2%
21 Gilchrist	0.1%	0.0%	3.0%		0.0%	0.0%	0.2%
22 Glades	2.5%	3.3%	6.1%	0.0%	0.0%	0.0%	3.8%
23 Gulf	1.5%	0.0%	0.0%	0.0%	0.0%	11.1%	1.4%
24 Hamilton	2.7%	3.8%	8.2%	0.0%		0.0%	3.6%
25 Hardee	3.6%	3.2%	6.5%	4.3%	0.0%	0.0%	4.9%
26 Hendry	3.1%	1.2%	3.8%	7.7%	0.0%	4.3%	3.1%
27 Hernando	2.7%	2.5%	3.2%	3.2%	0.0%	1.6%	2.7%
28 Highlands	3.4%	4.9%	5.3%	2.2%	5.3%	5.1%	4.2%
29 Hillsborough	0.7%	1.3%	1.2%	0.3%	0.9%	0.8%	1.0%
30 Holmes	1.7%	0.0%	0.0%	0.0%	0.0%	14.3%	1.7%
31 Indian River	1.1%	2.6%	1.9%	2.2%	0.0%	2.7%	1.5%
32 Jackson	1.4%	3.0%	3.3%	0.0%	8.3%	2.1%	2.0%
33 Jefferson	7.3%	0.8%	0.0%	0.0%	0.0%	0.0%	1.8%
34 Lafayette	0.9%	0.0%	0.0%	0.0%		0.0%	0.7%
35 Lake	2.6%	3.3%	3.7%	1.5%	1.4%	5.0%	2.9%
36 Lee	1.2%	1.8%	1.3%	0.7%	2.0%	1.0%	1.3%
37 Leon	1.6%	4.9%	1.2%	1.1%	4.3%	2.4%	3.0%
38 Levy	4.3%	3.4%	5.8%	0.0%	0.0%	3.3%	4.2%
39 Liberty	1.6%	0.7%	0.0%	0.0%	0.0%	0.0%	1.3%
40 Madison	1.5%	3.2%	0.0%	0.0%		0.0%	2.4%
41 Manatee	2.3%	5.1%	6.6%	1.3%	0.0%	2.6%	3.6%
42 Marion	2.4%	3.5%	2.5%	0.8%	0.0%	2.5%	2.6%
43 Martin	0.4%	0.8%	2.1%	0.0%	0.0%	0.6%	0.7%
44 Monroe	0.6%	0.9%	0.7%	0.0%	0.0%	0.0%	0.6%
45 Nassau	1.9%	4.0%	0.0%	0.0%	0.0%	2.1%	2.1%
46 Okaloosa	1.0%	1.1%	1.5%	0.4%	0.0%	0.5%	1.0%
47 Okeechobee	3.4%	3.4%	4.4%	0.0%	12.1%	12.5%	3.9%
48 Orange	0.8%	1.6%	1.0%	0.2%	0.5%	0.6%	1.1%
49 Osceola	1.3%	1.3%	0.8%	1.0%	0.0%	0.7%	1.0%
50 Palm Beach	1.4%	4.2%	2.5%	0.9%	3.1%	2.2%	2.6%
51 Pasco	1.2%	0.8%	1.2%	0.7%	0.0%	0.7%	1.2%
52 Pinellas	1.6%	3.7%	2.7%	1.4%	4.1%	1.9%	2.1%
53 Polk	3.6%	4.5%	4.8%	1.1%	1.5%	3.0%	4.0%
54 Putnam	2.9%	4.2%	3.5%	0.0%	0.0%	3.6%	3.3%
55 St. Johns	1.0%	1.0%	2.7%	0.5%	0.0%	1.2%	1.1%
56 St. Lucie	1.1%	1.8%	1.6%	0.4%	3.3%	1.0%	1.4%
57 Santa Rosa	1.9%	1.8%	2.2%	1.9%	1.4%	0.8%	1.8%
58 Sarasota	1.4%	3.3%	2.9%	2.2%	0.0%	3.0%	1.8%
59 Seminole	0.2%	0.8%	0.6%	0.0%	0.0%	0.3%	0.4%
60 Sumter	3.1%	4.9%	1.8%	0.0%	20.0%	0.0%	3.3%
61 Suwannee	3.0%	5.3%	3.7%	0.0%	20.0%	0.0%	3.4%
62 Taylor	3.3%	1.3%	7.7%	0.0%	0.0%	20.0%	2.8%
63 Union	0.7%	2.4%	0.0%	0.0%		0.0%	1.0%
64 Volusia	1.2%	1.4%	2.2%	0.3%	0.0%	0.8%	1.3%
65 Wakulla	2.9%	2.5%	0.0%	0.0%	14.3%	5.3%	2.9%
66 Walton	2.7%	3.0%	0.0%	0.0%	0.0%	0.0%	2.6%
67 Washington	1.3%	0.5%	4.3%	0.0%	0.0%	0.0%	1.2%
68 Deaf/Blind	0.0%	0.0%	0.0%	0.0%	0.0%	0.0%	0.0%
69 Dozier/Okee	1.2%	1.5%	0.0%	0.0%			1.4%
72 FAU	0.0%	0.0%	0.0%	0.0%		0.0%	0.0%
73 FSU	0.0%	0.0%	0.0%	0.0%	0.0%	0.0%	0.0%
74 FAMU		0.0%				0.0%	0.0%
75 UF	0.4%	0.0%	0.0%	0.0%		0.0%	0.2%
FLORIDA	1.6%	3.4%	2.5%	0.8%	2.3%	1.6%	2.3%

*Source: 2008-09 Florida Department of Education (FL DOE) cohort graduation data as of 11/03/09.

Table 16: Dropout Rates by District, 2004-05 through 2008-09

	District	2004-05	2005-06	2006-07	2007-08	2008-09
01	Alachua	5.0%	6.1%	6.6%	3.6%	2.6%
02	Baker	4.3%	3.7%	2.8%	1.8%	2.0%
03	Bay	1.2%	2.0%	2.5%	1.7%	0.8%
04	Bradford	4.5%	5.4%	5.1%	5.0%	3.1%
05	Brevard	1.2%	0.8%	0.9%	0.7%	0.6%
06	Broward	1.7%	2.7%	3.2%	2.0%	2.1%
07	Calhoun	1.4%	3.0%	3.2%	1.5%	0.6%
08	Charlotte	2.2%	2.5%	1.6%	1.5%	2.8%
09	Citrus	4.4%	4.7%	4.1%	1.7%	1.4%
10	Clay	1.9%	1.9%	2.3%	2.0%	1.2%
11	Collier	2.2%	2.0%	2.7%	2.5%	2.2%
12	Columbia	2.1%	2.1%	2.3%	0.6%	0.7%
13	Dade	4.5%	6.7%	5.8%	4.5%	3.9%
14	DeSoto	5.6%	6.1%	4.2%	3.4%	4.6%
15	Dixie	2.8%	5.6%	4.4%	4.3%	5.1%
16	Duval	5.9%	6.6%	5.2%	3.3%	4.8%
17	Escambia	3.4%	3.1%	3.3%	4.0%	2.1%
18	Flagler	1.4%	1.9%	2.5%	1.0%	2.2%
19	Franklin	4.6%	13.3%	6.7%	2.0%	5.4%
20	Gadsden	6.0%	4.9%	5.4%	1.1%	4.2%
21	Gilchrist	2.1%	2.3%	1.4%	0.7%	0.2%
22	Glades	8.2%	6.9%	13.0%	5.0%	3.8%
23	Gulf	2.2%	2.9%	0.9%	1.3%	1.4%
24	Hamilton	4.9%	5.4%	5.1%	4.4%	3.6%
25	Hardee	6.3%	5.7%	5.1%	6.4%	4.9%
26	Hendry	3.6%	4.2%	3.0%	4.0%	3.1%
27	Hernando	3.1%	4.9%	3.3%	2.8%	2.7%
28	Highlands	5.0%	5.7%	5.4%	4.2%	4.2%
29	Hillsborough	2.1%	2.1%	1.6%	1.8%	1.0%
30	Holmes	2.3%	3.8%	3.4%	2.4%	1.7%
31	Indian River	1.4%	1.0%	1.8%	1.3%	1.5%
32	Jackson	2.8%	1.2%	1.6%	1.4%	2.0%
33	Jefferson	8.0%	7.7%	7.9%	5.3%	1.8%
34	Lafayette	2.6%	2.8%	2.3%	2.8%	0.7%
35	Lake	4.5%	4.7%	4.5%	3.1%	2.9%
36	Lee	2.9%	3.5%	2.4%	1.8%	1.3%
37	Leon	1.9%	2.3%	3.6%	2.1%	3.0%
38	Levy	5.0%	4.8%	4.2%	2.9%	4.2%
39	Liberty	0.2%	0.9%	0.4%	0.0%	1.3%
40	Madison	7.8%	5.5%	5.5%	5.1%	2.4%
41	Manatee	2.5%	3.1%	1.3%	4.4%	3.6%
42	Marion	3.6%	4.2%	3.3%	3.1%	2.6%
43	Martin	1.3%	0.4%	0.6%	0.5%	0.7%
44	Monroe	4.0%	1.5%	1.2%	0.6%	0.6%
45	Nassau	3.1%	3.4%	4.2%	3.5%	2.1%
46	Okaloosa	2.5%	2.2%	1.8%	1.7%	1.0%
47	Okeechobee	7.2%	6.0%	5.3%	5.2%	3.9%
48	Orange	2.0%	1.9%	1.7%	1.5%	1.1%
49	Osceola	4.1%	4.1%	4.2%	2.7%	1.0%
50	Palm Beach	2.8%	3.0%	4.4%	3.9%	2.6%
51	Pasco	4.2%	4.2%	3.5%	2.1%	1.2%
52	Pinellas	2.7%	3.0%	3.4%	2.1%	2.1%
53	Polk	4.8%	4.4%	4.2%	3.8%	4.0%
54	Putnam	4.2%	4.0%	2.9%	5.7%	3.3%
55	St. Johns	1.7%	2.0%	1.8%	1.3%	1.1%
56	St. Lucie	2.3%	2.2%	2.0%	1.3%	1.4%
57	Santa Rosa	1.8%	2.3%	1.9%	1.9%	1.8%
58	Sarasota	2.9%	2.5%	2.7%	2.1%	1.8%
59	Seminole	1.3%	1.2%	1.5%	0.5%	0.4%
60	Sumter	3.1%	2.6%	2.7%	1.8%	3.3%
61	Suwannee	5.2%	4.8%	5.2%	6.8%	3.4%
62	Taylor	3.2%	3.5%	4.7%	4.0%	2.8%
63	Union	2.1%	2.6%	1.8%	1.2%	1.0%
64	Volusia	1.1%	1.4%	1.3%	1.0%	1.3%
65	Wakulla	2.7%	5.7%	2.7%	2.7%	2.9%
66	Walton	2.8%	2.6%	2.3%	1.8%	2.6%
67	Washington	2.4%	3.4%	1.6%	1.7%	1.2%
68	Deaf/Blind	0.0%	0.3%	0.0%	0.0%	0.0%
69	Dozier/Okee	4.0%	4.0%	2.9%	1.3%	1.4%
72	FAU	0.0%	0.0%	0.0%	0.0%	0.0%
73	FSU	0.8%	0.2%	0.0%	0.0%	0.0%
74	FAMU	3.7%	0.0%	0.0%	0.0%	0.0%
75	UF	0.2%	0.2%	0.2%	0.0%	0.2%
	FLORIDA	3.0%	3.5%	3.3%	2.6%	2.3%

*Source: 2008-09 Florida Department of Education (FL DOE) cohort graduation data as of 11/03/09.

Table 17: Diploma Types by District for the 2008-09 Cohort

District	W06	W07	W10	W27	W43	W45	W52	W6A	W6B	WFA	WFB	WFT	WFW	WGA	WGD
01 Alachua	1,350	56	2	5	0	10	0	0	0	0	1	77	35	0	0
02 Baker	217	10	7	3	0	0	0	0	0	0	0	41	8	0	0
03 Bay	1,335	14	24	3	10	50	0	2	0	0	0	58	26	1	7
04 Bradford	154	12	8	4	0	4	0	0	0	0	0	17	4	1	7
05 Brevard	4,433	98	13	7	128	204	6	0	0	0	0	156	56	1	6
06 Broward	12,911	192	41	14	0	0	0	8	0	0	0	1,551	148	4	2
07 Calhoun	110	9	0	0	4	11	0	0	0	0	0	6	2	0	0
08 Charlotte	1,082	23	112	5	0	1	0	1	0	1	0	74	51	0	5
09 Citrus	893	28	23	0	34	47	2	0	0	0	0	15	24	0	3
10 Clay	2,206	53	75	1	4	26	0	2	0	0	1	66	31	1	121
11 Collier	2,089	93	19	19	0	77	0	0	0	0	1	145	28	0	12
12 Columbia	412	31	29	9	0	55	1	1	0	0	0	44	9	0	0
13 Dade	16,220	168	9	0	0	0	0	2	1	0	0	1,485	628	0	94
14 DeSoto	194	9	17	0	0	3	0	0	0	0	0	0	8	0	6
15 Dixie	95	2	0	0	0	0	0	0	0	0	0	12	2	0	0
16 Duval	4,551	186	333	52	0	33	0	1	0	0	0	517	55	0	77
17 Escambia	1,839	95	1	19	43	65	1	1	0	0	0	98	21	0	8
18 Flagler	710	35	0	3	0	0	0	0	0	0	0	0	0	0	0
19 Franklin	62	0	0	3	0	0	0	0	0	0	0	1	1	0	7
20 Gadsden	156	5	11	0	0	3	0	0	0	0	0	63	8	0	3
21 Gilchrist	145	2	2	0	0	0	0	2	0	0	0	6	7	0	1
22 Glades	46	2	2	0	0	0	0	0	0	0	0	12	0	0	1
23 Gulf	131	0	0	1	4	1	0	0	0	0	0	9	7	0	0
24 Hamilton	55	7	0	0	0	0	0	0	0	0	0	18	2	0	0
25 Hardee	165	18	0	0	0	8	0	0	0	0	0	33	4	0	0
26 Hendry	317	20	13	4	0	13	0	0	0	0	0	37	13	0	0
27 Hernando	1,090	31	39	8	0	52	0	1	0	0	0	97	20	0	0
28 Highlands	549	22	22	2	0	11	0	1	0	0	0	29	11	0	1
29 Hillsborough	9,160	216	173	0	33	394	1	3	6	0	2	480	145	17	50
30 Holmes	183	5	2	0	0	0	0	0	0	0	0	4	4	1	14
31 Indian River	927	25	38	0	0	36	0	0	0	0	0	61	18	2	6
32 Jackson	317	12	9	8	4	33	0	0	0	0	0	27	14	0	6
33 Jefferson	32	5	0	0	0	14	0	0	0	0	0	3	3	0	2
34 Lafayette	43	1	0	0	0	0	0	0	0	0	0	2	5	0	0
35 Lake	2,016	66	80	0	0	86	0	3	0	0	0	51	35	0	11
36 Lee	3,627	97	2	19	0	123	0	2	1	0	0	275	70	0	8
37 Leon	1,538	41	106	11	0	112	0	0	0	0	0	98	15	9	17
38 Levy	244	7	4	0	0	0	0	0	0	0	0	26	5	0	0
39 Liberty	55	6	6	0	1	10	0	0	0	0	0	0	2	0	10
40 Madison	119	7	0	4	0	0	0	0	0	0	0	31	4	0	16
41 Manatee	1,847	109	120	25	0	77	0	0	0	0	0	151	39	0	8
42 Marion	1,998	72	124	31	0	25	0	1	1	0	0	99	34	3	23
43 Martin	1,119	39	13	5	17	37	0	2	0	0	0	23	19	1	6
44 Monroe	433	15	26	3	0	30	0	0	0	2	0	24	2	1	4
45 Nassau	617	16	54	1	0	54	0	5	2	5	0	13	19	0	14
46 Okaloosa	1,825	33	25	3	0	1	0	1	0	1	0	30	18	0	40
47 Okeechobee	261	13	15	0	0	4	0	0	0	0	0	12	5	0	6
48 Orange	8,324	199	159	40	2	32	0	1	0	0	0	531	178	0	12
49 Osceola	2,494	124	25	7	0	11	0	0	0	0	0	193	72	0	2
50 Palm Beach	8,326	214	246	40	0	80	0	2	2	0	0	987	163	13	30
51 Pasco	2,955	92	92	22	2	274	0	2	2	0	0	184	90	3	105
52 Pinellas	5,771	128	134	1	2	272	0	1	0	3	0	245	128	5	80
53 Polk	3,734	237	67	2	10	241	1	6	1	0	0	473	147	2	67
54 Putnam	442	23	42	41	35	27	0	0	0	0	0	28	12	10	8
55 St. Johns	1,733	30	10	5	0	0	0	1	0	0	0	13	12	0	21
56 St. Lucie	1,746	37	1	2	0	0	0	0	0	0	0	137	31	0	2
57 Santa Rosa	1,399	58	6	4	2	31	2	3	0	0	0	125	4	0	8
58 Sarasota	2,230	57	112	0	1	90	0	2	1	0	0	27	48	0	9
59 Seminole	3,921	37	28	13	0	0	0	0	0	0	0	163	62	1	18
60 Sumter	357	21	1	0	0	23	0	0	0	0	0	32	16	4	1
61 Suwannee	217	5	29	3	0	7	0	0	0	0	0	2	3	0	9
62 Taylor	133	4	0	1	0	19	0	0	0	0	0	16	5	0	0
63 Union	97	6	0	0	0	0	0	1	0	0	0	0	5	0	0
64 Volusia	3,054	131	6	36	0	346	0	0	1	0	2	142	97	0	0
65 Wakulla	205	8	5	0	0	36	0	0	0	0	0	11	12	0	1
66 Walton	329	8	7	0	7	0	0	3	0	0	1	8	3	1	5
67 Washington	198	4	0	0	0	2	0	1	0	0	0	2	2	0	1
68 Deaf/Blind	30	32	0	0	0	0	0	0	0	0	0	5	11	0	0
69 Dozier/Okee	4	1	15	0	0	22	0	0	0	0	0	0	0	0	14
72 FAU	18	0	0	0	0	0	0	0	0	0	0	0	0	0	0
73 FSU	126	0	1	0	0	0	0	0	0	0	0	6	0	0	0
74 FAMU	29	0	0	0	0	0	0	0	0	0	0	0	0	0	0
75 UF	105	0	0	0	0	0	0	0	0	0	0	3	1	0	0
FLORIDA	127,855	3,462	2,585	489	343	3,223	14	62	18	12	8	9,410	2,767	81	995

*Source: 2008-09 Florida Department of Education (FL DOE) cohort graduation data as of 11/03/09.

**Appendix A: Withdrawal Codes/Diploma Types Crosswalk Source:
Automated Student Database Manual**

Withdrawal Code/Diploma Type and Definition	NGA Rate	NCLB Graduation Rate	Florida's Graduation Rate
DNE - Any PK-12 student who was expected to attend a school but did not enter as expected for unknown reasons.	dropout	dropout	dropout
W01 - Any PK-12 student promoted, retained or transferred to another attendance reporting unit in the same school.	N/A	N/A	N/A
W02 - Any PK-12 student promoted, retained or transferred to another school in the same district.	transferred out of cohort	transferred out of cohort	transferred out of cohort
W3A - Any PK-12 student who withdraws to attend a public school in another district in Florida.	transferred out of cohort	transferred out of cohort	transferred out of cohort
W3B – Any PK-12 student who withdraws to attend another public school out-of-state.	transferred out of cohort	transferred out of cohort	transferred out of cohort
W04 - Any PK-12 student who withdraws to attend a nonpublic school in- or out-of-state.	transferred out of cohort	transferred out of cohort	transferred out of cohort
W05 - Any student age 16 or older who leaves school voluntarily with no intention of returning.	dropout	dropout	dropout
W06 - Any student who graduated from school and met all of the requirements to receive a standard diploma	graduate	graduate	graduate
W6A - Any student who graduated from school and met all of the requirements to receive a standard diploma, based on the 18-credit college preparatory graduation option	graduate	graduate	graduate
W6B - Any student who graduated from school and met all of the requirements to receive a standard diploma, based on the 18-credit career preparatory graduation option	graduate	graduate	graduate
W07 - Any student who graduated from school with a special diploma based on option one--mastery of Sunshine State Standards for Special Diploma	graduate	non-graduate	graduate
W08 - Any student who received a certificate of completion	non-graduate	non-graduate	non-graduate
W8A - Any student who met all of the requirements to receive a standard diploma except passing the graduation test and received a certificate of completion and is eligible to take the College Placement Test and be admitted to remedial or credit courses at a state community college as appropriate	non-graduate	non-graduate	non-graduate
W09 - Any student who received a special certificate of completion	non-graduate	non-graduate	non-graduate
W10 – Any student in a GED Exit Option Model who passed the GED Tests and the graduation test and was awarded a standard diploma	non-graduate	graduate	graduate
W12 - Any PK-12 student withdrawn from school due to death.	transferred out of cohort	transferred out of cohort	transferred out of cohort
W13 - Any PK-12 student withdrawn from school due to court action.	dropout	dropout	dropout
W15 - Any PK-12 student who is withdrawn from school due to nonattendance.	dropout	dropout	dropout
W18 - Any PK-12 student who withdraws from school due to medical reasons.	dropout	dropout	dropout
W21 - Any PK-12 student who is withdrawn from school due to being expelled.	dropout	dropout	dropout
W22 - Any PK-12 student whose whereabouts are unknown.	dropout	dropout	dropout
W23 – Any PK-12 student who withdraws from school for any reason other than W01 - W22 or W24 – W27.	dropout	dropout	dropout
W24 - Any PK-12 student who withdraws from school to attend a Home Education program.	transferred out of cohort	transferred out of cohort	transferred out of cohort
W25 - Any student under the age of 6 who withdraws from school.	N/A	N/A	N/A
W26 - Any student who withdraws from school to enter the adult education program prior to completion of graduation requirements.	transferred out of cohort	transferred out of cohort	transferred out of cohort

Withdrawal Code/Diploma Type and Definition	NGA Rate	NCLB Graduation Rate	Florida's Graduation Rate
W27 - Any student who graduated from school with a special diploma based on option two-mastery of employment and community competencies	graduate	non-graduate	graduate
W43 - Any adult student who graduated from school with a standard diploma	graduate	graduate	graduate
W44 - Any adult student who left school with a certificate of completion	non-graduate	non-graduate	non-graduate
W45 - Any adult student who left school with a State of Florida diploma (GED)	No (Students with this code are also removed from the denominator)	No (Students with this code are also removed from the denominator)	graduate
W52 - Any adult student who graduated from school with a standard diploma and satisfied the graduation test requirement through an alternate assessment	graduate	graduate	graduate
WFW – Any student who graduated from school with a standard diploma and an FCAT waiver	graduate	graduate	graduate
WFT - Any student who graduated from school with a standard diploma and satisfied the graduation test requirement through an alternate assessment (For students meeting accelerated high school graduation option requirements, see WFA and WFB.)	graduate	graduate	graduate
WFA – Any student who graduated from school with a standard diploma based on an 18-credit college preparatory graduation option and satisfied the graduation test requirement through an alternate assessment	graduate	graduate	graduate
WFB – Any student who graduated from school with a standard diploma based on an 18-credit career preparatory graduation option and satisfied the graduation test requirement through an alternate assessment	graduate	graduate	graduate
WGA – Any student in a GED Exit Option Model who passed the GED Tests, satisfied the graduation test requirement through an alternate assessment, and was awarded a standard diploma	non-graduate	graduate	graduate
WGD – Any student participating in the GED Exit Option Model who passed the GED Tests but did not pass the graduation test and was awarded a State of Florida diploma	non-graduate	graduate	graduate

Appendix B

Frequently Asked Questions about Florida's Cohort Graduation Rates

What is a cohort?

For graduation purposes, a cohort is a group of students who enter the ninth grade at the same time on the same schedule to graduate four years later.

How is the cohort graduation rate calculated?

The graduation rate is the number of graduates (numerator) divided by the total number of students in the adjusted cohort (denominator).

The denominator (adjusted cohort) is attained by compiling and classifying four years of individual student records to determine which students entered ninth grade for the first time four years prior to the year of the rate calculation; which students transferred into the cohort in ninth grade in year one, tenth grade in year two, eleventh grade in year three, and twelfth grade in year four; and which students from the group transferred out or became deceased.

The numerator is the number of graduates from the adjusted cohort.

Are graduation rates disaggregated by student subgroups?

The NGA, NCLB, and Florida rates are disaggregated by race. The NCLB rate has also been disaggregated by additional subgroups, including gender, disabled, English Language Learners, economically disadvantaged (students eligible for free/reduced-price lunch), and migrant students. Beginning with the 2008-09 cohort, all three rates will be disaggregated by the additional subgroups.

What are the advantages to using a cohort graduation rate method?

The cohort method allows adjustment for students' mobility, thus providing a more accurate picture of the students' progress and outcomes.

How are students appropriately assigned to a cohort?

Students are assigned to a cohort based upon their initial entry into ninth grade. Incoming students are included in the cohort for which they were originally scheduled to graduate. For example, students transferred into the cohort in ninth grade in year one, tenth grade in year two, eleventh grade in year three, and twelfth grade in year four.

How are students appropriately removed from a cohort?

Currently students transferring to another public or private school, a home education program, or an adult education program, in addition to deceased students are removed from the cohort.

Where can I find a complete list of the withdrawal and diploma codes used in Florida?

Appendices A and B in the Database Manuals for the Automated Student Database System, online at <http://www.fldoe.org/eias/dataweb/default.asp>, provide all the withdrawal and diploma codes.

If a dropout re-enrolls in another high school, how is this student counted in the four-year graduation rate?

For graduation rate purposes, a prior dropout should be updated to a transfer if the student is later found enrolled in another school. Keep in mind, the goal of the cohort graduation rate is to determine the final educational outcome for all students during the four-year window.

How are students who are retained handled?

The student remains in the same cohort no matter how many times they are retained.

What happens if a student who was retained in ninth grade in year one of the cohort transfers to another school in year two of the cohort?

This student remains in the original cohort. He does not "start over" in another cohort. The graduation rate is based upon the students' initial entry into ninth grade – it is not based upon their initial entry into ninth grade at a particular school. An accurate graduation rate reflects the final outcome of all students four years after their initial entry into ninth grade. Cohort-based graduation rates are accurate only if each student is assigned to a single cohort. The ED's Non-Regulatory Guidance paper for NCLB addresses this issue:

“If a student who has repeated a grade transfers into a school, the student should be assigned to the cohort in which the student started 9th grade for the first time. This assignment prevents the student from being included in two separate cohorts of 9th graders—the cohort in which the student originally started 9th grade and the cohort in which the student was assigned in the school to which he or she transferred. Unless the student skipped a grade later in high school or caught up with the original cohort in some other manner, that student could not graduate within four years of starting 9th grade.”¹

How are students who graduated early, such as those who graduate with the 18 hour diploma, counted?

Students who graduate early are still counted in the cohort for which they were originally assigned. Remember, when calculating the cohort rate we are looking back four years prior. If a student enters ninth grade in 2005-06 and graduates in 2007-08, this student would not be counted as a graduate until 2008-09.

What about students who take longer than four years to graduate?

Students taking longer than four years to graduate would be considered non-graduates in the four-year cohort graduation rate.

Are summer graduates included in the graduation rate?

Yes, summer graduates are counted if they graduate by the end of the current school year.

If a student gets a certificate of completion at the end of the year but takes a course in summer school to earn the required 2.0 GPA, does he count in the graduation rate if he attains the GPA before June 30?

Yes, if the student is reported with an applicable diploma type on the Student End of Year Status records submitted to the DOE for that school year. If the student is not reported with a diploma on the end-of-year records for that year, the student will not be counted as a graduate.

Does the student who earns a certificate of completion but has not passed the FCAT count as a graduate if he takes the ACT in June and gets the concordant score before June 30?

The student will count if he is awarded a diploma by the district and it is reported with a diploma code on the end-of-year record for the applicable school year.

The DOE will identify graduates for the graduation rate based on the diploma type reported for students on the Student End of Year Status record format. Survey 5 data collected on end-of-year records covers students who were enrolled at any time during the 180-day school year, as well as during the school year's associated summer session, as reported by the districts. A student who is not reported with a diploma type on end-of-year records would not be counted as a graduate. A student's status is determined by the most recently reported withdrawal code, certificate type, or diploma type on the end-of-year records.

Does a student who leaves a regular high school and transfers to an adult high school and earns an adult diploma count in the graduation rate?

A student would not count as a graduate in the graduation rate for the regular high school if his/her most recently reported end-of-year data indicated that he/she transferred out of the regular high school as a withdrawal to attend adult education (database code W26). Students who are reported as having received a regular high school diploma through an adult program (database code W43, or W52) are counted as graduates.

Why does Florida calculate more than one graduation rate?

Florida currently calculates three graduation rates: Florida's NGA rate, detailed above, was mandated by the Florida Legislature in 2006 to meet an agreement with the National Governor's Association Compact and was first implemented using the data for 2004-05 and reported in the 2005-06 NCLB School Public Accountability Reports (SPARs); a rate for No Child Left Behind (NCLB) reporting purposes, implemented in 2001; and Florida's regular rate that has been calculated consistently since 1998-99.

All three versions use the cohort method of tracking individual students in and out of the system from their entrance into the ninth grade through completion four years later. However, each rate defines a graduate differently. The differences between the NGA rate, the NCLB rate, and the regular graduation rate are as follows:

- The NGA graduation rate includes standard and special diplomas but excludes all GEDs.

¹ NCLB High School Graduation Rate, Non-Regulatory Guidance, December 2008.

- The NCLB graduation rate includes standard diplomas and GEDs awarded to high school students but excludes the special diplomas and the GEDs awarded to adult students.
- Florida's regular rate includes all diploma recipients. This includes standard and special diplomas and all GEDs.

Which graduation rate will be used in the school grades calculation?

For years 2009-10 and 2010-11, the department will use the National Governors Association (NGA) graduation rate in the high school grading formula. If federal requirements for the uniform rate change in the interim, Florida's federal uniform rate will be adjusted accordingly. The Bureau of Evaluation and Reporting should be contacted for more specific information at evalnrpt@fldoe.org.

Is the NGA rate the same as the federal uniform graduation rate?

No. The NGA graduation rate counts standard and special diplomas as graduates, whereas the federal graduation rate counts only standard diplomas. Both calculations count GEDs as non-graduates.

Why was the NGA rate selected for school grades purposes?

The NGA rate more closely resembles the federal uniform graduation rate in that neither calculation counts GEDs as graduates.

What is the "federal uniform graduation rate"?

As defined in 34 C.F.R. §200.19(b)(1)(i)-(iv), "the four-year adjusted cohort graduation rate (hereafter referred to as "the four-year graduation rate") is the number of students who graduate in four years with a regular high school diploma divided by the number of students who form the adjusted cohort for the graduating class. From the beginning of 9th grade, students who are entering that grade for the first time form a cohort that is subsequently "adjusted" by adding any students who transfer into the cohort later during the 9th grade and the next three years and subtracting any students who transfer out, emigrate to another country, or die during that same period. "

Only standard diplomas are counted as graduates, and transfers can only be removed from the cohort if the student transfers to an educational program that culminates with a standard diploma.

Florida already has the tracking system in place to calculate the cohort graduation rate. However, Florida must adjust its list of applicable graduates and transfers in order to fully comply with the new rules as set forth in Section 200.19(b)(1)(ii)(B)(1).

Federal guidelines stipulate that only students who transfer to another school or educational program that *culminates with a standard diploma* can be removed from the cohort.

Which students are currently removed from the cohort?

Transfers to other public schools, private schools, home education programs, or adult educational programs are currently considered as transfers and removed from the cohort.

Why can't the graduation rate and the dropout rate be added together to get 100%?

The rates apply to different periods of measurement

- Graduation rate is a four-year, cohort-based indicator.
- Dropout rate is a single-year indicator.

The rates apply to different populations

- Graduation rate tracks the progress of a group of students who entered the same grade at the same time over a four-year period.
- Dropout rate tracks *all* ninth- through twelfth-grade students in a *single* year.

Not all non-graduates in the cohort are dropouts. Some students have been retained and are still in school, and some students received certificates of completions. These completers are considered non-graduates, not dropouts.