

MAPLEWOOD ELEMENTARY  
TITLE 1

# SCHOOL ADVISORY COUNCIL MEETING

MARCH 19, 2019  
2:30 PM



# WELCOME!

## Sign-in



Review and approve  
minutes from February's  
meeting



# PROJECT CHARTER MEETING



## Project Charter Meeting Purpose



### 1. CONVEY

The approved scope at your school



### 2. SET AND MANAGE

Expectations for improvements



### 3. ADDRESS

Any questions and concerns

## FOR ADDITIONAL INFORMATION

LEENA ITTY | 754.322.6850 | [leena.itty@browardschools.com](mailto:leena.itty@browardschools.com)

TINA WILLARD | 954.798.2456 | [TWillard@browardschools.com](mailto:TWillard@browardschools.com)

**SAFETY**  
**MUSIC & ART**  
**ATHLETICS**  
**RENOVATION**  
**TECHNOLOGY**

- **SOCIAL AND  
EMOTIONAL  
LEARNING PLAN**

- **SCHOOL  
COUNSELING  
PLAN**

- **ATTENDANCE  
PLAN**

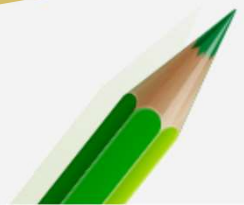


Ms. Orr and Mrs. Mansdorf



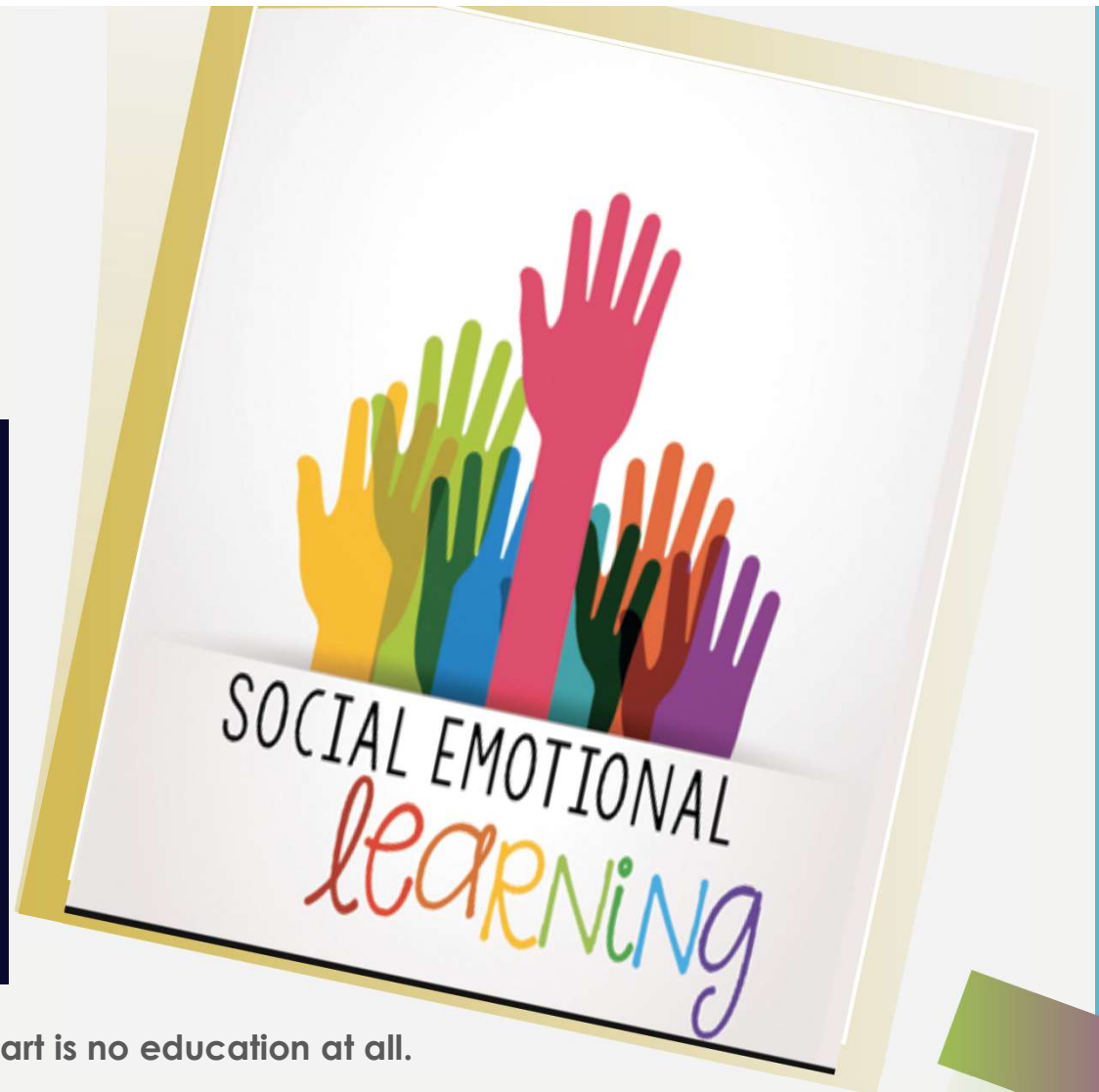
# ATTENDANCE & SEL MATTERS

Mindy Mansdorf & Camille Orr



## WHAT IS SEL?

**SEL is a process for helping children and adults develop the fundamental skills for life effectiveness. SEL teaches the skills we all need to handle ourselves, our relationships, and our work effectively and ethically.**



Educating the mind without educating the heart is no education at all.

# **Social and Emotional Learning**

**Culture and Climate**

How does your school and your own classroom feel to all the members of the learning community?



**Integration**

How do you intentionally address SEL through other academic areas and instructional strategies?

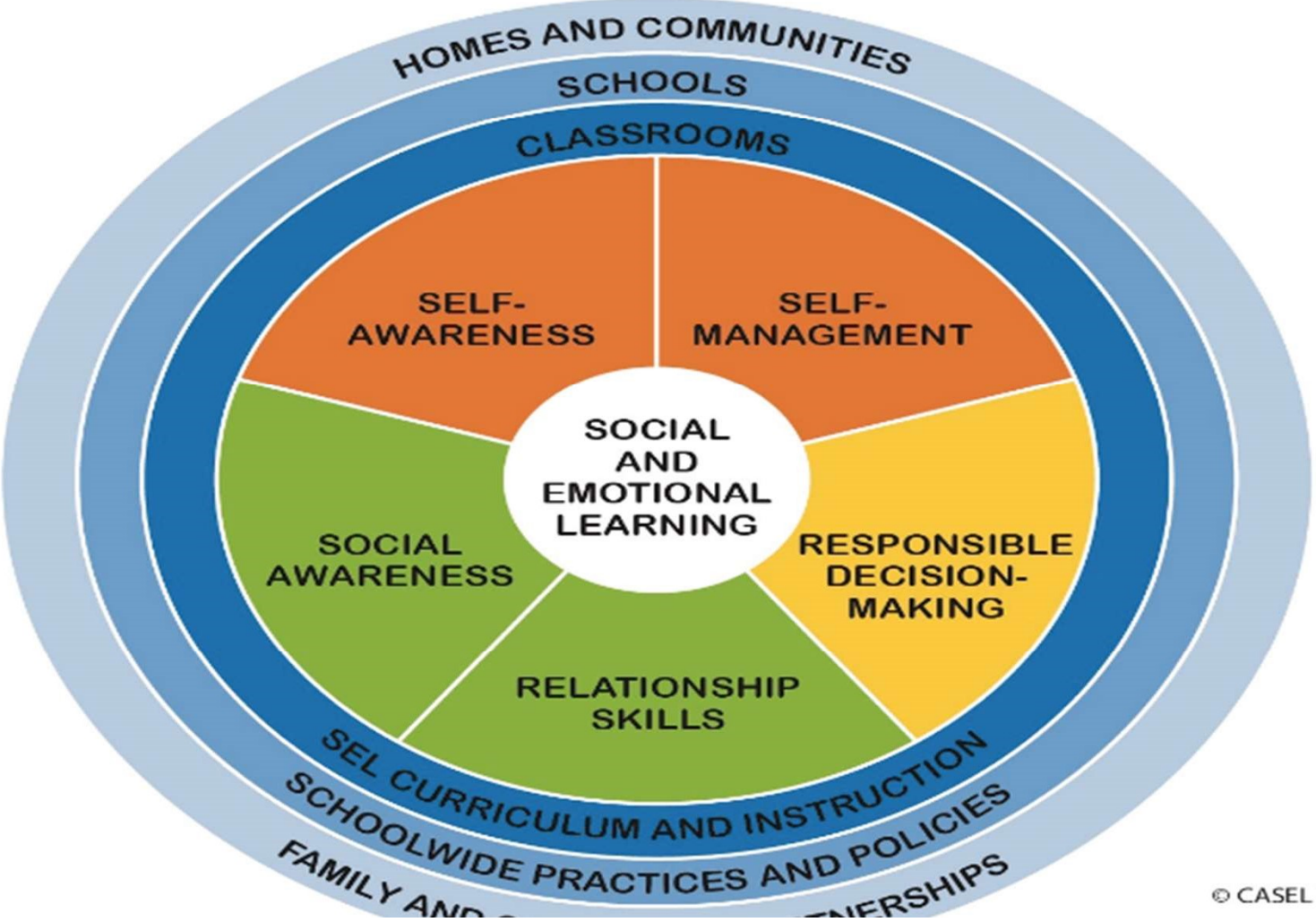


**Explicit Instruction**

How are you intentionally teaching the knowledge and skills of SEL?



**SEL is a process whereby young people and adults acquire knowledge, skills, and dispositions related to five competencies.**





# SOCIAL & EMOTIONAL COMPETENCY

## WHY PROMOTE STUDENTS SOCIAL AND EMOTIONAL COMPETENCY?

Students who receive SEL instruction are:

- More connected to teachers and school
- More engaged in learning
- More motivated to learn
- **Better behaved/less likely to engage in problem behavior**
- Able to perform better on achievement tests and get better grades

# ATTENDANCE COUNTS

**Maplewood's Attendance Plan Goal**  
By the end of the 2018-2019 school year, satisfactory attendance rates at Maplewood Elementary will increase from 53.9 to 57%.

## **Maplewood's Attendance Plan strives to :**

- Create a school wide culture of attendance and engagement

### **This includes:**

- Attendance Incentive Program
- Attendance Hall of Fame

What characterizes Chronic & Severe Absenteeism?


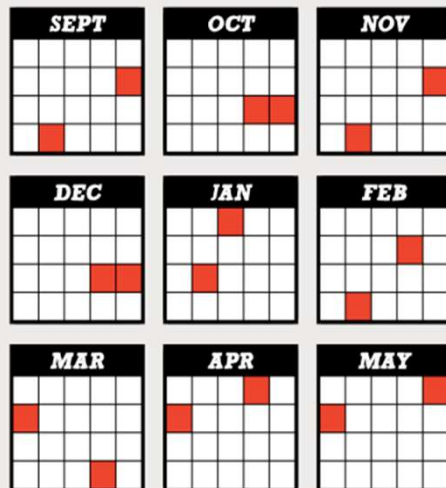
- 5 or more unexcused absences in a quarter

### **Maplewood Data**

Chronic- 12% (10-19%)  
Severe-3% (20% or more)

## ABSENCES ADD UP

**2 Absences Per Month  
x 9 Months of School  
= Less Likely to Graduate  
from High School**



Encouraging regular school attendance is one of the most powerful ways you can prepare your child for success—both in school and in life. When you make school attendance a priority, you help your child get better grades, develop healthy life habits, and have a better chance of graduating from high school.

# TITLE 1 UPDATES

MRS. THIBEAULT



# PRINCIPAL'S REPORT



MRS. ITTY

MAPLEWOOD ELEMENTARY  
TITLE 1

# SCHOOL ADVISORY COUNCIL MEETING

NEXT MEETING:  
APRIL 25, 2019  
2:30 PM

