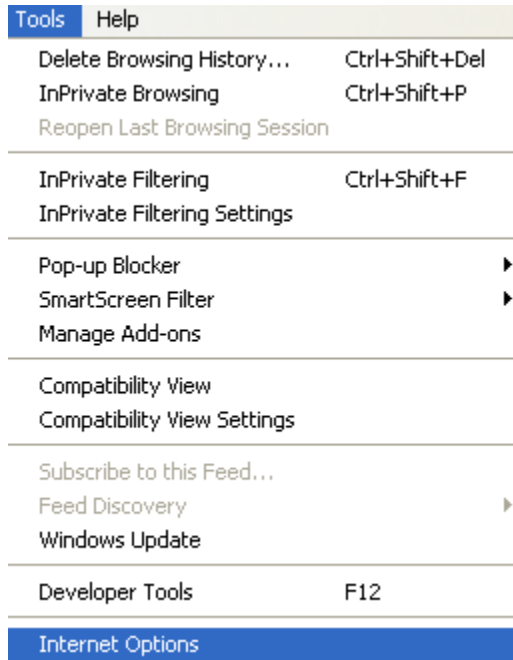
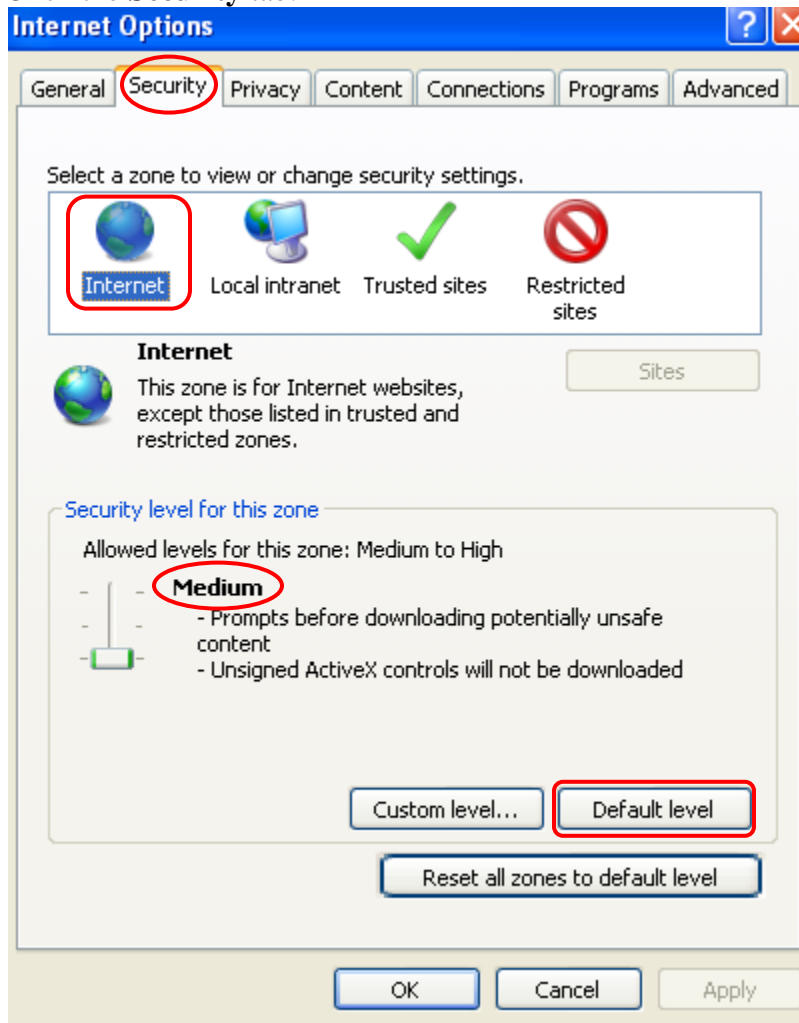


Verify **IE 8.0** Browser settings:  
Under **Tools**, select **Internet Options**:

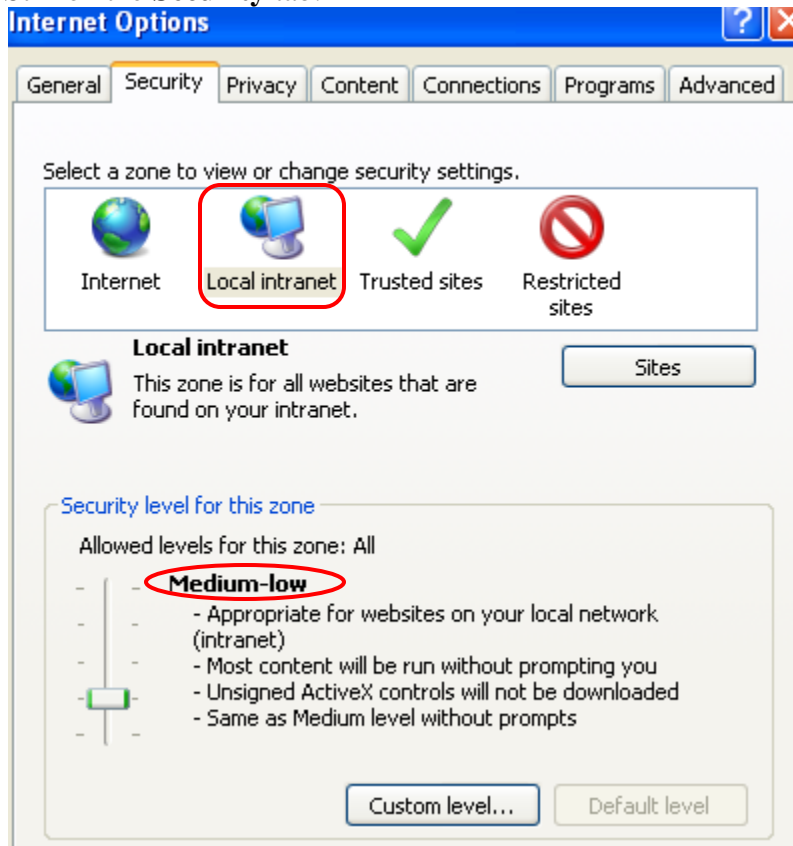


Click the **Security** tab:



Click the **Internet** globe, then the **Default level** button.  
Set the slider to **Medium**

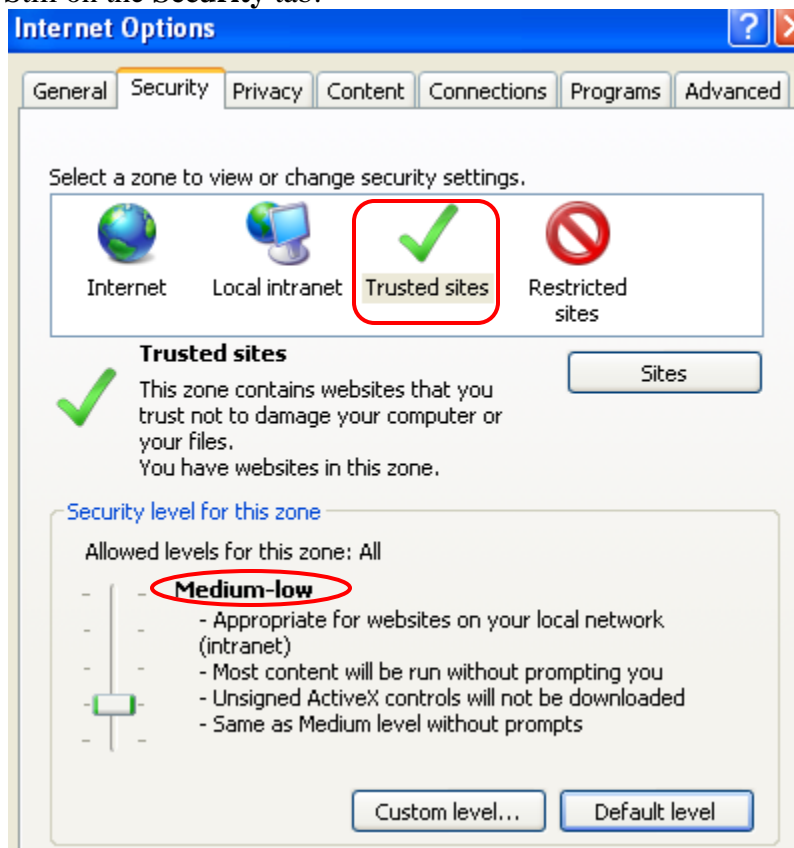
Still on the **Security** tab:



Click the Local Intranet icon

Set the slider to **Medium-low**. (You may have to click the Default level button first)

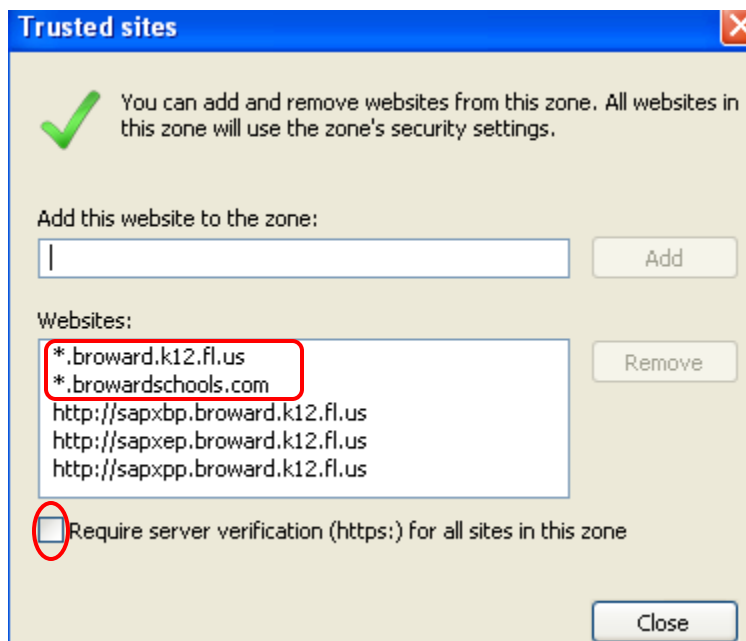
Still on the **Security** tab:



Click the **Trusted sites** icon.

Set the slider to **Medium-low**. (You may have to click the **Default level** button first)

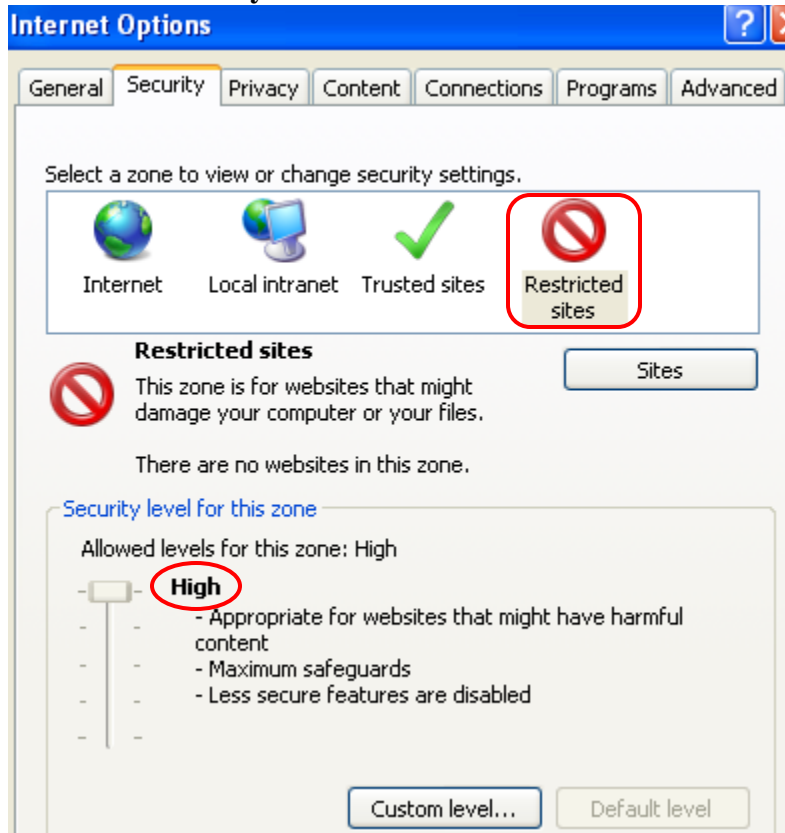
Click the **Sites** button:



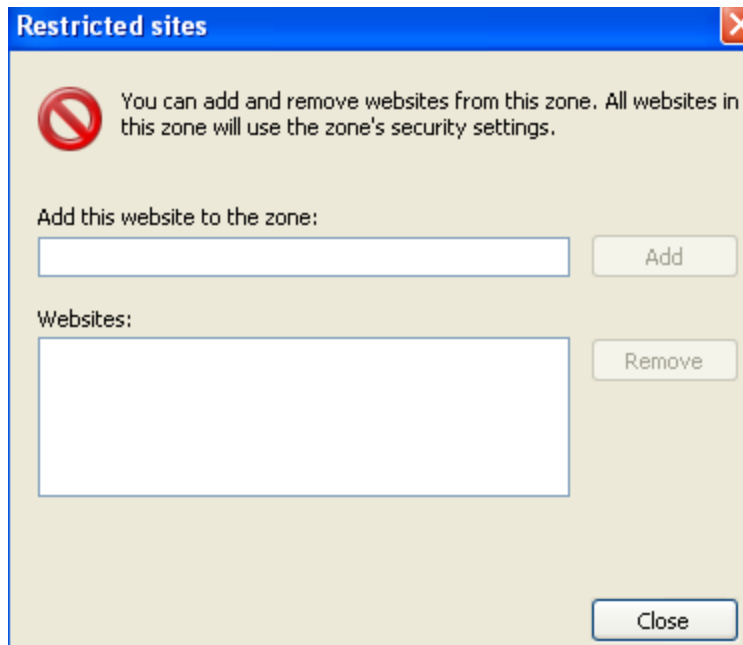
If **\*.broward.k12.fl.us** is not in the list, then add it.

Make sure the https box is NOT checked.  
You may also add \*.browardschools.com if you would like.  
Click **Close**.

Still on the **Security** tab:

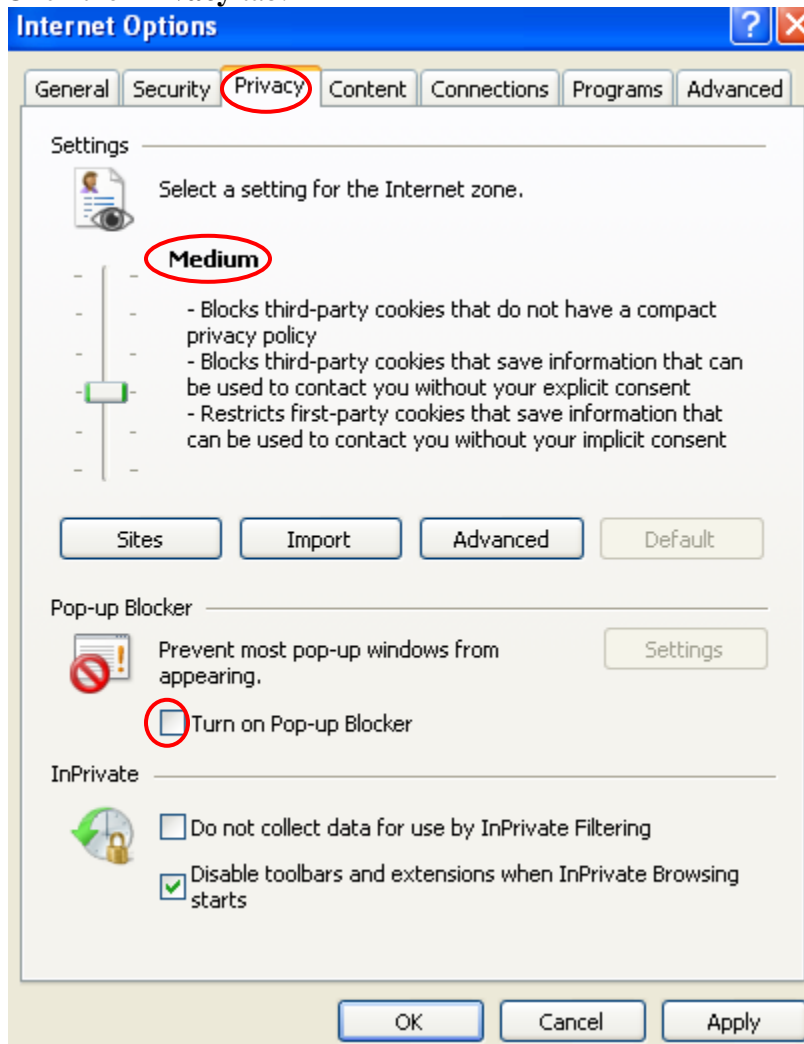


Click the **Restricted sites** icon  
Set the slider to **High**. (You may have to click the **Default level** button first)  
Click the **Sites** Button.



NO entries should exist in the list of Websites.

Click the **Privacy** tab:



Set to **Medium**

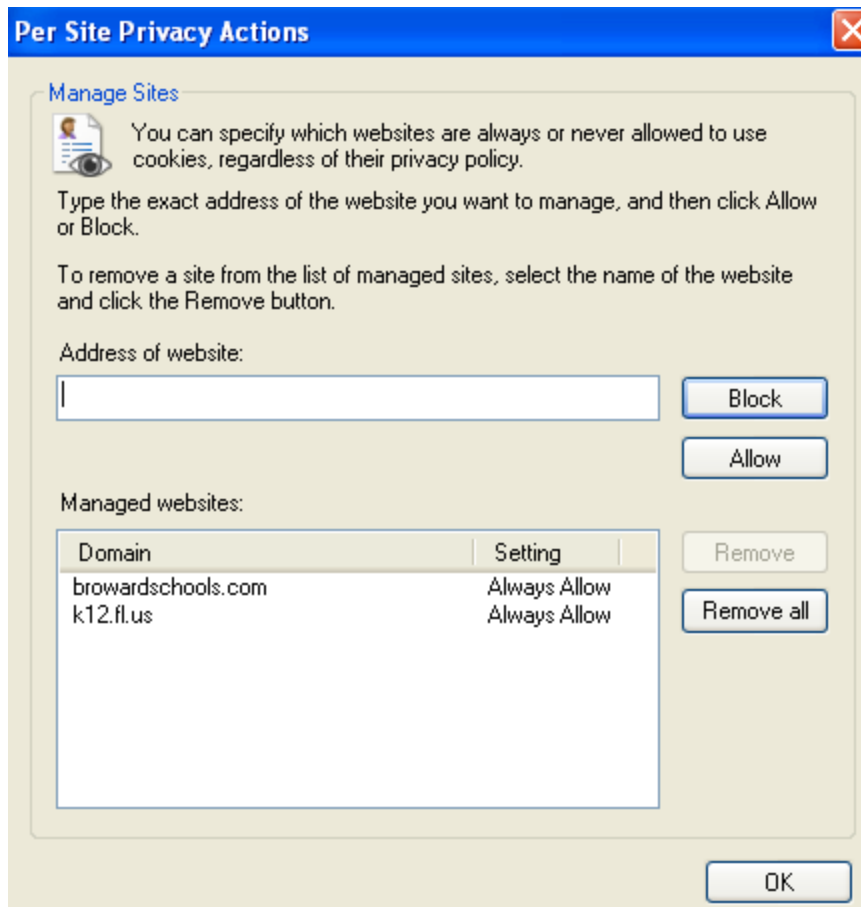
Disable (uncheck) “Turn on Pop-up Blocker

Click the **Sites** button.

Add the following entries for **Always Allow**:

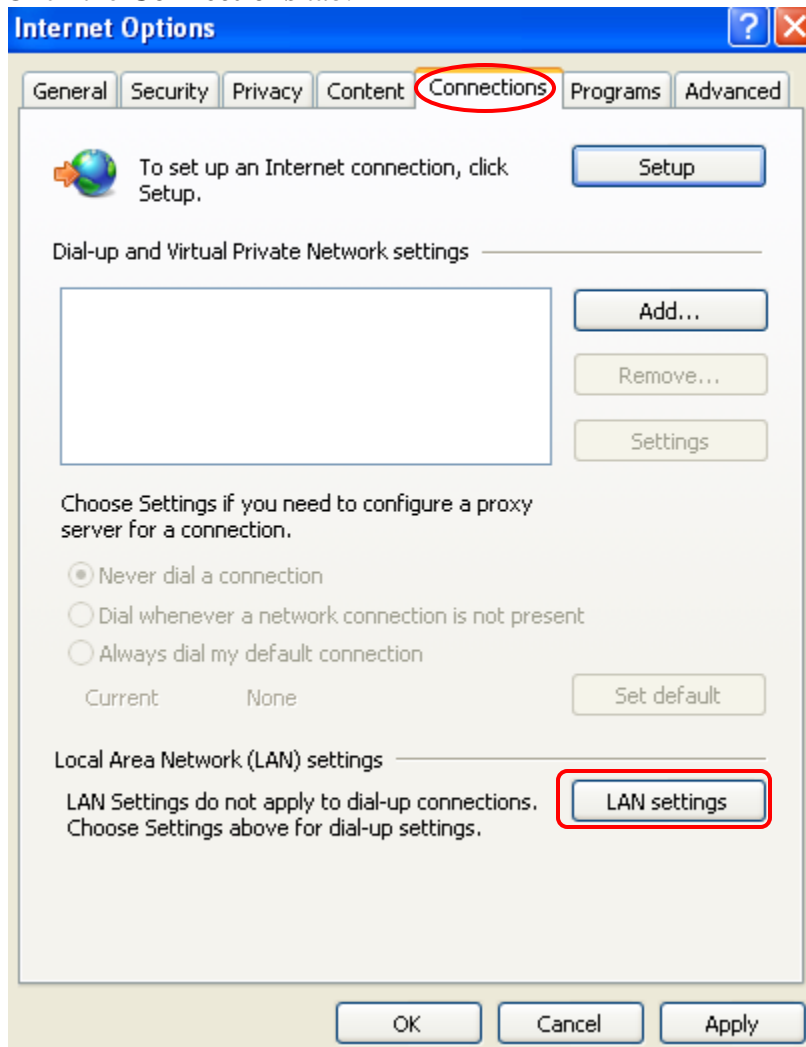
**Broward.k12.fl.us** (will display as k12.fl.us)

**Browardschools.com**

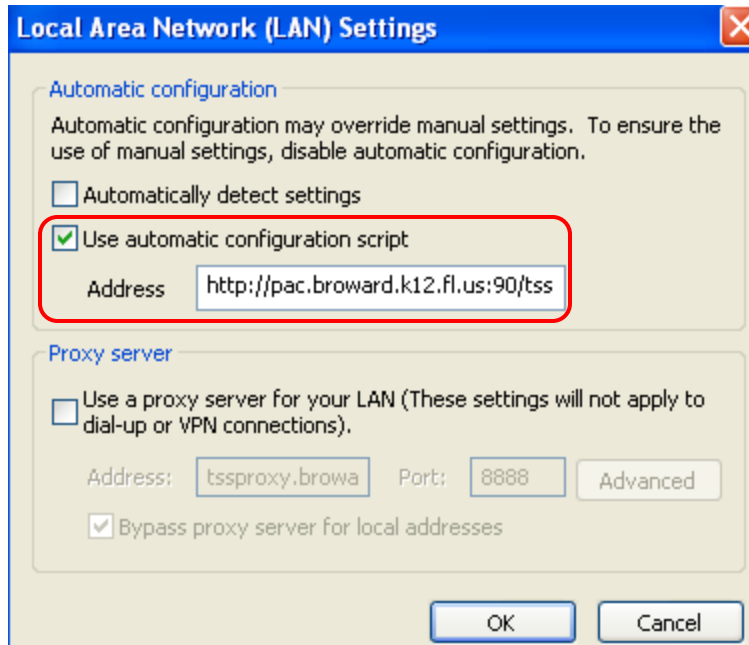


Click **OK**.

Click the **Connections** tab:

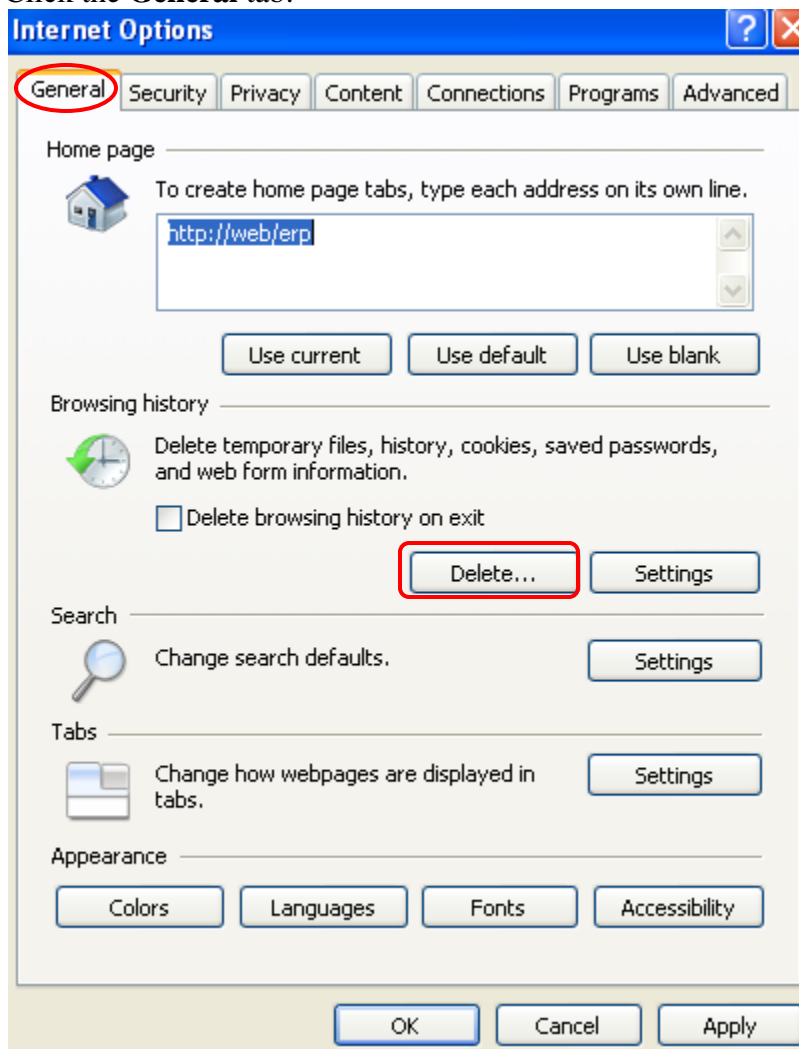


Click the **LAN settings** button.



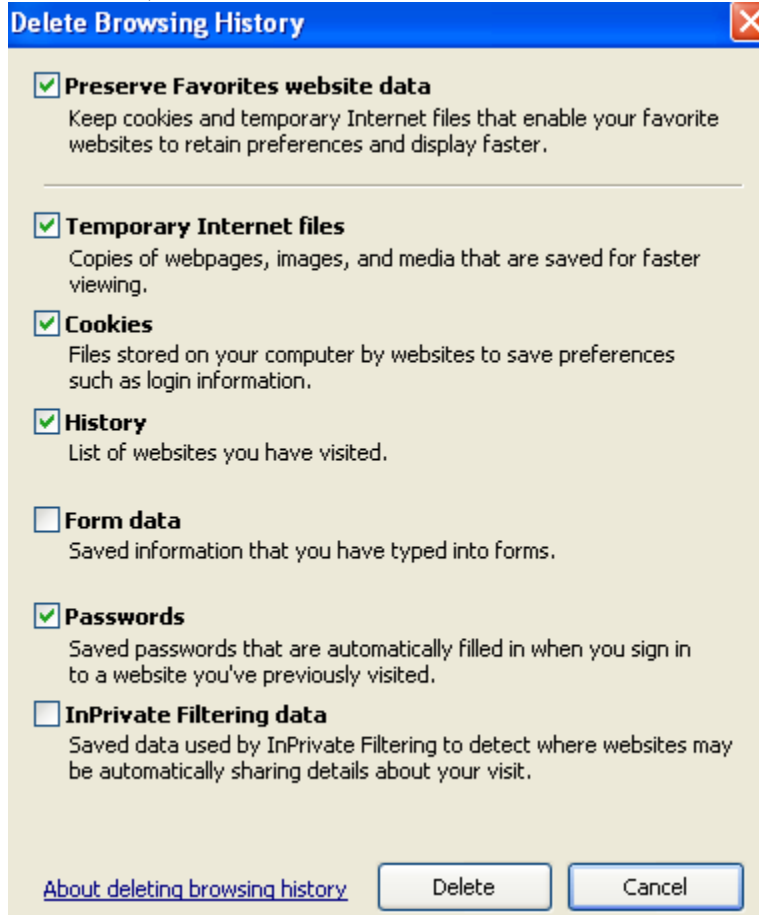
Only the “Use automatic configuration script” box should be checked (like above). The address in the box should be <http://pac.broward.k12.fl.us:90/tss.pac>. If the tss.pac is replaced by the location’s ship-to code (like pih.pac), then that is okay too. Click **OK** to close the window.

Click the **General** tab:



Click **Delete**

Check the boxes indicated below: (**Temporary Internet files, Cookies, History, Passwords**)



Click **Delete** button:

Logoff the portal and close ALL IE browser windows, then start IE again to logon