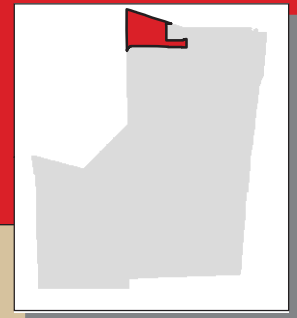


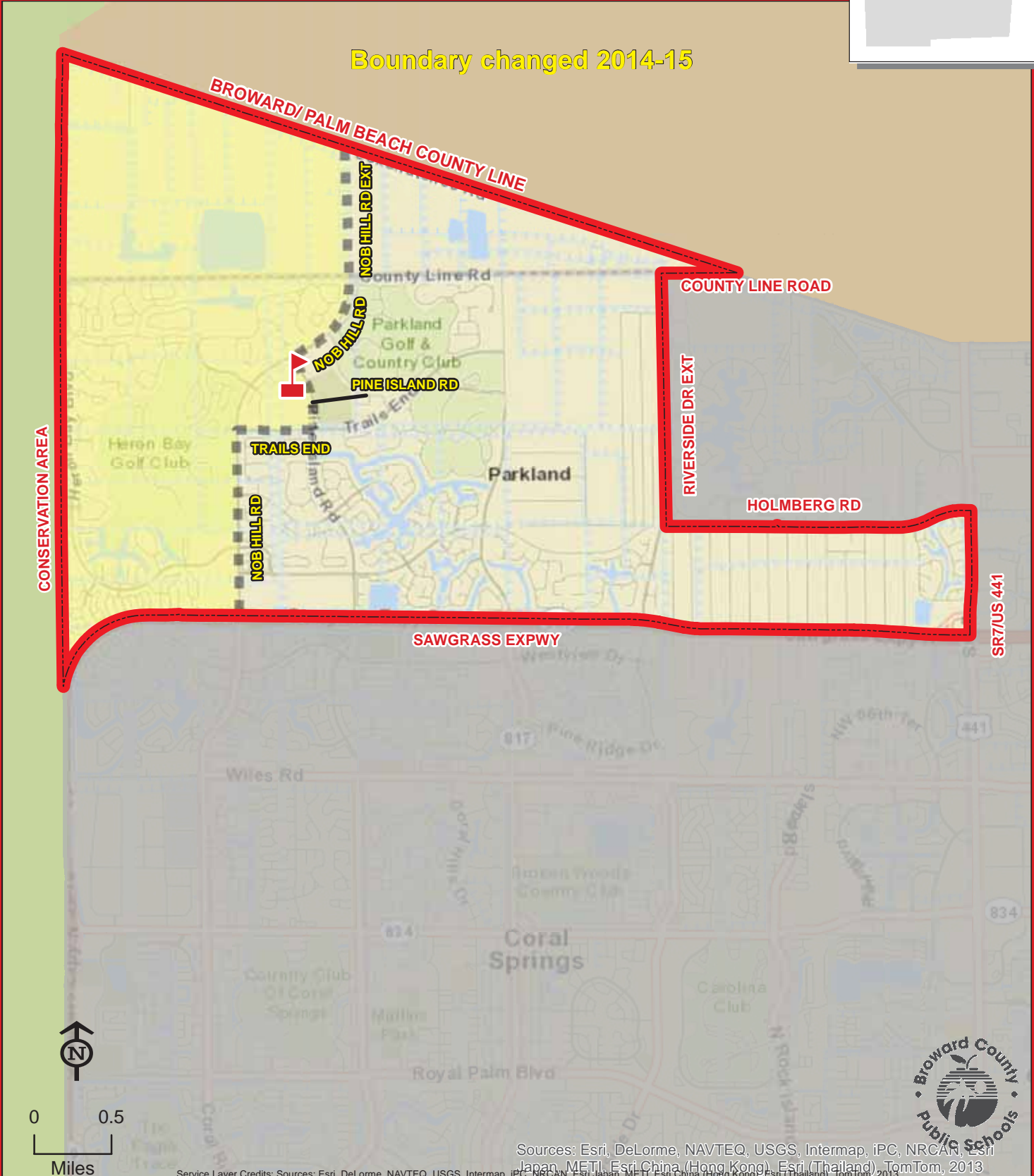
HERON HEIGHTS ELEMENTARY SCHOOL

11010 NOB HILL ROAD
PARKLAND, FLORIDA 33076
754-322-9150

Geographic Priority Area
(Information on reverse side)



Boundary changed 2014-15



Sources: Esri, DeLorme, NAVTEQ, USGS, Intermap, iPC, NRCAN, Esri Japan, METI, Esri China (Hong Kong), Esri (Thailand), TomTom, 2013

Service Layer Credits: Sources: Esri, DeLorme, NAVTEQ, USGS, Intermap, iPC, NRCAN, Esri Japan, METI, Esri China (Hong Kong), Esri (Thailand), TomTom, 2013

THIS MAP IS FOR CONCEPTUAL PURPOSES ONLY AND SHOULD NOT BE USED FOR LEGAL BOUNDARY DETERMINATIONS

HERON HEIGHTS ELEMENTARY SCHOOL

Geographic Priority Area

HERON HEIGHTS ELEMENTARY AND PARK TRAILS ELEMENTARY

Combine the current attendance areas of Heron Heights Elementary and Park Trails Elementary so that all students remain at their current elementary school until they reach the sixth grade. New students entering school in the combined attendance area in the 2014-2015 school year and thereafter will have the opportunity to request either school. Siblings will be guaranteed placement in the same school. Following sibling placement, all remaining seats, pending availability, will be filled through parent request, giving geographic priority based on the existing 2013-2014 Heron Heights Elementary and Park Trails Elementary attendance areas.