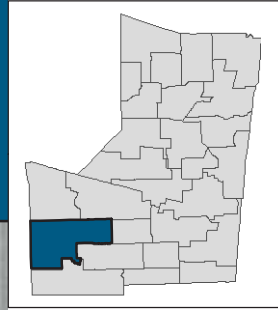


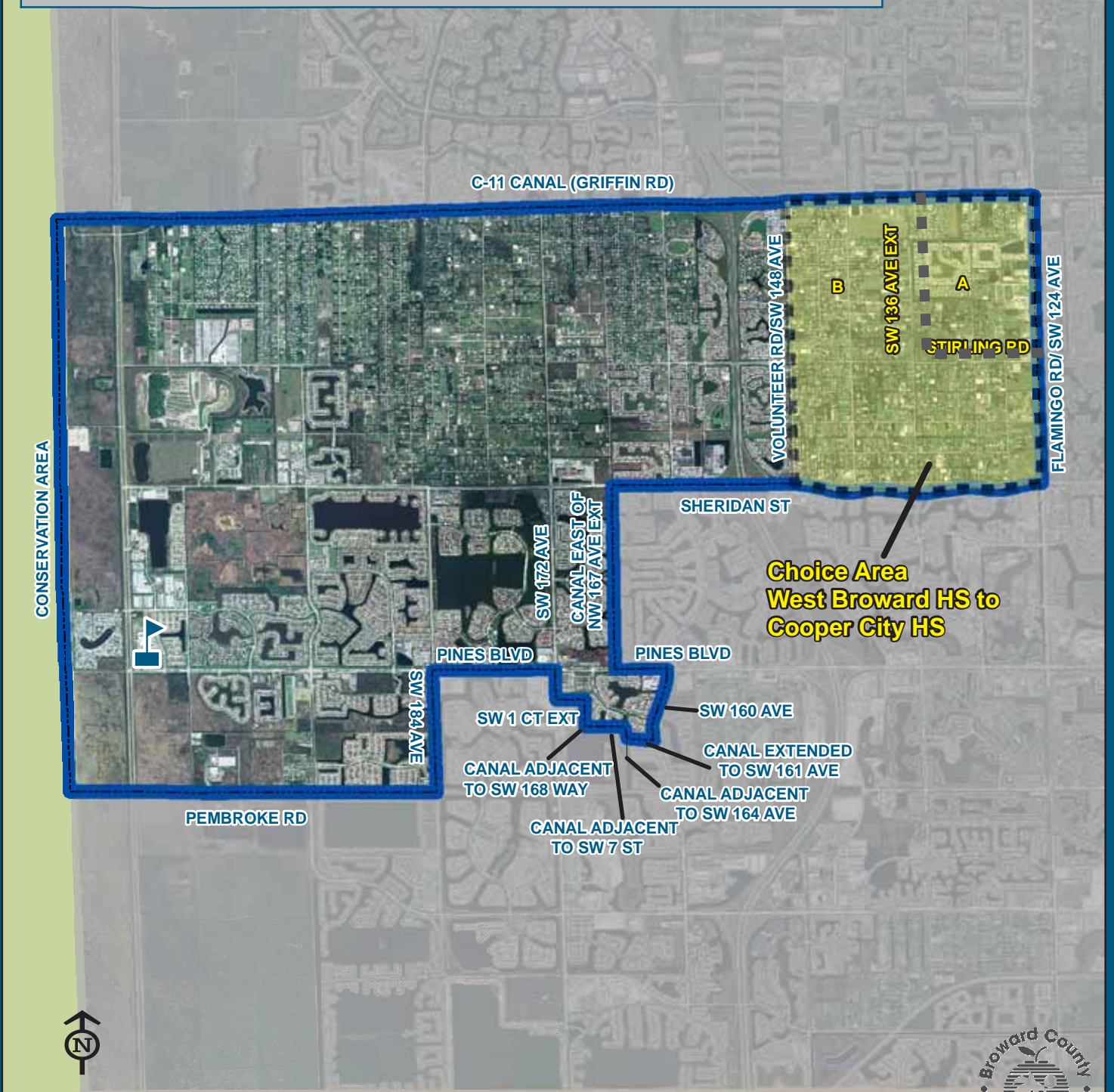
WEST BROWARD HIGH SCHOOL

500 NW 209 AVENUE
PEMBROKE PINES, FLORIDA 33029
754-323-2600

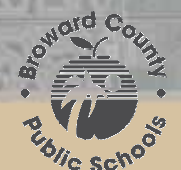
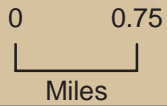
Choice Area
(Information on reverse side)



High School students residing on both sides of US 27 in seasonal or temporary facilities from the Miami-Dade County line to the Palm Beach County line attend West Broward High School.



WEST BROWARD



THIS MAP IS FOR CONCEPTUAL PURPOSES ONLY AND SHOULD NOT BE USED FOR LEGAL BOUNDARY DETERMINATIONS

WEST BROWARD HIGH SCHOOL

Choice Area Description

WEST BROWARD HIGH TO COOPER CITY HIGH:

- A** Ninth through twelfth grade students residing within the area bounded by SW 136 Avenue Extended and Griffin Road, east along Griffin Road to Flamingo Road, south along Flamingo Road to Stirling Road, west along Stirling Road to SW 136 Avenue Extended, north to Griffin Road are assigned to West Broward High School with a choice to attend Cooper City High School.
- B** Ninth through twelfth grade students residing within the area bounded by Griffin Road and SW 136 Avenue Extended, south along SW 136 Avenue Extended to Stirling Road, east along Stirling Road to Flamingo Road/SW 124 Avenue, south along Flamingo Road/SW 124 Avenue to Sheridan Street, west along Sheridan Street to SW 148 Avenue, north along SW 148 Avenue to Griffin Road, east along Griffin Road to SW 136 Avenue Extended are assigned to West Broward High School with a choice to attend Cooper City High School.

Students interested in attending the Choice School must apply for a reassignment between May 1 and June 15. The reassignment application is available online at www.browardschools.com, or through the Innovative Programs office at (754) 321-2380.