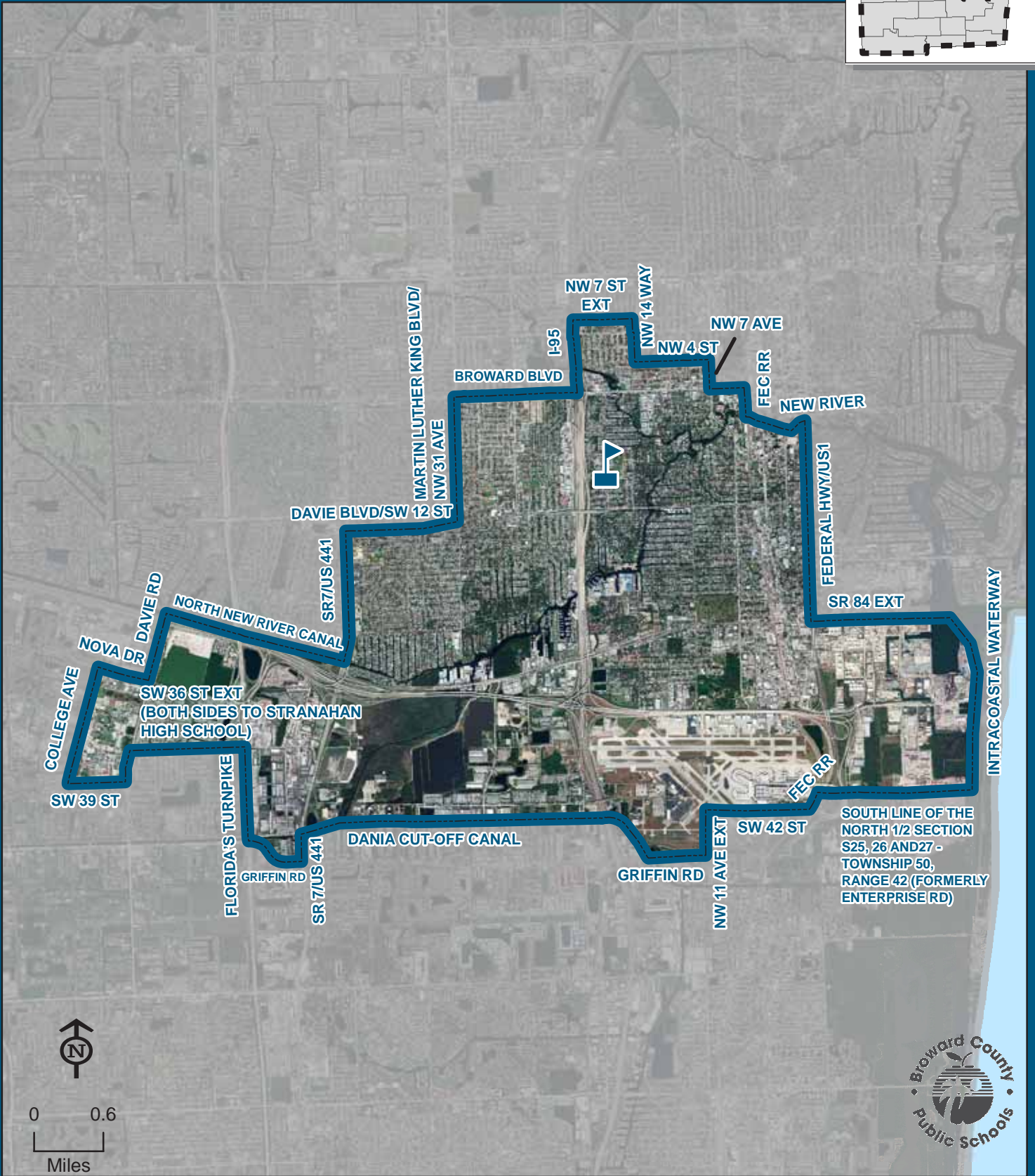
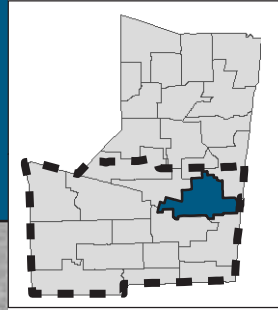


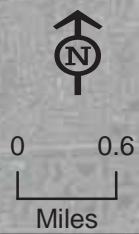
STRANAHAN HIGH SCHOOL

1800 SW 5 PLACE
FORT LAUDERDALE, FLORIDA 33312
754-323-2100

Magnet School
(Information on reverse side)



STRANAHAN



THIS MAP IS FOR CONCEPTUAL PURPOSES ONLY AND SHOULD NOT BE USED FOR LEGAL BOUNDARY DETERMINATIONS

STRANAHAN HIGH SCHOOL

Magnet Programs

SCIENCE/PRE-ENGINEERING:

Students residing within the Stranahan High attendance area automatically attend this school. Students residing south of Sunrise Boulevard that meet the eligibility requirements may apply for admission to the Science/Pre-Engineering Program and receive transportation in accordance with Transportation Policy. Students will be admitted in accordance with the provisions of School Board Policy 5004.1. Application and deadline information is available online at www.browardschoolsmagnetprograms.com or through the Innovative Programs office at (754) 321-2380.

MEDICAL SCIENCES:

Students residing within the Stranahan High attendance area automatically attend this school. Students residing south of Sunrise Boulevard that meet the eligibility requirements may apply for admission to the Medical Sciences Program and receive transportation in accordance with Transportation Policy. Students will be admitted in accordance with the provisions of School Board Policy 5004.1. Application and deadline information is available online at www.browardschoolsmagnetprograms.com or through the Innovative Programs office at (754) 321-2380.