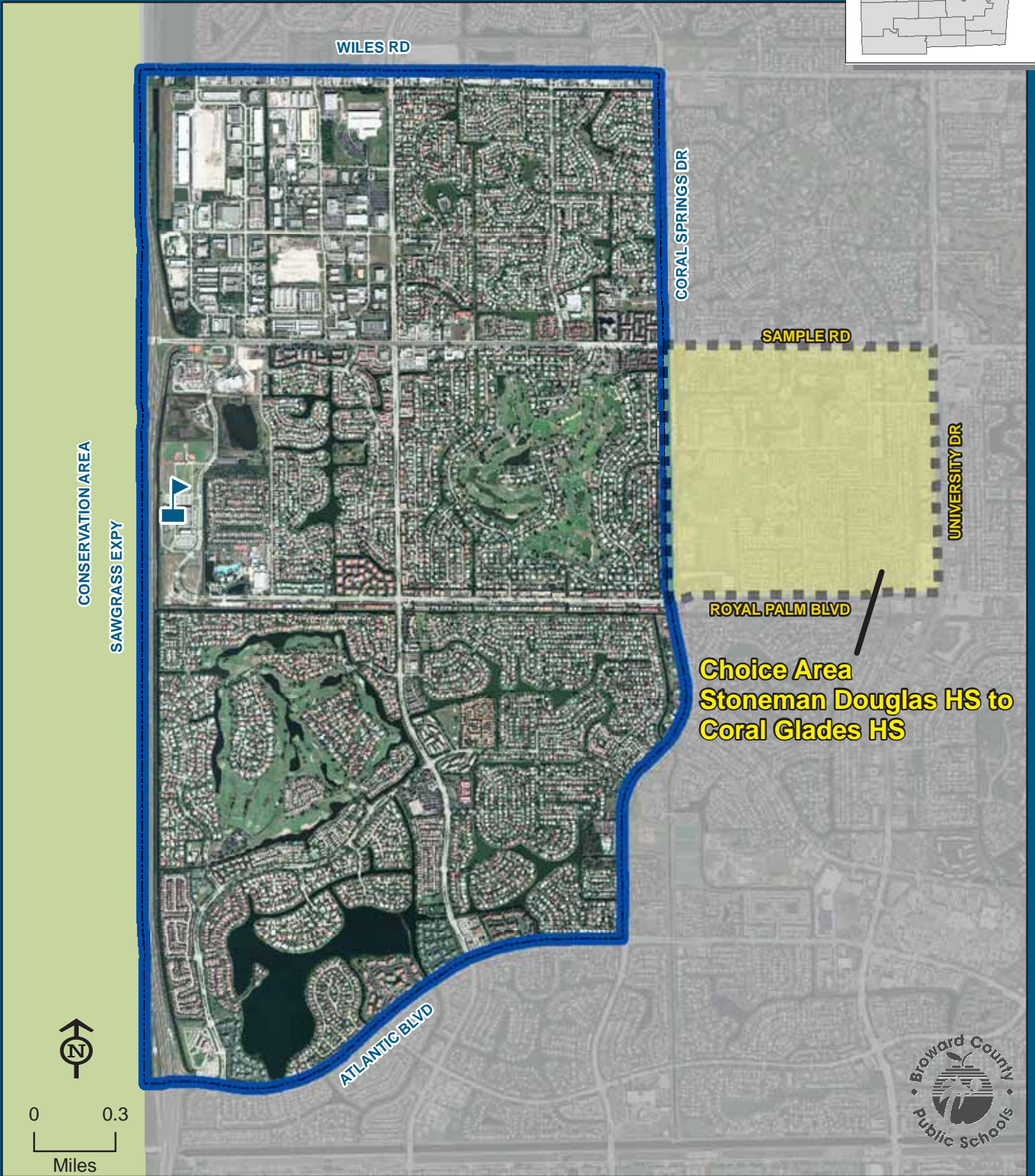
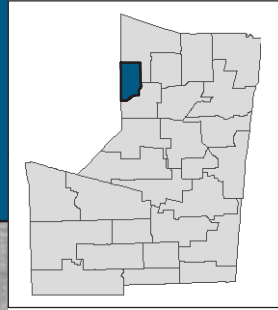


# CORAL GLADES HIGH SCHOOL

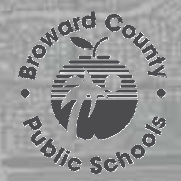
2700 SPORTSPLEX DRIVE  
CORAL SPRINGS, FLORIDA 33065  
754-322-1250

**Choice Area**

(Information on reverse side)



THIS MAP IS FOR CONCEPTUAL PURPOSES ONLY AND SHOULD NOT BE USED FOR LEGAL BOUNDARY DETERMINATIONS



# **CORAL GLADES HIGH SCHOOL**

## **Choice Area Description**

### **MARJORY STONEMAN DOUGLAS HIGH TO CORAL GLADES HIGH:**

Ninth through twelfth grade students who attended Sawgrass Springs Middle School for the 2006-07 school year residing within the area bounded by Coral Springs Drive and Sample Road, east along Sample Road to University Drive, south along University Drive to Royal Palm Boulevard, west along Royal Palm Boulevard to Coral Springs Drive, north along Coral Springs Drive to Sample Road are assigned to Stoneman Douglas High School with a choice to attend Coral Glades High School.

Students interested in attending the Choice School must apply for a reassignment between May 1 and June 15. The reassignment application is available online at [www.browardschools.com](http://www.browardschools.com), or through the Innovative Programs office at (754) 321-2380.