

**THE SCHOOL BOARD OF
BROWARD COUNTY, FLORIDA
2010-2011 ORGANIZATIONAL CHART**

Board Approved: 06/02/10 07/21/10 07/27/10

**THE SCHOOL BOARD OF BROWARD COUNTY, FLORIDA
2010-2011 ORGANIZATIONAL CHART**

TABLE OF CONTENTS

Superintendent of Schools.....1

School Operations.....2

Office of Deputy Superintendent Curriculum.....3

Office of the Deputy Superintendent Educational Programs & Support.....4A & 4B

Office of the Chief Auditor.....5

Office of the Chief Financial Officer (CFO).....6

 • **Enterprise Resource Planning (ERP) Project6A**

Human Resource Development (HRD).....7

Public Relations, Governmental Affairs, & Partnerships.....8

Human Resources.....9

Office of Chief Operations Officer.....10

 • **Transportation and Physical Plant Operations.....10A**

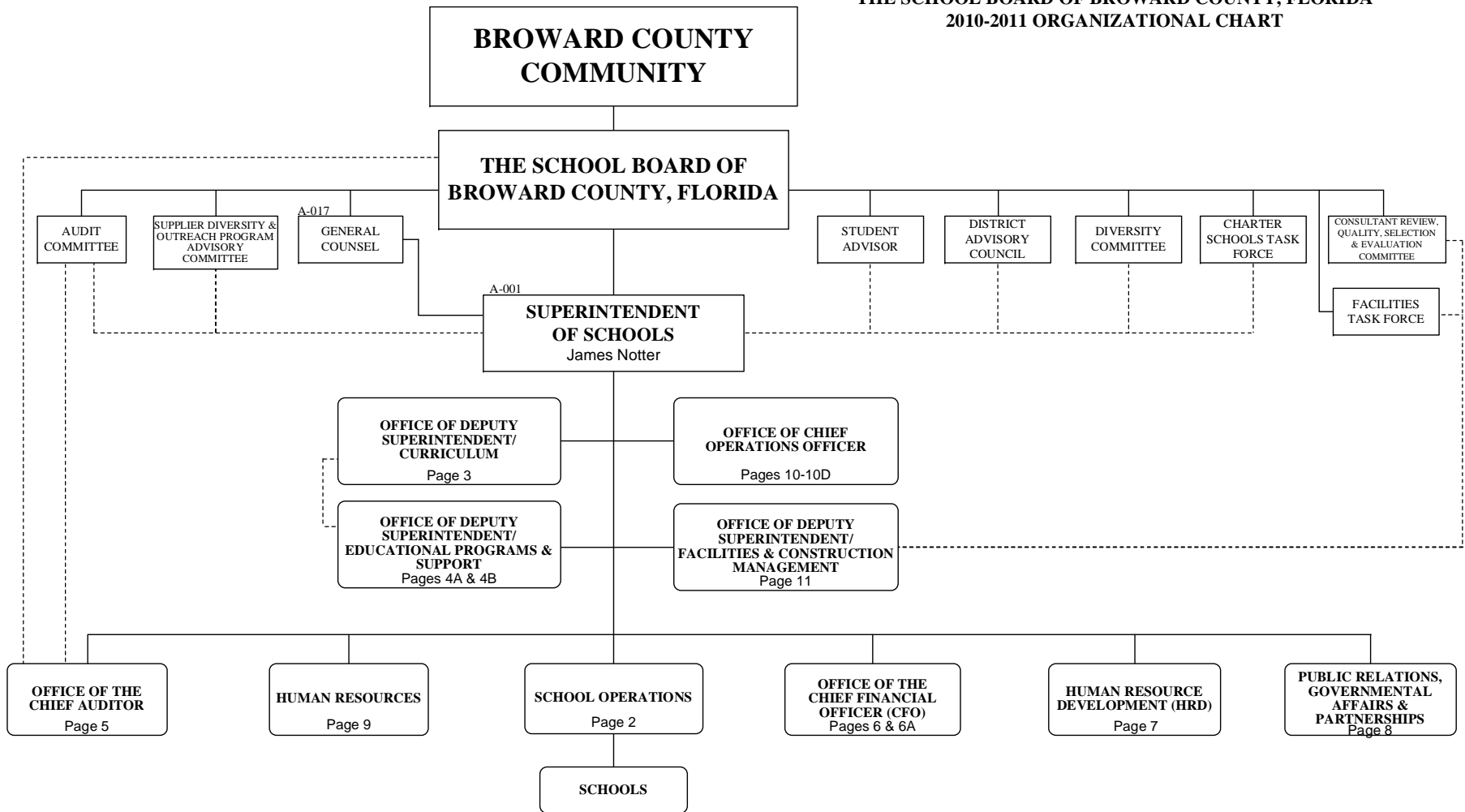
 • **Broward Educational Communications Network (BECON)..... 10B**

 • **Support Operations (Food & Nutrition Services, Supply Mgmt. & Logistics, Safety & Chief Fire Official, Risk Mgmt., & Inspectors).....10C**

 • **Educational Technology Services (ETS)..... 10D**

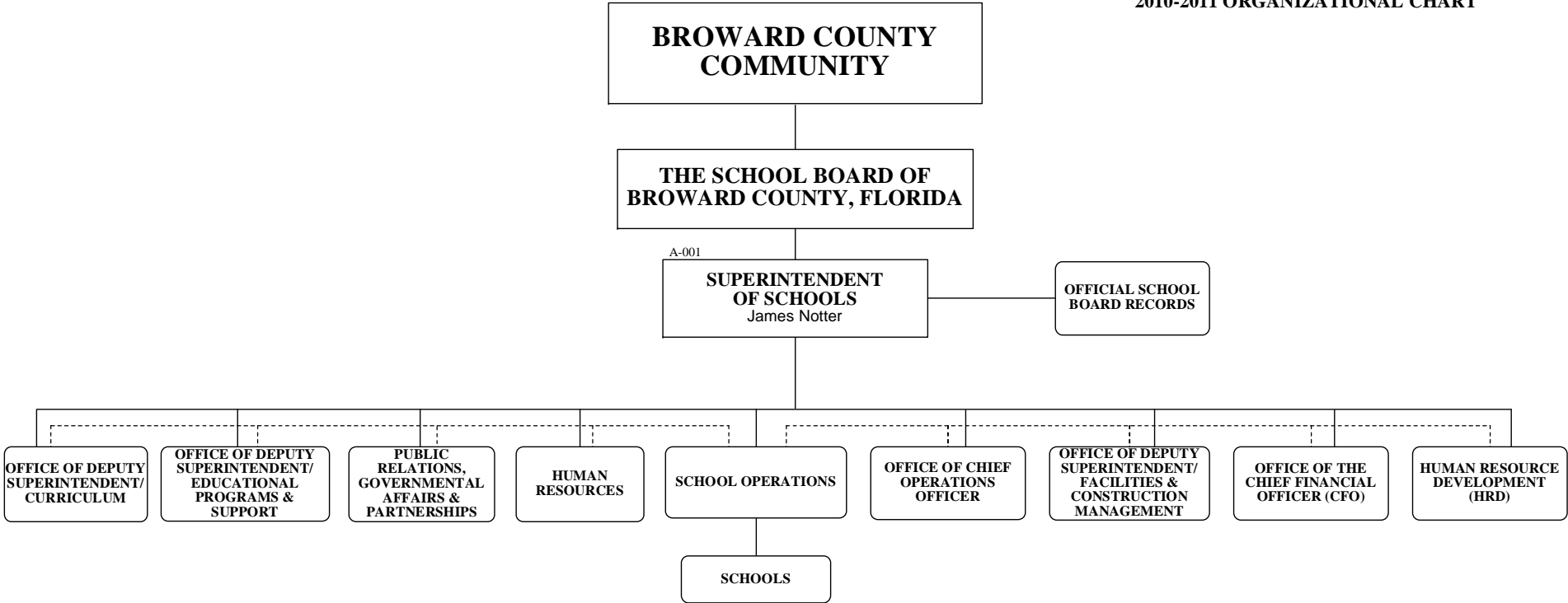
Office of the Deputy Superintendent/Facilities & Construction Management.....11

**THE SCHOOL BOARD OF BROWARD COUNTY, FLORIDA
2010-2011 ORGANIZATIONAL CHART**



Approved: 06/02/10

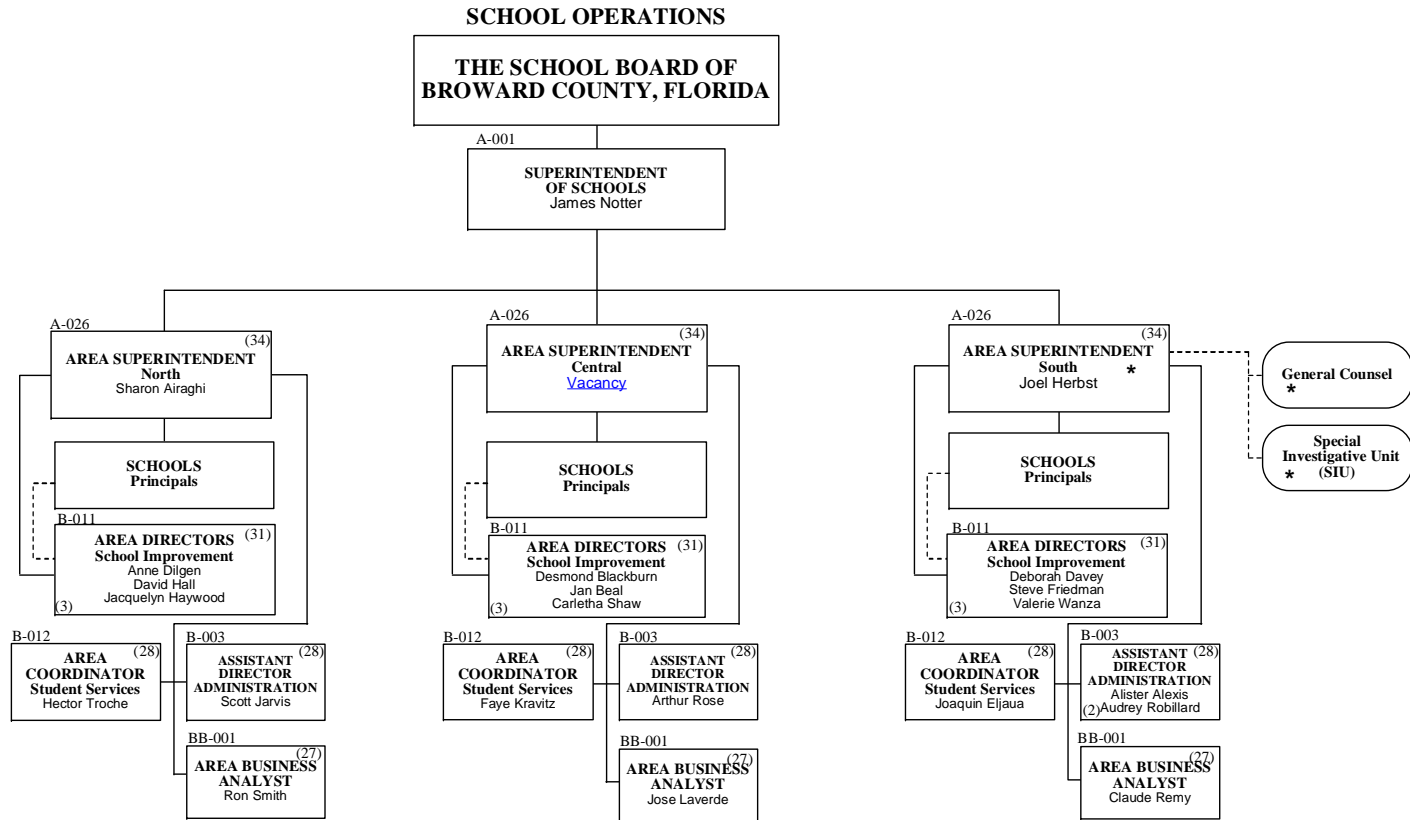
THE SCHOOL BOARD OF BROWARD COUNTY, FLORIDA
2010-2011 ORGANIZATIONAL CHART



Approved: 06/02/10

**THE SCHOOL BOARD OF BROWARD COUNTY, FLORIDA
2010-2011 ORGANIZATIONAL CHART**

* The South Office will coordinate all expulsions.



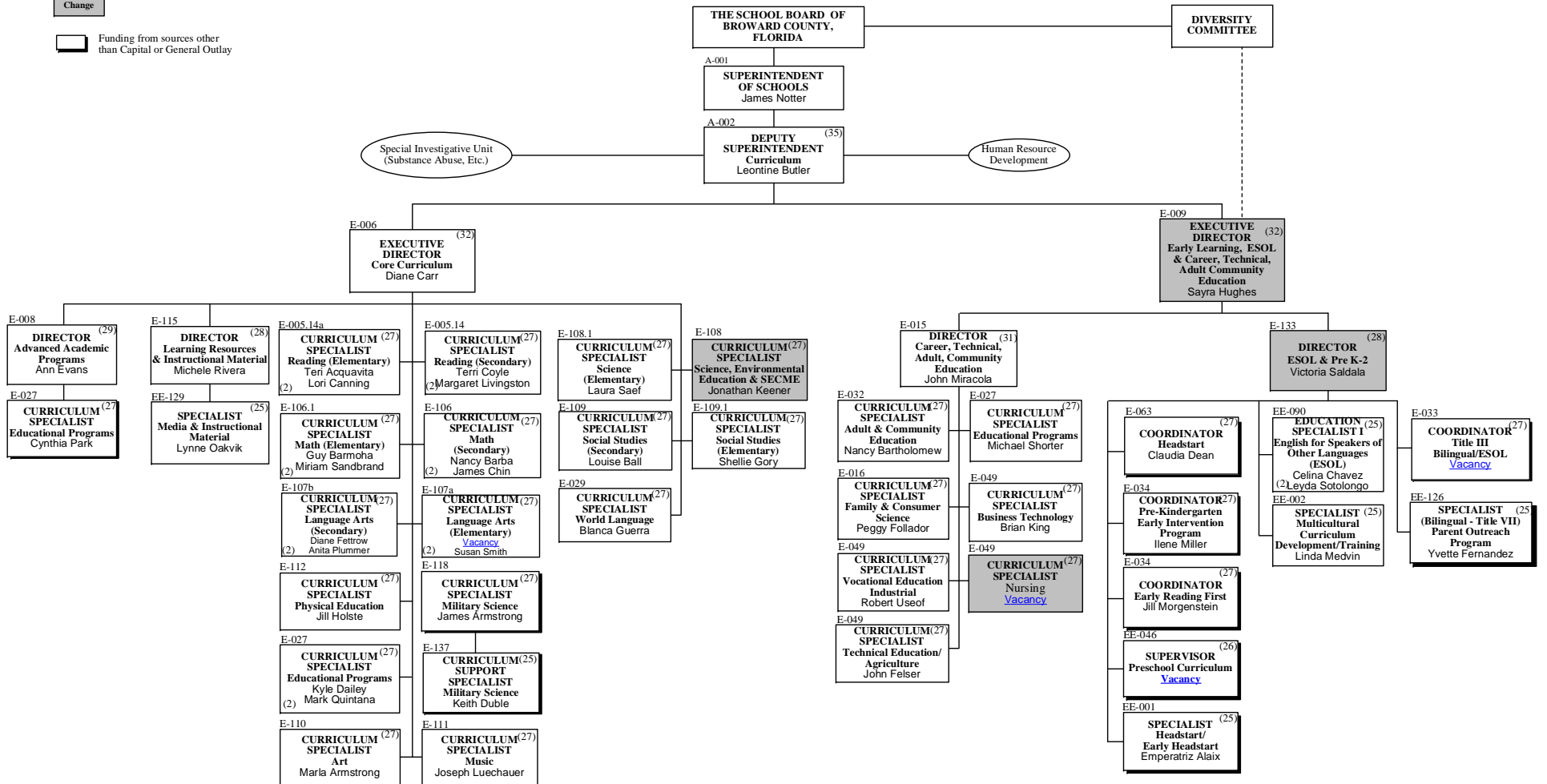
Approved: 06/02/10

THE SCHOOL BOARD OF BROWARD COUNTY, FLORIDA
2010-2011 ORGANIZATIONAL CHART

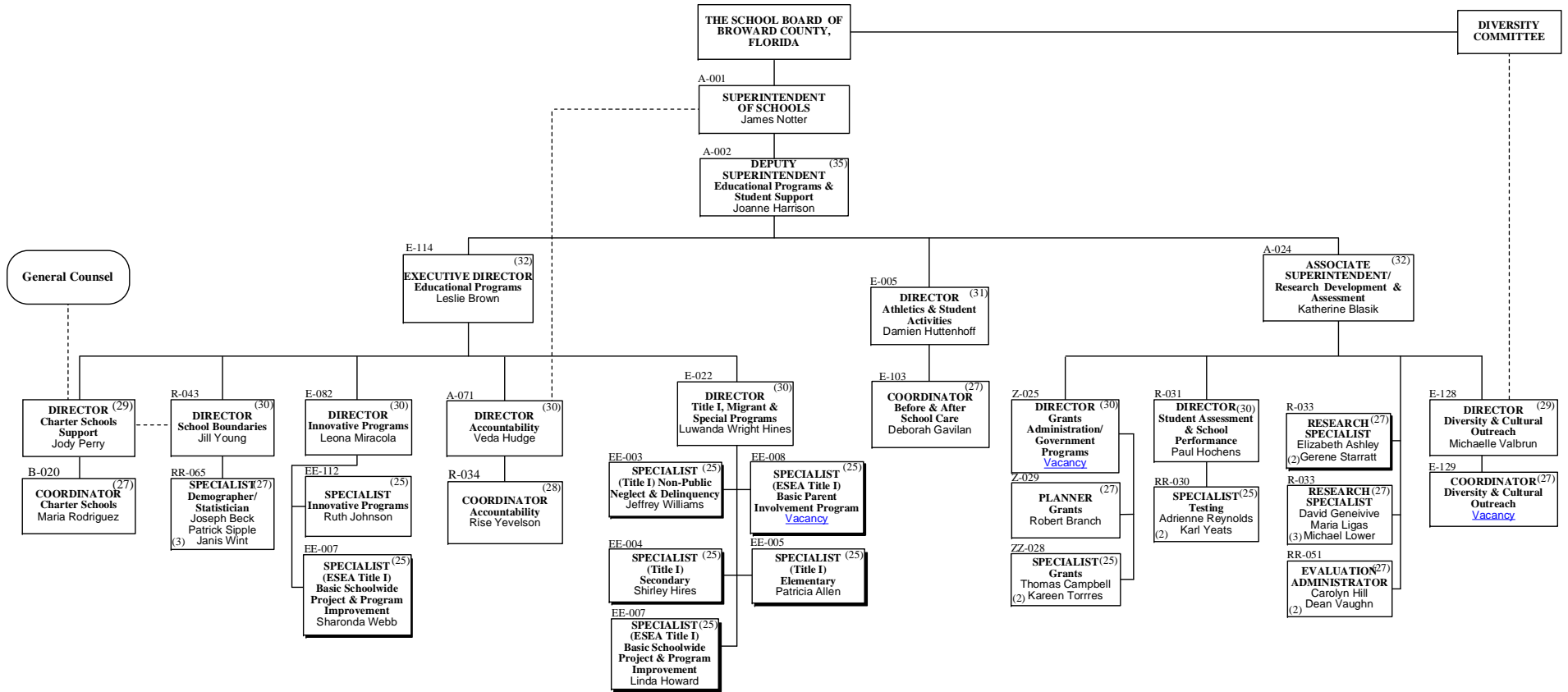
Title Change

Funding from sources other than Capital or General Outlay

CURRICULUM



EDUCATIONAL PROGRAMS & STUDENT SUPPORT



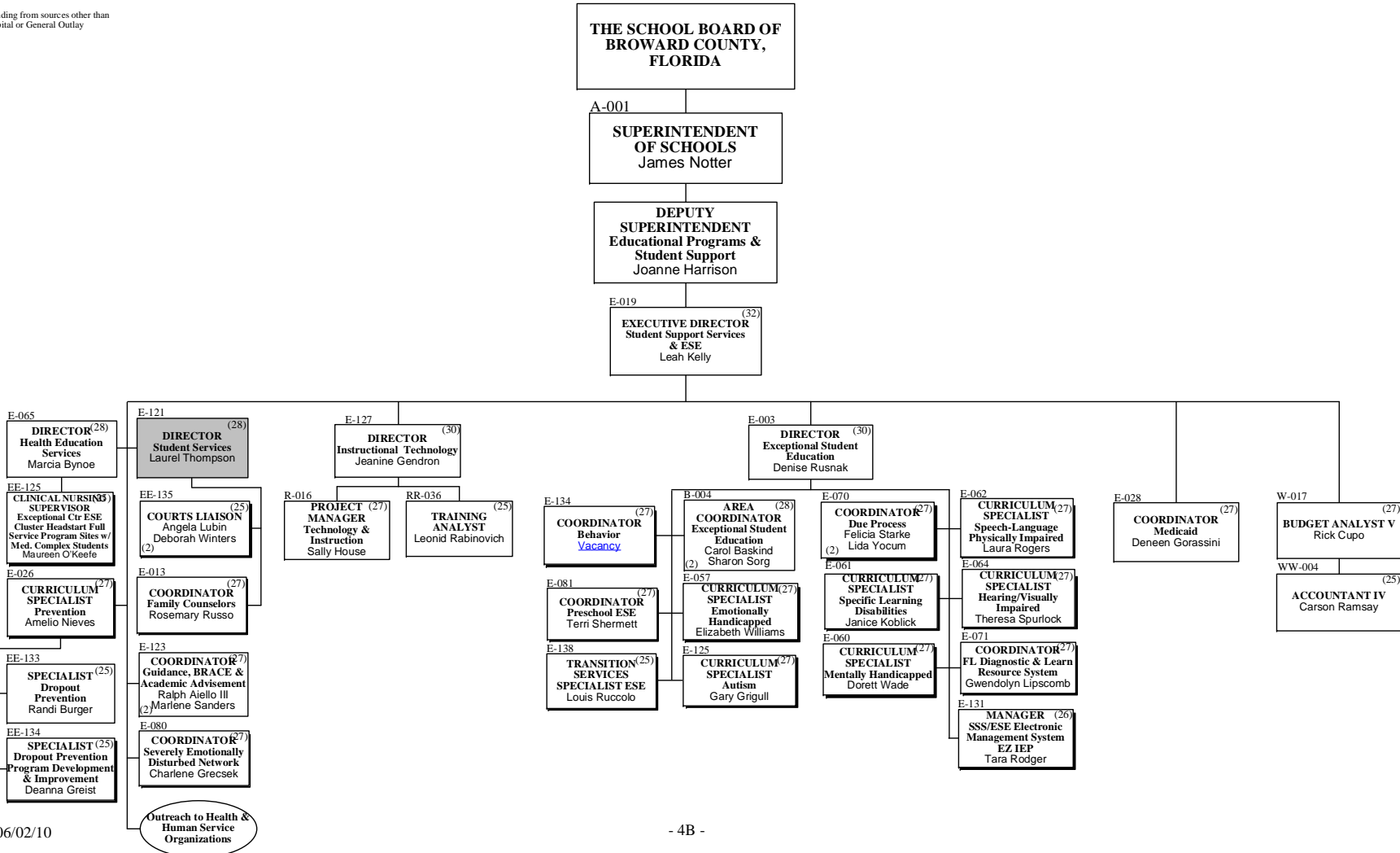
Approved: 06/02/10

THE SCHOOL BOARD OF BROWARD COUNTY, FLORIDA
2010-2011 ORGANIZATIONAL CHART

EDUCATIONAL PROGRAMS & STUDENT SUPPORT

Title Change

Funding from sources other than
Capital or General Outlay

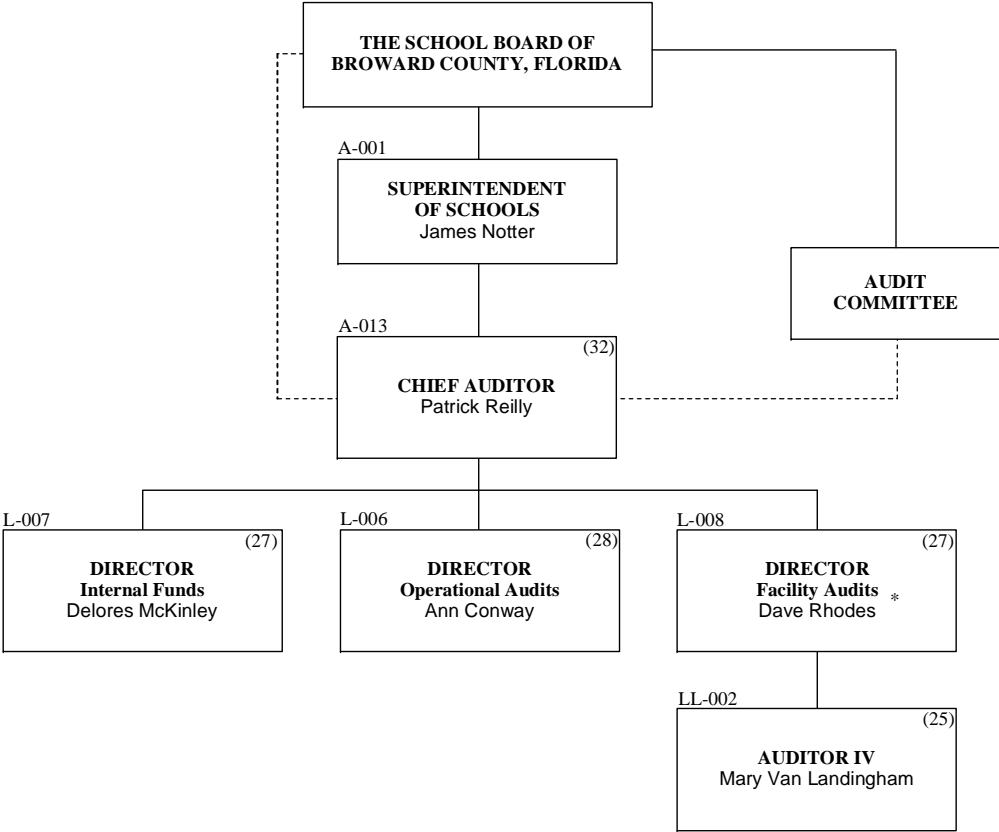


Approved: 06/02/10

**THE SCHOOL BOARD OF BROWARD COUNTY, FLORIDA
2010-2011 ORGANIZATIONAL CHART**

* Capital Outlay Funding

OFFICE OF THE CHIEF AUDITOR

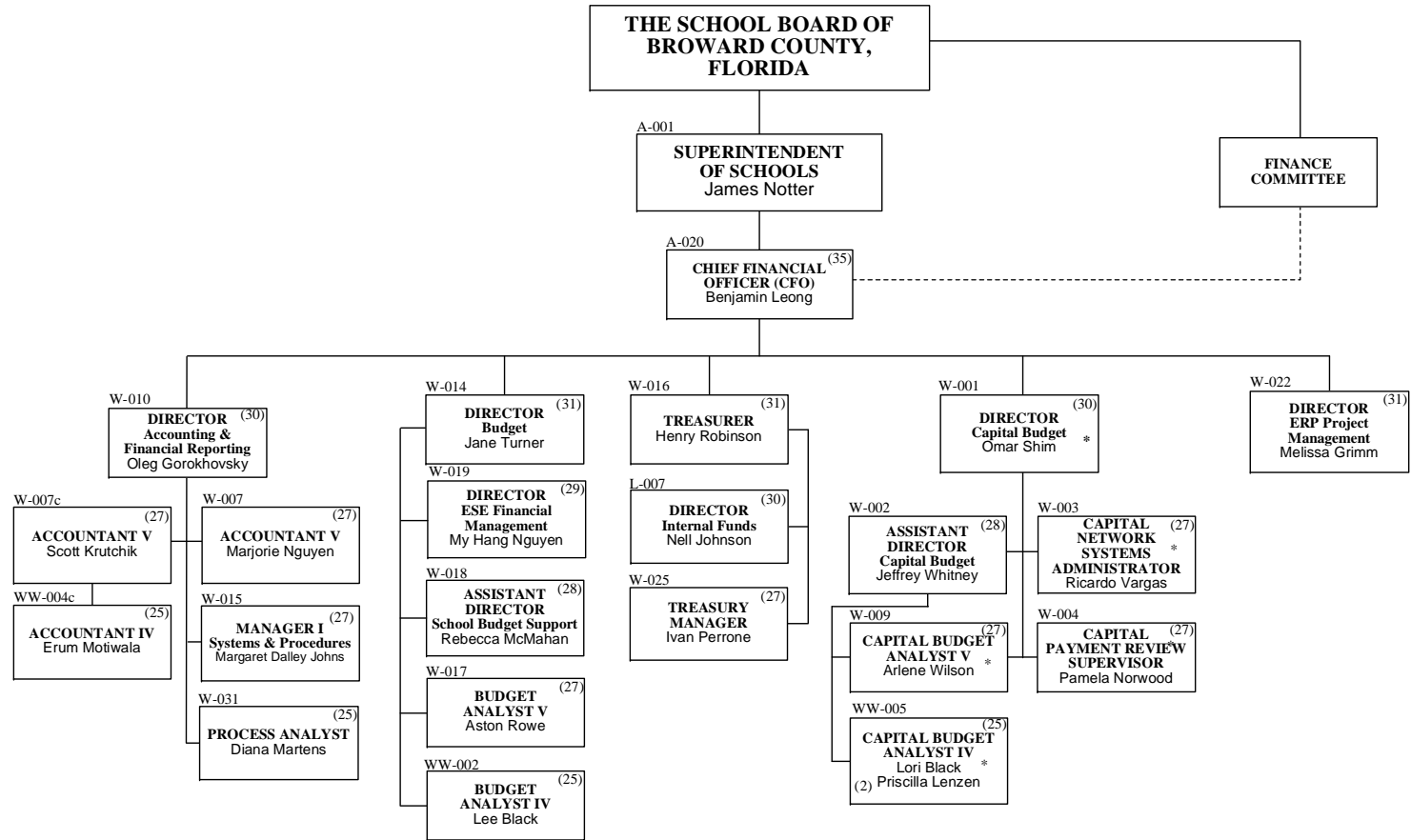


Approved: 06/02/10

**THE SCHOOL BOARD OF BROWARD COUNTY, FLORIDA
2010-2011 ORGANIZATIONAL CHART**

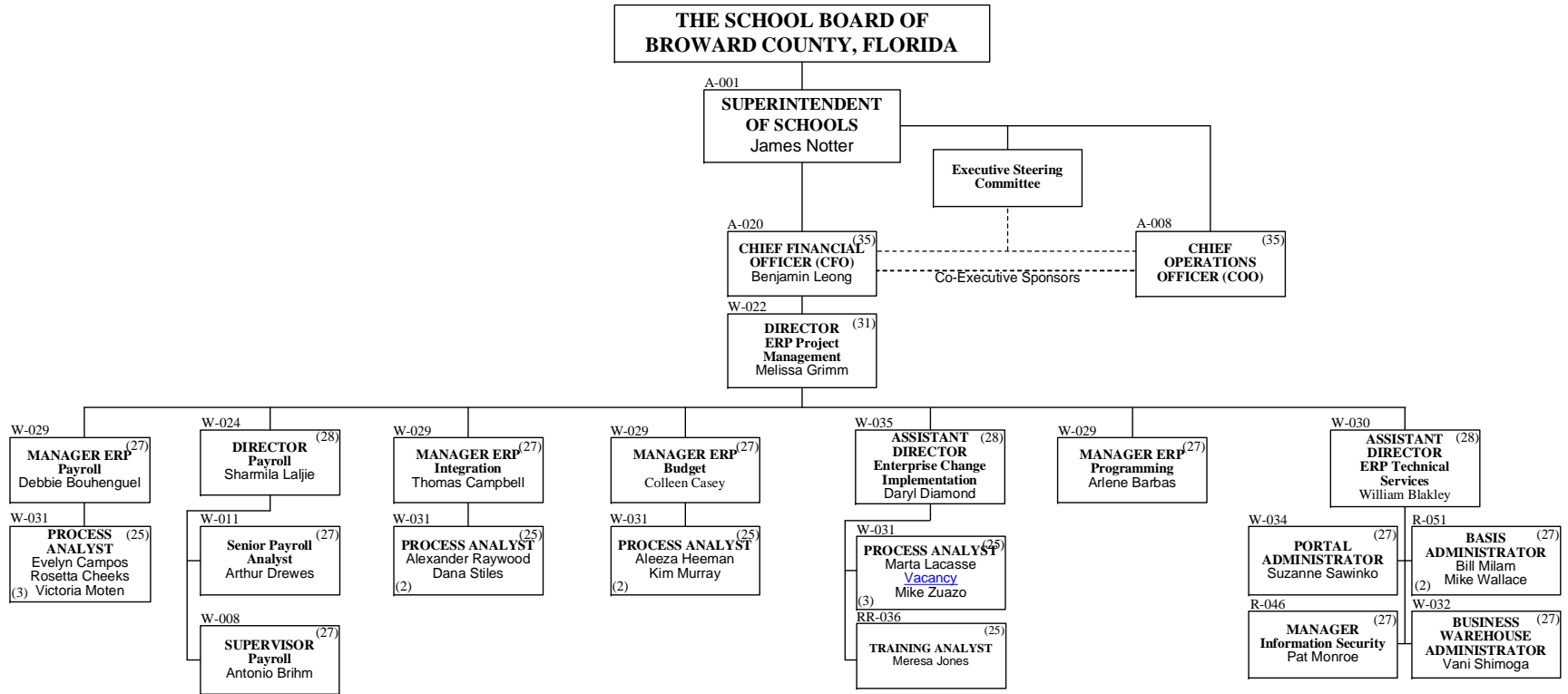
* Capital Outlay Funding

OFFICE OF THE CHIEF FINANCIAL OFFICER



Approved: 06/02/10

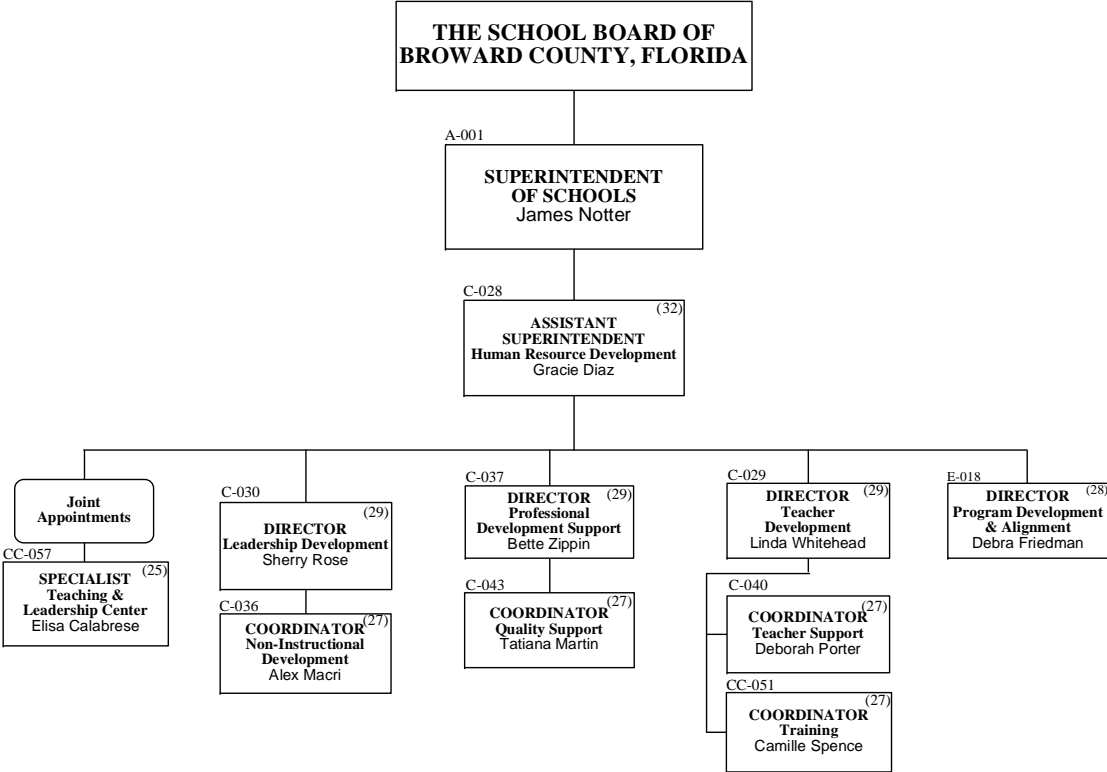
**CHIEF FINANCIAL OFFICER
Enterprise Resource Planning (ERP) Project**



Approved: 06/02/10

**THE SCHOOL BOARD OF BROWARD COUNTY, FLORIDA
2010-2011 ORGANIZATIONAL CHART**

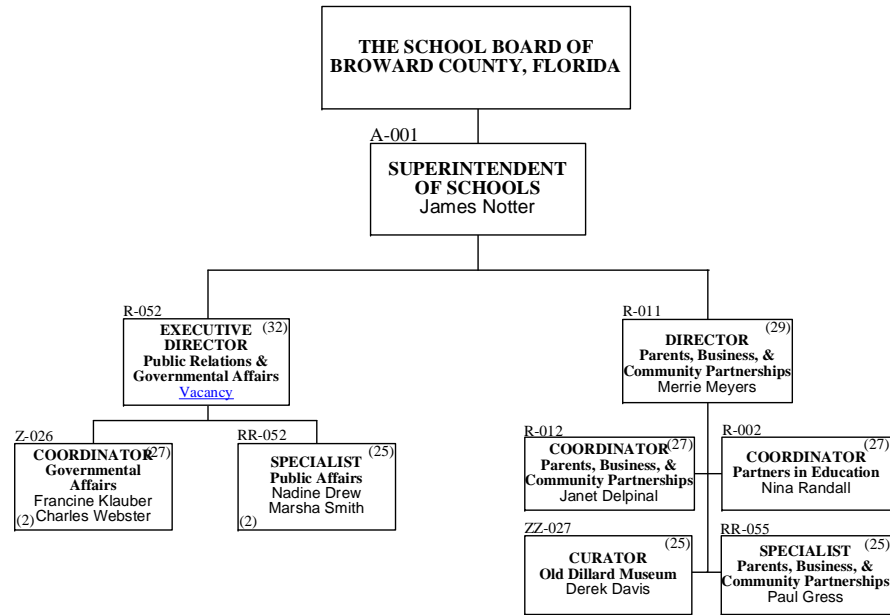
HUMAN RESOURCE DEVELOPMENT (HRD)



Approved: 06/02/10

**THE SCHOOL BOARD OF BROWARD COUNTY, FLORIDA
2010-2011 ORGANIZATIONAL CHART**

PUBLIC RELATIONS, GOVERNMENTAL AFFAIRS, & PARTNERSHIPS



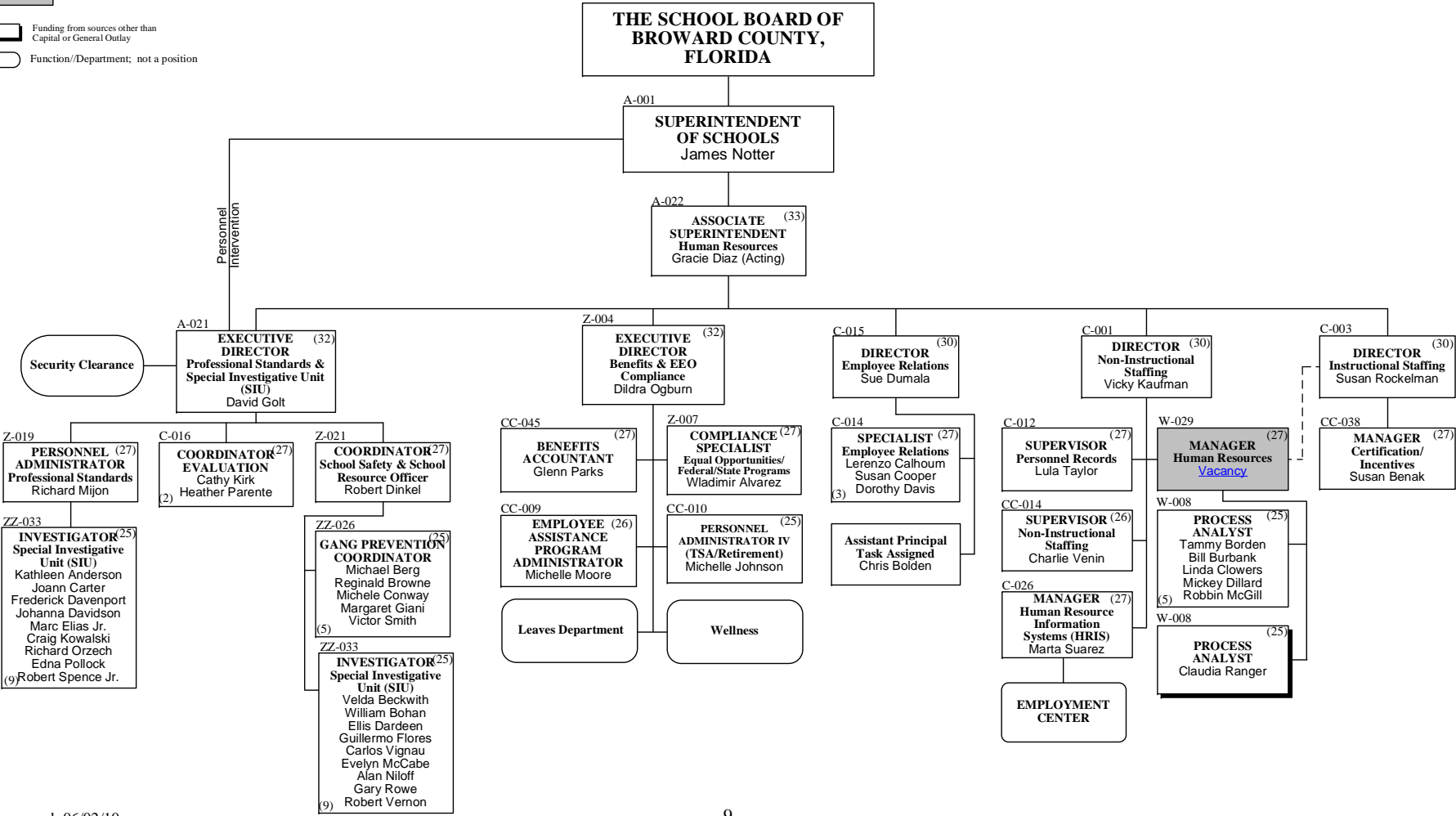
Approved: 06/02/10

**THE SCHOOL BOARD OF BROWARD COUNTY, FLORIDA
2010-2011 ORGANIZATIONAL CHART**

HUMAN RESOURCES

Title Change

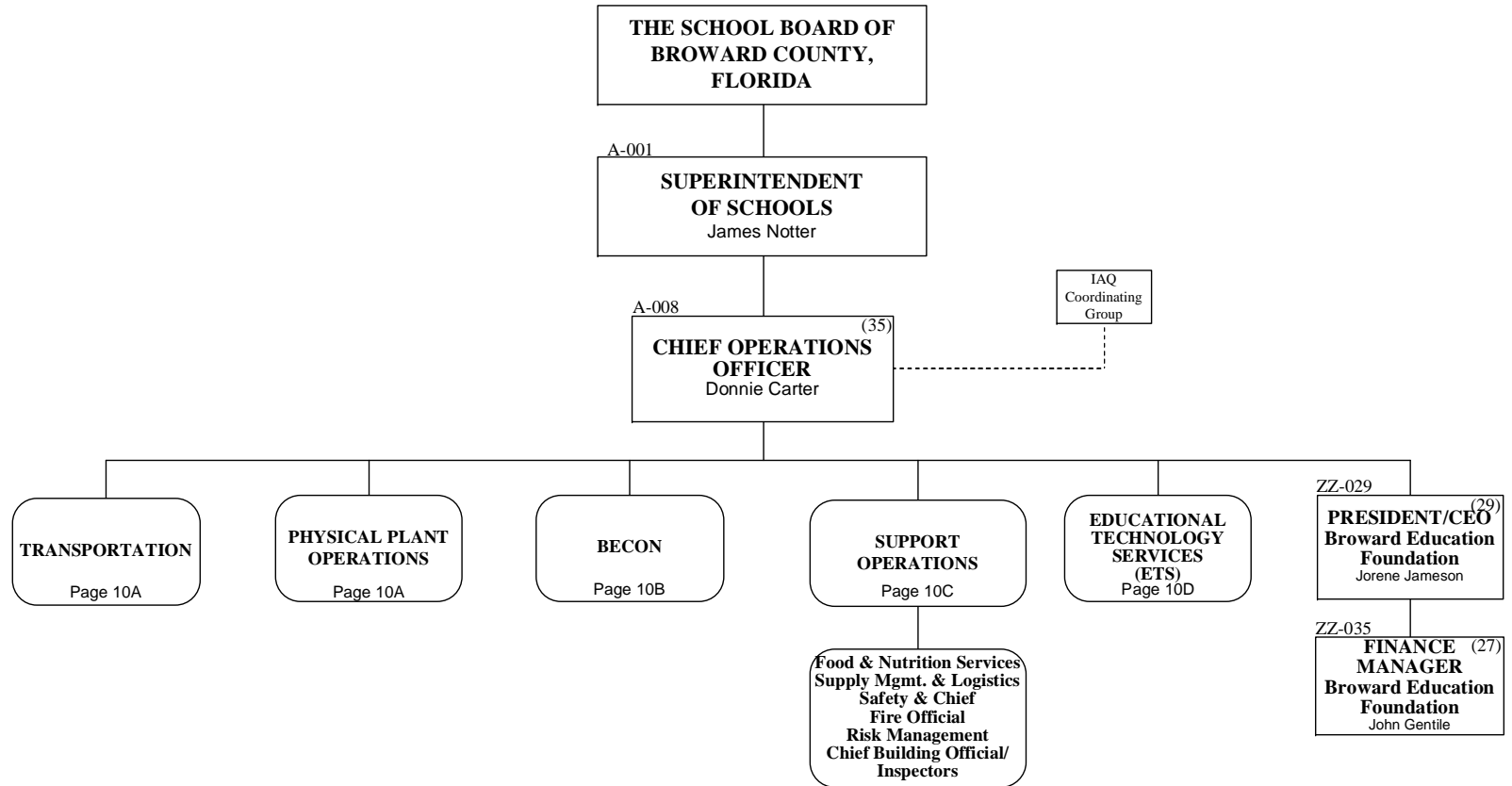
■ Funding from sources other than Capital or General Outlay
○ Function/Department; not a position



Approved: 06/02/10

**THE SCHOOL BOARD OF BROWARD COUNTY, FLORIDA
2010-2011 ORGANIZATIONAL CHART**

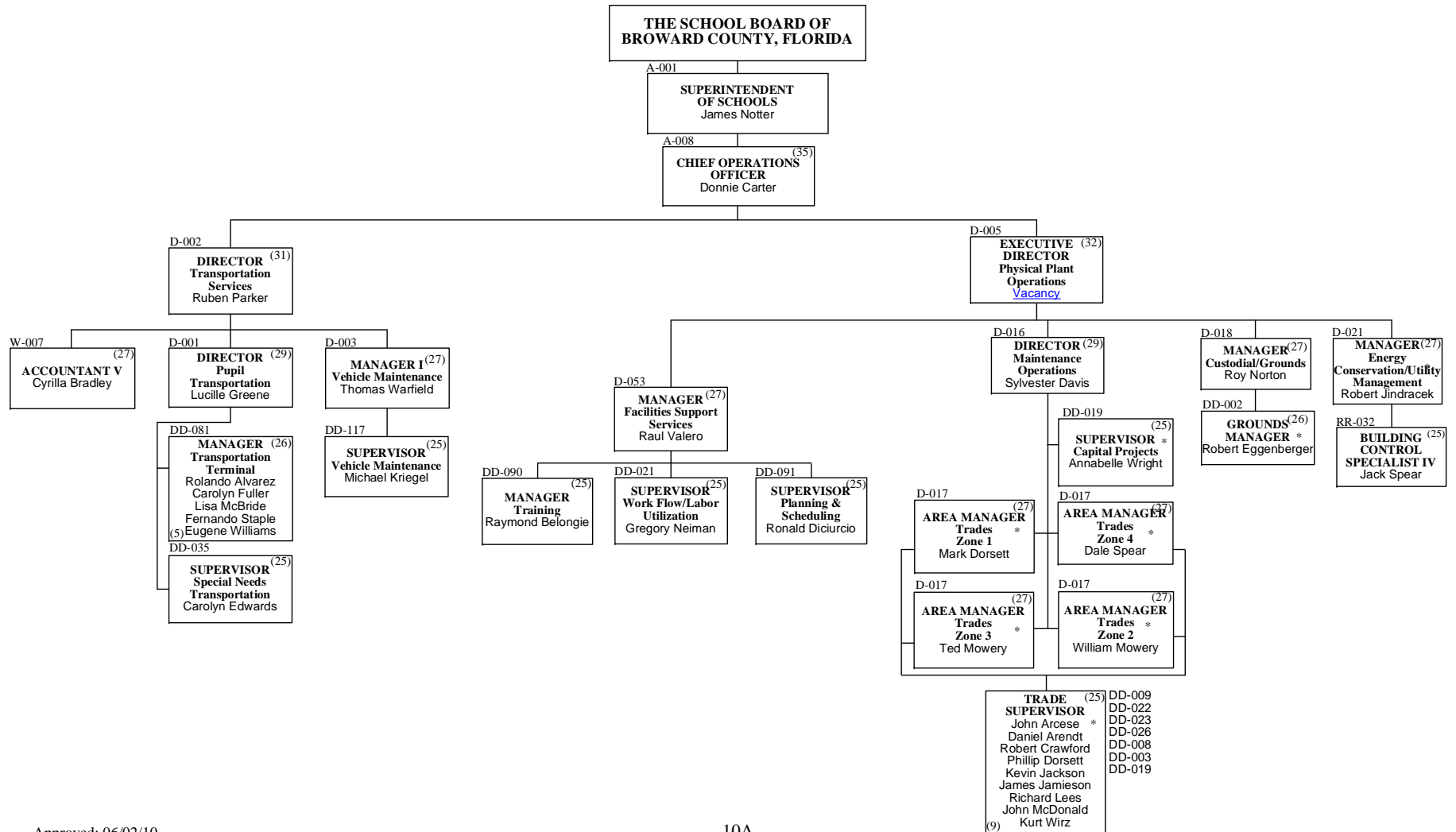
**OFFICE of
CHIEF OPERATIONS OFFICER**



Approved: 06/02/10

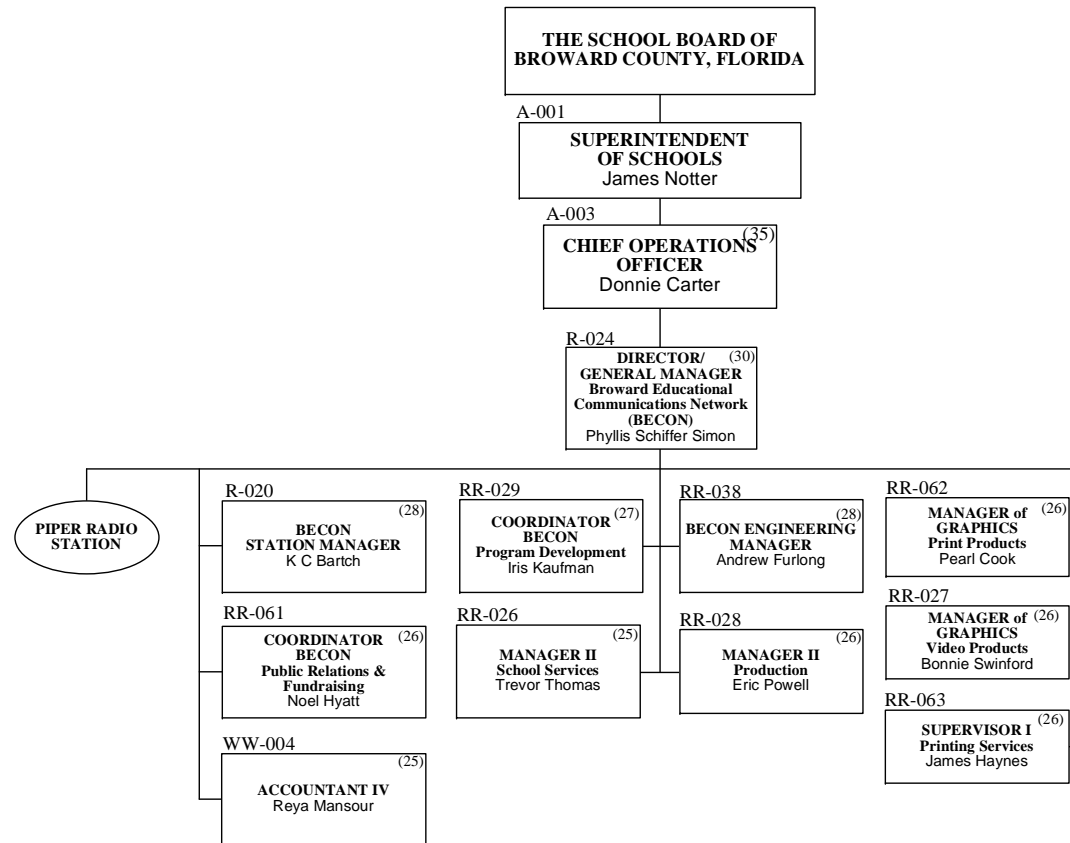
OPERATIONS
Transportation, Food Services, Supply Mgmt & Logistics,
Physical Plant Operations, Safety, Risk Management

THE SCHOOL BOARD OF BROWARD COUNTY, FLORIDA
2010-2011 ORGANIZATIONAL CHART



Approved: 06/02/10

OPERATIONS
Broward Educational Communication Network
(BECON)



Approved: 06/02/10

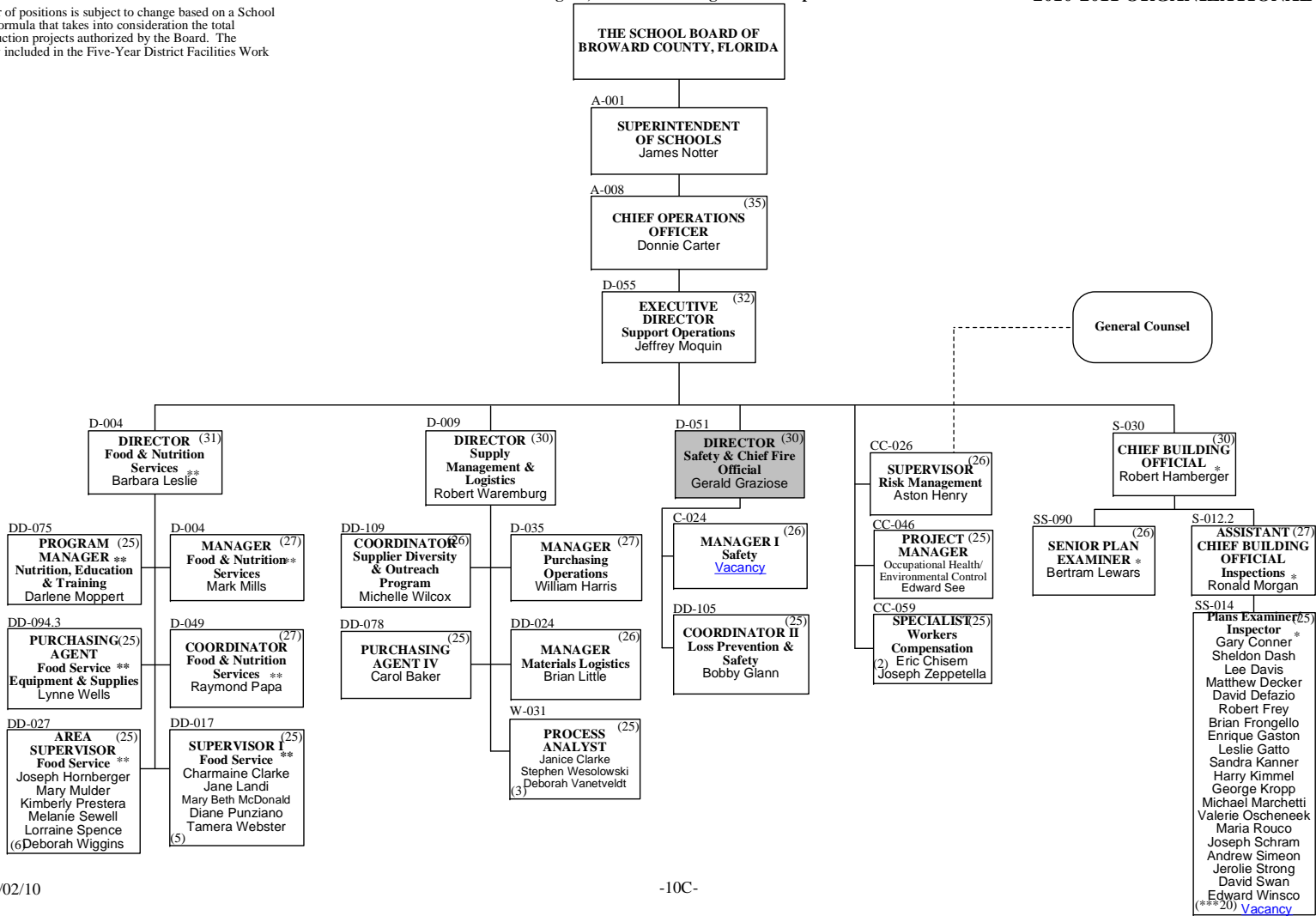
* Capital Funding
 ** Food Service Funding

(***) The number of positions is subject to change based on a School Board approved formula that takes into consideration the total number of construction projects authorized by the Board. The funding is already included in the Five-Year District Facilities Work Program.

Title Change

OPERATIONS
Food & Nutrition Services, Supply Mgmt. & Logistics, Safety, Risk Mgmt., & Chief Building Official/Inspectors

THE SCHOOL BOARD OF BROWARD COUNTY, FLORIDA
2010-2011 ORGANIZATIONAL CHART

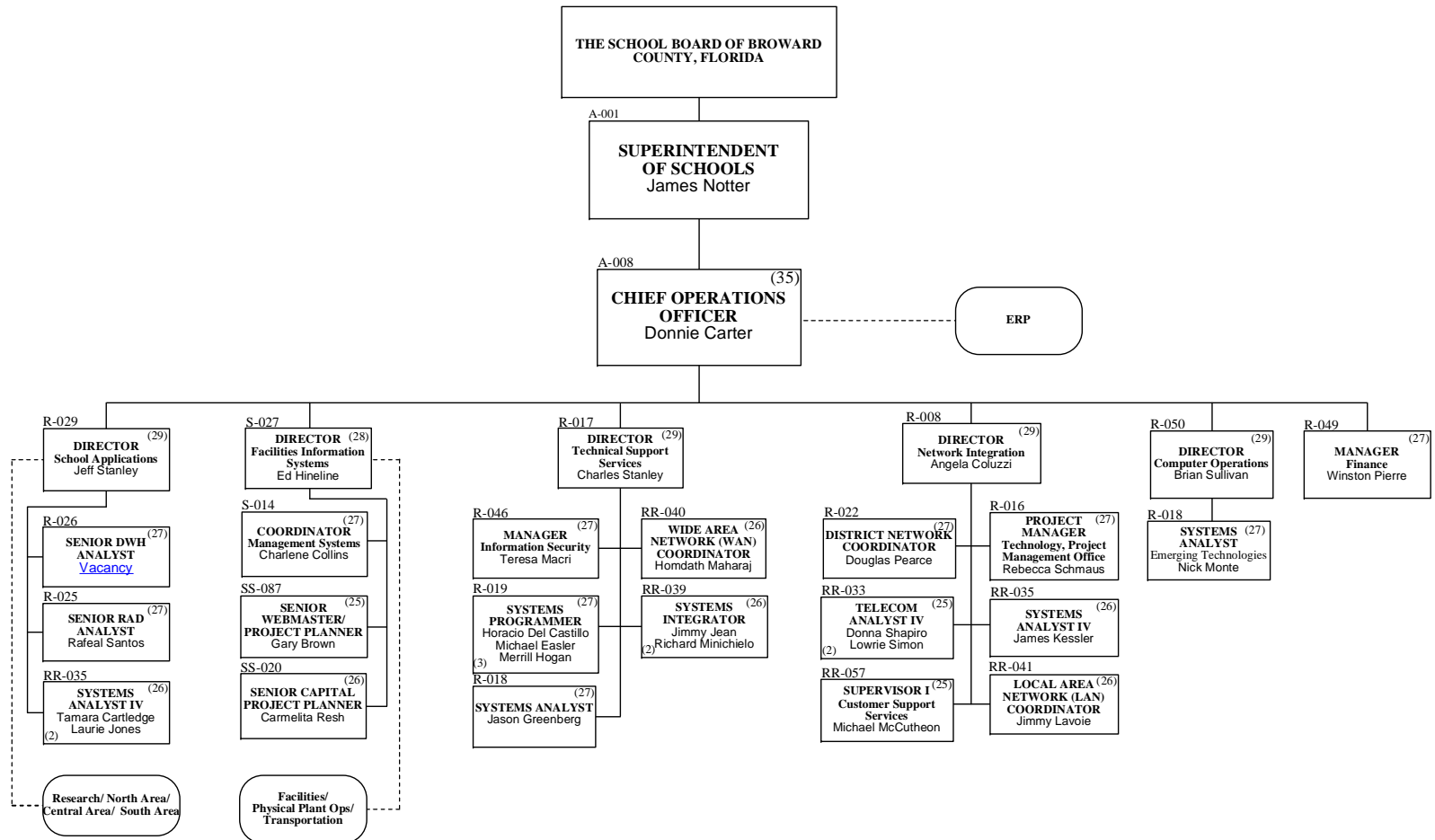


Approved: 06/02/10

Department function

OPERATIONS
Educational Technology Services
(ETS)

THE SCHOOL BOARD OF BROWARD COUNTY, FLORIDA
2010-2011 ORGANIZATIONAL CHART



Approved: 06/02/10

- 10D -

