

FLUTE/PICCOLO

Broward Honors Band 2005 Middle School

Directions: The following seven major scales must be played in order and from memory in two minutes or less. Name _____ Period _____

G Concert

C Concert

F Concert

Bb Concert

Eb Concert

Ab Concert

Db Concert

The chromatic scale must be performed in even eighth notes, tongued up and slurred down at $\text{♩} = 144$.

Chromatic Scale

NOTE: The piccolo audition will consist of only the chromatic and the prepared piece. No major scales.

OBOE

Broward Honors Band 2005 Middle School

Directions: The following seven major scales must be played in order and from memory in two minutes or less. Name _____ Period _____

G Concert



C Concert



F Concert



Bb Concert



Eb Concert



Ab Concert



Db Concert



The chromatic scale must be performed in even eighth notes, tongued up and slurred down at $\text{♩} = 144$.

Chromatic Scale



BASSOON

Broward County Honors Band 2005 Middle School

DIRECTIONS: The following seven major scales must be in order and from memory in two minutes or less.

Name _____ Period _____

G Concert



C Concert



F Concert



Bb Concert



Eb Concert



Ab Concert



Db Concert



The chromatic scale must be performed in even eighth notes, tongued up and slurred down at $\text{♩} = 144$.

Chromatic Scale



CLARINET

Broward Honors Band 2005 Middle School

Directions: The following seven major scales must be played in order and from memory in two minutes or less. Name _____ Period _____

G Concert (A Scale)

Musical notation for G Concert (A Scale) in treble clef, 2/4 time. The scale starts on G4 and ends on G4. It consists of 14 eighth notes: G4, A4, B4, C5, D5, E5, F5, G5, F5, E5, D5, C5, B4, A4, G4. The notes are slurred together.

C Concert (D Scale)

Musical notation for C Concert (D Scale) in treble clef, 2/4 time. The scale starts on D4 and ends on D4. It consists of 14 eighth notes: D4, E4, F4, G4, A4, B4, C5, D5, C5, B4, A4, G4, F4, E4, D4. The notes are slurred together.

F Concert (G Scale)

Musical notation for F Concert (G Scale) in treble clef, 2/4 time. The scale starts on G4 and ends on G4. It consists of 14 eighth notes: G4, A4, B4, C5, D5, E5, F5, G5, F5, E5, D5, C5, B4, A4, G4. The notes are slurred together.

Bb Concert (C Scale)

Musical notation for Bb Concert (C Scale) in treble clef, 2/4 time. The scale starts on C4 and ends on C4. It consists of 14 eighth notes: C4, D4, E4, F4, G4, A4, B4, C5, B4, A4, G4, F4, E4, D4, C4. The notes are slurred together.

Eb Concert (F Scale)

Musical notation for Eb Concert (F Scale) in treble clef, 2/4 time. The scale starts on F4 and ends on F4. It consists of 14 eighth notes: F4, G4, A4, B4, C5, D5, E5, F5, E5, D5, C5, B4, A4, G4, F4. The notes are slurred together.

Ab Concert (Bb Scale)

Musical notation for Ab Concert (Bb Scale) in treble clef, 2/4 time. The scale starts on Bb4 and ends on Bb4. It consists of 14 eighth notes: Bb4, C5, D5, Eb5, F5, G5, Ab5, Bb5, Ab5, G5, F5, Eb5, D5, C5, Bb4. The notes are slurred together.

Db Concert (Eb Scale)

Musical notation for Db Concert (Eb Scale) in treble clef, 2/4 time. The scale starts on Eb4 and ends on Eb4. It consists of 14 eighth notes: Eb4, F4, G4, Ab4, Bb4, C5, Db5, Eb5, Eb5, C5, Bb4, Ab4, G4, F4, Eb4. The notes are slurred together.

The chromatic scale must be performed in even eighth notes, tongued up and slurred down at $\text{♩} = 144$.

Chromatic Scale

Musical notation for Chromatic Scale in treble clef, 2/4 time. The scale starts on C4 and ends on C4. It consists of 24 eighth notes: C4, C#4, D4, D#4, E4, E#4, F4, F#4, G4, G#4, A4, A#4, B4, B#4, C5, C#5, D5, D#5, E5, E#5, F5, F#5, G5, G#5, A5, A#5, B5, B#5, C6. The notes are slurred together.

ALTO/CONTRA-ALTO
CLARINET

Broward County Honors Band 2005 Middle School

DIRECTIONS: The following seven major scales must be played in order and from memory in two minutes or less.

Name _____ Period _____

G Concert (E Scale)

Musical notation for G Concert (E Scale) in treble clef, 2/4 time. The scale is written in E major (three sharps). It consists of two lines of music. The first line contains the first six notes of the scale: E4, F#4, G4, A4, B4, C5. The second line contains the last six notes: D5, E5, D5, C5, B4, A4, ending with a double bar line and repeat dots.

C Concert (A Scale)

Musical notation for C Concert (A Scale) in treble clef, 2/4 time. The scale is written in A major (three sharps). It consists of two lines of music. The first line contains the first six notes: A4, B4, C5, D5, E5, F#5. The second line contains the last six notes: G5, A5, G5, F#5, E5, D5, ending with a double bar line and repeat dots.

F Concert (D Scale)

Musical notation for F Concert (D Scale) in treble clef, 2/4 time. The scale is written in D major (two sharps). It consists of two lines of music. The first line contains the first six notes: D4, E4, F4, G4, A4, B4. The second line contains the last six notes: C5, D5, C5, B4, A4, G4, ending with a double bar line and repeat dots.

Bb Concert (G Scale)

Musical notation for Bb Concert (G Scale) in treble clef, 2/4 time. The scale is written in G major (one sharp). It consists of two lines of music. The first line contains the first six notes: G4, A4, B4, C5, D5, E5. The second line contains the last six notes: F5, G5, F5, E5, D5, C5, ending with a double bar line and repeat dots.

Eb Concert (C Scale)

Musical notation for Eb Concert (C Scale) in treble clef, 2/4 time. The scale is written in C major (no sharps or flats). It consists of two lines of music. The first line contains the first six notes: C4, D4, E4, F4, G4, A4. The second line contains the last six notes: B4, C5, B4, A4, G4, F4, ending with a double bar line and repeat dots.

Ab Concert (F Scale)

Musical notation for Ab Concert (F Scale) in treble clef, 2/4 time. The scale is written in F major (one flat). It consists of two lines of music. The first line contains the first six notes: F4, G4, A4, Bb4, C5, D5. The second line contains the last six notes: E5, F5, E5, D5, C5, Bb4, ending with a double bar line and repeat dots.

Db Concert (Bb Scale)

Musical notation for Db Concert (Bb Scale) in treble clef, 2/4 time. The scale is written in Bb major (two flats). It consists of two lines of music. The first line contains the first six notes: Bb4, C5, D5, Eb5, F5, G5. The second line contains the last six notes: Ab5, Bb5, Ab5, G5, F5, Eb5, ending with a double bar line and repeat dots.

The chromatic scale must be performed in even eighth notes, tongued up and slurred down at $\text{♩} = 144$.

Chromatic Scale

Musical notation for the Chromatic Scale in treble clef, 2/4 time. It consists of two lines of music. The first line shows the ascending chromatic scale from C4 to C5. The second line shows the descending chromatic scale from C5 to C4. The notes are written as eighth notes with a slur over the entire scale.

ALTO / BARITONE SAX

Broward County Honors Band 2005 Middle School

Directions: The following seven major scales must be played in order and from memory in two minutes or less.

Name _____ Period _____

G Concert (E Scale)



C Concert (A Scale)



F Concert (D Scale)



Bb Concert (G Scale)



Eb Concert (D Scale)



Ab Concert (F Scale)



Db Concert (Bb Scale)



The chromatic scale must be performed in even eighth notes, tongued up and slurred down at $\text{♩} = 144$.

Chromatic Scale



TENOR SAX

Broward County Honors Band 2005

Directions: The following seven major scales must be played in order and from memory in two minutes or less.

Name _____ Period _____

G Concert (A Scale)

Musical notation for G Concert (A Scale) in treble clef, 2/4 time. The scale starts on G4 and ends on G4. It consists of two phrases: an ascending eighth-note scale and a descending eighth-note scale, both slurred together.

C Concert (D Scale)

Musical notation for C Concert (D Scale) in treble clef, 2/4 time. The scale starts on D4 and ends on D4. It consists of two phrases: an ascending eighth-note scale and a descending eighth-note scale, both slurred together.

F Concert (G Scale)

Musical notation for F Concert (G Scale) in treble clef, 2/4 time. The scale starts on G4 and ends on G4. It consists of two phrases: an ascending eighth-note scale and a descending eighth-note scale, both slurred together.

Eb Concert (F Scale)

Musical notation for Eb Concert (F Scale) in treble clef, 2/4 time. The scale starts on F4 and ends on F4. It consists of two phrases: an ascending eighth-note scale and a descending eighth-note scale, both slurred together.

Ab Concert (Bb Scale)

Musical notation for Ab Concert (Bb Scale) in treble clef, 2/4 time. The scale starts on Bb4 and ends on Bb4. It consists of two phrases: an ascending eighth-note scale and a descending eighth-note scale, both slurred together.

Db Concert (Eb Scale)

Musical notation for Db Concert (Eb Scale) in treble clef, 2/4 time. The scale starts on Eb4 and ends on Eb4. It consists of two phrases: an ascending eighth-note scale and a descending eighth-note scale, both slurred together.

The chromatic scale must be performed in even eighth notes, tongued up and slurred down at $\text{♩} = 144$.

Chromatic Scale

Musical notation for Chromatic Scale in treble clef, 2/4 time. The scale starts on C4 and ends on C4. It consists of two phrases: an ascending eighth-note chromatic scale and a descending eighth-note chromatic scale, both slurred together.

Broward County Honors Band 2005

TRUMPET

Directions: The following seven major scales must be played in order and from memory in two minutes or less. Name _____ Period _____

G Concert (A Scale)



C Concert (D Scale)



F Concert (G Scale)



Bb Concert (C Scale)



Eb Concert (F Scale)



Ab Concert (Bb Scale)

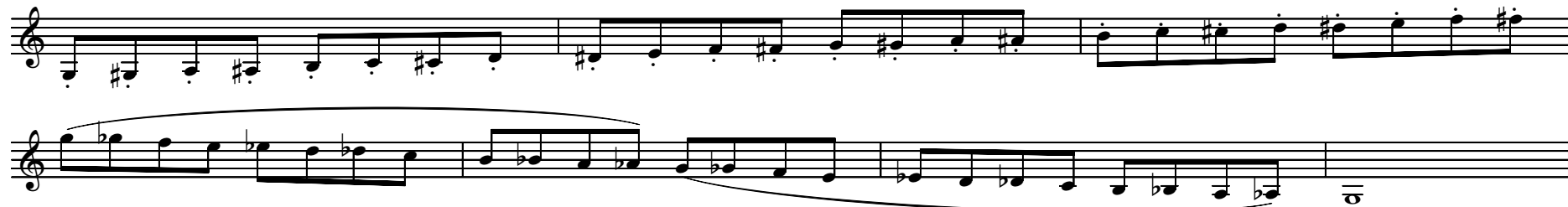


Db Concert (Eb Scale)



The chromatic scale must be performed in even eighth notes, tongued up and slurred down at $\text{♩} = 144$.

Chromatic Scale



F HORN

Broward County Honors Band 2005

Directions: The following seven major scales must be played in order and from memory in two minutes or less. Name _____ Period _____

G Concert (D Scale)

Musical notation for G Concert (D Scale) in treble clef, 2/4 time. The scale starts on D4 and ends on D5. It consists of two measures: the first measure contains the notes D4, E4, F#4, G4, A4, B4, C5, and the second measure contains D5, C5, B4, A4, G4, F#4, E4, and D4. The notes are beamed in eighth notes.

C Concert (G Scale)

Musical notation for C Concert (G Scale) in treble clef, 2/4 time. The scale starts on G4 and ends on G5. It consists of two measures: the first measure contains the notes G4, A4, B4, C5, B4, A4, G4, and the second measure contains F#4, E4, D4, C4, B3, A3, G3, and F3. The notes are beamed in eighth notes.

F Concert (C Scale)

Musical notation for F Concert (C Scale) in treble clef, 2/4 time. The scale starts on C4 and ends on C5. It consists of two measures: the first measure contains the notes C4, D4, E4, F4, G4, A4, B4, and the second measure contains C5, B4, A4, G4, F4, E4, D4, and C4. The notes are beamed in eighth notes.

Bb Concert

Musical notation for Bb Concert in treble clef, 2/4 time. The scale starts on Bb3 and ends on Bb4. It consists of two measures: the first measure contains the notes Bb3, Ab3, Gb3, Fb3, Eb3, Db3, Cb3, and the second measure contains Bb4, Ab4, Gb4, Fb4, Eb4, Db4, Cb4, and Bb3. The notes are beamed in eighth notes.

Eb Concert (F Scale)

Musical notation for Eb Concert (F Scale) in treble clef, 2/4 time. The scale starts on F3 and ends on F4. It consists of two measures: the first measure contains the notes F3, G3, A3, Bb3, Ab3, Gb3, Fb3, and the second measure contains E3, D3, C3, B2, Ab2, Gb2, Fb2, and E2. The notes are beamed in eighth notes.

Ab Concert (Eb Scale)

Musical notation for Ab Concert (Eb Scale) in treble clef, 2/4 time. The scale starts on Ab3 and ends on Ab4. It consists of two measures: the first measure contains the notes Ab3, Gb3, Fb3, Eb3, Db3, Cb3, Bb3, and the second measure contains Ab4, Gb4, Fb4, Eb4, Db4, Cb4, Bb3, and Ab3. The notes are beamed in eighth notes.

Db Concert (Ab Scale)

Musical notation for Db Concert (Ab Scale) in treble clef, 2/4 time. The scale starts on Ab3 and ends on Ab4. It consists of two measures: the first measure contains the notes Ab3, Gb3, Fb3, Eb3, Db3, Cb3, Bb3, and the second measure contains Ab4, Gb4, Fb4, Eb4, Db4, Cb4, Bb3, and Ab3. The notes are beamed in eighth notes.

The chromatic scale must be performed in even eighth notes, tongued up and slurred down at $\text{♩} = 144$.

Chromatic Scale

Musical notation for Chromatic Scale in treble clef, 2/4 time. The scale starts on C4 and ends on C5. It consists of two measures: the first measure contains the notes C4, C#4, D4, D#4, E4, E#4, F4, F#4, G4, G#4, A4, A#4, B4, B#4, and the second measure contains C5, B4, Bb4, Ab4, Gb4, Fb4, Eb4, Db4, Cb4, Bb3, Ab3, Gb3, Fb3, Eb3, Db3, Cb3, and Bb2. The notes are beamed in eighth notes.

TROMBONE
BARITONE BC

Broward County Honors Band 2005 Middle School

Directions: The following seven major scales must be played in order and from memory in two minutes or less.

Name _____ Period _____

G Concert

Musical notation for the G major scale in concert pitch (one sharp). The scale is written in bass clef with a common time signature. It consists of eight measures: four ascending eighth notes and four descending eighth notes, with slurs and accents over the notes.

C Concert

Musical notation for the C major scale in concert pitch (no sharps or flats). The scale is written in bass clef with a common time signature. It consists of eight measures: four ascending eighth notes and four descending eighth notes, with slurs and accents over the notes.

F Concert

Musical notation for the F major scale in concert pitch (one flat). The scale is written in bass clef with a common time signature. It consists of eight measures: four ascending eighth notes and four descending eighth notes, with slurs and accents over the notes.

Bb Concert

Musical notation for the Bb major scale in concert pitch (two flats). The scale is written in bass clef with a common time signature. It consists of eight measures: four ascending eighth notes and four descending eighth notes, with slurs and accents over the notes.

Eb Concert

Musical notation for the Eb major scale in concert pitch (three flats). The scale is written in bass clef with a common time signature. It consists of eight measures: four ascending eighth notes and four descending eighth notes, with slurs and accents over the notes.

Ab Concert

Musical notation for the Ab major scale in concert pitch (four flats). The scale is written in bass clef with a common time signature. It consists of eight measures: four ascending eighth notes and four descending eighth notes, with slurs and accents over the notes.

Db Concert

Musical notation for the Db major scale in concert pitch (five flats). The scale is written in bass clef with a common time signature. It consists of eight measures: four ascending eighth notes and four descending eighth notes, with slurs and accents over the notes.

The chromatic scale must be performed in even eighth notes, tongued up and slurred down at $\text{♩} = 144$.

Chromatic Scale

Musical notation for a chromatic scale in bass clef. The scale is written in bass clef with a common time signature. It consists of two lines of music. The first line shows the ascending chromatic scale from C2 to C4. The second line shows the descending chromatic scale from C4 to C2. The notes are slurred together.

TUBA

Broward County Honors Band 2005

Directions: The following seven major scales must be played in order and from memory in two minutes or less. Name _____ Period _____

G Concert

Musical notation for the G major scale in bass clef, 4/4 time. The scale is written across two staves. The first staff contains the first two measures, and the second staff contains the remaining measures. The scale is: G2, A2, B2, C3, D3, E3, F#3, G3, A3, B3, C4, D4, E4, F#4, G4. The piece concludes with a double bar line and a repeat sign.

C Concert

Musical notation for the C major scale in bass clef, 4/4 time. The scale is written across two staves. The first staff contains the first two measures, and the second staff contains the remaining measures. The scale is: C2, D2, E2, F2, G2, A2, B2, C3, D3, E3, F3, G3, A3, B3, C4. The piece concludes with a double bar line and a repeat sign.

F Concert

Musical notation for the F major scale in bass clef, 4/4 time. The scale is written across two staves. The first staff contains the first two measures, and the second staff contains the remaining measures. The scale is: F2, G2, A2, Bb2, C3, D3, E3, F3, G3, A3, Bb3, C4, D4, E4, F4. The piece concludes with a double bar line and a repeat sign.

Bb Concert

Musical notation for the Bb major scale in bass clef, 4/4 time. The scale is written across two staves. The first staff contains the first two measures, and the second staff contains the remaining measures. The scale is: Bb2, C3, D3, Eb3, F3, G3, Ab3, Bb3, C4, D4, Eb4, F4, G4, Ab4, Bb4. The piece concludes with a double bar line and a repeat sign.

Eb Concert

Musical notation for the Eb major scale in bass clef, 4/4 time. The scale is written across two staves. The first staff contains the first two measures, and the second staff contains the remaining measures. The scale is: Eb2, F2, G2, Ab2, Bb2, C3, Db3, Eb3, F3, G3, Ab3, Bb3, C4, Db4, Eb4. The piece concludes with a double bar line and a repeat sign.

Ab Concert

Musical notation for the Ab major scale in bass clef, 4/4 time. The scale is written across two staves. The first staff contains the first two measures, and the second staff contains the remaining measures. The scale is: Ab2, Bb2, C3, Db3, Eb3, F3, Gb3, Ab3, Bb3, C4, Db4, Eb4, F4, Gb4, Ab4. The piece concludes with a double bar line and a repeat sign.

Db Concert

Musical notation for the Db major scale in bass clef, 4/4 time. The scale is written across two staves. The first staff contains the first two measures, and the second staff contains the remaining measures. The scale is: Db2, Eb2, F2, Gb2, Ab2, Bb2, C3, Db3, Eb3, F3, Gb3, Ab3, Bb3, C4, Db4, Eb4. The piece concludes with a double bar line and a repeat sign.

The chromatic scale must be performed in even eighth notes, tongued up and slurred down at $\text{♩} = 144$.

Chromatic Scale

Musical notation for the chromatic scale in bass clef, 4/4 time. The scale is written across two staves. The first staff contains the first two measures, and the second staff contains the remaining measures. The scale is: C2, C#2, D2, D#2, E2, E#2, F2, F#2, G2, G#2, A2, A#2, B2, B#2, C3, C#3, D3, D#3, E3, E#3, F3, F#3, G3, G#3, A3, A#3, B3, B#3, C4, C#4, D4, D#4, E4, E#4, F4, F#4, G4, G#4, A4, A#4, B4, B#4, C5. The piece concludes with a double bar line and a repeat sign.

MALLETS

Broward Honors Band 2005 Middle School

Directions: The following seven major scales must be played in order and from memory in two minutes or less.

Name _____ Period _____

NOTE: Starting note and number of octaves may vary with the instrument used for audition..

G Concert

Musical notation for the G major scale in treble clef, one sharp (F#), and common time. The scale is written in eighth notes with slurs and ties, starting on G4 and ending on G5.

C Concert

Musical notation for the C major scale in treble clef, no sharps or flats, and common time. The scale is written in eighth notes with slurs and ties, starting on C4 and ending on C5.

F Concert

Musical notation for the F major scale in treble clef, one flat (Bb), and common time. The scale is written in eighth notes with slurs and ties, starting on F4 and ending on F5.

Bb Concert

Musical notation for the Bb major scale in treble clef, two flats (Bb, Eb), and common time. The scale is written in eighth notes with slurs and ties, starting on Bb4 and ending on Bb5.

Eb Concert

Musical notation for the Eb major scale in treble clef, three flats (Bb, Eb, Ab), and common time. The scale is written in eighth notes with slurs and ties, starting on Eb4 and ending on Eb5.

Ab Concert

Musical notation for the Ab major scale in treble clef, four flats (Bb, Eb, Ab, Db), and common time. The scale is written in eighth notes with slurs and ties, starting on Ab4 and ending on Ab5.

Db Concert

Musical notation for the Db major scale in treble clef, five flats (Bb, Eb, Ab, Db, Gb), and common time. The scale is written in eighth notes with slurs and ties, starting on Db4 and ending on Db5.

The chromatic scale must be performed in even eighth notes, tongued up and slurred down at $\text{♩} = 144$.

Chromatic Scale

Musical notation for the chromatic scale in treble clef, common time. It consists of two lines of eighth notes: the first line is an ascending chromatic scale from Bb4 to Bb5, and the second line is a descending chromatic scale from Bb5 to Bb4. Slurs and ties are used to indicate the phrasing.